



**AGNICO EAGLE**

## **Meliadine Project**

### **Saline Effluent Discharge to Marine Environment**

## **TERRESTRIAL WILDLIFE**





# PRESENTATION OVERVIEW



- Caribou Management
- Monitoring and Mitigation Plans
- Questions





# CARIBOU MANAGEMENT

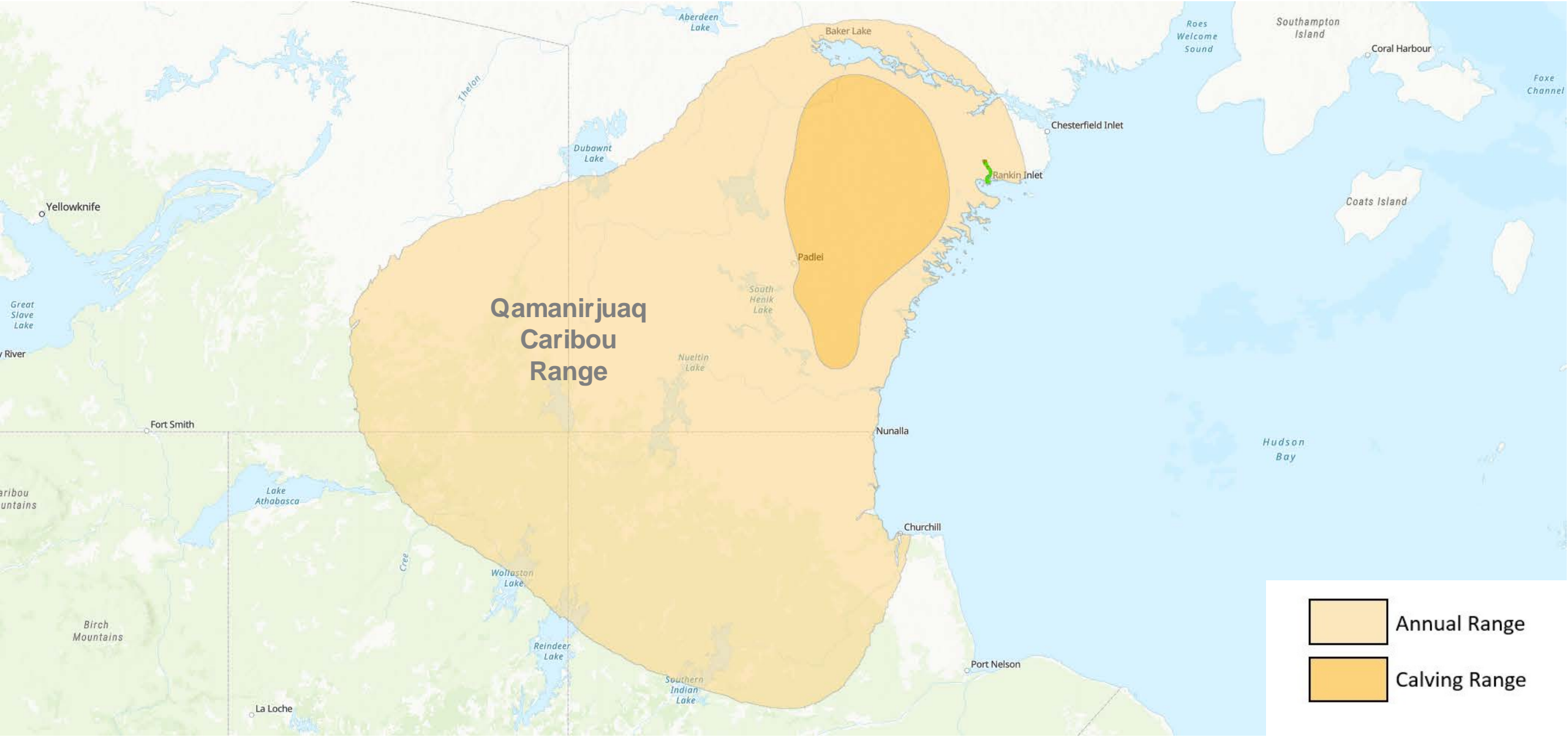




# QAMANIRJUAQ CARIBOU RANGE



**AGNICO EAGLE**



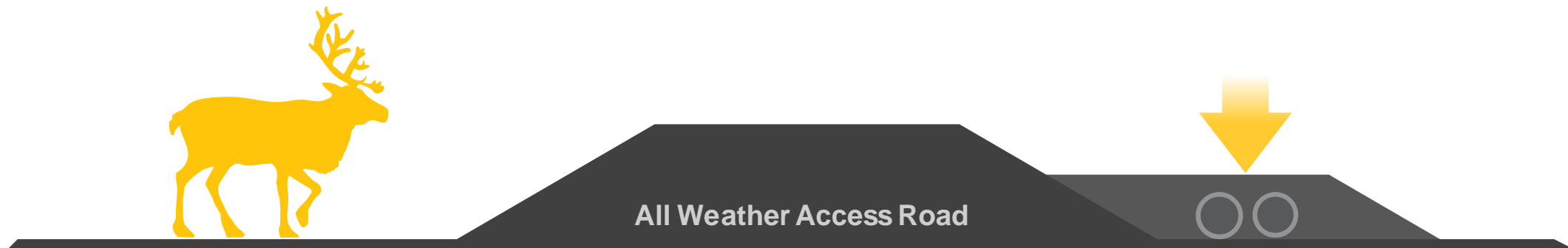
# CARIBOU MITIGATION

## COVERING



- Agnico Eagle will cover 80-90% of the waterlines and monitoring of caribou interactions with the AWAR and waterlines will be completed following the TEMMP

**Cover the waterlines into the roadside to help caribou cross.**

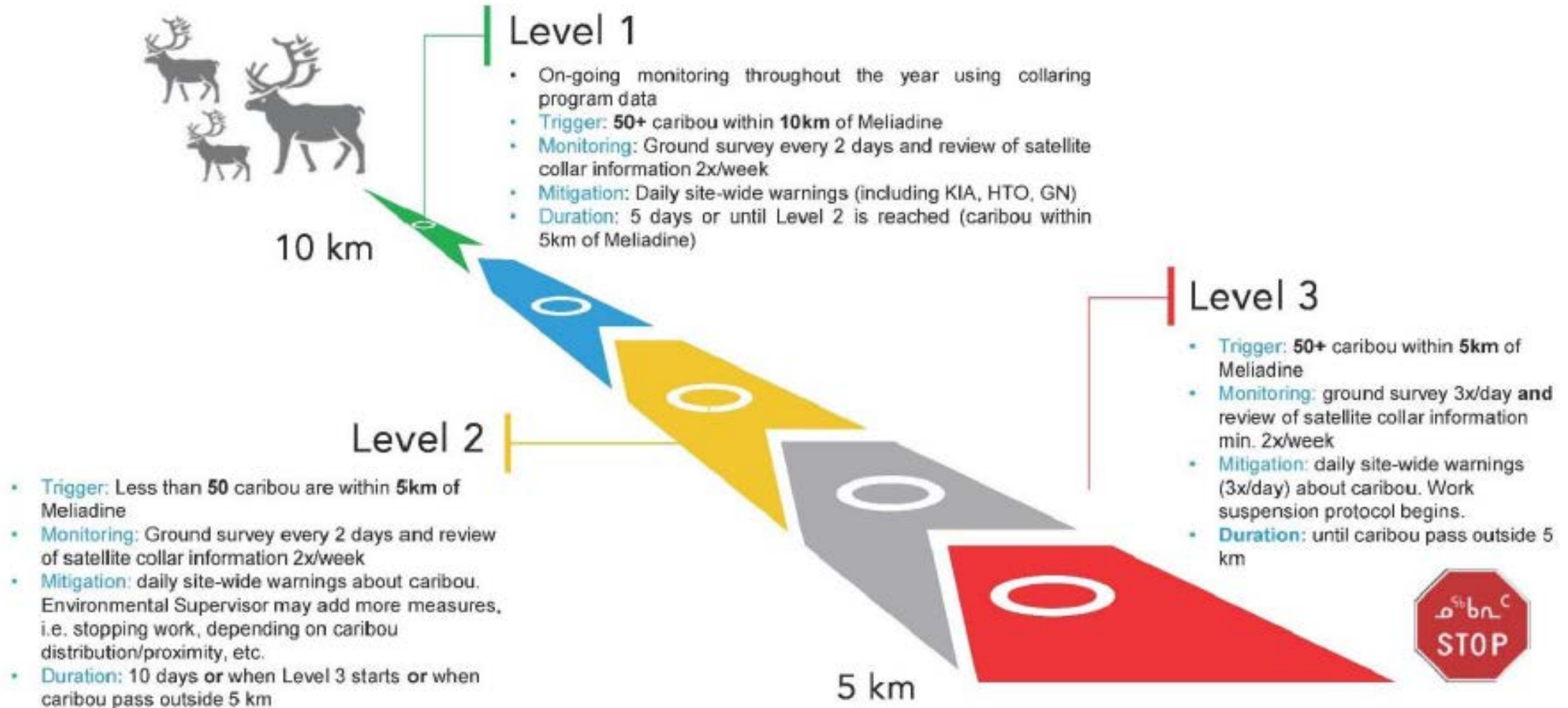


# TEMMP MONITORING



AGNICO EAGLE

## CARIBOU MONITORING





# MITIGATION AND MONITORING PLANS

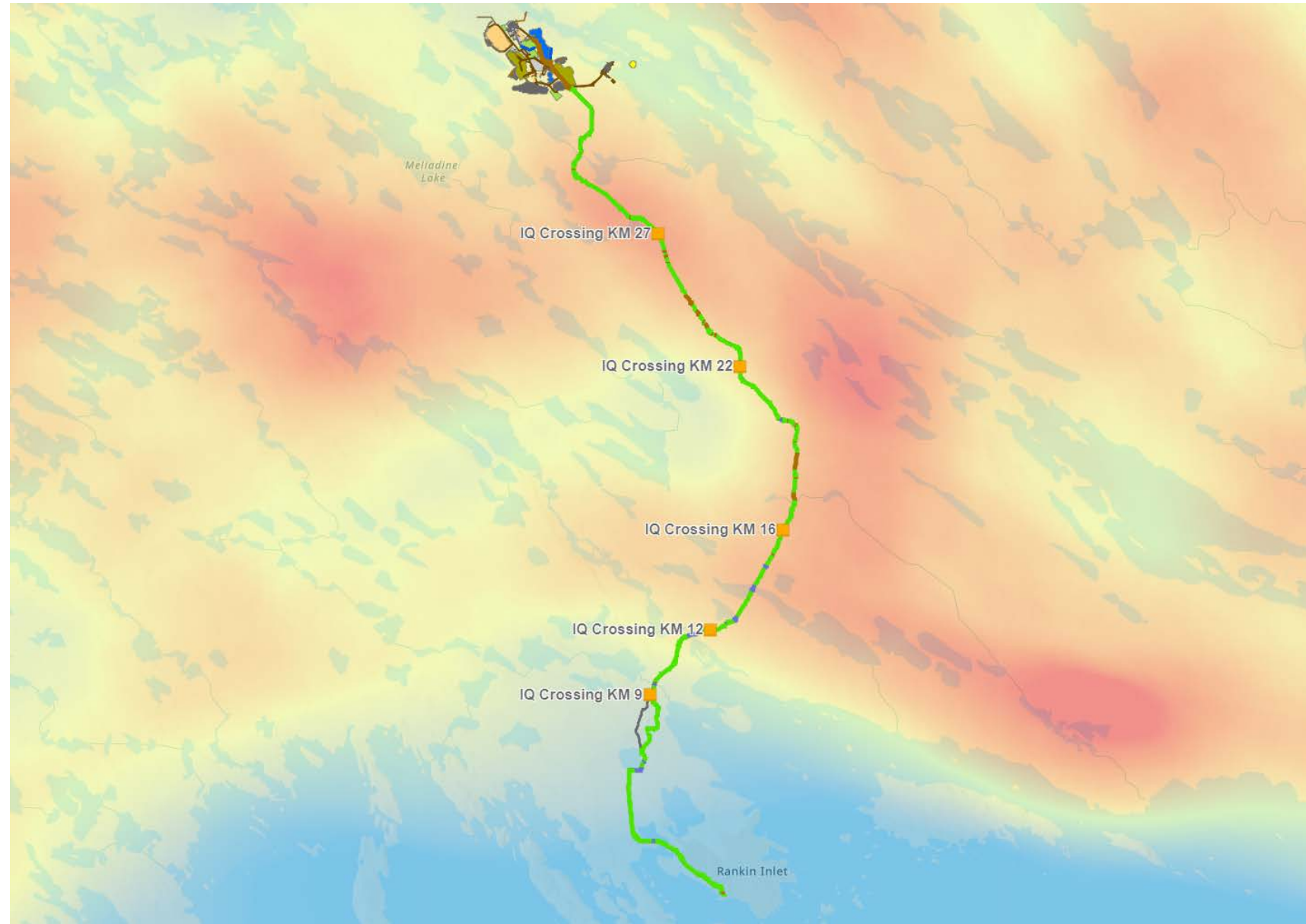




# IQ CROSSINGS AND GOVERNMENT SATELLITE COLLARS



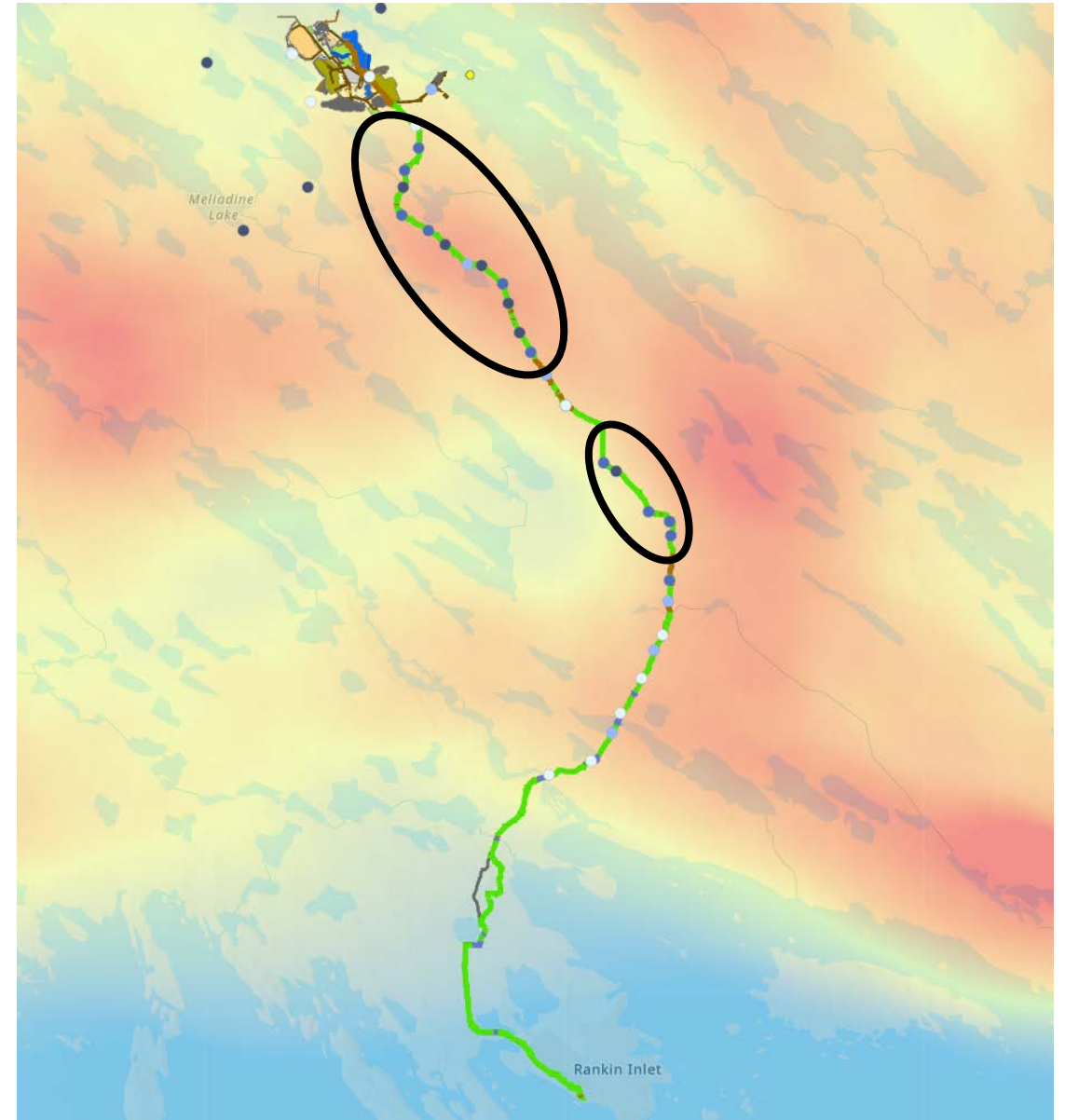
- Agnico use data from government satellite collars.
- Examines where and when caribou cross the road/waterline.





# TRAIL CAMERAS

Trail cameras (30) have been placed along the AWAR during June to identify any other locations where caribou may cross.





# WATERLINE COVER DESIGN

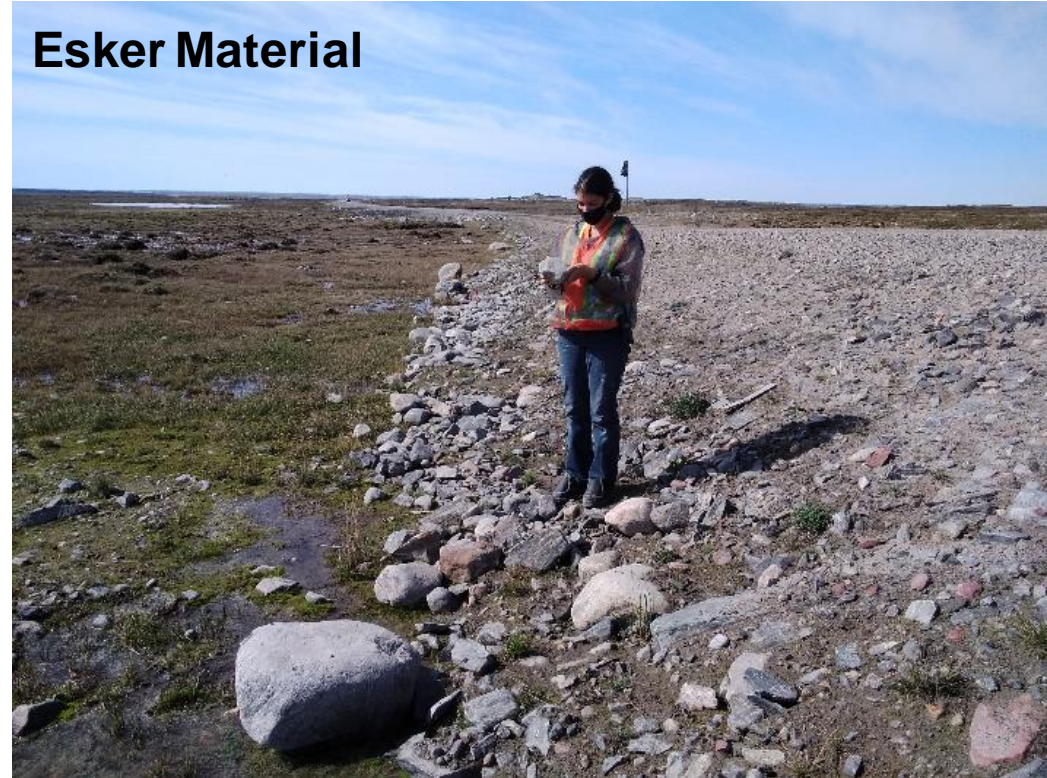
Agnico Eagle is using trail cameras to study whether the material used to construct the road affects where caribou cross the road.

We will use the results of this study to design the waterline covering.

**Quarry Material**



**Esker Material**

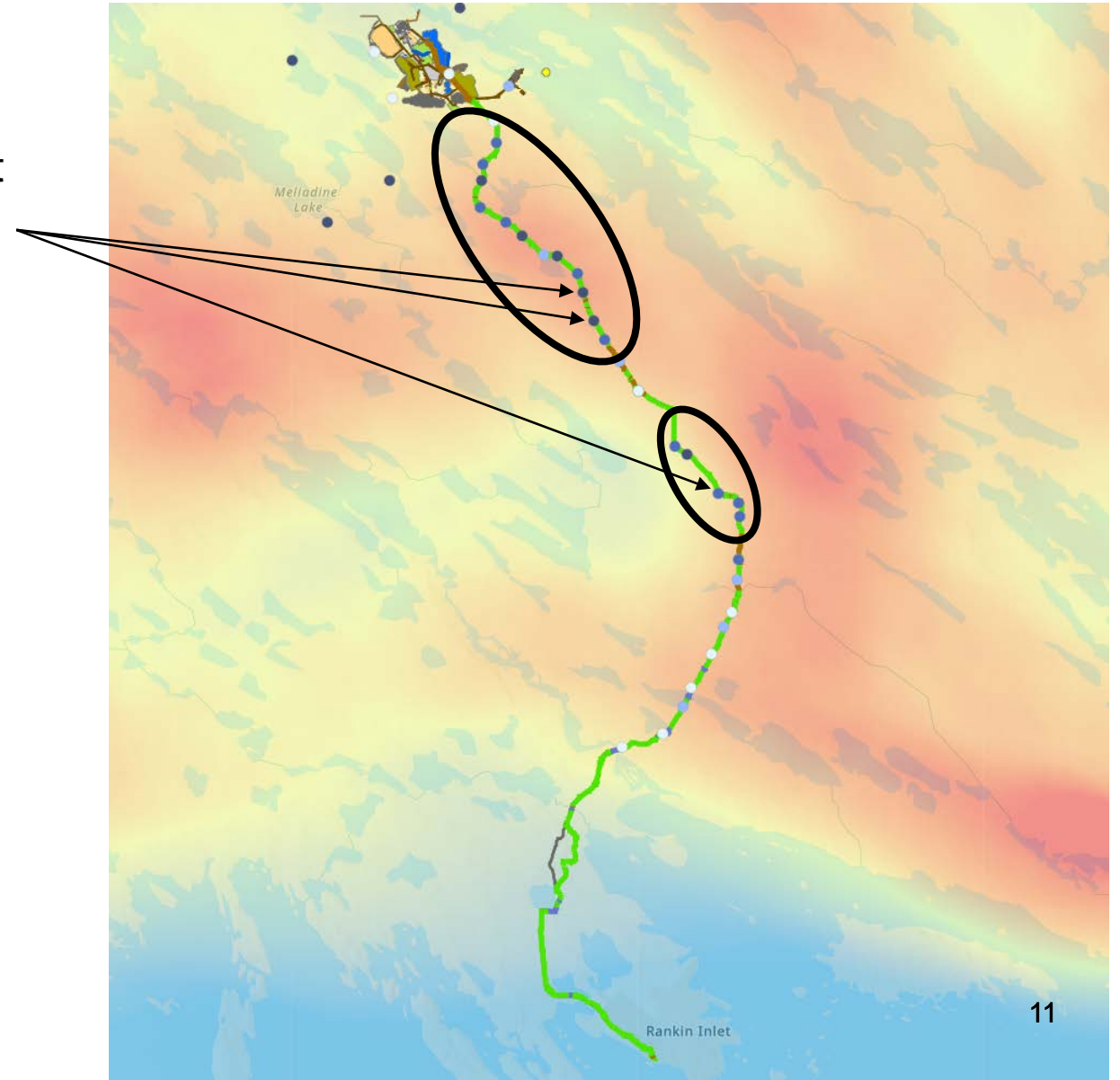




# ROAD SURVEYS

**Road Surveys** are conducted every day when caribou may be on site (June).

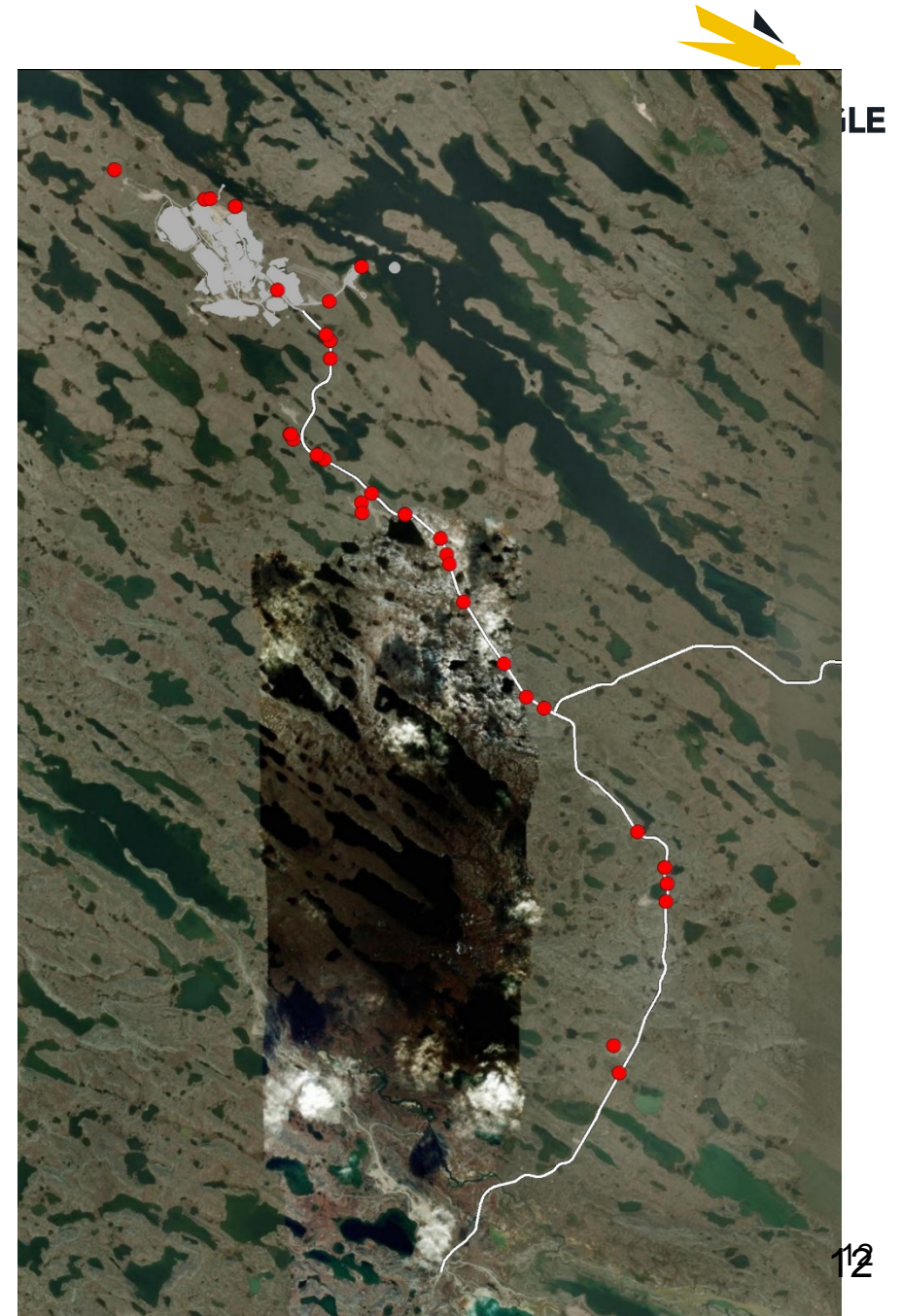
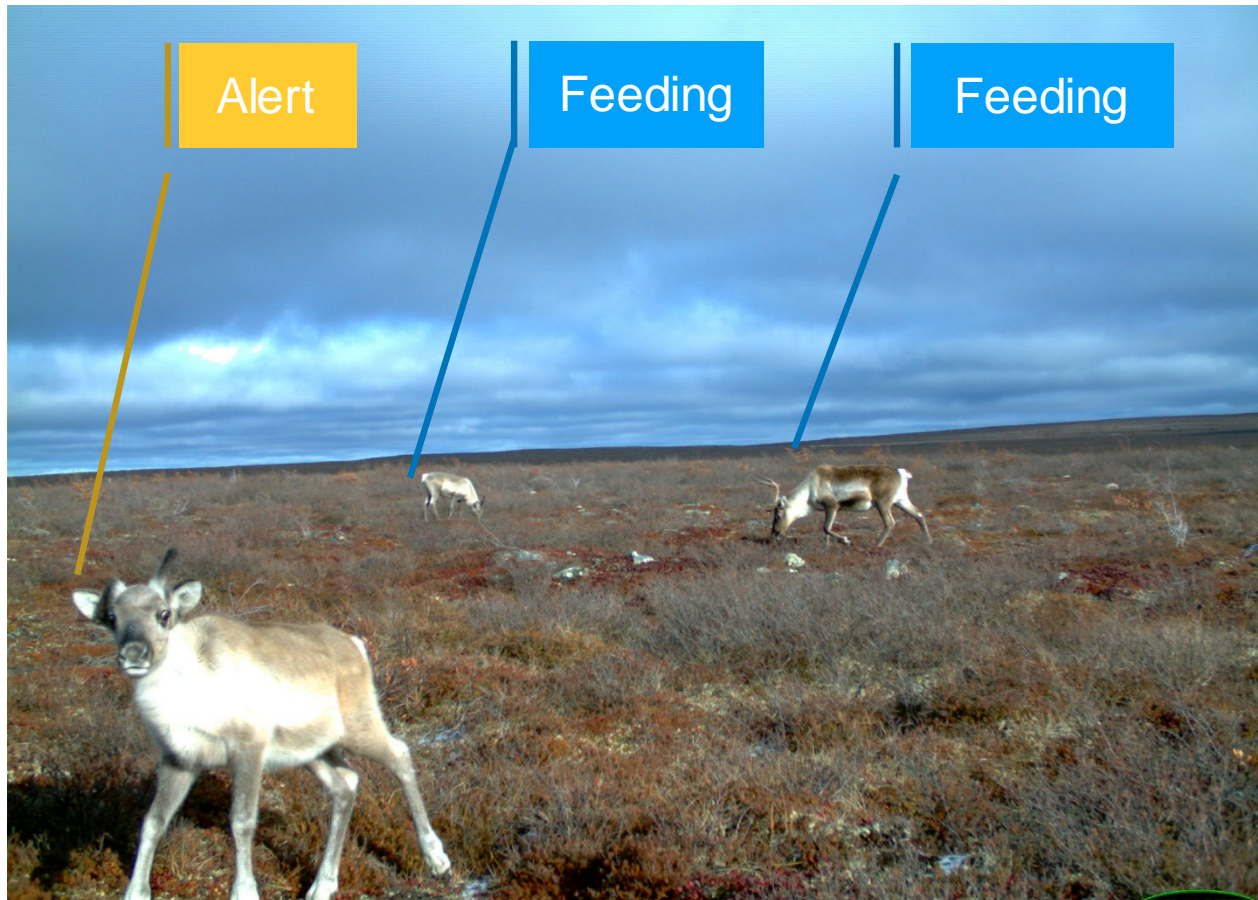
These surveys have identified several locations that are commonly used as crossings (16, 24, 25 km).





# CARIBOU BEHAVIOUR MONITORING

**Behaviour Surveys** are conducted whenever groups of caribou are observed near the site – largely in June. Standard scan sample methods from GNWT are used. 2020 monitoring locations are displayed in red on the right.



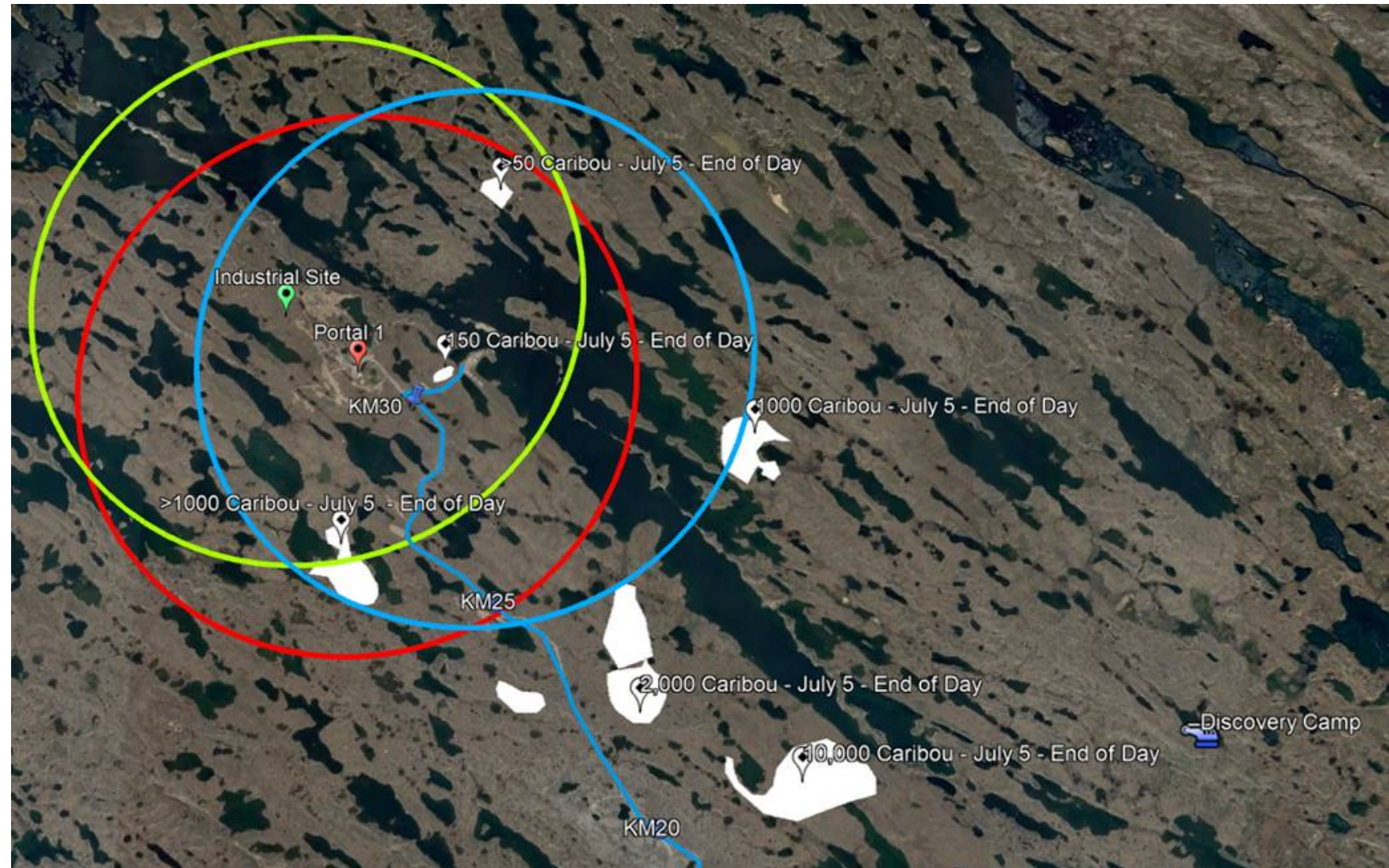


# MONITORING – CARIBOU OCCURRENCE

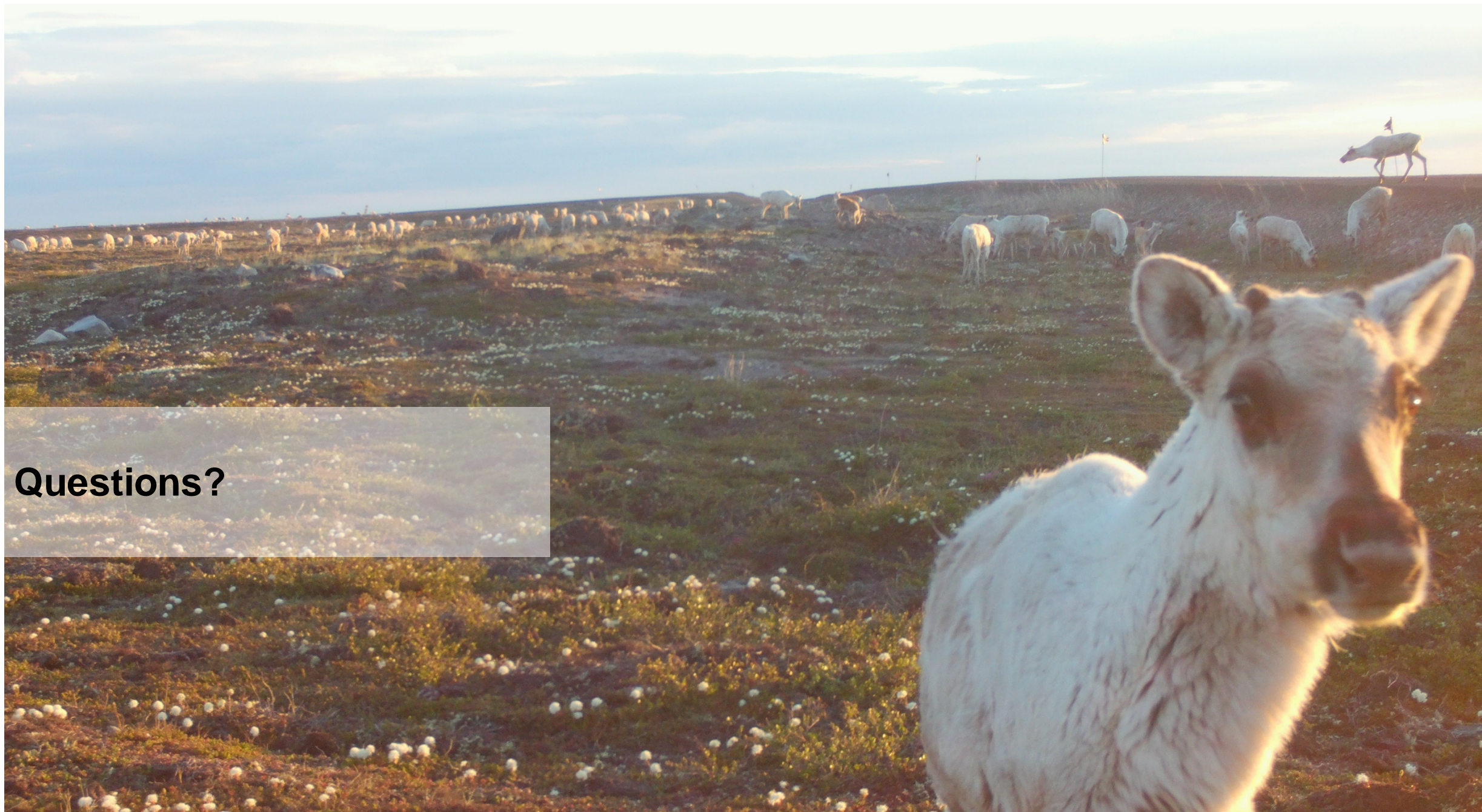


AGNICO EAGLE

**Height of Land Surveys** are conducted to identify where groups of caribou are (the white polygons) and whether they are within 5 km of site (circles).







**Questions?**