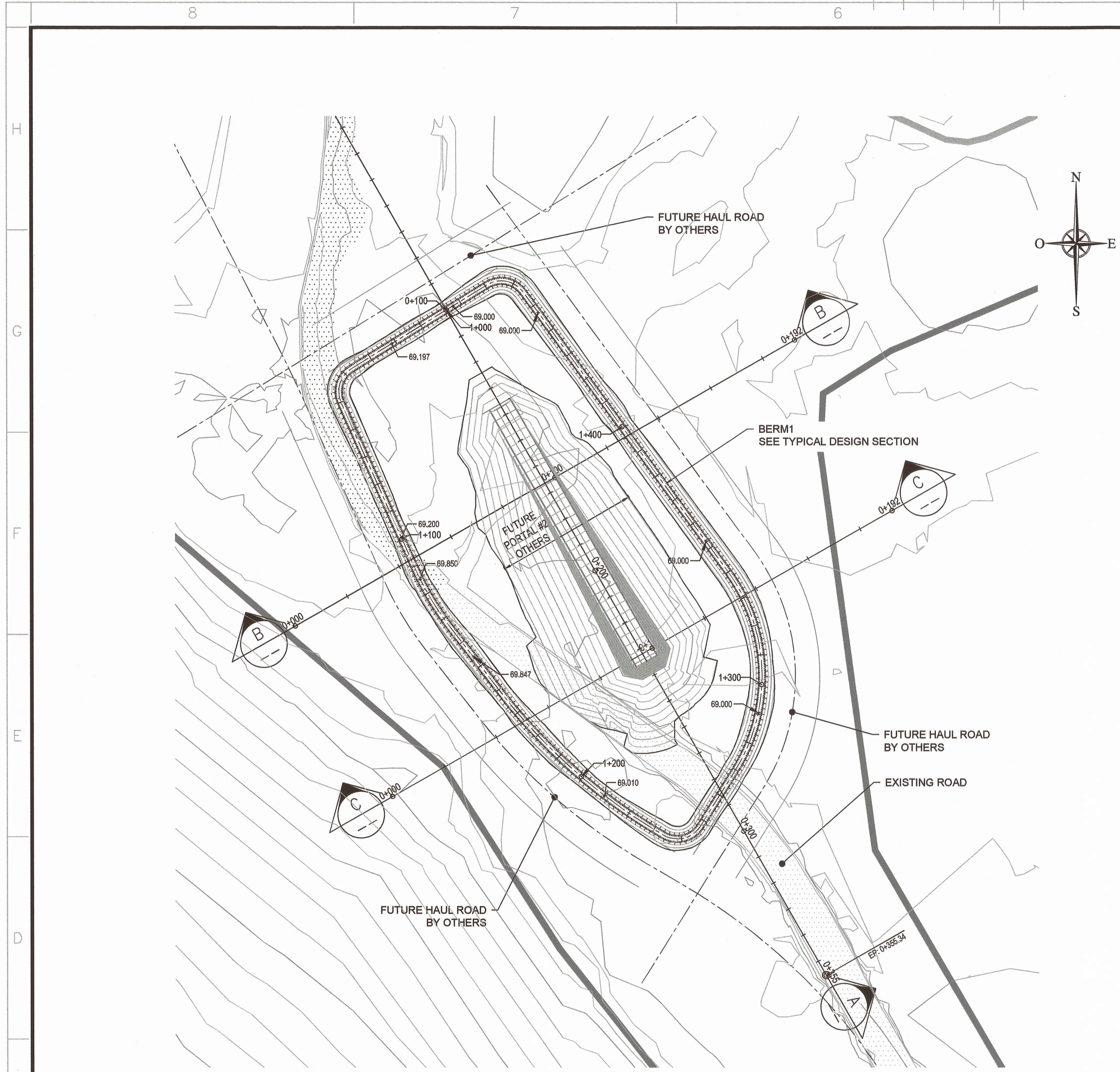


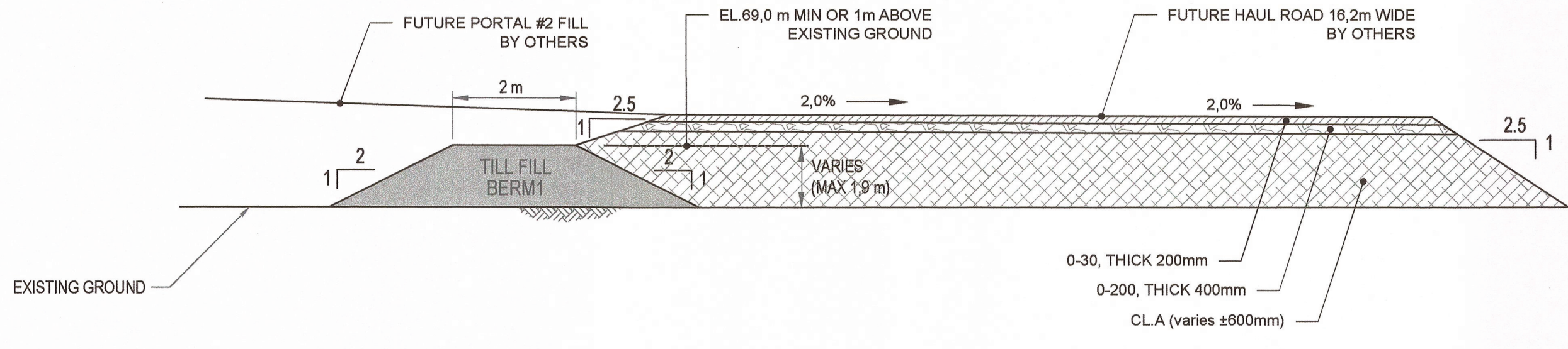
Appendix O

Infrastructures As-Built and Design

Meliadine Interim Closure and Reclamation Plan - Update 2020		Original -V.00
2020/07/30	674942-4000-4EER-0002	Technical Report

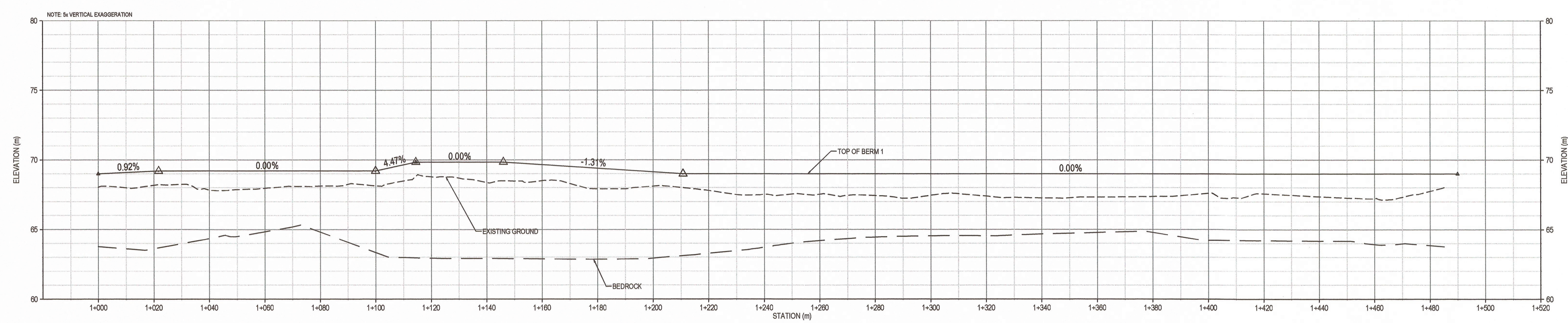


PLAN / VIEW
SCALE 1:1000



TYPICAL DESIGN SECTION - BERM1
N.T.S.

QUANTITIES CONSTRUCTION CHART *	
BERM1	
MATERIAL	QUANTITIES
SELECTED UNFROZEN TILL FILL	3260 m ³
* MATERIAL QUANTITIES ARE ESTIMATED IN-PLACE QUANTITIES	



PROFILE OF BERM 1 ALONG
CENTRELINE
HOR. SCALE: 1:1000
VERT. SCALE: 1:200



NOTES GÉNÉRALES / GENERAL NOTES

**POUR CONSTRUCTION
FOR CONSTRUCTION**
AGNICO EAGLE
DATE: 2017-02-17

INFORMATION D'ORDRE EST LA PROPRIÉTÉ DE AGNICO EAGLE LTD. ET DOIT ÊTRE RETENUE SUR DEMANDE. SANS AUTORISATION ÉCRITE, AUCUN DROIT REPRODUCTION NI CONCEPTS NI AUTRES ET TOUTE UTILISATION SAUF CELE POUR L'USAGE D'INFORMATION EST INTERDITE. © AGNICO EAGLE LTD.

THE INFORMATION HERE ON IS THE PROPERTY OF AGNICO EAGLE LTD. AND MUST BE RETAINED UPON REQUEST. WITHOUT WRITTEN PERMISSION, NO COPYING, REPRODUCTION, OR OTHER USE MAY BE MADE WITHOUT THE WRITTEN PERMISSION OF AGNICO EAGLE LTD.

DESSINS EN RÉFÉRENCE / REFERENCE DRAWINGS		
TITRE / TITLE	#	DWG



REV.	DATE	DESCRIPTION	PAR/ÉLÉ	APP.	LOG/INT.
0	2017-02-17	ISSUED FOR CONSTRUCTION	P.J.H.	J.A.	
A	2017-02-13	ISSUED FOR COMMENTS	P.J.H.	J.A.	

PERMIT TO PRACTICE
TETRA TECH INDUSTRIES, INC.
O/A TETRA TECH
Signature: *J.M.F. Alarie*
Date: 20-02-17
PERMIT NUMBER: P 1029
TANU Association of Professional Engineers and Geoscientists

TITRE / TITLE
AGNICO EAGLE -- MELIADINE DIVISION
695 -- WATER MANAGEMENT
230 -- GENERAL EARTH WORKS
BERM #1
LAYOUT PLAN AND PROFILE

DESSINÉ PAR / DRAWN BY	PATRICK HAMEL	DATE	2017-02-17
VÉRIFIÉ PAR / CHECKED BY	MELANIE YIP WOON SUN	DATE	2017-02-17
APPROUVÉ PAR / APPROVED BY	JOSÉE ALARIE	DATE	2017-02-17

ÉCHELLE / SCALE AS INDICATED DATE 2016-09-15

NO. DESSIN / DRAWING NO. 65-695-230-219

NO. PROJET / PROJECT NO.	REVISION	FEUILLE / SHEET
6515/28920	0	1 / 1