

## APPENDIX G

---

### **EIA Submission Errata**

Table 5.5 of the Mine Waste and Water Quality report

“General Site Plan” Figure in the Project Alternatives Report

There was an error in rock and till volumes calculated from tonnages in **Table 5.5** of the **Mine Waste and Water Quality report**. A revised table is provided below.

**5.5: Estimated Waste Rock Quantities – Portage Rock Storage Facility**

Item	Tonnes Rock	Tonnes Till	Volume Rock (m <sup>3</sup> )	Volume Till (m <sup>3</sup> )
Total waste rock and overburden produced from Portage and Goose Island pit	104,920,000	9,164,000	55,221,000	5,390,000
Less: Waste rock back into pit (Goose Island and Portage areas combined) <sup>1</sup>	31,600,000		16,600,000	-
Less: Waste rock and overburden used for construction, including dikes, Vault road, road surfacing, and tailings and dike capping	15,602,800	1,056,000	8,212,000	621,000
Waste rock and overburden to be stored in Portage Rock storage facility	57,717,200	8,108,000	30,409,000	4,769,000

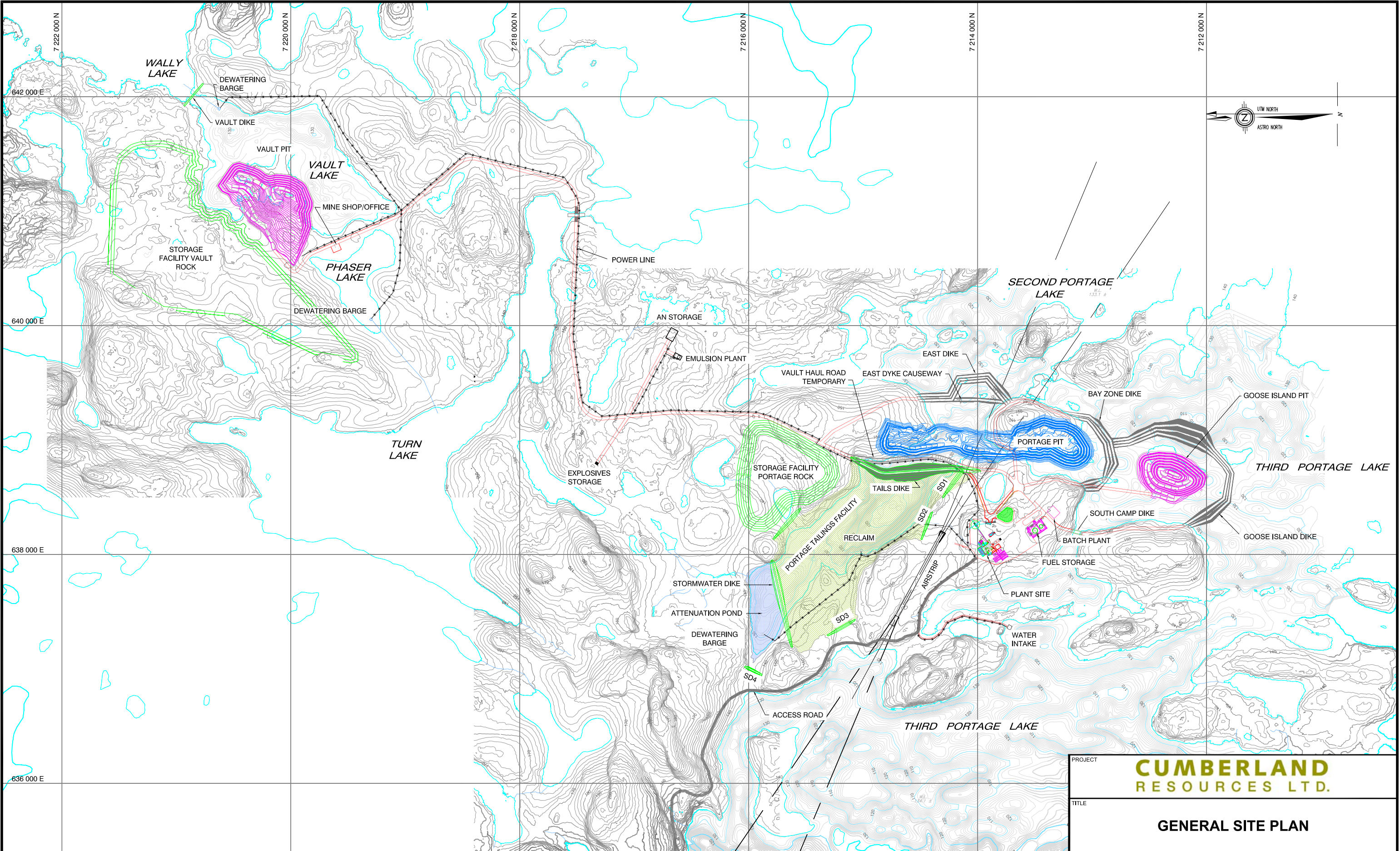
Note: 1. Material balance table based on revised production forecast schedule provided by AMEC (March, 2005).

In the **Project Alternatives report**, the “**General Site Plan**” figure was distorted.

A replacement copy of this figure is provided on the following page.



REVISION DATE: 05/11/11 10:46am By: WLI CADD FILE: N:\Bur-Graphics\Projects\2005\1413\05-1413-036A\1050\CAD\1300 Project Alternatives\051413036A-1050-3.1.dwg



LEGEND

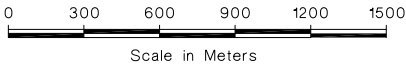
SD: Saddle Dam

NOTES

- 1) Topographic contour interval 2m.
- 2) Bathymetric contour interval 1m.

REFERENCES

- 1) Amec Americas Ltd., Drawing Number A1-131395-100-C-0001 (100-C-0001.DWG), Meadowbank Feasibility Study, April 2005.



PROJECT

CUMBERLAND  
RESOURCES LTD.

TITLE

GENERAL SITE PLAN

PROJECT No.	05-1413-036A	FILE No.	051413036A-1050-3.1
DESIGN	CJC	17OCT05	SCALE AS SHOWN REV. 0
CADD	WLI	17OCT05	
CHECK	CJC	17OCT05	
REVIEW	CJC	17OCT05	

FIGURE 3.1