

## **Appendix 2**

---

### **Meadowbank KVPL08D280 2021 Mine Plan**

---

---



**AGNICO EAGLE**

MEADOWBANK GOLD PROJECT

**Production Lease KVPL08D280  
2021 Mine Plan**

**January 2021**

## EXECUTIVE SUMMARY

Condition 5.09 of Production Lease KVPL08D280 for the Meadowbank Gold Project states:

*On or before January 1<sup>st</sup> in each year of the Term, Agnico Eagle shall deliver to KIA its annual Mine Plan for the next calendar year, detailing at least the following:*

- (i) a description of the activities and work that Agnico Eagle proposes to perform in that year on the Leased Land, together with a listing of major equipment to be brought onto the Leased Land; and*
- (ii) a description of the topographical features and any natural or manmade features, structures, works and waters that may be affected.*

This document presents the 2021 Annual Mine Plan for the Meadowbank Gold Project.

The Meadowbank gold mine began the operation phase of the project in February 2010, and thus, is entering its twelfth year of operations. In addition to routine activities throughout the 2021 season, a number of secondary construction/modification projects will be undertaken near the main mine site area. Tailings will be mainly deposited in the pit (Portage Pit A and Portage Pit E). If necessary, tailings deposition may occur in the North and South Cell to optimize the landform.

Environmental monitoring (wildlife, aquatic effects, groundwater, noise and air) will continue through 2021 in support of all operational undertakings at the Meadowbank site as required by the NWB Type A Water License 2AM-MEA1530 Amendment No. 4, NIRB Project Certificate No.004, DFO authorizations and MDMER regulations.

## TABLE OF CONTENT

<b>SECTION 1 •</b>	<b>INTRODUCTION .....</b>	<b>5</b>
<b>SECTION 2 •</b>	<b>2021 PLANNED EXPLORATION ACTIVITIES.....</b>	<b>6</b>
<b>SECTION 3 •</b>	<b>2021 PLANNED CONSTRUCTION ACTIVITIES.....</b>	<b>7</b>
3.1	Dike construction and tailings management .....	7
<b>SECTION 4 •</b>	<b>2021 PLANNED OPERATION ACTIVITIES .....</b>	<b>8</b>
4.1	Mining Plan.....	8
4.1.1	Portage Pit .....	8
4.1.2	Goose Pit .....	8
4.1.3	Vault Pit .....	8
4.1.4	Phaser and BB Phaser Pit.....	8
4.2	Waste Rock Management Plan.....	8
4.3	Equipment .....	9
<b>SECTION 5 •</b>	<b>2021 PLANNED ENVIRONMENTAL MONITORING.....</b>	<b>16</b>
5.1	Wildlife Monitoring .....	16
5.1.1	Terrestrial Advisory Group.....	16
5.1.2	Harvest Study .....	16
5.1.3	Habitat mapping.....	16
5.1.4	Breeding Bird Plot Surveys.....	16
5.1.5	Raptor Nest Surveys.....	17
5.1.6	Caribou Satellite-Collaring Program .....	17
5.1.7	Checklist Surveys and Wildlife Logs.....	17
5.1.8	AWAR and Mine-Site Road Surveys .....	18
5.1.9	Screening Level Risk Assessment .....	18
5.2	Aquatic Effects Monitoring Program.....	18
5.2.1	Core Receiving Environment Monitoring (CREMP) .....	18
5.2.2	Metal and Diamond Mining Effluent Regulations (MDMER) Monitoring .....	18
5.2.3	Water Quality and Flow Monitoring .....	19
5.2.4	Seepage Water from Waste Rock Storage Facility .....	22
5.2.5	Assay Road Seepage.....	22
5.2.6	Central Dike Seepage.....	22
5.2.7	Blast Monitoring .....	22
5.3	Groundwater Monitoring Program.....	23
5.4	Noise Monitoring Program.....	23
5.5	Air Monitoring Program .....	23
<b>SECTION 6 •</b>	<b>LOGISTICS.....</b>	<b>24</b>

**LIST OF TABLES**

Table 4-1 Equipment at Meadowbank and Whale Tail in 2021 ..... 9

**LIST OF FIGURES**

Figure 1: Meadowbank Mine Site 2021 Sampling Locations ..... 20  
Figure 2 : Vault 2021 Sampling Locations ..... 21

## **SECTION 1 • INTRODUCTION**

---

The Meadowbank gold mine began the operation phase of the project in February 2010, and thus, is entering its twelfth year of operations. In addition to routine activities throughout the 2021 season, a number of secondary construction/modification projects will be undertaken near the main mine site area. Tailings will be deposited in Portage Pit A and Portage Pit E. If required, tailings deposition may occur in the South Cell and the North Cell to optimize the landform.

The following sections outline the exploration, construction, operation and environmental activities planned for 2021 at the Meadowbank Gold Project, conducted in accordance with Production Lease KVPL08D280.

## **SECTION 2 • 2021 PLANNED EXPLORATION ACTIVITIES**

---

There are no exploration activities planned within the Production Lease KVPL08D280 in 2021.

There will be exploration conducted by the Exploration Division of Agnico Eagle Mines Ltd. in 2021, under the KIA Commercial Exploration Lease KVCL303H305.

## **SECTION 3 • 2021 PLANNED CONSTRUCTION ACTIVITIES**

---

Construction activities at the Meadowbank mine are mainly completed. There are several secondary projects and modifications to existing infrastructure that will continue in 2021, including in pit tailings deposition construction and progressive reclamation of the site.

### **3.1 DIKE CONSTRUCTION AND TAILINGS MANAGEMENT**

Tailings will be deposited in the Portage Pits. Some tailings deposition might occur in the South Cell and the North Cell using the existing infrastructure to optimize the landform. Dike construction and water management activities will include the following:

- In-pit deposition in Portage Pit A and Portage Pit E;
- Transfer of water from Goose Pit to Portage Pit A and Portage Pit E;
- Reclaim of water from Portage Pit A and Portage Pit E;
- Continue using the North Cell and South cell for tailings deposition to optimise landform (if deemed necessary);
- Minor remediation work at the North Cell Internal Structure (NCIS) in the North Cell of the Tailings Storage Facility; and
- Capping with NPAG a portion of the North tailings cell based on availability of equipment and material.



## **SECTION 4 • 2021 PLANNED OPERATION ACTIVITIES**

---

### **4.1 MINING PLAN**

No mining activity is planned to occur in 2021 at Meadowbank under the current LOM.

#### **4.1.1 Portage Pit**

The Ultimate Phase of Portage Pit was completed in 2019 therefore no production/mining is planned in 2021 under the current LOM.

#### **4.1.2 Goose Pit**

Goose pit was depleted in 2014, therefore no production/mining is planned in 2021 under the current LOM.

#### **4.1.3 Vault Pit**

Vault pit was depleted in 2019, therefore no production/mining is planned in 2021 under the current LOM.

#### **4.1.4 Phaser and BB Phaser Pit**

Phaser pit was depleted in 2018, therefore no production/mining is planned in 2021 under the current LOM.

BB Phaser pit was completely depleted in 2019, therefore no production/mining is planned in 2021 under the current LOM

### **4.2 WASTE ROCK MANAGEMENT PLAN**

As no mining is planned to occur in Meadowbank in 2021 there is no waste rock planned to be managed.

The final capping of the landfill within the WRSF will be completed in 2021.

### 4.3 EQUIPMENT

Table 4-1 lists the major equipment's that will be used or brought at Meadowbank and Whale Tail sites in 2021. Some of this equipment will be shared between the two sites.

As per discussions during the December 2020 TAG meeting, in 2021 there will be an additional 4 haul trucks added to the equipment list below as a result of increased mill throughput and compensation for road closures due to wildlife and adverse weather.

**Table 4-1 Equipment at Meadowbank and Whale Tail in 2021**

<b>Manufacturer</b>	<b>Unit Number</b>	<b>Description</b>
CATERPILLAR	61BAC03	BACKHOE CATERPILLAR 307
CATERPILLAR	61BAC04	BACKHOE CAT 330D (C9 ENGINE)
CATERPILLAR	61BAC07	BACKHOE CATERPILLAR 345DL
CATERPILLAR	61BAC09	BACKHOE 390DL
TEREX	61BAC10	BACKHOE TEREX O&K RH120-E
TEREX	61BAC11	BACKHOE BUCYRUS RH120-E
CATERPILLAR	61BAC13	BACKHOE CAT 6030
CATERPILLAR	61BAC14	BACKHOE CAT 6020B
CATERPILLAR	61BAC15	BACKHOE CAT 6015B
KUBOTA	61BAC16	KUBOTA MINI-SHOVEL
CATERPILLAR	61BAC17	BACKHOE CAT 336
CATERPILLAR	61BAC18	BACKOE CAT 6015B
MACLEAN	61BOL01	BOLTER MACLEAN MEM-975
MACLEAN	61BOL02	BOLTER MACLEAN MEM-975
MACLEAN	61BOL03	BOLTER MACLEAN MEM-975
HYSTER	61CDL01	CONTAINER HANDLER HYSTER RS46
CATERPILLAR	61DOZ01	DOZER D8T CATERPILLAR
CATERPILLAR	61DOZ02	DOZER D9T CATERPILLAR
CATERPILLAR	61DOZ05	DOZER D9T CATERPILLAR
CATERPILLAR	61DOZ06	DOZER D9T CATERPILLAR
CATERPILLAR	61DOZ07	DOZER D9T CATERPILLAR
CATERPILLAR	61DOZ08	WHEEL DOZER 834H
CATERPILLAR	61DOZ09	DOZER D6T LGP CATERPILLAR
CATERPILLAR	61DOZ10	DOZER D6T 20VP CATERPILLAR
CATERPILLAR	61DOZ11	DOZER D10T CATERPILLAR
HYSTER	61FKL02	FORK LIFT HYSTER RH35
CATERPILLAR	61FKL03	FORKLIFT GP40KL-LP

CATERPILLAR	61FKL05	FORK LIFT PD9000
CATERPILLAR	61FKL06	FORKLIFT CAT DP40KL
RAYMOND	61FKL07	RAYMOND LIFT
RAYMOND	61FKL08	RAYMOND LIFT
HYSTER	61FKL09	FORKLIFT S50XL
CATERPILLAR	61FKL10	ZOOM BOOM MODEL:TL1255C
CATERPILLAR	61FKL11	FORK LIFT
YALE	61FKL12	FORK LIFT
CATERPILLAR	61FKL13	FORK LIFT
CATERPILLAR	61GRA01	MOTOR GRADER 16H CAT
CATERPILLAR	61GRA02	MOTOR GRADER 160H CAT
CATERPILLAR	61GRA03	MOTOR GRADER 16M CAT
CATERPILLAR	61GRA04	MOTOR GRADER 16M CAT
CATERPILLAR	61GRA05	MOTOR GRADER 16M CAT
CATERPILLAR	61GRA06	MOTOR GRADER 16M CAT
CATERPILLAR	61GRA07	MOTOR GRADER 14M CAT
CATERPILLAR	61HTR01	HAUL TRUCK 777F CATERPILLAR 100T
CATERPILLAR	61HTR02	HAUL TRUCK 777F CATERPILLAR 100T
CATERPILLAR	61HTR03	HAUL TRUCK 777F CATERPILLAR 100T
CATERPILLAR	61HTR04	HAUL TRUCK 777F CATERPILLAR 100T
CATERPILLAR	61HTR05	HAUL TRUCK 777F CATERPILLAR 100T
CATERPILLAR	61HTR06	HAUL TRUCK 777F CATERPILLAR 100T
CATERPILLAR	61HTR07	HAUL TRUCK 777F CATERPILLAR 100T
CATERPILLAR	61HTR08	HAUL TRUCK 777F CATERPILLAR 100T
CATERPILLAR	61HTR09	HAUL TRUCK 777F CATERPILLAR 50T
CATERPILLAR	61HTR11	HAUL TRUCK 777F CATERPILLAR 100T
CATERPILLAR	61HTR12	HAUL TRUCK 777F CATERPILLAR 100T
CATERPILLAR	61HTR14	HAUL TRUCK 777F CATERPILLAR 100T
CATERPILLAR	61HTR15	WATER TRUCK 773D CATERPILLAR
CATERPILLAR	61HTR16	HAUL TRUCK 777F CATERPILLAR 100T
CATERPILLAR	61HTR17	HAUL TRUCK 777F CATERPILLAR 100T
CATERPILLAR	61HTR20	HAUL TRUCK 785B CATERPILLAR 150T
CATERPILLAR	61HTR21	HAUL TRUCK 785B CATERPILLAR 150T
CATERPILLAR	61HTR22	HAUL TRUCK 785B CATERPILLAR 150T
CATERPILLAR	61HTR23	HAUL TRUCK 785D CATERPILLAR 150T
CATERPILLAR	61HTR24	HAUL TRUCK 785D CATERPILLAR 150T
CATERPILLAR	61HTR25	HAUL TRUCK 785D CATERPILLAR 150T
CATERPILLAR	61HTR26	HAUL TRUCK 785C CATERPILLAR 150T
CATERPILLAR	61HTR28	HAUL TRUCK 785C CATERPILLAR 150T

CATERPILLAR	61HTR29	HAUL TRUCK 785D CATERPILLAR 150T
CATERPILLAR	61HTR30	HAUL TRUCK 785D CATERPILLAR 150T
CATERPILLAR	61HTR31	HAUL TRUCK 150T CAT 785D
CATERPILLAR	61HTR32	HAUL TRUCK 150T CAT 785D
CATERPILLAR	61HTR33	HAUL TRUCK 150T CAT 785D
CATERPILLAR	61HTR34	HAUL TRUCK 150T CAT 785D
CATERPILLAR	61HTR35	U/G TRUCK AD30 CAT
CATERPILLAR	61HTR36	U/G TRUCK CAT AD30
CATERPILLAR	61HTR37	U/G TRUCK CAT AD30
CATERPILLAR	61HTR38	U/G TRUCK CAT AD30
ATLAS COPCO	61JUM01	BOOMER 281 JUMBO DRILL 281
SANDVIK	61JUM02	JUMBO DRILL DD421
KENWORTH	61LHT01	KENWORTH TRUCK C500 6X6
KENWORTH	61LHT02	KENWORTH TRUCK C500 6X6
KENWORTH	61LHT03	KENWORTH TRUCK C500 6X6
KENWORTH	61LHT04	KENWORTH TRUCK C500 6X6
KENWORTH	61LHT05	KENWORTH TRUCK C500 6X6
KENWORTH	61LHT06	KENWORTH TRUCK C500 6X6
KENWORTH	61LHT08	KENWORTH TRUCK C500 6X6
KENWORTH	61LHT09	KENWORTH TRUCK C500 6X6
KENWORTH	61LHT10	KENWORTH TRUCK C500 6X6
KENWORTH	61LHT11	KENWORTH TRUCK C500 6X6
KENWORTH	61LHT12	KENWORTH TRUCK C500 6X6
KENWORTH	61LHT13	KENWORTH TRUCK C500 6X6
KENWORTH	61LHT14	KENWORTH TRUCK C500 6X6
KENWORTH	61LHT15	KENWORTH TRUCK C500 6X6
KENWORTH	61LHT16	KENWORTH TRUCK C500 6X6
KENWORTH	61LHT17	KENWORTH TRUCK C500 6X6
KENWORTH	61LHT18	KENWORTH TRUCK C500 6X6
KENWORTH	61LHT19	KENWORTH TRUCK C500 6X6
KENWORTH	61LHT20	KENWORTH TRUCK C500 6X6
KENWORTH	61LHT21	KENWORTH TRUCK C500 6X6
KENWORTH	61LHT22	KENWORTH TRUCK C500 6X6
KENWORTH	61LHT23	KENWORTH TRUCK C500 6X6
KENWORTH	61LHT24	KENWORTH TRUCK C500 6X6
KENWORTH	61LHT25	KENWORTH TRUCK C500 6X6
KENWORTH	61LHT26	KENWORTH TRUCK C500 6X6
KENWORTH	61LHT27	KENWORTH TRUCK C500 6X6
CATERPILLAR	61LOA01	LOADER IT14G

CATERPILLAR	61LOA02	LOADER IT14G
CATERPILLAR	61LOA03	LOADER 992G CATERPILLAR
CATERPILLAR	61LOA04	LOADER 992G CATERPILLAR
CATERPILLAR	61LOA05	LOADER 420E IT CATERPILLAR
CATERPILLAR	61LOA06	LOADER 966H CATERPILLAR
CATERPILLAR	61LOA08	LOADER TC44H JOHN DEERE
CATERPILLAR	61LOA09	LOADER 966H CATERPILLAR
CATERPILLAR	61LOA10	LOADER 980H CATERPILLAR
CATERPILLAR	61LOA11	BACKHOE CATERPILLAR 420E
CATERPILLAR	61LOA12	LOADER 980H CATERPILLAR
CATERPILLAR	61LOA13	LOADER 992K CATERPILLAR
KOMATSU	61LOA14	TIRE HANDLER LOADER
CATERPILLAR	61LOA15	LOADER 980K CATERPILLAR
CATERPILLAR	61LOA16	LOADER IT14G CATERPILLAR
CATERPILLAR	61LOA18	LOADER 966H CATERPILLAR
CATERPILLAR	61LOA19	LOADER 980K CATERPILLAR
CATERPILLAR	61LOA20	LOADER CAT 420FIT
CATERPILLAR	61LOA21	LOADER 918M CATERPILLAR
CATERPILLAR	61LOA22	LOADER 930G CATERPILLAR
CATERPILLAR	61LOA23	LOADER 924K CATERPILLAR
CATERPILLAR	61LOA24	LOADER 420F IT CATERPILLAR
CATERPILLAR	61LOA25	STEMMING LOADER 914M CAT
MANITOWOC	61MCR01	CRANE 120T MANITOWOC
TEREX	61MCR02	CRANE 80T TEREX
GROVE	61MCR03	CRANE 35T GROVE
INTERNATIONAL	61MCR05	25T INTERNATIONAL BOOM TRUCK
AMERICAN	61MCR06	CRANE 200T AMERICAN
ATLAS COPCO	61RBD01	ROTARY BLASTHOLE DRILL 6"
ATLAS COPCO	61RBD02	ROTARY BLASTHOLE DRILL 6"
ATLAS COPCO	61RBD03	ROTARY BLASTHOLE DRILL 6"
ATLAS COPCO	61RBD04	ROTARY BLASTHOLE DRILL 6"
ATLAS COPCO	61RBD06	DML PROD. DRILL 6" ATLAS
ATLAS COPCO	61RBD07	DML DRILL 6" ATLAS
ATLAS COPCO	61RBD08	DML DRILL 6" ATLAS
EPIROC	61RBD09	DML DRILL 6" EPIROC
SANDVICK	61RBD10	DI650I SANDVIK DRILL
SANDVICK	61RBD11	DI650I SANDVIK DRILL
HYSTER	61TPA03	CONTAINER HANDLER
INGERSOL RAND	61TPA04	INGERSOL RAND ZOOM BOOM 1056C

CATERPILLAR	61TPA06	TELEHANDLER TL1055D
GENIE	61TPA07	ZOOM BOOM GENIE GTH844
LANTIS	61TPA09	TELEHANDLER LANTIS 828
GENIE	61TPA10	GENIE TELEHANDLER
MANITOU	61TPA11	MANITOU MTL625
KENWORTH	61TRK01	KENWORTH WATER TRUCK 4000 GL
KENWORTH	61TRK05	KENWORTH TRUCK C-500 (3AXLE TRACTOR)
FORD	61TRK07	WATER DELIVERY TRUCK FORD
FORD	61TRK08	SEPTIC TRUCK FORD
MAC	61TRK11	CEMENT MIXER TRUCK 10CYD
KENWORTH	61TRK16	KENWORTH TRUCK
KENWORTH	61TRK17	KENWORTH TRUCK
KENWORTH	61TRK18	KENWORTH TRUCK AUTO. 2007
STERLING	61TRK21	AT9500 FUEL TRUCK
INTERNATIONAL	61TRK22	SNOW PLOW WITH WING&SANDER
INTERNATIONAL	61TRK23	SNOW PLOW WITH WING&SANDER
GMC	61TRK24	TOP KICK STEAMER TRUCK
INTERNATIONAL	61TRK31	MECHANICAL SERVICE TRUCK
GMC	61TRK32	GMC PLANE FUEL TANKER
CATERPILLAR	61TRK33	CAT LUBE TRUCK T300
STERLING	61TRK34	STERLING SERVICE TRUCK
PETERBILT	61TRK35	FUEL TRUCK PETERBILT
KENWORTH	61TRK42	C500 FUEL TRUCK
KENWORTH	61TRK43	C500 WATER TRUCK
KENWORTH	61TRK44	C500 SERVICE TRUCK
KENWORTH	61TRK45	C500 LUBE TRUCK
KENWORTH	61TRK46	T400 FIRE TRUCK
MACLEAN	61TRK51	BOOM TRUCK
SMITH EQUIPMENT	61TRL25	TOWHAUL TRAILER
SPLEIPNER	61TRL26	TYPE: E310-1000
BOBCAT	61SKD06	SKID STEER S70
LARUE	61SBL04	SNOWBLOWER T85-R52
INDIRECT FIRED	61HEA50	FROST-FIGHTER IDF-500
INDIRECT FIRED	61HEA51	FROST-FIGHTER IDF-500
HUTCHINSON	61TRL27	FUEL TANKER JET-A (52000 lbs)
TEMISKO	61TRL45	130T OFF ROAD LOW BOY
TEMISKO	61TRL101	SIDE DUMP B-TRAIN TRAILER LEAD
TEMISKO	61TRL102	SIDE DUMP B-TRAIN TRAILER LEAD
TEMISKO	61TRL103	SIDE DUMP B-TRAIN TRAILER LEAD

TEMISKO	61TRL104	SIDE DUMP B-TRAIN TRAILER LEAD
TEMISKO	61TRL105	SIDE DUMP B-TRAIN TRAILER LEAD
TEMISKO	61TRL106	SIDE DUMP B-TRAIN TRAILER LEAD
TEMISKO	61TRL107	SIDE DUMP B-TRAIN TRAILER LEAD
TEMISKO	61TRL108	SIDE DUMP B-TRAIN TRAILER LEAD
TEMISKO	61TRL109	SIDE DUMP B-TRAIN TRAILER LEAD
TEMISKO	61TRL110	SIDE DUMP B-TRAIN TRAILER LEAD
TEMISKO	61TRL111	SIDE DUMP B-TRAIN TRAILER LEAD
TEMISKO	61TRL112	SIDE DUMP B-TRAIN TRAILER LEAD
TEMISKO	61TRL113	SIDE DUMP B-TRAIN TRAILER LEAD
TEMISKO	61TRL114	SIDE DUMP B-TRAIN TRAILER LEAD
TEMISKO	61TRL115	SIDE DUMP B-TRAIN TRAILER LEAD
TEMISKO	61TRL116	SIDE DUMP B-TRAIN TRAILER LEAD
TEMISKO	61TRL117	SIDE DUMP B-TRAIN TRAILER LEAD
TEMISKO	61TRL118	SIDE DUMP B-TRAIN TRAILER LEAD
TEMISKO	61TRL119	SIDE DUMP B-TRAIN TRAILER LEAD
TEMISKO	61TRL120	SIDE DUMP B-TRAIN TRAILER LEAD
TEMISKO	61TRL121	SIDE DUMP B-TRAIN TRAILER LEAD
TEMISKO	61TRL122	SIDE DUMP B-TRAIN TRAILER LEAD
TEMISKO	61TRL123	SIDE DUMP B-TRAIN TRAILER LEAD
TEMISKO	61TRL124	SIDE DUMP B-TRAIN TRAILER LEAD
TEMISKO	61TRL125	SIDE DUMP B-TRAIN TRAILER LEAD
TEMISKO	61TRL126	SIDE DUMP B-TRAIN TRAILER LEAD
TEMISKO	61TRL127	SIDE DUMP B-TRAIN TRAILER LEAD
TEMISKO	61TRL128	SIDE DUMP B-TRAIN TRAILER LEAD
TEMISKO	61TRL129	SIDE DUMP B-TRAIN TRAILER LEAD
TEMISKO	61TRL130	SIDE DUMP B-TRAIN TRAILER LEAD
TEMISKO	61TRL131	SIDE DUMP B-TRAIN TRAILER LEAD
TEMISKO	61TRL132	SIDE DUMP B-TRAIN TRAILER LEAD
TEMISKO	61TRL133	SIDE DUMP B-TRAIN TRAILER LEAD
TEMISKO	61TRL201	SIDE DUMP B-TRAIN TRAILER REAR
TEMISKO	61TRL202	SIDE DUMP B-TRAIN TRAILER REAR
TEMISKO	61TRL203	SIDE DUMP B-TRAIN TRAILER REAR
TEMISKO	61TRL204	SIDE DUMP B-TRAIN TRAILER REAR
TEMISKO	61TRL205	SIDE DUMP B-TRAIN TRAILER REAR
TEMISKO	61TRL206	SIDE DUMP B-TRAIN TRAILER REAR
TEMISKO	61TRL207	SIDE DUMP B-TRAIN TRAILER REAR
TEMISKO	61TRL208	SIDE DUMP B-TRAIN TRAILER REAR
TEMISKO	61TRL209	SIDE DUMP B-TRAIN TRAILER REAR

TEMISKO	61TRL210	SIDE DUMP B-TRAIN TRAILER REAR
TEMISKO	61TRL211	SIDE DUMP B-TRAIN TRAILER REAR
TEMISKO	61TRL212	SIDE DUMP B-TRAIN TRAILER REAR
TEMISKO	61TRL213	SIDE DUMP B-TRAIN TRAILER REAR
TEMISKO	61TRL214	SIDE DUMP B-TRAIN TRAILER REAR
TEMISKO	61TRL215	SIDE DUMP B-TRAIN TRAILER REAR
TEMISKO	61TRL216	SIDE DUMP B-TRAIN TRAILER REAR
TEMISKO	61TRL217	SIDE DUMP B-TRAIN TRAILER REAR
TEMISKO	61TRL218	SIDE DUMP B-TRAIN TRAILER REAR
TEMISKO	61TRL219	SIDE DUMP B-TRAIN TRAILER REAR
TEMISKO	61TRL220	SIDE DUMP B-TRAIN TRAILER REAR
TEMISKO	61TRL221	SIDE DUMP B-TRAIN TRAILER REAR
TEMISKO	61TRL222	SIDE DUMP B-TRAIN TRAILER REAR
TEMISKO	61TRL223	SIDE DUMP B-TRAIN TRAILER REAR
TEMISKO	61TRL224	SIDE DUMP B-TRAIN TRAILER REAR
TEMISKO	61TRL225	SIDE DUMP B-TRAIN TRAILER REAR
TEMISKO	61TRL226	SIDE DUMP B-TRAIN TRAILER REAR
TEMISKO	61TRL227	SIDE DUMP B-TRAIN TRAILER REAR
TEMISKO	61TRL228	SIDE DUMP B-TRAIN TRAILER REAR
TEMISKO	61TRL229	SIDE DUMP B-TRAIN TRAILER REAR
TEMISKO	61TRL230	SIDE DUMP B-TRAIN TRAILER REAR
TEMISKO	61TRL231	SIDE DUMP B-TRAIN TRAILER REAR
TEMISKO	61TRL232	SIDE DUMP B-TRAIN TRAILER REAR
TEMISKO	61TRL233	SIDE DUMP B-TRAIN TRAILER REAR



## **SECTION 5 • 2021 PLANNED ENVIRONMENTAL MONITORING**

---

The studies discussed below may be impacted by restrictions related to COVID 19 and therefore may require adjustment throughout 2021.

### **5.1 WILDLIFE MONITORING**

All wildlife monitoring is conducted in accordance to the Terrestrial Ecosystem Management Plan (TEMP) and discussions with the Terrestrial Advisory Group (TAG).

#### **5.1.1 Terrestrial Advisory Group**

As part of the Terrestrial Advisory Group (TAG), meeting to discuss Project's mitigation, monitoring, and adaptive management measures related to the protection of wildlife will continue to be held in 2021.

#### **5.1.2 Harvest Study**

The Hunter Harvest Study (HHS), through regular visits, has contributed to developing a strong relationship with local harvesters, the HTO and GN Department of Environment (DOE). The purpose of the HHS is to monitor and document the spatial distribution, seasonal patterns, and harvest rates of hunter kills and angler catches within the Meadowbank Local Study Area (LSA). Hunter Harvest Study will continue in 2021.

#### **5.1.3 Habitat mapping**

The habitat mapping monitoring program was developed to describe the overall area of different Ecological Land Classification (ELC) units lost due to mine-related activities at three primary locations: Main and Vault sites (which together encompass the mine site), and the AWAR. The primary objective of the habitat mapping monitoring program is to confirm that estimated habitat losses associated with mine site and AWAR construction have not exceeded the threshold limits identified in the TEMP plus approved extensions. Habitat mapping was last completed in 2019, the next program is to be conducted in 2022.

#### **5.1.4 Breeding Bird Plot Surveys**

The breeding bird PRISM plot monitoring program was designed to evaluate potential project-related changes in breeding bird species abundance, richness and diversity over time and is one component of the larger monitoring strategy to evaluate the success of mitigation measures to minimize the amount of vegetation that is removed or degraded by the project.

A comprehensive analysis of the data from 2003 to 2015 was completed in 2020 to validate the need for future PRISM plot monitoring and replacing the monitoring with an ECCC recommended program. The statistical analysis did not find any significant effect of mine-related infrastructure and activity on bird abundance, diversity, and community composition. The absence of effect supports replacing the PRISM plot monitoring program with an ECCC recommended program. The new

monitoring program would better contribute to national and regional monitoring efforts and is under review and approval by the ECCC. More discussion will be held with ECCC in 2021 before the next planned field season to get their approval on the conclusion of the report submitted and establishment of the proposed monitoring below.

The new program would consist of 24 PRISM plots, GIS-randomly selected by ECCC within the Meadowbank area. The plots would be surveyed every five years with 12 plots surveyed in each of two years. In addition, a Breeding Bird Survey (BBS) route would be established along the Meadowbank AWAR and will be surveyed annually.

Surveys are to be conducted in 2021 under the new ECCC approved monitoring program.

### **5.1.5 Raptor Nest Surveys**

The raptor nest survey monitoring program has been designed to confirm that mine-related activities do not result in inadvertent negative effects on nesting raptors. Agnico Eagle will survey historical sites along the AWAR and periodically visit the nests to determine site occupancy in conjunction with AWAR road survey. Agnico Eagle is working closely with Alastair Franke (Arctic Raptors Inc.) to assist in managing and mitigating any potential disturbance to raptors and possible nest sites.

### **5.1.6 Caribou Satellite-Collaring Program**

Agnico Eagle is assisting the GN in a Caribou satellite-collaring program within the Meadowbank Regional Study Area (RSA). Information on the status and location of various herds that use the RSA at different times of the year is an important component of on-going monitoring and management efforts at the mine site and along the AWAR. The collaring program was initiated in May 2008 with subsequent deployments over the years.

In collaboration with the GN DOE Wildlife branch, Agnico Eagle agreed, in 2013, to the Memorandum of Understanding (MOU) to contribute to the regional ungulate monitoring program. A new MOU is currently under discussion with the GN and is expected to be active in 2021. The majority of the contribution will go towards continued caribou collaring but will also assist in a detailed Qamanirjuaq herd survey or other GN led initiatives planned for 2021. These collaring data will be used to assist Agnico Eagle in anticipating large herds passing near mine development and contribute to appropriate management decisions.

### **5.1.7 Checklist Surveys and Wildlife Logs**

At the mine site, noteworthy wildlife sightings are recorded in an on-site wildlife log, which is tabulated at the end of each year and included in the annual wildlife monitoring summary report. Meadowbank employees are also encouraged to record wildlife sightings on a daily basis. A monthly wildlife report is sent to the GN DOE.

### **5.1.8 AWAR and Mine-Site Road Surveys**

The AWAR and Mine-Site road surveys monitoring program has been designed to evaluate sensory disturbance to wildlife, particularly Caribou and Muskox, utilizing habitats adjacent to the road. Road kill information and large Caribou herds are also documented to facilitate the implementation of adaptive management strategies. The terrain on both sides of the road (to a maximum horizontal distance of 1 km) is surveyed as the vehicle progresses at a maximum speed of 30 km/hr. For each sighting, the vehicle is safely parked in a road pullout and UTM coordinates are recorded along with estimated distance of animals from the road, habitat type and direction of movement.

The AWAR survey monitoring program will continue on an annual basis.

### **5.1.9 Screening Level Risk Assessment**

As a requirement for the Meadowbank Gold site's Environmental Health Monitoring Plan (NIRB - Condition 67), Agnico Eagle collected field data in 2014 in support of a Screening Level Risk Assessment (SLRA) and submitted a report with the 2014 annual report. It follows the baseline SLRA completed by Azimuth Consulting Group Inc. in 2006, 2011, 2014 and 2017 reports completed by Baxter Consulting. It provided an updated evaluation of soil and vegetation tissue chemistry as well as an assessment of risk to resident birds, mammals and a conservative estimate of potential impacts to local harvesters due to consumption of wildlife. Sampling activities were planned for 2020, but due to COVID 19 the program was placed on hold until 2021.

## **5.2 AQUATIC EFFECTS MONITORING PROGRAM**

### **5.2.1 Core Receiving Environment Monitoring (CREMP)**

The CREMP has been implemented every year since 2006, with some modifications (e.g., station additions, parameter deletions/additions, sampling frequency and intensity), to improve the program and to comply with regulatory requirements (e.g., the NWB Type A Water License). This monitoring program will continue throughout the operations and closure phases of the mine project. Monitoring will continue to be conducted at 12 sampling stations (6 near fields; 2 mid-fields; 1 far-field; 4 references) for limnology, water and sediment chemistry, phytoplankton and benthic invertebrate community.

### **5.2.2 Metal and Diamond Mining Effluent Regulations (MDMER) Monitoring**

In 2021, Meadowbank Site will have one discharge point subject to MDMER regulations: East Dike Seepage, discharging into Second Portage Lake. Consequently, Agnico Eagle is monitoring this discharge in accordance with the MDMER (and Water License) requirements. This includes weekly sampling for metals, monthly toxicity testing, and monitoring water quality in the release and control areas of Second Portage Lake (with Third Portage South Basin as a reference). Furthermore, in 2014, Agnico Eagle completed the Biological Monitoring Study Cycle 2 in Third Portage Lake as per MDMER Schedule 5 Part 2. In 2017, Agnico Eagle completed the Biological Monitoring Study Cycle 3 in Wally Lake as no more water was discharging from the Portage Attenuation Pond since November 2014, as the former South Cell Attenuation Pond became tailings storage facility in Q4 2014. The Biological Monitoring Study Cycle 4 was completed in 2020 and the Interpretive Report

will be submitted in July 2021. This program is regulated by Environment and Climate Change Canada and is designed specifically to evaluate the effects of effluent discharge on the receiving environment.

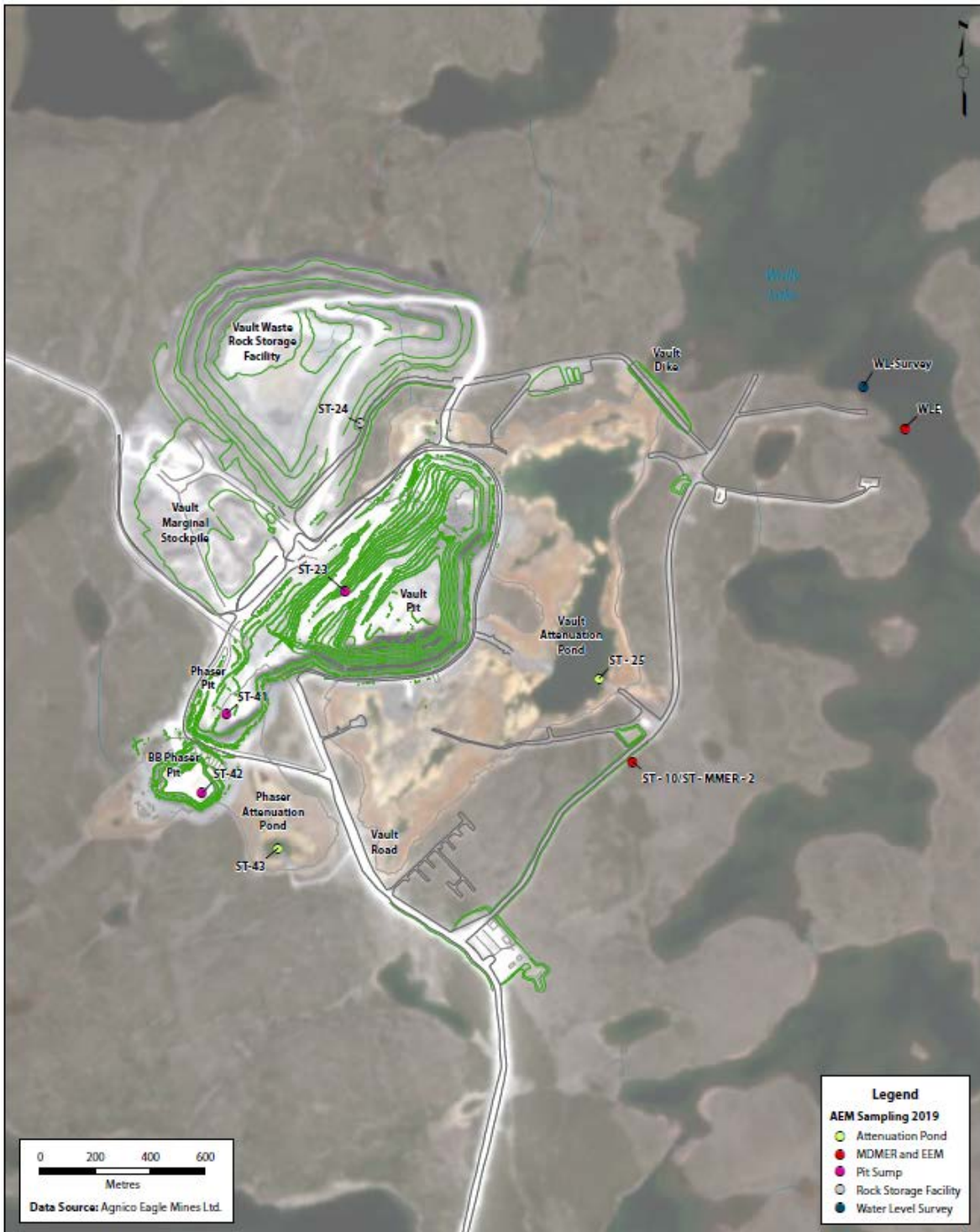
### **5.2.3 Water Quality and Flow Monitoring**

All water sampling conducted at the mine site and along the AWAR designed to monitor the performance of the waste and water management systems for the project fall into this category. In 2021, Agnico Eagle will continue to monitor the performance at the sewage treatment plant, in-pit tailings deposition, and reclaim tailings reclaim pond, Vault attenuation pond, pit sumps, seeps, bulk fuel storage facilities, freshwater usage volumes, water quality along the AWAR, and all other monitoring requirements stipulated in NWB Type A water license 2AM-MEA1530. See Figure 1 and Figure 2 for all the 2021 water monitoring stations at Meadowbank Mine Site and Vault.

Figure 1: Meadowbank Mine Site 2021 Sampling Locations



Figure 2 : Vault 2021 Sampling Locations



#### **5.2.4 Seepage Water from Waste Rock Storage Facility**

The KIA requested that Agnico continue monitoring until there is a 5 year period of non-detect cyanide results. To date (5 previous year - 2014-2018), the monitoring indicated that yearly average for CN levels does not exceed the CCME guideline, the MDMER or Water License limit for effluent discharge into the environment for NP2, NP1 and downstream lakes, Dogleg and Second Portage. Thus, based on the analysis of the previous result, Agnico Eagle suspended the current program in 2019 and only take sample in NP-2 and WRSF sump during open water season. In 2021, water quality monitoring sample will be taken in the WRSF seepage sump and receiving environment described above.

Agnico Eagle's work plan in 2021 will continue to closely follow the Freshet and Incident Action Plan which will include the active pumping and monitoring (location, quantity and quality) of the water from WEP1, WEP2 and ST-16 sump (which is pumped to the North Cell TSF). During the ice period, a weekly visual inspection will be done. Agnico Eagle will also continue to monitor the tailings and waste rock freeze back in accordance with Part I, Item 9 of the Type A Water License.

#### **5.2.5 Assay Road Seepage**

Monitoring and mitigation of the Assay Road Seepage will continue in 2021. All seepage water during the freshet and until the freeze up will be contained (as in the past) in the original sump and trench and pumped back to the mill. Currently the seepage area is frozen and weekly visual inspections are conducted. Based on shallow groundwater well monitoring downstream of the interception trench, all the water was contained and did not reach TPL. Agnico Eagle will also follow in 2021 the Freshet and Incident Action Plan which will include the active pumping of the water back to the mill, groundwater monitoring and continued sampling of Third Portage Lake.

#### **5.2.6 Central Dike Seepage**

Monitoring of the Central Dike seepage will continue in 2021. The seepage is located within the mining footprint, away from the receiving environment and is confined directly downstream of the dike. In 2021, Agnico Eagle will continue to collect water in ST-S-5 and pump it back into Goose Pit, Portage Pit A, or Portage Pit E. Monthly sampling will continue as per the requirements of the NWB Water License.

#### **5.2.7 Blast Monitoring**

Given the cessation of mining activities at Meadowbank, the blast monitoring program is not expected to be required. If blasts are needed, the monitoring program will be restarted. The program will monitor blasting peak particle velocity and overpressure in the receiving environment and ensure that Agnico Eagle uses the specific charge weight/delay/set back necessary to meet DFO requirements, and to ensure the stability of the dikes and mines site infrastructure.

### **5.3 GROUNDWATER MONITORING PROGRAM**

The groundwater monitoring will continue in 2021. As in the past, the groundwater monitoring program will be conducted in the summer and / or the fall. Sampling of the active wells will continue in 2021.

### **5.4 NOISE MONITORING PROGRAM**

The noise monitoring will continue in 2021 with sampling twice a year at the five monitoring locations established at the mine site.

### **5.5 AIR MONITORING PROGRAM**

Agnico Eagle has conducted annual dustfall and air quality monitoring around the Meadowbank site since 2011. Two (2) passive NO<sub>2</sub> samplers and four (4) dustfall collectors were installed on site in November 2011, with the first result received in December 2011. This air monitoring will continue on a monthly basis in 2021. Since 2013, Agnico Eagle also conducted dustfall monitoring along selected areas of the AWAR in response to NIRB, HTO and community concerns. This will continue in 2021.



## **SECTION 6 • LOGISTICS**

---

Fuel, bulk goods and construction materials will be transported to site overland via the All Weather Access Road. Charter flights carrying cargo and personnel will be routed directly to the mine site via the Meadowbank airstrip.