



**AGNICO EAGLE**

## **MELIADINE EXTENSION**

Final Environmental Impact Statement Addendum  
Plain Language Summary

Agnico Eagle is a Canadian mining company that has been investing in Nunavut for more than a decade. We operate the Meadowbank Complex and the Meliadine Mine in the Kivalliq region and the Hope Bay property in the Kitikmeot region. We contribute to the prosperity of communities, our employees, and their families through socially and environmentally responsible operations.



## Introduction

Meliadine Mine is a gold mine owned and operated by Agnico Eagle. It is located 25 kilometers north of Rankin Inlet, and 80 kilometers southwest of Chesterfield Inlet. Meliadine Mine brings significant economic and social benefits to the region, including employment, education, training, community programs and more.

Meliadine Mine was first approved in 2015 following a rigorous analysis of the mine's effects and benefits. Some updates to Meliadine Mine were approved in 2019 and 2022.

Agnico Eagle is seeking approval from the Nunavut Impact Review Board (NIRB) for the proposed Meliadine Extension. The Meliadine Extension includes a new windfarm that would help us reduce greenhouse gas emissions. As an option for the future, we are also seeking approval to store tailings in open pits that we no longer use so that we can limit our footprint.

The proposed Meliadine Extension would allow us to mine underground in areas where we had only planned and were approved to mine using open pits. The Meliadine Extension also includes improved access to an underground mine that was already approved. These changes would make the mine more efficient, allowing us to contribute more to the region for a longer time.

Finally, as an option, Agnico Eagle is seeking approval for an on-site airstrip. We do not plan to build the airstrip any time soon. However, we are

seeking approval for it now so that we can build it quickly if we need to in the future.

The Meliadine Extension would allow us to keep the mine open up to 11 extra years – until 2043. That means training, jobs, business partnerships, community programs, royalties and tax revenue would benefit the region well into the future.

It is important to note that the activities outlined in Meliadine Extension may not happen all at once.

### KEY PROJECT BENEFITS

- ✓ **205 new jobs during the busiest year of operations**
- ✓ **11 more years of economic benefits**
- ✓ **Reduced greenhouse gas emissions**
- ✓ **Smaller footprint impact of waste rock storage facilities**



## About the Final Environmental Impact Statement Addendum

When we first proposed the Meliadine Mine, we studied how it could affect Nunavut’s environment and communities – and how it could benefit the region. We also studied the best ways we could manage and reduce the mine’s impacts.

We summarized those studies in the Final Environmental Impact Statement (FEIS) which we submitted to NIRB in 2014. NIRB recommended that the Minister approve the Meliadine Mine, which the Minister did in 2015. Agnico Eagle made amendments to the FEIS in 2018 and 2020 for the discharge of treated water to Itivia Harbour. The amendments were approved by NIRB in 2019 and in 2022.

Agnico Eagle provided this FEIS Addendum to outline what the proposed Meliadine Extension includes and what its benefits and potential impacts are. It also outlines consultation with communities and how we plan to monitor and mitigate the project’s effects. The FEIS Addendum is intended to guide NIRB’s review of the proposed Meliadine Extension.

This document provides a summary of the FEIS Addendum.

**2014** **April:** Agnico Eagle submits FEIS to NIRB.

**2015** **February:** Minister issues Project Certificate No.006.

**2016** **May:** Minister approves Type A Water Licence 2AM-MEL1631, allowing construction and operation to begin.

**June:** Agnico Eagle submits first FEIS Addendum to change the way it transports and discharges saline effluent.

**2018**

## PROJECT TIMELINE

**2019 February:** Minister approves amendments in first FEIS Addendum.

**2020 August:** Agnico Eagle submits amendment to Water Licence to update total dissolved solids thresholds at Meliadine Lake, increase annual freshwater use, add access roads, and update the Waste Management Strategy and Closure and Reclamation Plan.

**August:** Agnico Eagle submits second FEIS Addendum to change the conveyance of saline effluent from trucks to a waterline for discharge to Itivia Harbour.

**2021 June:** Minister approves amendments to the Water Licence.

**2022 January:** January 31, 2022, Minister approves amendments to second FEIS Addendum on (i.e., waterline).

**2022 April:** Agnico Eagle submits third FEIS Addendum to add Meliadine Extension.

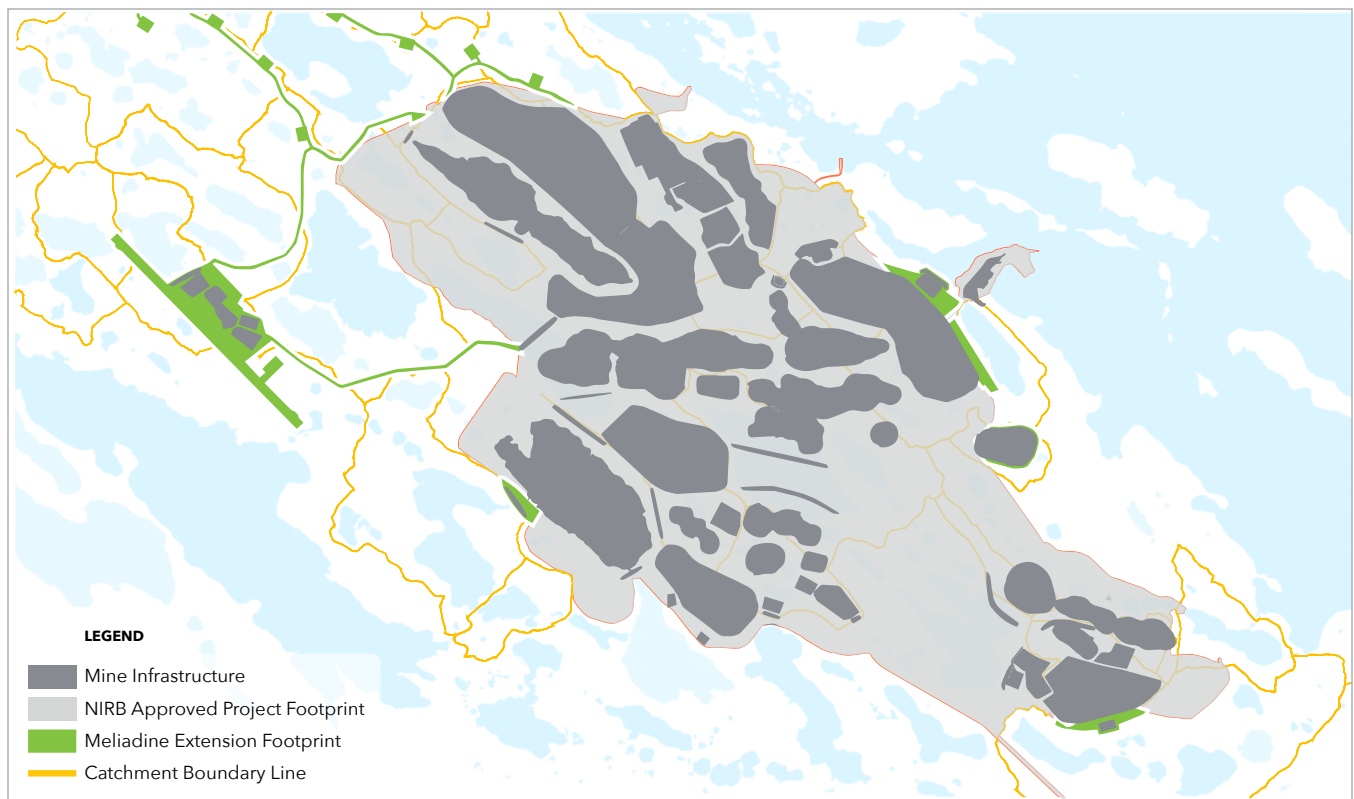
**WE ARE HERE**

## Optimizing the Review Process

The proposed Meliadine Extension is not a new project. In fact, most of the Meliadine Extension was already assessed in the 2014 FEIS and approved in 2015. The biggest changes we propose include the new windfarm and the extension of the mine’s life and economic benefits up to 11 years.

Overall, the mine site would be only slightly larger to account for the windfarm. The waste rock storage area would be half as large as previously approved. We have more than 40 monitoring and management plans, and we have updated all of them to account for the Meliadine Extension.

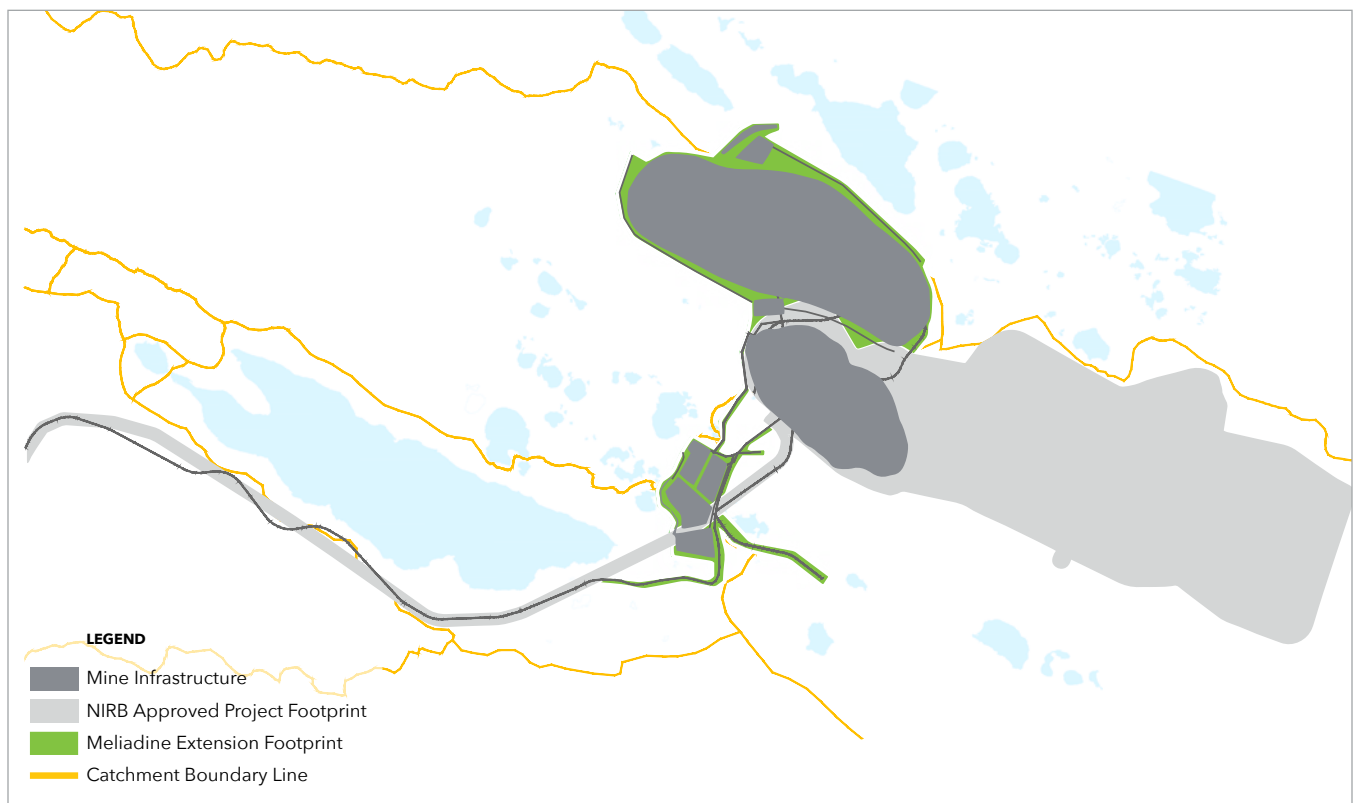
### PROPOSED MELIADINE EXTENSION - MINE SITE



When the Meliadine Mine was first approved, NIRB set out terms and conditions that we had to follow to go forward. Those terms and conditions/rules are included in the Project Certificate. We do not expect the proposed Meliadine Extension to trigger any changes to those terms and

conditions, as the set of rules are robust enough for the Meliadine Extension. Also, we know that the Meliadine Extension will have to go through a rigorous assessment by the Nunavut Water Board when we apply to update our water licence

### PROPOSED MELIADINE EXTENSION - DISCOVERY DEPOSIT



## Our Commitment to Consultation

Agnico Eagle has been consulting with communities in Nunavut for over a decade. We believe that consultation is key to building mutually beneficial, cooperative and productive relationships.

Our approach is aligned with Inuit Quajimajatuqangit (IQ) principles, and we have two, full-time Traditional Knowledge (TK) and IQ advisors to support and validate our methodology. We also have a Kivalliq Elders Advisory Committee to help us integrate IQ into our planning and operations.

While we focused our consultation efforts on Rankin Inlet, we also consulted with communities all across the Kivalliq region. The sections below discuss consultation activities that deal with the Meliadine Extension, specifically.

### INNOVATING TO KEEP EVERYONE SAFE

COVID-19 and public health guidelines meant that Agnico Eagle had to create innovative ways to consult with the community. One of the ways we met this challenge was through the Virtual Meeting Room, or VMR.

The VMR allows us to communicate with the community, get feedback and provide updates on the Meliadine Extension. The VMR is in Inuktitut and English and features videos, interactive maps, infographics and text. The VMR is available online at [meliadinevmr.agnicoeagle.com/listening-to-communities](https://meliadinevmr.agnicoeagle.com/listening-to-communities).

Before we officially released the VMR, we updated its design based on feedback we received through consultation with focus groups.

Agnico Eagle conducted a social media and radio campaign to raise awareness for the VMR before it was launched on June 28, 2021.

Agnico Eagle also installed a tent at kilometer 15 of Meliadine Road during the summer of 2021. The tent allowed us to host public meetings, focus groups and meetings with stakeholders in a safe way that respects public health guidelines. Agnico Eagle continues to host working meetings when public health restrictions allow.

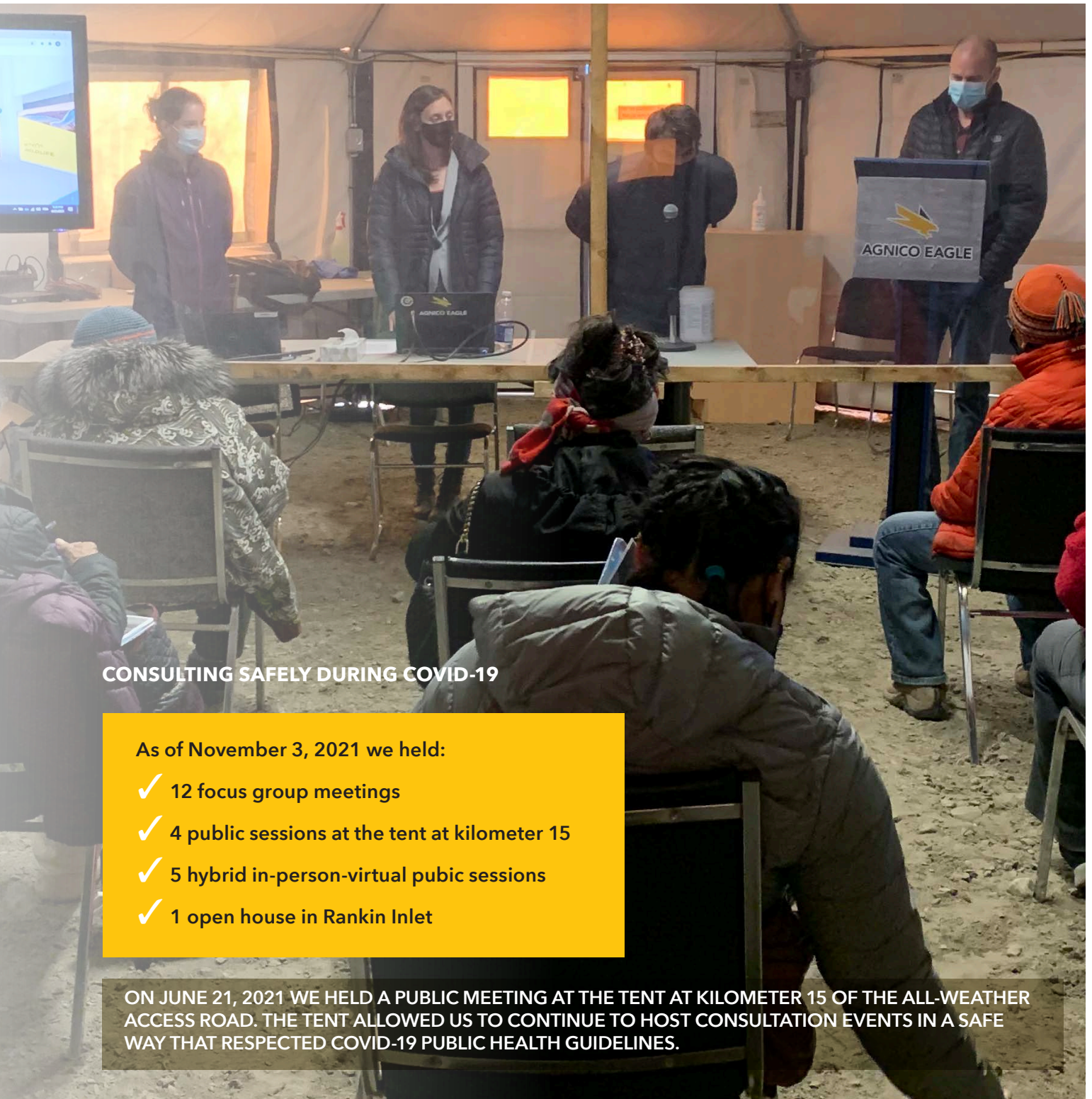
### ANNUAL CONSULTATION

In addition to the consultation mentioned above, we have annual, focused consultations with socio-economic development committees, hunters and trappers associations, local governments, police, the fire department, and the Inuit Impact and Benefit Agreement Committees.

Also, throughout the year, our Community Liaison Officers are involved in consultations and focus group activities and hamlet meetings with community groups and members. They also support Family Day events and the Christmas Feast.

Below we summarize some of the feedback we heard from the community, along with the steps we took to respond to that feedback.





**CONSULTING SAFELY DURING COVID-19**

As of November 3, 2021 we held:

- ✓ 12 focus group meetings
- ✓ 4 public sessions at the tent at kilometer 15
- ✓ 5 hybrid in-person-virtual public sessions
- ✓ 1 open house in Rankin Inlet

**ON JUNE 21, 2021 WE HELD A PUBLIC MEETING AT THE TENT AT KILOMETER 15 OF THE ALL-WEATHER ACCESS ROAD. THE TENT ALLOWED US TO CONTINUE TO HOST CONSULTATION EVENTS IN A SAFE WAY THAT RESPECTED COVID-19 PUBLIC HEALTH GUIDELINES.**

## Consultation Highlights

WHAT WE HEARD	HOW WE RESPONDED
<p>Community members shared concerns that traditional place names were not being used in our maps and graphics.</p>	<ul style="list-style-type: none"> <li>&gt; We adopted traditional place names into our materials. We also use the Kivalliq Elders Advisory Committee to help with the local names.</li> </ul>
<p>We heard that respect for the environment is a fundamental value for community members.</p>	<ul style="list-style-type: none"> <li>&gt; We designed the Meliadine Extension to be almost entirely within the same footprint as the approved Meliadine Mine.</li> </ul>
<p>In Coral Harbour, we heard concerns around the potential impacts of shipping activities on mammals and traditional land use.</p>	<ul style="list-style-type: none"> <li>&gt; An additional shipping corridor has since been added south of Coats Island.</li> </ul>
<p>Elders shared their concerns that opportunities for education, training and employment in the region are limited.</p>	<ul style="list-style-type: none"> <li>&gt; The Meliadine Extension would provide 205 new jobs and extend employment opportunities by 11 years.</li> </ul>
<p>We heard concerns that fish moved from one lake to another might not survive in their new environment. We also heard that Itirlak is an important fishing location.</p>	<ul style="list-style-type: none"> <li>&gt; Our fish out design makes sure fish would only be moved into similar lakes so that fish can thrive in their new environments. Also, the Meliadine Extension would not impact Itirlak.</li> </ul>
<p>We heard concerns from the community that caribou might be disrupted when helicopters and planes are nearby.</p>	<ul style="list-style-type: none"> <li>&gt; We would continue to follow our Terrestrial Environment Management and Monitoring Plan which includes several measures to reduce potential impacts on caribou.</li> </ul>
<p>We heard concerns about dust along the All-Weather Access Road (Meliadine Road) and how it might impact berry picking.</p>	<ul style="list-style-type: none"> <li>&gt; We put in place mitigation measures such as speed limits and dust suppressants. Also, we would continue to comply with the Dust Management Plan and the Air Quality Monitoring Plan.</li> </ul>



AN AGNICO EAGLE TECHNICIAN PLACES A COLLECTION JAR ON A DUST COLLECTION STAND. AGNICO EAGLE MUST COMPLY WITH THE DUST MANAGEMENT PLAN AND AIR QUALITY MANAGEMENT PLAN. THESE PLANS REDUCE DUST CAUSED BY MINING ACTIVITIES.

## The Meliadine Extension: What's New?

### SUSTAINABLE, GREEN POWER

The proposed Meliadine Extension includes a windfarm to provide power to the mine. The windfarm would include up to 11 turbines and would help us reduce diesel use and greenhouse gas emissions. The wind turbines would be built as needed, and not all at once. The windfarm would:

- Provide sustainable energy to the mine;
- Reduce greenhouse gas emissions and diesel use;
- Have no effect on caribou migration;
- Reduce the risk of moving, handling and using fuel;
- Provide partnership opportunities for local businesses during construction; and
- Improve project economics so that we can invest in the region for longer.

We chose the windfarm's location because it has clear exposure to winds from the north-west. We also considered archaeological sites, cabins, wildlife, vegetation, and access for construction. Finally, we wanted to keep the windfarm close to other mine infrastructure.

There are other windfarms at northern mines. For example, Hope Bay Mine in Nunavut, the Diavik Diamond Mine in the Northwest Territories and the Raglan Mine in northern Quebec all use wind power.

We have a Windfarm Management Plan to make sure any effects of the windfarm on noise or birds are monitored and mitigated.

### BETTER ACCESS AND ECONOMICS

The proposed Meliadine Extension includes a new portal to Tiriganiaq-Wolf underground mine area, which was already approved as part of the overall Meliadine Mine. The Meliadine Extension also includes other infrastructure to support the portal. These changes would increase the life of the mine.

### FUTURE PLANS TO REDUCE FRESHWATER USE AND RESTRICT THE SITE FOOTPRINT

As an option for the future, Agnico Eagle proposes to use less freshwater and restrict the overall site footprint by storing tailings and waste rock in exhausted pits. Exhausted pits are open pit mines that we no longer use.



**270kt**

**ESTIMATED TOTAL  
GHG EMISSIONS FROM  
WIND TURBINES**

Right now, Agnico Eagle removes water from tailings and stores the dry tailings at a tailings storage facility. We store waste rock at a waste rock storage facility. Storing tailings and waste rock in exhausted pits would:

- Reduce freshwater use;
- Re-use spaces instead of impacting new ones;
- Cut the size of the waste rock storage facility in half; and

- Improve project economics so that we can invest in the region for longer.

Agnico Eagle is approved for in-pit storage at the Meadowbank Mine and has proven success with this method. Management plans would be in place to make sure any effects of storing tailings and waste rock in exhausted pits are monitored and mitigated.

## WIND TURBINE LOCATIONS



## PLANNING AHEAD FOR BETTER CONNECTIONS

Agnico Eagle plans to invest in the Kivalliq region for many years to come. We currently rely on Rankin Inlet Airport to transport people and supplies in and out of the region, and for now, this works well. However, the need might arise for an airstrip at Meliadine Mine in the future. While we do not plan to build the on-site airstrip any time soon, we are seeking approval for it now so that we can build it quickly if we need to. If we build it, the on-site airstrip would:

- Reduce traffic and dust along Meliadine Road;
- Reduce transportation time for employees;
- Reduce flight cancellations;
- Increase flexibility during bad weather;

- Increase flexibility during caribou migration; and
- Provide partnership opportunities for local businesses during construction and operations.

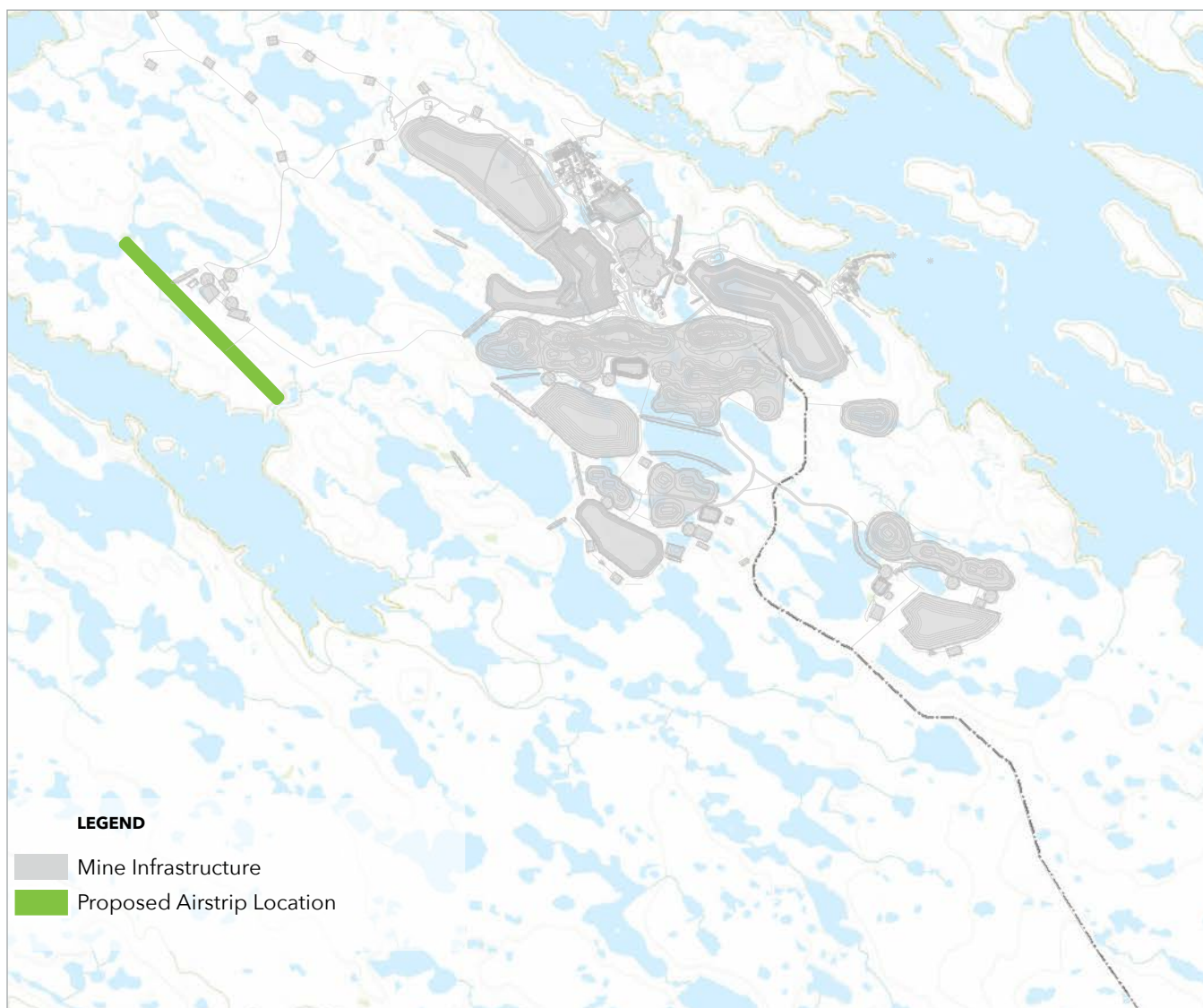
Agnico Eagle considered seven locations for the on-site airstrip. We chose the proposed location because we wanted to reduce the impact on waterbodies and be mindful of wildlife habitat. Also, an airstrip at the proposed location would contribute the least overall noise because it is closest to the rest of the site where noise already occurs. Finally, the proposed location would use infrastructure needed for the Tiriganiaq-Wolf mining area thereby reducing the footprint.

WE CHOSE THE LOCATION OF THE PROPOSED ON-SITE AIRSTRIP WITH CARIBOU HEALTH IN MIND. BASED ON CARIBOU COLLAR DATA, WE CONFIRMED THAT THE PROPOSED LOCATION IS THE LEAST USED BY CARIBOU COMPARED TO THE OTHER LOCATIONS WE CONSIDERED.



Agnico Eagle developed an Airstrip Management Plan to make sure any effects of the on-site airstrip are mitigated.

### PROPOSED ON-SITE AIRSTRIP LOCATION



## The Meliadine Extension: What Hasn't Changed?

### SAFE WATER MANAGEMENT

Agnico Eagle knows the value and importance of water quality to the community of Rankin Inlet. We know that water quality at Meliadine Lake is particularly important to the community.

Our approved strategy for managing water will not change. Surface contact water and saline water from the underground mines would be separated.

Agnico Eagle would continue to monitor the health of Meliadine Lake through its Aquatic Effects Monitoring Program. This program looks at whether activities at the mine are causing changes to things like water quality, plankton and fish. Meliadine Lake continues to be healthy, and this is not expected to change due to the Meliadine Extension.

In addition, we have committed to minimizing or eliminating surface contact water discharges to Meliadine Lake by using the waterline to Itivia Harbour. Water quality will continue to meet discharge criteria before it goes back to the environment.

Agnico Eagle has several plans in place to manage and monitor potential effects on water, including the Water Management Plan, Adaptive Management Plan, Groundwater Management Plan, Aquatic Effects Monitoring Program, and Ocean Discharge Monitoring Plan.

### CARIBOU PROTECTION AND MONITORING

Agnico Eagle understands the value and importance of caribou to the people of Rankin Inlet, and to Nunavut as a whole. Our approved strategy for monitoring and mitigating potential impacts on caribou will not change. We will continue to follow the Terrestrial Environment Management and Monitoring Plan.

We have committed to taking a regional approach to caribou protection. The Terrestrial Advisory Group (TAG) will integrate IQ with scientific data and complement our monitoring and mitigation activities.

### OTHER COMPONENTS UNCHANGED

As noted above, most of the proposed Meliadine Extension was already approved under the 2014 FEIS and two addendums. The Meliadine Extension means no change to the:

- extraction methods;
- amount of water we can use;
- water treatment methods;
- power plant, maintenance, warehouse, or laydown activities;
- fuel limits or the way we store fuel;
- ways we handle hazardous waste and incinerate;
- Meliadine Road and bypass road; or
- shipping practices.





## Benefits of the Meliadine Extension

The proposed Meliadine Extension means significant, ongoing investments in people and businesses in the region.

During consultations, elders in the community told us they were worried about unemployment among young people, especially given Kivalliq’s young population. The Meliadine Extension would create 205 new jobs (at the busiest year of operations) on top of the jobs already created by the Meliadine Mine. It would provide more training opportunities. The Meliadine Extension means employment incomes would last up to an additional 11 years to 2043. This in turn means better access to food, recreation, education and resources for traditional activities.

The Meliadine Extension would also create new opportunities for partnerships with local

businesses. For example, Agnico Eagle expects to partner with local contractors for the construction of the windfarm and the potential on-site airstrip.

The Meliadine Extension would mean ongoing support for community programs, training opportunities, and educational initiatives. It also means extending community benefits delivered through the Nunavut Agreement and the Inuit Impact and Benefit Agreement. The Meliadine Extension means more direct taxes paid to the hamlet and to the territorial and federal governments.

AGNICO EAGLE IS PROUD TO CONTRIBUTE TO OUR COMMUNITY. IN MAY 2021, AGNICO EAGLE DONATED A SAFETY CABIN TO THE KANGIQLINIQ HUNTERS AND TRAPPERS ASSOCIATION. THE SAFETY CABIN WILL SUPPORT THE YOUNG HUNTERS PROGRAM AND PROVIDE SHELTER TO HUNTERS WHO NEED IT IF THEY GET STUCK IN BLIZZARD CONDITIONS.





AGNICO EAGLE CONTRIBUTED \$250,000 TOWARD THE CONSTRUCTION OF RANKIN INLET FIRE DEPARTMENT'S NEW REGIONAL FIRE TRAINING CENTRE. THE CENTRE ALLOWS FIREFIGHTERS TO TRAIN IN PRACTICAL, REAL-TIME FIRE AND RESCUE SITUATIONS. THIS MAKES FIREFIGHTERS BETTER EQUIPPED AND HELPS KEEP THE COMMUNITY SAFE.



AGNICO EAGLE RECOGNIZES THAT ELDERS HAVE UNIQUE AND VALUABLE INSIGHT INTO THEIR COMMUNITIES. THIS PHOTO CAPTURES ONE OF MANY MEETINGS IN WHICH ELDERS SHARED THEIR KNOWLEDGE AND PERSPECTIVES WITH AGNICO EAGLE'S TEAM.

## Monitoring and Management

Agnico Eagle continues to collect data to make sure we fully understand any potential impacts of the Meliadine Mine.

We collected data on the physical environment, including terrain and soils, permafrost, geochemistry, noise, surface water quantity and quality, and marine water quality. We also collected data on the biological environment, including vegetation, terrestrial wildlife, birds and bird habitat, fish and other aquatic organisms, and marine wildlife. Finally, we collected data on the socio-economic environment, including IQ, archaeology, and socio-economics.

Based on that data, we have developed 40 plans to monitor and report on our environmental performance. We would take corrective action if any unusual or unforeseen environmental impacts occur.

Based on that data, we found that with mitigation, the proposed Meliadine Extension would not cause long-term significant negative effects.

Agnico Eagle must follow the terms and conditions/rules outlined in the Project Certificate.



## Conclusions

Agnico Eagle completed studies to determine if the Meliadine Extension could have any negative impacts on air quality, noise, the terrestrial environment (including caribou), the freshwater environment, the marine environment, socio-economics, and human and ecological health. The studies were based on scientific data, expert opinion, IQ, and information shared by the community.

Overall, the Meliadine Extension represents a very little change from the 2014 FEIS and approved Meliadine Mine activities. Long lasting impacts are not anticipated, aside from socio-economic benefits (like training, jobs, business partnerships and tax revenue) as well as reduced greenhouse gas emissions. There are no significant cumulative effects on wildlife (including caribou), birds, or the marine environment.

---

To learn more about the Meliadine Extension, receive updates or provide your feedback, please visit our Virtual Meeting Room at [meliadinevmr.agnicoeagle.com/listening-to-communities](https://meliadinevmr.agnicoeagle.com/listening-to-communities).





**AGNICO EAGLE**