

Figure 1: Annual 98th Percentile of Daily 1-hour Maximum NO_2 (3-Year Average) Predicted Concentrations, Scenario 1, No Wind Farm (2008-2010 Meteorological Data)

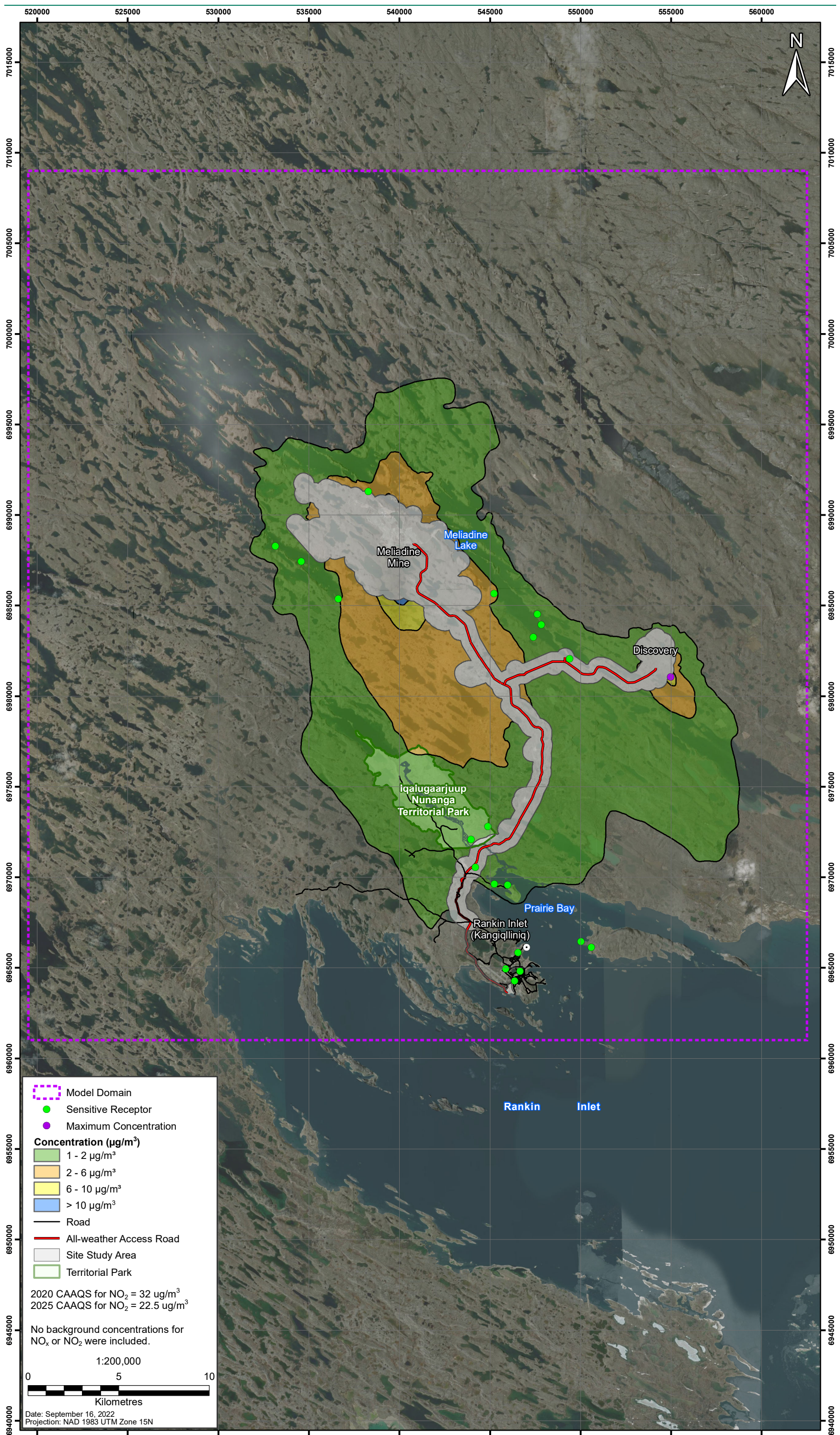


Figure 2: Average Annual NO_2 Predicted Concentrations, Scenario 1, No Wind Farm (2007 Meteorological Data)

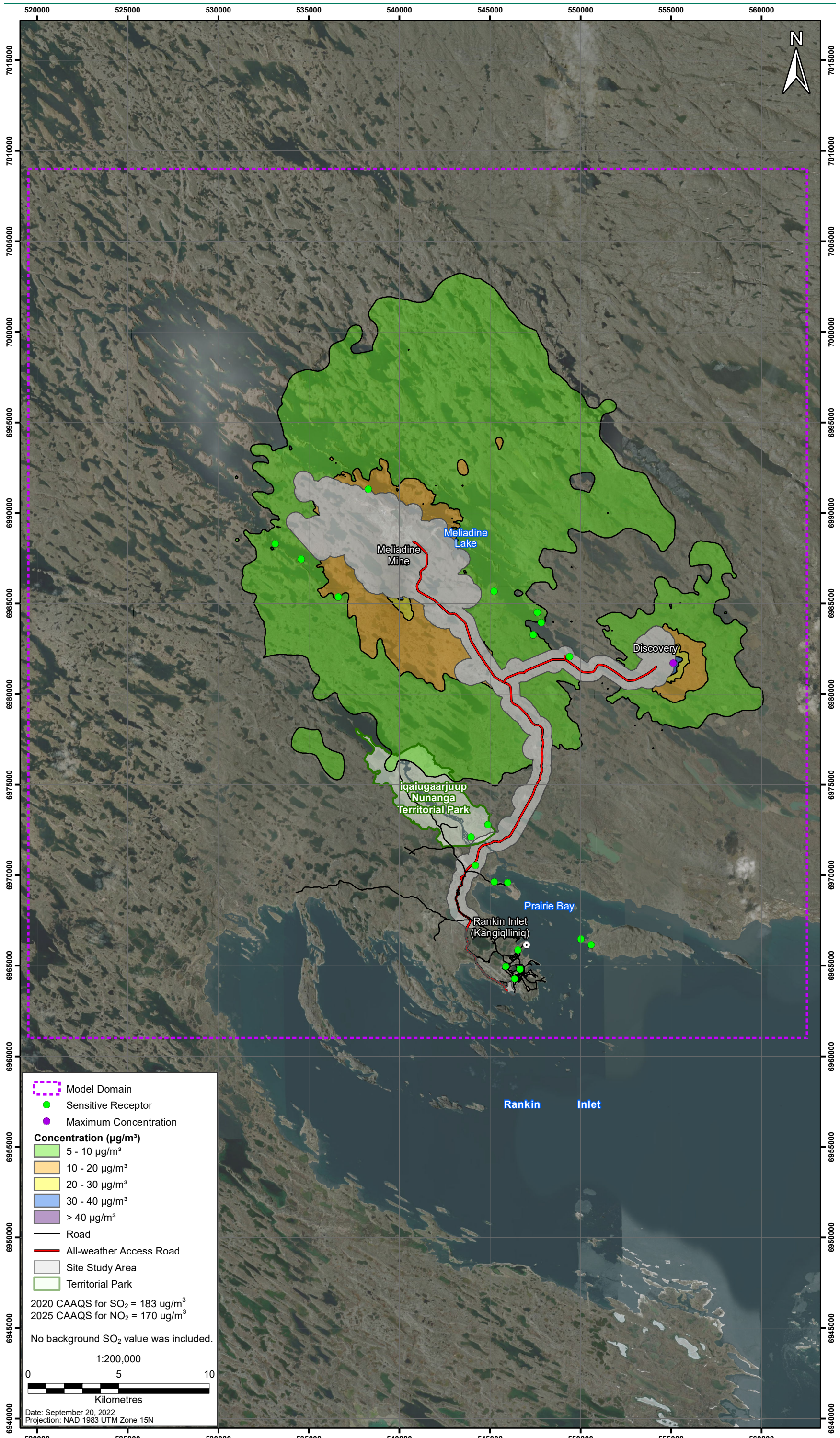


Figure 3: Annual 99th Percentile of Daily 1-hour Maximum SO_2 (3-Year Average) Predicted Concentrations, Scenario 1, No Wind Farm (2006-2008 Meteorological Data)

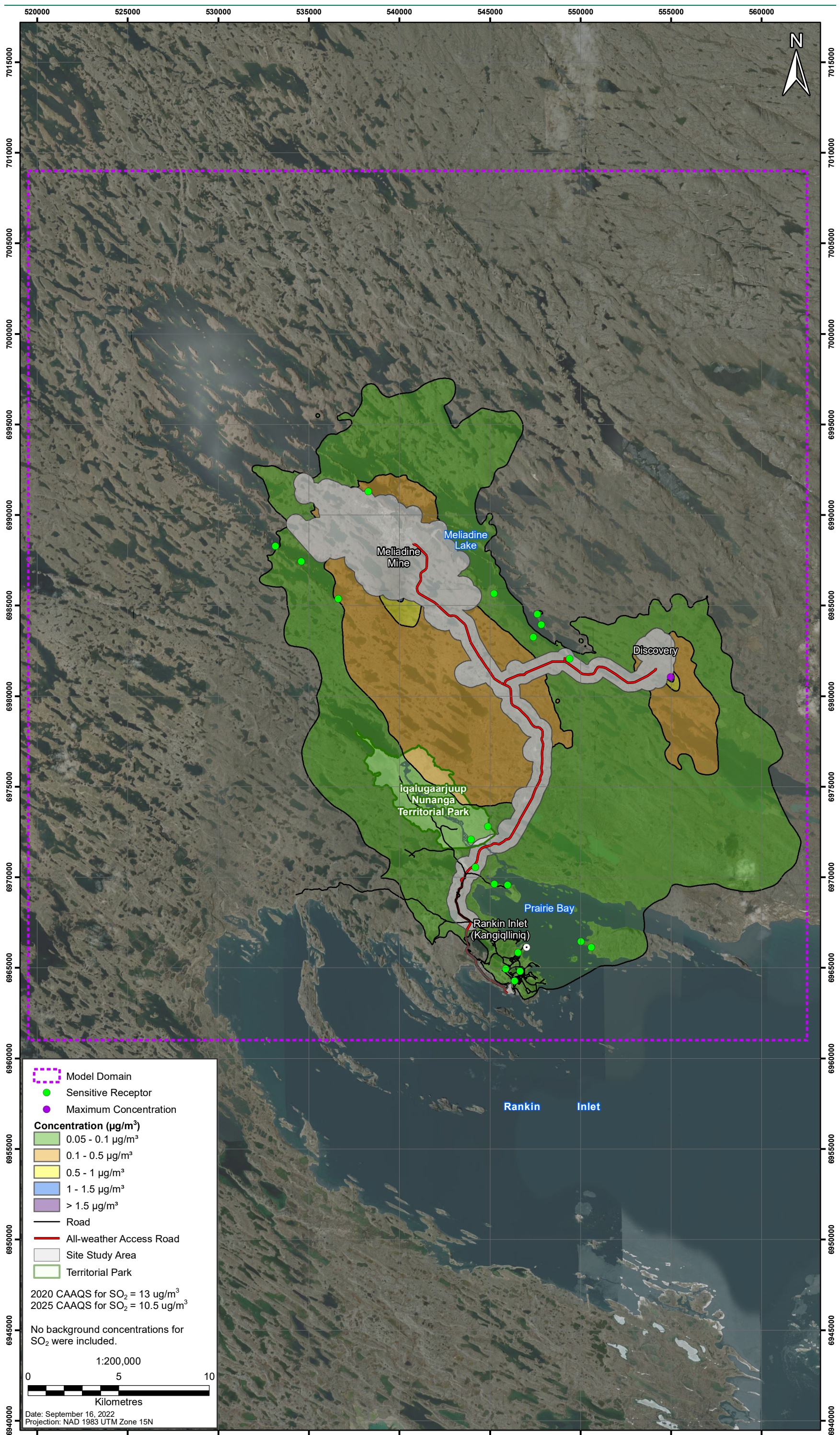


Figure 4: Average Annual SO₂ Predicted Concentrations, Scenario 1, No Wind Farm (2007 Meteorological Data)

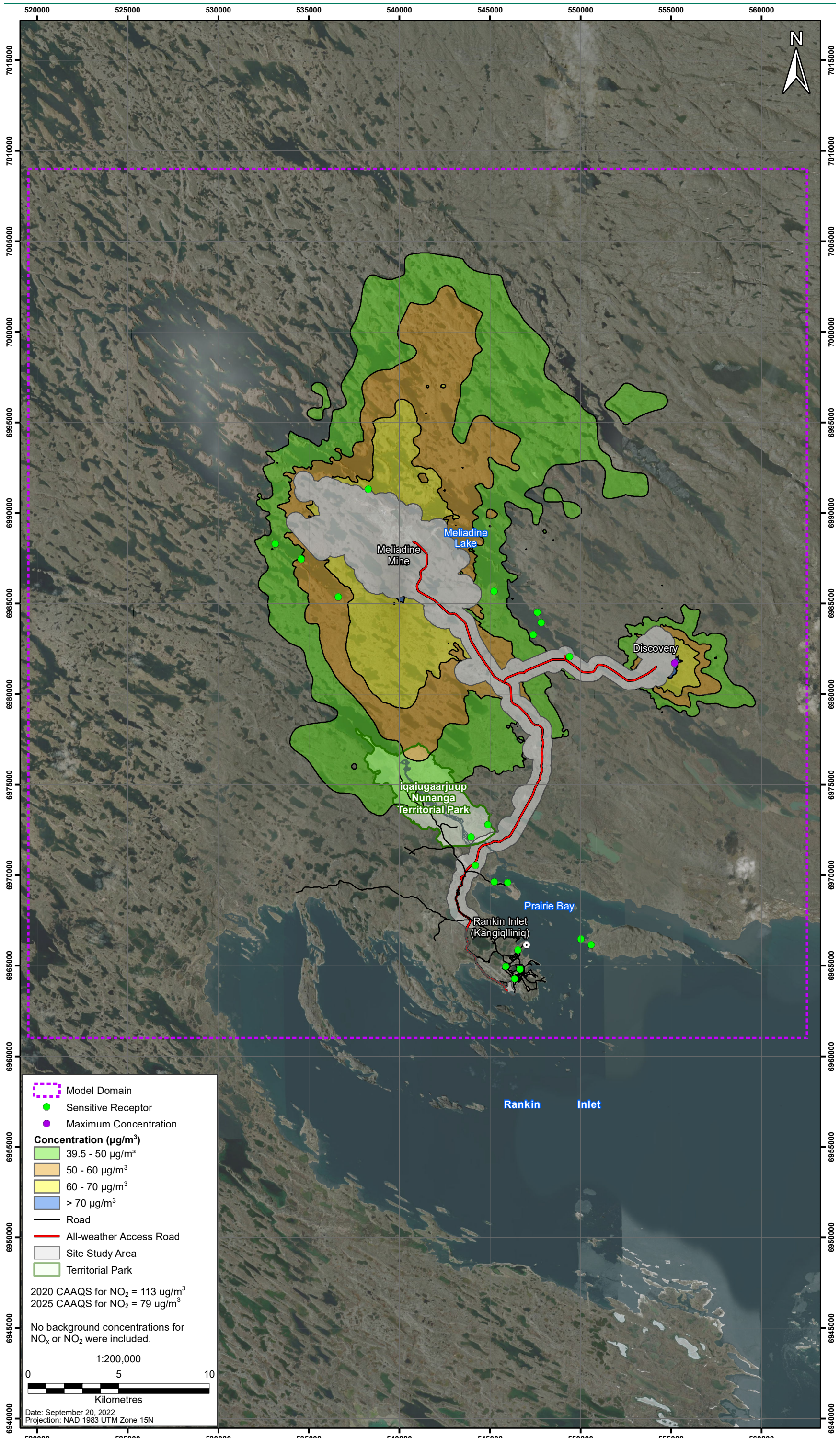


Figure 5: Annual 98th Percentile of Daily 1-hour Maximum NO_2 (3-Year Average) Predicted Concentrations, Scenario 2, Wind Farm 50% (2006-2008 Meteorological Data)

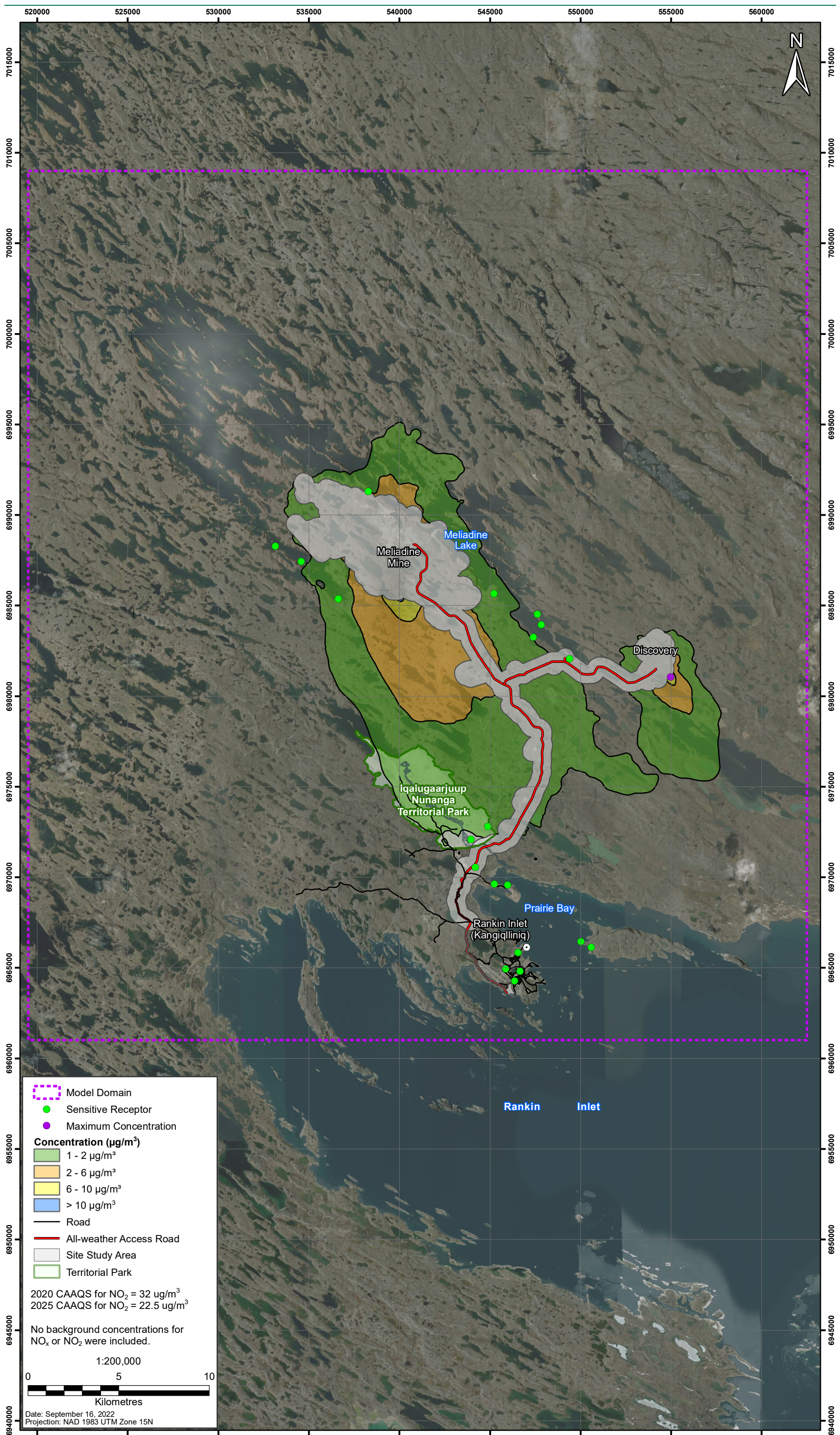


Figure 6: Average Annual NO_2 Predicted Concentrations, Scenario 2, Wind Farm 50% (2007 Meteorological Data)

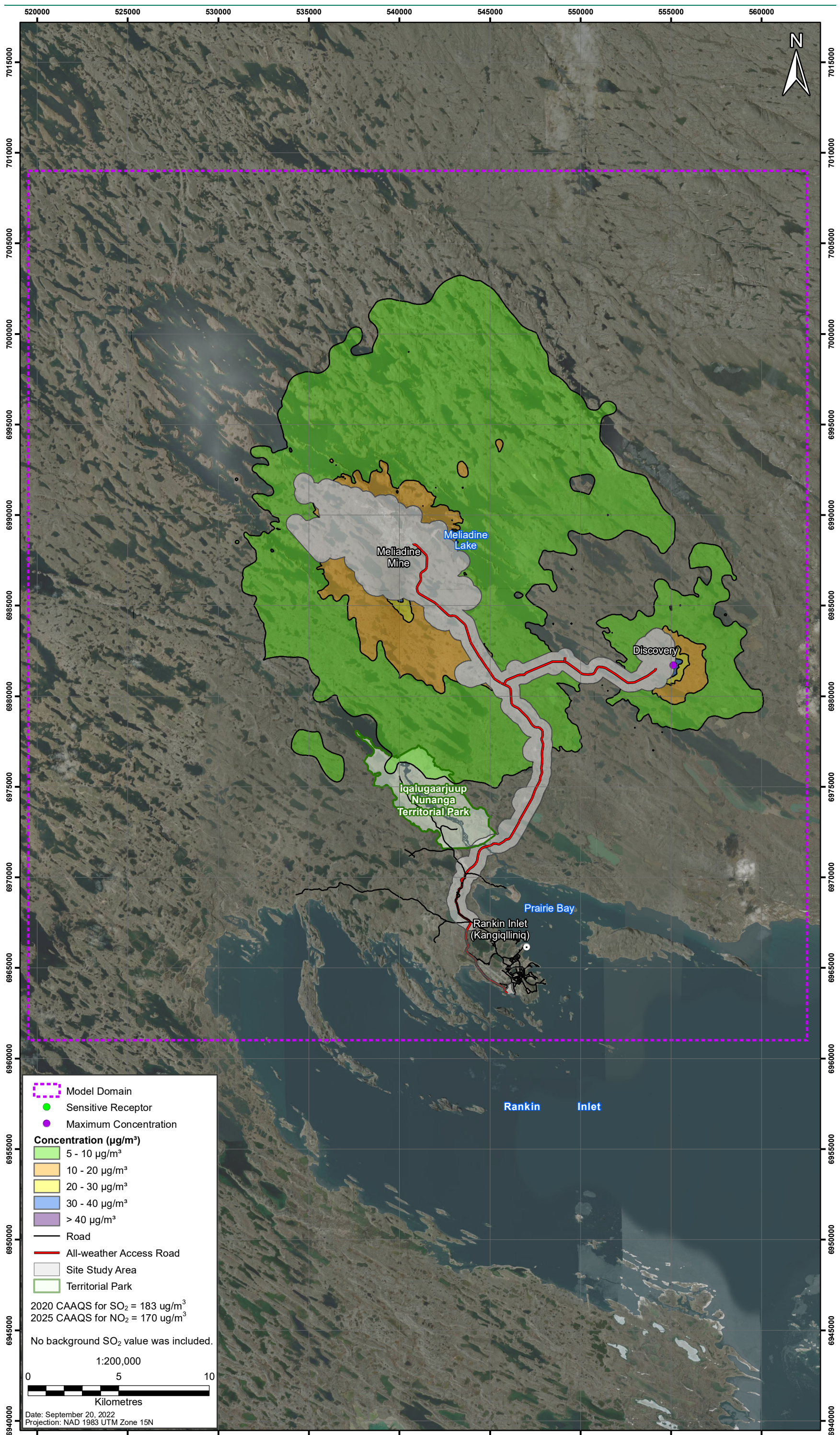


Figure 7: Annual 99th Percentile of Daily 1-hour Maximum SO_2 (3-Year Average) Predicted Concentrations, Scenario 2, Wind Farm 50% (2006-2008 Meteorological Data)

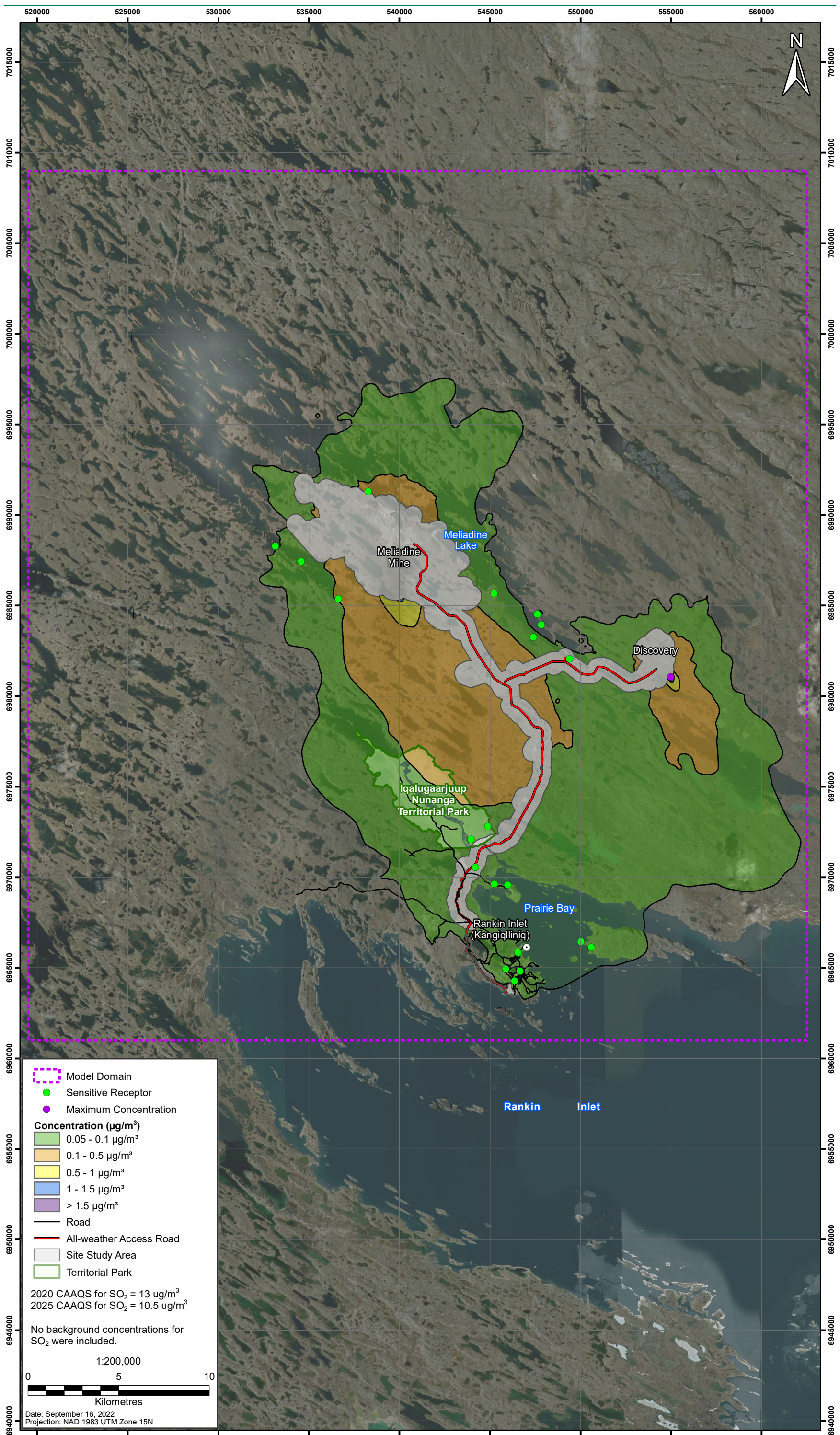


Figure 8: Average Annual SO₂ Predicted Concentrations, Scenario 2, Wind Farm 50% (2007 Meteorological Data)

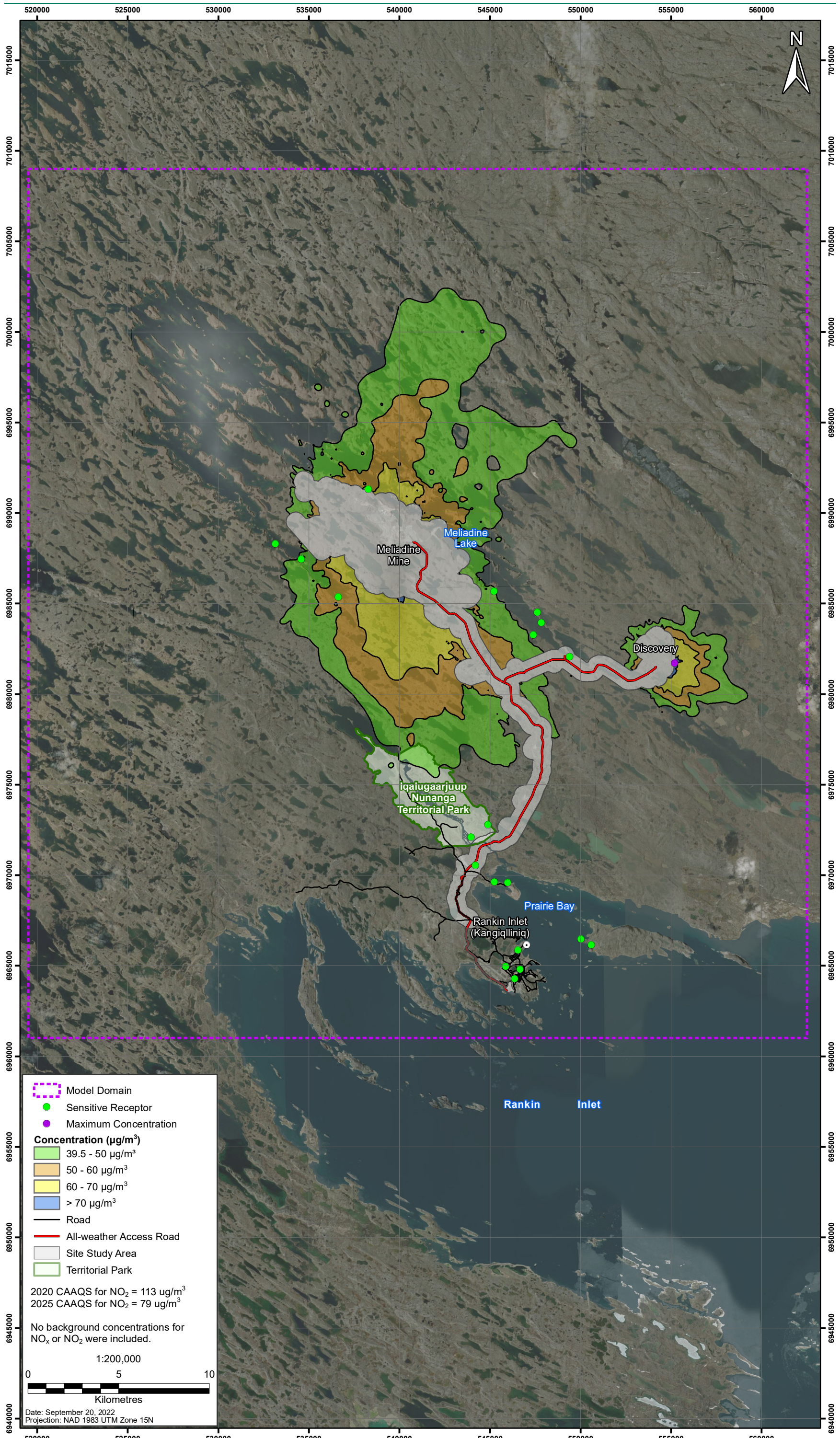


Figure 9: Annual 98th Percentile of Daily 1-hour Maximum NO_2 (3-Year Average) Predicted Concentrations, Scenario 3, Wind Farm 75% (2006-2008 Meteorological Data)

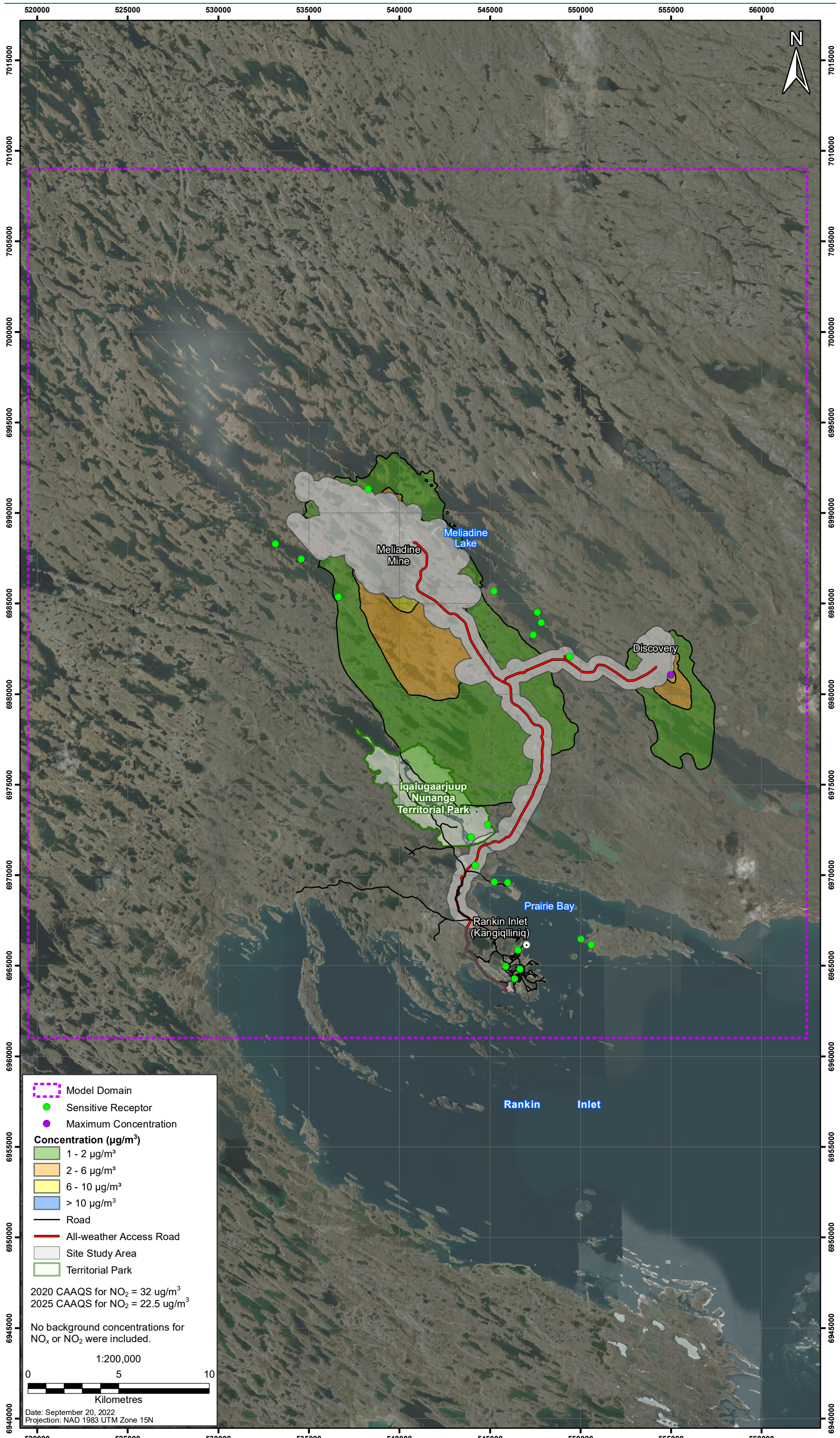


Figure 10: Average Annual NO₂ Predicted Concentrations, Scenario 3, Wind Farm 75% (2007 Meteorological Data)

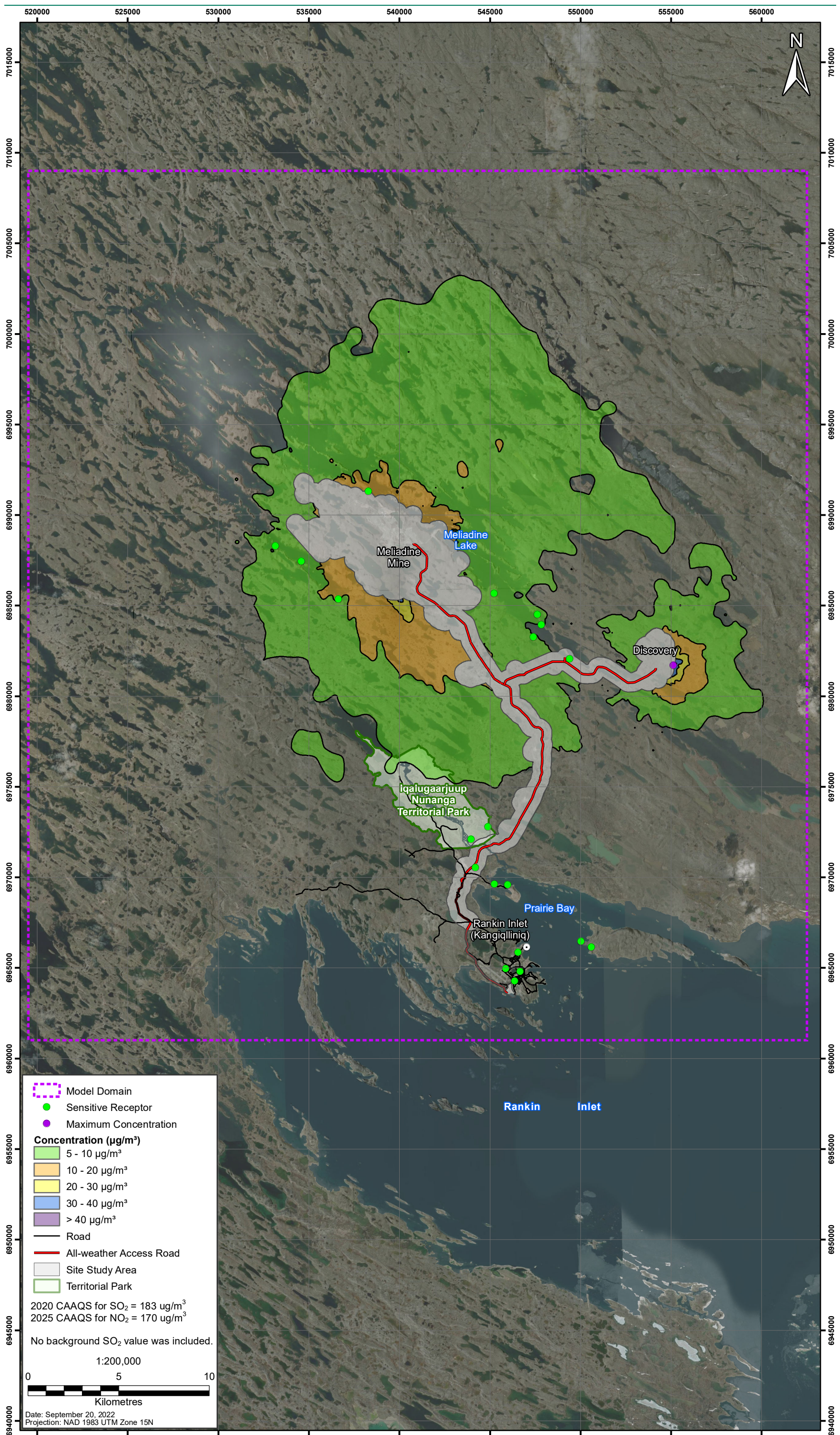


Figure 11: Annual 99th Percentile of Daily 1-hour Maximum SO_2 (3-Year Average) Predicted Concentrations, Scenario 3, Wind Farm 75% (2006-2008 Meteorological Data)

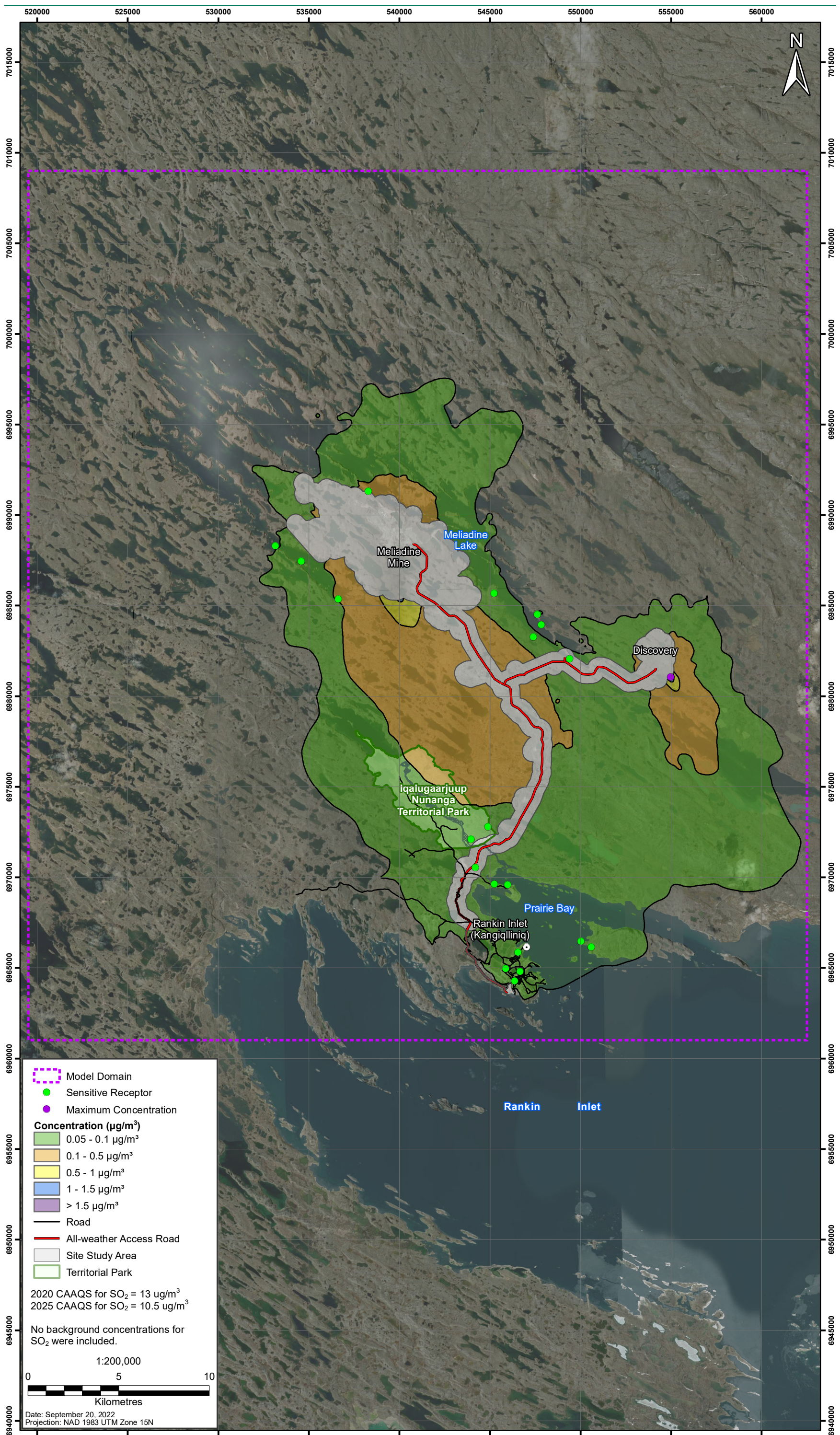


Figure 12: Average Annual SO₂ Predicted Concentrations, Scenario 3, Wind Farm 75% (2007 Meteorological Data)