


Appendix 26: 2022 Toolbox Presentations

Table 1. 2022 Toolbox Presentation Counts

Toolbox Topic	Presentation Total
Caribou Migration	50
Fox Talk	47
Spill Reporting Mitigation	15
Waste Management	44

A photograph of a herd of caribou in a snowy, open landscape under a clear blue sky. The caribou are in various poses, some standing and some resting on a snow-covered ridge. The scene is brightly lit, suggesting a sunny day.

MELIADINE CARIBOU MIGRATION PROTOCOL



AGNICO EAGLE

CARIBOU MIGRATION BASICS

Qamanirjuaq Caribou herd ~ 288 000 individuals

- Yearly migration occurs at Meliadine between end of June to mid-July
- Patterns, duration and numbers vary over the years
- Caribou could be travelling in groups of 1000 to +5000
- Caribou can cross Mine site area and remain for a period of 3 to 10 days.
- Agnico Eagle must take all possible measures to avoid disturbance to the caribou.
- During migration, caribou herd will be defined as ≥ 50 individuals for caribou management purposes.



CARIBOU MIGRATION BASICS

During Caribou Migration, Agnico Eagle will:

- Report any caribou sightings.
- Prevent human activities that could disturb the herd.
- Give caribou the “right-of-way”.
- Not blocked or deterred Caribou from moving through Mine site or AWAR.

Decision trees for work and traffic suspension protocols have been developed to manage:

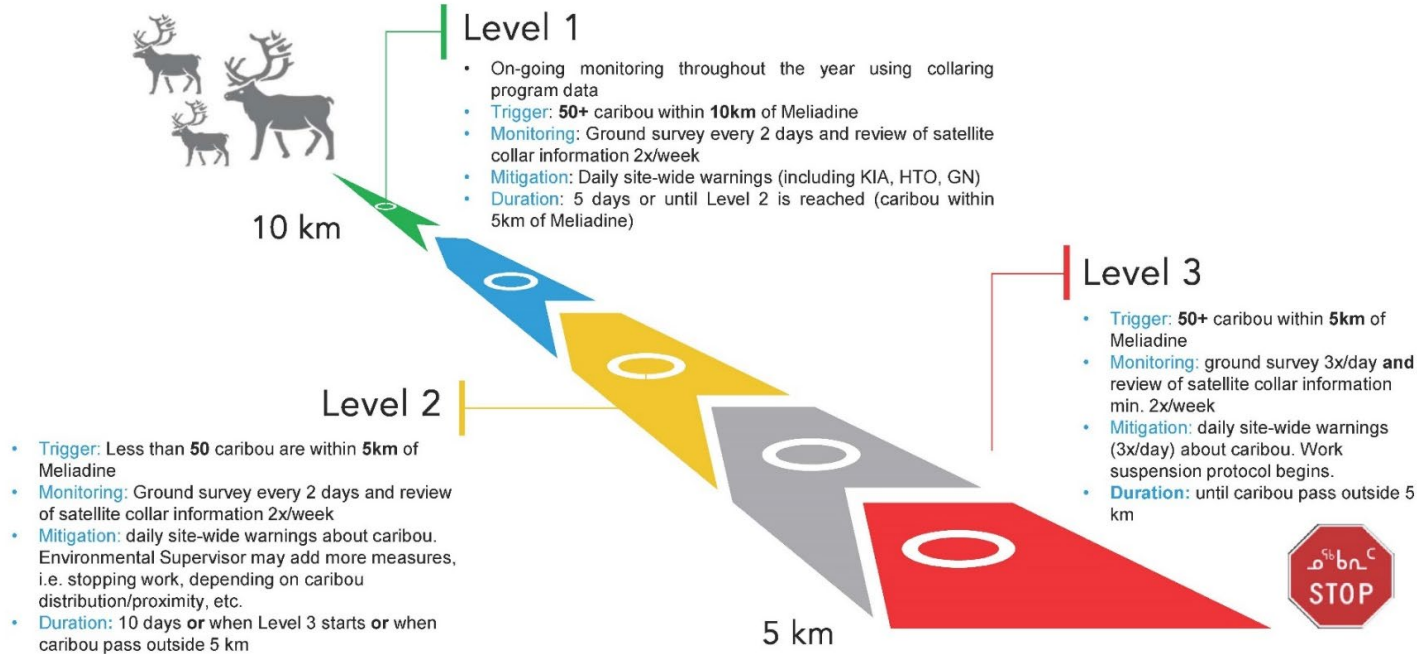
- Monitoring;
- Mitigation measures; and
- Activities during the migration.

Work and traffic suspension depends on:

- Number of Caribou and;
- Proximity of Caribou to Meliadine and AWAR.



CARIBOU MIGRATION BASICS



MELIADINE SITE WORK SUSPENSION PROTOCOL



FOR LEVEL 3: In accordance with the IIBA/TEMMP, all off-site and on site-related activities must be stopped once the herd is within 5 km radius of the Meliadine Site. The related activities include:

- Helicopter flights and drill operations off site* (*when herd is within 5 km of their locations*).
- Surface mining/operations activities such as blasting, transportation to mining areas, hauling of material, and non-essential refueling of equipment. Non-essential light vehicle traffic will be suspended.
- Surface activities related to underground mining such as surface stockpiling of ore or waste with heavy equipment.
- Surface construction activities: outdoor construction development, earthworks, road construction, structural work, non-essential waste deposition, refueling, transportation of equipment.
- Water management activities, such as unauthorized pumping, piping installation and outdoor unapproved maintenance of water management facilities.
- Outdoor unapproved camp activities.
- Use of evaporators.
- Use of propane deterrent cannons
- **Only essential light vehicle traffic (for crew changes and Env. wildlife survey) will be authorized.**

* - *Inform all employees at the drill sites that are in the direction of the caribou during migration, and within 5 km radius of the migration, that they will need to shut down the operations such that the drills and associated helicopter flights can cease as quickly as possible.*

- *Shutdown will include removal of drill rods from the holes and securing of the drill station.*

- *Organize transport of the affected personnel to the camp. Personnel that do not require air or road transportation will be requested to walk back.*

- *During helicopter transport of personnel the Air Traffic Management Plan (in appendix A) will be applied to protect the caribou herd (avoidance distance of 1,000 m vertical and 1,500 m horizontal).*

PERMITTED ACTIVITIES DURING A WORK SUSPENSION



- **Only essential activities to the site function and health and safety will be allowed:**
 - Refueling of essential generator and power supplies;
 - Operation/maintenance of water treatment systems; (diesel pumps required to manage CP/SP water levels)
 - Critical inspections required in case of a malfunction;
 - ERT deployment in case of a Code 1;
 - Intervention in case of a reportable spill;
 - Medical treatment or site evacuation of employee;
 - Time-sensitive environmental compliance work;
 - Activity intended to prevent a health and safety or environmental risk.

All activities, not previously approved by the Environment Dept., during a Migration Level 3 will require approval by the Mine Manager or acting Manager.

MELIADINE AWAR TRAFFIC SUSPENSION PROTOCOL



FOR LEVEL 3: In accordance with the IIBA/TEMMP, traffic will be suspended or stopped on the AWAR, when 50 caribou or more are within 100 m from the all weather access road (AWAR)

- All vehicle traffic for transport to and from the site will be suspended (road closure) and /or stopped (for wildlife right-of-way) to allow caribou herds to cross the road;

- Wildlife has the right-of-way and vehicles must wait without disturbing their movements.

- The use of the road for operations, mining or construction related activities will cease until caribou herds have moved outside the 5 km radius stop work buffer zone around the Meliadine Site (ex. Fuel delivery from M&T will not go on the AWAR if the site is closed, unless exception by KIA is provided).

CREW CHANGE:

- Crew change will be performed when no caribou herds (50 or more) are present within 100 m from the AWAR; delays in flight schedules are planned based off the morning survey.
- Wildlife surveys completed on the AWAR by Env. staff and monitoring data (collaring, observation from gate house, community information) will confirm if a crew change can be performed;
- Crew change will be authorized by the Mine Manager or Acting Manager, in consultation with Env.;
- Notifications will be sent by the Environment department to KIA, GN, and the local HTO to inform that a crew change will be performed;
- Busses will be escorted by Env. to ensure wildlife right-of-way;



“CARIBOU MIGRATION ALERT” NOTIFICATION



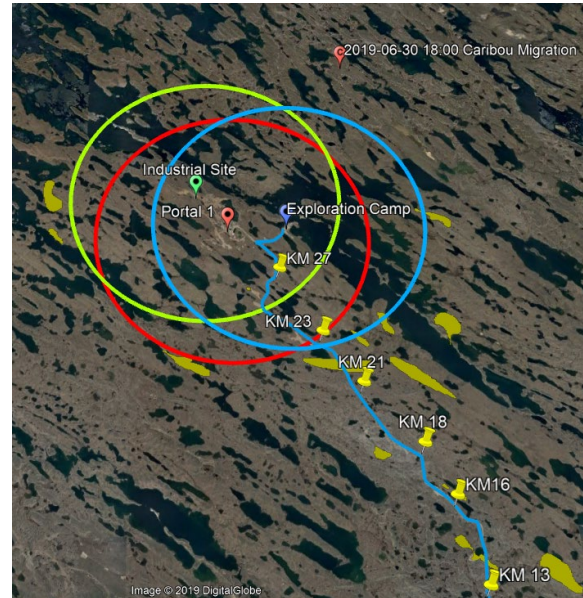
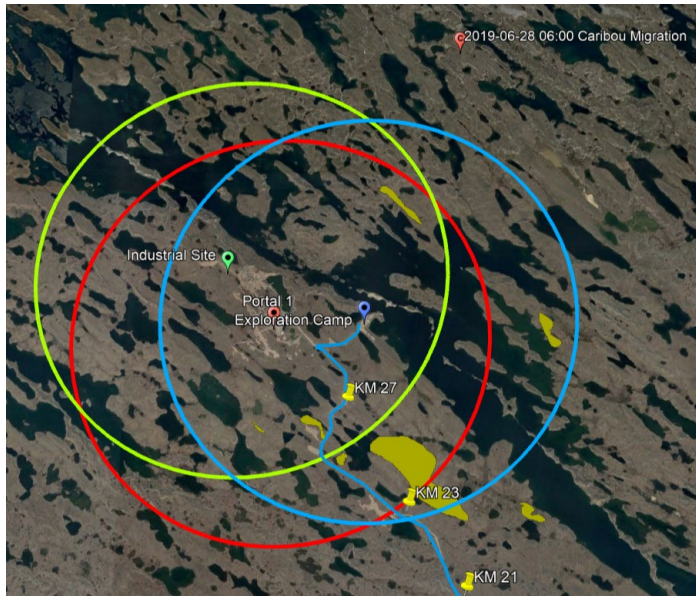
- Following the ground surveys, a “Caribou Migration Alert” will be issued to all of Meliadine employees and contractors, as well as the HTO, GN, CIRNAC and KIA.
- The information contained within the notification will include:
 - A map showing where the herd(s) have been observed
 - Where activities are suspended
 - Where activities can resume, if possible
 - Road restrictions (closed/open, speed restrictions)
 - Additional restrictions (light duty in effect?)
- The site restrictions will be based on three distinct protection zones on site: Exploration Camp; Industrial Site; and Portal, as well as the AWAR.
- Itivia is excluded as this is not part of the typical caribou migration route.



MELIADINE PROJECT PROTECTION ZONES



- Meliadine Site – 5 km radius around the Project, main work locations include Exploration Camp, Portal 1, and the Industrial Pad.
- AWAR – 100 m within the road



Example of caribou map format for daily maps



CARIBOU MANAGEMENT STRATEGY FOR 2022



- With the current COVID-19 restrictions, the site is current in “isolation” from the community in order to prevent the transmission of COVID-19; detached operations from town is still present; is a local hunter stops there ATV to talk with you; windows must remain closed.
- A detached protocol is in place to manage instances where a regulator is required to come on site to fulfill specific duties; if an update related to Agnico's detached protocols occurs, an email communication will be sent to stakeholders.
- All AWAR users coming to site MUST have food/water rations for 48 hours and a survival kit in case the user gets stuck on the road due to caribou
- HTO/Environmental techs (AEM) will be primarily focused on completing the 3x/day AWAR wildlife surveys during caribou migration
- KIA-AEM collaboration for 2022 is to be defined (Similar strategy as 2019-2021?)
- During the migration period, a morning meeting (6:45 CST) will be held with representatives from each of the main groups to discuss the caribou migration impact on the day's activities.
 - The KIA will participate in this meeting via teleconference (HTO participation?)
 - A representative from Agnico's management team and Environment must attend the meeting
- The Environment General Supervisor/Coordinator will be the main point of contact for any questions regarding caribou migration.
- The movement of caribou herds are tracked daily through collaring data. This frequency will be increased to twice weekly starting in June.

EFFECTED STAKEHOLDERS ON THE MELIADINE SITE

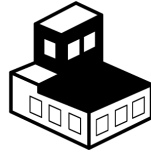
Geology



Logistics



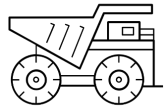
E&I



Mine UG



Process Plant



Mine Open Pit



Regional
Exploration



Communications &
Community Relations



Environment



Construction



AGNICO EAGLE



THANK YOU





Reportable Spills

ENVIRONMENTAL TOPIC



2023-02-08



Spills Overview

Environment must be notified of **any spill, regardless of quantity or material**



Some spills must be reported within 24hrs to the authorities (GN, CIRNAC, ECCC, NWB..)

= “reportable spills”

All other spills. Reported monthly and annually in the Meliadine Annual Report

= “non-reportable spills”

	2019	2020	2021
Reportable Spills & Exceedances	25	24	27





What is a “Reportable Spill”?

**Any Spill ON WATERBODY
Raw Sewage/Greywater
Emulsion**

**Any
amount**

**Petroleum Hydrocarbons
Waste oil
Coolant**

100 L+

**In any doubt, refer to the Environment
Department!**

SCHEDULE B

(Section 9)

Item No.	TDGA Class	Description of Contaminant	Amount Spilled
1.	1	Explosives	Any amount
2.	2.1	Compressed gas (flammable)	Any amount of gas from containers with a capacity greater than 100 l.
3.	2.2	Compressed gas (non-corrosive, non flammable)	Any amount of gas from containers with a capacity greater than 100 l.
4.	2.3	Compressed gas (toxic)	Any amount
5.	2.4	Compressed gas (corrosive)	Any amount
6.	3.1, 3.2, 3.3	Flammable liquid	100 l
7.	4.1	Flammable solid	25 kg
8.	4.2	Spontaneously combustible solids	25 kg
9.	4.3	Water reactant solids	25 kg
10.	5.1	Oxidizing substances	50 l or 50 kg
11.	5.2	Organic Peroxides	1 l or 1 kg
12.	6.1	Poisonous substances	5 l or 5 kg
13.	6.2	Infectious substances	Any amount
14.	7	Radioactive	Any amount
15.	8	Corrosive substances	5 l or 5 kg
16.	9.1 (in part)	Miscellaneous products or substances, excluding PCB mixtures	50 l or 50 kg
17.	9.2	Environmentally hazardous	1 l or 1 kg
18.	9.3	Dangerous wastes	5 l or 5 kg
19.	9.1 (in part)	PCB mixtures of 5 or more parts per million	0.5 l or 0.5 kg
20.	None	Other contaminants	100 l or 100 kg





Spills on a Waterbody

From our Spill Contingency Plan (associated with the Water Licence):

Any amount of unauthorized release on a waterbody (lake or lake ice), including:

- Effluent (including treated water)
- Fuel or other hydrocarbons
- Hazardous Material



**Reportable
Spills**

From the Fisheries Act:

**Any amount of a deleterious substance*
released on a waterbody (lake or lake ice)**

*Deleterious substance: “any substance that, if added to any water would degrade or alter the water quality such that it could directly or indirectly harm fish, fish habitat, or the use of fish by humans”

Examples are (but not limited to): petroleum products, chemicals, heavy metals, suspended solids





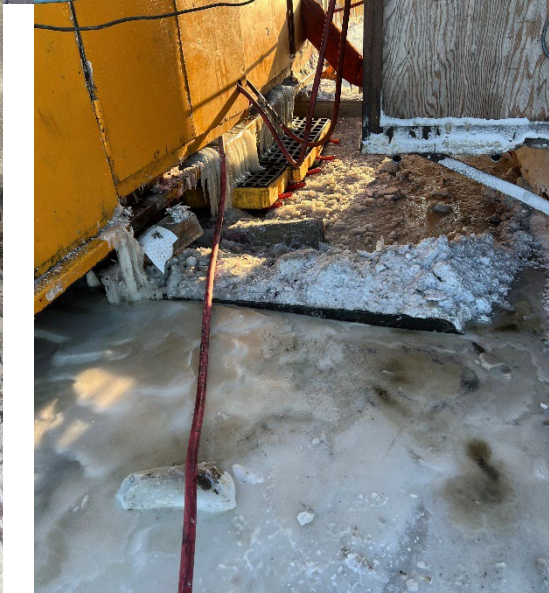
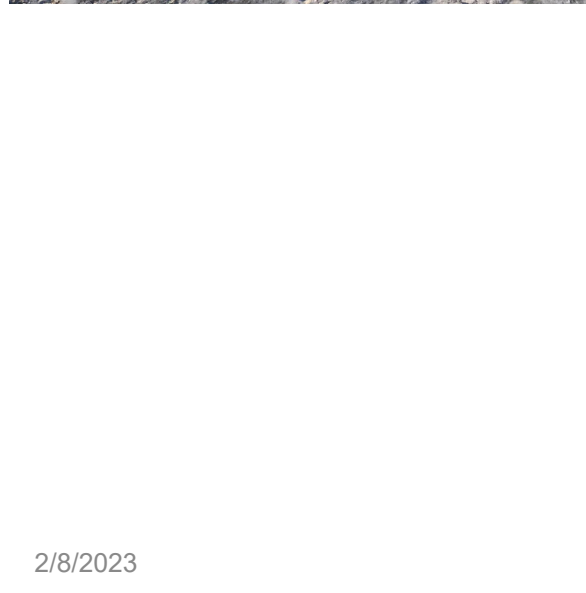
Spills can lead to...

- Impacts on the environment and wildlife
- High number of reportable spills can impact BONUS \$
- If we don't respect our obligations or if we are negligent:
 - **Regulator's inspections, investigations, warning letters & others**





AGNICO EAGLE
MELIADINE





Spill Response

1. IF SAFE, stop the activity causing the spill
2. IF SAFE, contain the spill (secondary containment, spill pads/booms, etc.)
3. Report the spill → Fill the spill report, contact ENV Coordinator
4. Clean-up the spill:
 - **Contact the ENV Department to know where to dispose of contaminated materials (contaminated soil, ice/snow, water)**
 - **Record the amount of contaminated material recovered and put into: Snow Cell, Landfarm, barrels/totes, etc.**





Prevention

Preventing a spill is much easier than cleaning it!

- Identify the potential risks for spills in your work area → apply mitigation as needed
- Good housekeeping
- Proper equipment inspections
- If a spill is to happen with all the mitigation measures in place, will the spill be contained?





AGNICO EAGLE



MELIADINE WASTE MANAGEMENT STANDARDS

Meliadine



Problems Encountered with Waste Segregation

Incorrect Waste Disposal

- Food waste, wood and hazardous waste deposited in flip bins/roll-off bins and being deposited in the landfill.

Littering

- Cigarette butts, liquids (coffee, juice, etc.), urine outside the vicinity

Unlabeled Waste

- Second-hand manipulation is difficult and dangerous when unlabeled waste is being dropped of in the yard of the incinerator

Mishandling and disposal of Hazardous Waste

- Hazardous waste being disposed of in incinerator waste garbage

Incorrect Waste Segregation Outcomes

health hazards

- Compressed cans exploding in the incinerator are a danger for operators;
- Unproper waste storage can crush/hurt an individual;
- Unlabeled hazardous waste are a threat for the people managing it;
- Increasing wildlife on-site and risk of rabies transmission.

Negative impacts on our social license to operate

- Are you managing the waste in your back yard the same way as you are here ?
- It is our responsibility to manage our facility in a way that the community and each of us will be proud to work for.

Wildlife attraction and kills

- An habituated fox is a dead fox
- September to December: 21 foxes euthanatized (21,000\$)



Here are some examples...



Some Environmental Inspection Statistics...



Mine UG

53 inspections conducted in 2021 :

38 non-conformities related to Waste

**45% of non-conformities are related to
Waste Management issues**





Help us to
help You!

- Do you have all the tools to segregate your waste ?
- Are all bins in your work area labeled ?
- Do you have any concerns or questions regarding waste management?
- Do you have any inputs/ideas on how we could improve waste management in your work area/on-site ?

Other potential environmental improvements?

- Add serpentine or logs near sumps to collect floating oil (or within Jumbo's spill kits)?
- Increase number of spill kits (inventory)?