

Appendix C1

Flow Meter Calibration Datasheets

Production Flow Facility Calibration Data

Ave. Miguel de Cervantes 111, Complejo Industrial Chihuahua, Chihuahua, Mexico 31100

Model number: 8705PHA120C1W0N0DT

Calibration Date: Aug 07, 2009

Serial Number: 870176848

Calibration Number: 1139505211101005

Trace Number: 364334401

Transmitter: 8712D

Sales Order: 2384973

Customer Tag: SO 1015736BC

Run #	Flow rate % FS ¹	Velocity ft/s	Velocity m/s	Flow rate US gpm	Flow rate m ³ /hr	Deviation % rate
1	102.7%	10.3	3.13	3,621	822.5	-0.06%
2	102.7%	10.3	3.13	3,621	822.4	-0.12%
3	102.6%	10.3	3.13	3,617	821.4	-0.02%
4	33.3%	3.3	1.02	1,176	267.0	-0.25%
5	33.1%	3.3	1.01	1,166	264.7	-0.17%
6	32.8%	3.3	1.00	1,157	262.8	-0.17%
7	12.1%	1.2	0.37	426	96.7	-0.05%
8	12.1%	1.2	0.37	425	96.6	-0.08%
9	12.1%	1.2	0.37	425	96.6	-0.07%

Calibration conditions:

Water temperature = 83.9 °F (28.8 °C) Water conductivity > 200 µMho
¹100% flow rate = 10 ft/sec (3.05 m/s) in schedule 40 pipe.

Measuring and test equipment used in the manufacture and inspection of the above flowmeter are directly traceable to the National Institute of Standards and Technology to meet the intent of

INSTRUMENT DATA SHEET

PROJECT:	MEADOWBANK GOLD PROJECT	PREP. BY:	SC	SPEC. No.:	MDB-S-J-228
CLIENT:	AGNICO-EAGLE MINES LTD. (AEM)	CHECKED BY:	SC	REV. No.:	0B
PROJECT No.:		APPROV. BY:		DATE:	SEPT. 29 2014
TAG NUMBER:	(SENSOR) 650-FE-012				
TAG NUMBER:	(TRANSMITTER) 650-FIT-012				
DESCRIPTION:	Magnetic Flow Transmitter				
APPLICATION:	FRESH WATER - FLOW				
MANUFACTURER:	Rosemount				
SUPPLIER:	-				
MODEL NO.:	8712ESR1A1N0M4DT				
TRANSMITTER:	TYPE: MICROPROCESSOR BASED DIFFERENTIAL PRESSURE TRANSMITTER				
	MAXIMUM RANGE: 2198 m3/hr				
	CALIBRATED SPAN: 1675 m3/hr				
	OUTPUT: 4-20 mA D.C., ISOLATED, HART PROTOCOL				
	DISPLAY: MIN. 4 DIGIT LCD (FLOW RATE), CONFIGURATION / SETUP				
	POWER REQUIRED: 120 VAC 60 Hz				
	ENCLOSURE: NEMA 4				
	MOUNTING: WALL MOUNT				
	ELECTRICAL CONNECTION 1/2" NPT				
FLOW TUBE:	MODEL NUMBER: 8705PHA120C1W0N0DT				
	TYPE: PULSE D.C.				
	COIL FREQUENCY 5Hz				
	VELOCITY RANGE: 1675 m3/hr				
	SIZE: DN 250 (10')				
	PROCESS CONNECTION DN 250 (10') 150# ANSI				
	POWER REQUIRED: FROM TRANSMITTER				
	CABLE:				
	ENCLOSURE: NEMA 4				

ACCESSORIES:

PROCESS CONNECTION:
 BODY MATERIAL
 TRIM MATERIAL
 SEATS
 MOUNTING BRACKET

TAGGING:

SERVICE:

FLUID:	FRESH WATER				
PIPE SIZE & TYPE:	10" DIA. STANDARD WEIGHT, CARBON STEEL				
PIPE I.D.:	10.02" ID, (0.373" WALL THICKNESS)				
	UNITS	MAXIMUM	NORMAL	MINIMUM	
FLOW:	m/h				
VELOCITY:	m/s (ft/s)				
AMBIENT TEMPERATURE:	DEG. C	40	20	5	
PROCESS TEMPERATURE:	DEG. C	20	15	5	
PRESSURE:	kPa	103	103	103	
S.G. RELATIVE TO WATER	S.G.	1.00	1.00	1.00	
VISCOSITY	cP		1.0		

REMARKS:

- BETA RATIO AND BORE SIZE TO BE VERIFIED BY VENDOR. VENDOR TO PROVIDE ORIFICE SIZING CALCULATION FOR APPROVAL PRIOR TO BEGINNING MANUFACTURING.

650-FIT-002B

This Page (A)

SP 84.00
PV 84.19
CV 51.88
Local

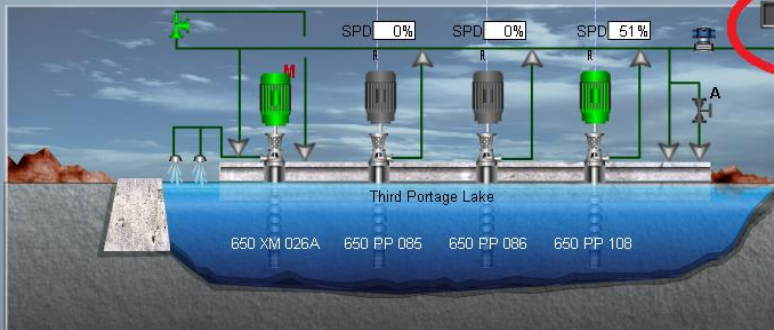
Fresh/Reclaim Water High Select Switch



FRESH

VFD Speed Control

Reclaim 257.00 KPA



SP 56.74
PV 56.74
CV 0.00
Local

0.15 m3/hr

50.72 m3/hr

51.36 m3/hr

Fresh Water to Reclaim Tank Volumetric Total		
	Previous	Current
Shift	0.00	0.00
Day	0.02	0.00

Fresh Water To Fresh Water Tank Volumetric Total		
	Previous	Current
Shift	762.85	559.91
Day	1166.06	1322.76

FLA 0%
SPD 0%



650 PP 068

Pumps trip on Fresh Water LL Alarm on TK 037

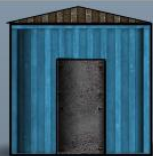
FLA 51%
SPD 85%



650 PP 067

SP 530.00
PV 528.50
CV 85.26
Local

528.50 Kpa



Fresh Water Barge E-House

SP 85.00
PV 84.28
CV 99.94
Local

This Page (B)

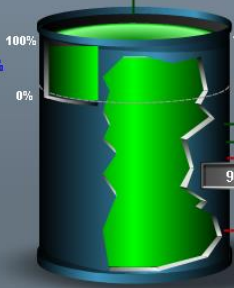
A

99.94 %

Barge is running on Normal Power

This Page (A)

84.19 %



96.07 %



650 XM 026

AUTO

650 TK 037

Fire Water Pumps are Controlled Independently of the Control System

650 PP 076

650 PP 077

650 PP 065

- Reclaim Water Tank
- Intens. Cyanidation 320 XM 006
- Furnace Hydr. Power Supply
- Carbon Utilities
- Copper Sulfate 370 TK 032
- NaOH Tank 370 TK 054
- Lime 370 TK 050
- Gland Water Tank 650 TK 057
- SO2 Plant
- Flocculant 370 XM 030
- PSM 370 SA 001 A
- Potable Water 650 CX 001

Potable Water 540WTP001

650 PP 137

Fire Water Distribution

