

## **Appendix D1**

---

# **Mine Waste Rock and Tailings Management Plan**

---

---



# **AGNICO EAGLE**

**MEADOWBANK GOLD MINE**

**UPDATED MINE WASTE ROCK AND TAILINGS MANAGEMENT  
REPORT & PLAN - 2017**

**MARCH 2018**



## UPDATED MINE WASTE ROCK AND TAILINGS MANAGEMENT PLAN

### EXECUTIVE SUMMARY

Agnico Eagle Mines Ltd. Meadowbank Division (AEM) is operating the Meadowbank Gold Mine (the Mine), located on Inuit-owned surface lands in the Kivalliq region approximately 70 km north of the Hamlet of Baker Lake, Nunavut. The Mine is subject to the terms and conditions of both the Project Certificate issued in accordance with the Nunavut Land Claims Agreement Article 12.5.12 on December 30, 2006, and the Nunavut Water Board Water License No. 2AM-MEA1525 issued on July 23, 2015. This report presents an updated 2017 version of the Mine Waste Rock and Tailings Management Plan.

The Mine consists of several gold-bearing deposits: Vault, Portage and Goose Island. A series of dikes are required to isolate the mining activities from neighboring lakes. The dikes were and will be constructed using quarried materials or using materials produced during mining.

Mining in the Goose Island Pit finished in 2015; the waste rock from this pit has been stored in the Portage Rock Storage Facility (Portage RSF) and Goose NAG dump. Waste rock from the Portage Pit is currently being stored in the Portage Rock Storage Facility (Portage RSF), and in the Portage Pit as infill. Pit infill is only carried out in areas where mining is completed, and, as such, contributes to the overall fish habitat compensation approved by Fisheries and Oceans Canada (DFO). The Portage RSF was constructed to minimize the disturbed area and will be capped with a 4m layer of non-acid-generating (NAG) rock to constrain the active layer within relatively inert materials. In fact, this 4m capping has been completed around the perimeter of the Portage RSF and is considered part of progressive reclamation. This control strategy is designed to minimize the onset of oxidation and the subsequent generation of acid rock drainage through freeze control of the waste rock as a result of permafrost encapsulation and capping with an insulating convective layer of NAG rock. The waste rock below the capping layer is expected to freeze, resulting in low rates of acid rock drainage (ARD) in the long term. Thermistors currently installed in the Portage RSF indicate that freezing is occurring.

Mining commenced at the Vault Pit mining operation in 2014. Waste rock from the Vault Pit mining operation is currently being stored in the Vault Waste Rock Storage Facility (Vault RSF). The approvals by regulatory agencies to allow mining in Phaser and BBPhaser Pits have been received in 2017, mining in Phaser Pit was initiated at the end of Q2 2017 and startup of the potential BBPhaser Pit is planned in Q1 2018. Waste rock from the Vault, Phaser and BBPhaser Pits are (and will be) stored in the existing Vault RSF. Geochemical predictions indicate that a NAG capping layer will not be required over the Vault RSF as the majority of waste rock is considered NAG. To date, through the ARD testing program, it has been determined that approximately 87% of the waste rock generated at Vault is NAG. As a precaution, PAG waste rock is placed in the middle of the Vault RSF;



## UPDATED MINE WASTE ROCK AND TAILINGS MANAGEMENT PLAN

this material will be covered with at least 4m of NAG to ensure proper encapsulation and minimize any generation of ARD. An adaptive management plan includes monitoring of water quality during operations to confirm modelling predictions and to allow adjustments to the closure plan as required. The waste rock is expected to eventually freeze.

The Tailings Storage Facility (TSF) is delineated by a series of dikes built (and to be built) around and across the basin of the dewatered northwest arm of Second Portage Lake. The TSF is divided into the North and South Cells. From 2010 to 2015 tailings were placed in the North Cell. The North Cell of the TSF is delineated by the Stormwater Dike (separates North and South Cells), Saddle Dams 1 and 2 and perimeter rockfill road structures. Tailings deposition commenced in the South Cell in 2014 and will continue until 2018 when mine operations are scheduled to cease (North Cell deposition was completed in summer 2015). The South Cell is delineated by the Central Dike and Saddle Dams 3, 4 and 5. The division of the TSF into cells allows tailings management in comparatively smaller areas with shorter beach lengths that reduce the amount of water that is trapped in tailings and permanently stored as ice. Operation in cells also allows progressive closure and cover trials to begin in the North Cell (2014 to 2017) while tailings deposition continues in the South Cell.

Tailings are placed sub-aerially and sub-aqueously as slurry and water from the pond is reclaimed during operation. The current tailings deposition strategy is to build beaches against the faces of the perimeter dikes to push the pond away, and ultimately produce a tailings surface that directs drainage towards the western abutment of the Stormwater Dike. Following mine operations, a minimum 2-m thick cover of NAG rockfill will be placed over the tailings as an insulating convective layer to confine the active layer within relatively inert materials. The final thickness of the rockfill cover layer will be confirmed in the final design based on thermal monitoring to be completed during operations. The control strategy to minimize water infiltration into the TSF and the migration of constituents out of the facility includes freeze control of the tailings through permafrost encapsulation. Capping commenced in the northeast area of the North Cell TSF in 2015 and continued in 2016 and 2017. Further capping of the North Cell is planned in 2018

A Thermal Monitoring Plan (TMP) was developed to observe the freezeback of the TSF and RSFs in order to comply with the Nunavut Water Board (NWB) Water License 2AM-MEA1525. The license requires a TMP to monitor temperatures of the TSF and RSFs during, and after, mining operations.

All infrastructures needed for mine operations, closure and reclamation, including mine waste management areas, will be re-contoured and/or surface treated during closure, according to site specific conditions, to minimize windblown dust and erosion from surface runoff.



UPDATED MINE WASTE ROCK AND TAILINGS  
MANAGEMENT PLAN

DOCUMENT CONTROL

Version	Date (YM)	Section	Page	Revision
1	2009/10	All	All	Original Plan
2	2013/04	All	All	Comprehensive update to Original Plan
3	2014/03	All	All	Comprehensive update to Original Plan
4	2015/03	Section 1, 2, 3, 4, 5, 6		Updated with the actual Life of Mine (LOM) for operations ending in Q3 2017
		Section 7		Updated according to the tailings deposition plan and water balance for the actual Life of Mine (LOM) for operations ending in Q3 2017
		Section 8		Updated according to additional instruments installed and future monitoring plan
		Section 9		Updated according to additional monitoring plan for final closure design
5	2016/03	All	All	Comprehensive update to Original Plan
6	2017/03	All	All	Comprehensive update to Original Plan
7	2018/03	All	All	Comprehensive update to Original Plan

Prepared By: Engineering and Environmental Departments



## UPDATED MINE WASTE ROCK AND TAILINGS MANAGEMENT PLAN

### Table of Contents

<b>1</b>	<b>INTRODUCTION .....</b>	<b>2</b>
<b>2</b>	<b>BACKGROUND INFORMATION .....</b>	<b>5</b>
2.1	Mining Operation Description.....	5
2.1.1	Site Conditions.....	6
2.1.2	Climate.....	6
2.1.3	Faults.....	7
2.1.4	Permafrost.....	7
<b>3</b>	<b>MINE DEVELOPMENT PLAN .....</b>	<b>16</b>
3.1	Mine Waste Production Sequence.....	16
3.2	Mine Development Sequence (2018).....	38
<b>4</b>	<b>CONTROL STRATEGIES FOR ACID ROCK DRAINAGE IN COLD REGIONS .....</b>	<b>45</b>
<b>5</b>	<b>OVERBURDEN MATERIALS.....</b>	<b>48</b>
5.1	Lake Bottom Sediments .....	48
5.2	Till .....	49
<b>6</b>	<b>MINE WASTE ROCK .....</b>	<b>50</b>
6.1	Waste Rock Properties .....	50
6.2	Waste Rock Facility Management.....	51
6.3	Waste Rock Storage Dimensions.....	52
6.4	Portage Rock Storage Facility Expanded Area.....	52
<b>7</b>	<b>TAILINGS MANAGEMENT .....</b>	<b>54</b>
7.1	Tailings Properties .....	54
7.2	Tailings Management Strategies .....	56

UPDATED MINE WASTE ROCK AND TAILINGS  
MANAGEMENT PLAN



7.3 Tailings reclamation ..... 57

7.4 Tailings Freezeback and Seepage ..... 59

    7.4.1 Monitoring of Tailings Freezeback..... 60

    7.4.2 Monitoring of Tailings Seepage ..... 61

    7.4.3 Requirements for Sumps and Seepage Pump Back..... 62

7.5 Tailings Deposition Planning ..... 62

7.6 Tailings Storage Facility Capacity..... 66

**8 THERMAL MONITORING PLAN ..... 72**

8.1 Instrument Location ..... 73

    8.1.1 Operations ..... 76

    8.1.2 Closure ..... 80

8.2 Instrument Specifications..... 80

**9 MONITORING AND CLOSURE ..... 97**

**10 REFERENCES ..... 102**



## List of Tables

<i>Table 2.1: Estimated Average Monthly Climate Data – Meadowbank Site .....</i>	6
<i>Table 2.2: Summary of Reported Climate Change Rates Used in Northern Projects Engineering Studies .....</i>	9
<i>Table 3.1: Meadowbank Mined Tonnages for 2009 .....</i>	17
<i>Table 3.2: Meadowbank Mined Tonnages for 2010 .....</i>	18
<i>Table 3.3: Meadowbank Mined Tonnages for 2011 .....</i>	20
<i>Table 3.4: Meadowbank Mined Tonnages for 2012 .....</i>	22
<i>Table 3.5: Meadowbank Mined Tonnages for 2013 .....</i>	24
<i>Table 3.6: Meadowbank Mined Tonnages for 2014 .....</i>	26
<i>Table 3.7: Meadowbank Mined Tonnages for 2015 .....</i>	28
<i>Table 3.8: Meadowbank Mined Tonnages for 2016 .....</i>	30
<i>Table 3.9: Meadowbank Mined Tonnages for 2017 .....</i>	32
<i>Table 3.10: Projected Meadowbank Mined Tonnages (2018) .....</i>	34
<i>Table 3.11: Portage PAG Destinations &amp; Tonnages (2018) .....</i>	35
<i>Table 3.12: Portage NAG Destinations &amp; Tonnages (2018) .....</i>	36
<i>Table 3.13: NAG Stockpile for mine closure requirement, Destinations &amp; Tonnages (2018 – 2019).....</i>	37
<i>Table 3.14: Mine Development Sequence .....</i>	38
<i>Table 4.1: Acid Mine Drainage Control Strategies of the Arctic .....</i>	46
<i>Table 5.1: Estimate of Lake Bottom Sediment Volumes.....</i>	49
<i>Table 6.1: Quantities of Waste Rock by Destination .....</i>	50





**UPDATED MINE WASTE ROCK AND TAILINGS  
MANAGEMENT PLAN**

<i>Table 6.2: Details of Rock Storage Facilities</i> .....	52
<i>Table 7.1: Relevant Data for Tailings Storage Facility</i> .....	55
<i>Table 7.2: 2017 Processed Tailings Volume and Associated Properties</i> .....	56
<i>Table 7.3: Measured parameters used for South Cell modelling</i> .....	67
<i>Table 7.4: South Cell tailings deposition modelling parameters</i> .....	69
<i>Table 7.5: Average Height Increase of Tailings Surface Elevation for Various Amounts of Ice Entrapment based on Golder, 2008b</i> .....	70
<i>Table 8.1: Thermistor Specifications</i> .....	80
<i>Table 8.2: Existing and Proposed Thermistor Installation Details</i> .....	81

## List of Figures

<i>Figure 2-1: Permafrost Map of Canada</i> .....	8
<i>Figure 2-2: General Site Plan</i> .....	11
<i>Figure 2-3: Thermistors and Section Location Plan (note that some of the instruments presented on this figure are not in use anymore)</i> .....	12
<i>Figure 2-4: Baseline Thermal Condition below Second Portage Arm</i> .....	13
<i>Figure 2-5: Inferred Locations of Faults</i> .....	14
<i>Figure 2-6: Baseline Permafrost and Groundwater Conditions</i> .....	15
<i>Figure 3-1: Current Status (EOY 2016) for Portage Pit, Vault Pit &amp; Dumps</i> .....	40
<i>Figure 3-2: Current Status (EOY 2016) Capping Portage Rock Storage Facility with NAG</i> .....	41
<i>Figure 3-3: Development Sequence Year 1 (2017)</i> .....	Error! Bookmark not defined.
<i>Figure 3-4: Development Sequence Year 2 (2018)</i> .....	42
<i>Figure 3-5: Development Sequence Year 3 (2019)</i> .....	43
<i>Figure 3-6: Conceptual Mining Sequence (Life of Mine)</i> .....	44
<i>Figure 6-1: Waste Rock Expansion Area</i> .....	53
<i>Figure 7-1: Tailing Storage Facility Main Components</i> .....	65
<i>Figure 7-2: Tailings Storage Facility Stage Storage Volume Curve</i> .....	66
<i>Figure 7-3: Tailings Storage as a Function of Ice Content</i> .....	71
<i>Figure 8-1: Installed Thermistor Location (red were installed in 2017, black are old ones)</i> .....	74
<i>Figure 9-1: Site Post Closure Concept</i> .....	99
<i>Figure 9-2: Portage Tailings and Rock Storage Closure Design Concept Cross Section</i> .....	100



*Figure 9-3: Vault Rock Storage Closure Design Concept Cross Section* ..... 101

## Appendix

Appendix 1: TSF Integrated Deposition Plan

UPDATED MINE WASTE ROCK AND TAILINGS  
MANAGEMENT PLAN



MEADOWBANK MINE LOCATION MAP





## UPDATED MINE WASTE ROCK AND TAILINGS MANAGEMENT PLAN

### 1 INTRODUCTION

---

During operations and according to the 2017 Life of Mine calculation, the mine will generate a total of approximately 213.4 Mt of mine waste rock & till and 29.9 Mt of tailings (placed in TSF with in situ density) from the following deposits:

- Portage
- Goose (mining ceased in early 2015); and
- Vault (which includes Phaser Pit and the potential BBPhaser Pit, once approved).

Tailings are stored within the Tailings Storage Facilities (TSF – North and South Cells). The TSF includes dikes/dams built; and to be built, and is located within the basin of the former north-west arm of Second Portage Lake (2PL) which has been dewatered to allow mining in the Portage Pit. The TSF was separated by the Stormwater Dike to form a North and South Cell. From 2010 until November 2014, and again in June – September 2015, tailings were deposited into the North Cell. A series of Saddle Dams (1 and 2) were constructed around the North Cell TSF to ensure that the tailings are impounded onsite. The South Cell (former Portage Attenuation Pond) is now operating and receiving tailings. From November 2014 to June 2015 tailings were deposited in the South Cell, and from November 2015 to 2018 tailings are planned to be deposited in the South Cell. South Cell containment is accomplished by the construction of the Central Dike which is now at elevation 143m and will be raised to 145masl to match the Saddle Dams actual elevation. Saddle Dams 3, 4 and 5 were partially constructed in 2015 to complete the South Cell TSF delineation boundary to elevation 137m and were brought to their final elevation of 145m in 2017. With the addition of those dikes, the South Cell TSF is now fully contained at this elevation for the current Life of Mine. The mine is now scheduled to cease production at the end 2018.

At the present time, tailings are placed subaqueously as slurry in the South Cell and water from the pond is reclaimed by the mill. The tailings deposition strategy is to build beaches against the face of the Central Dike such that the water/drainage is directed towards the west end of the cell. Thermal modelling indicates that the tailings will freeze in the long term, and that the talik that currently exists below 2PL Arm will freeze before any seepage from the TSF reaches the groundwater below the permafrost. Thermistor monitoring results to date indicate that this is occurring in the North Cell, therefore the potential for groundwater contamination to occur as a result of seepage from the TSF is considered low. Refer to the Groundwater Monitoring Report in the appendix of the 2017 Annual Report for more details.



## UPDATED MINE WASTE ROCK AND TAILINGS MANAGEMENT PLAN

Tailings are potentially acid generating (PAG); therefore a minimum 2m thick cover of non-potentially acid generating (NAG) rock-fill will be placed over the tailings to physically isolate the tailings and to confine the active layer within relatively inert materials. A 2-m capping cover over the closed North Cell TSF has been initiated in 2015 and continued in 2016 and 2017 following a determined geometry. Cover trials have been initiated in the North Cell (in 2014) to determine the required cover thickness to physically isolate the tailings and to confine the active layer. Some capping over the North Cell was completed in 2015. Further capping was completed in the winter of 2016, 2017 and planned in 2018. The control strategy to minimize water infiltration into the TSF and the migration of constituents out of the facility includes freeze control of the tailings through permafrost encapsulation.

Waste rock from the Portage and Goose (mining ceased in Goose Pit early 2015) open pits is stored in three areas. The first being an area to the north of 2PL Arm and to the west of the Vault Haul Road, designated as the Portage Rock Storage Facility (Portage RSF). The second storage location is within the mined out portions of Goose Pit and Portage Pit (Pits B, C, D, and E); which will ultimately be flooded. This deposition forms part of AEM's fisheries habitat compensation approved by the Fisheries and Oceans Canada (DFO). The third storage location is called the Goose NAG dump; this is a temporary location that will be reclaimed at closure to provide required NAG material. Waste rock from the Vault, Phaser and (potential) BBPhaser Pits will be stored in an area to the west of the pit, designated as the Vault Rock Storage Facility (Vault RSF). There is also a possibility of storing waste from the Phaser and BBPhaser Pits inside Phaser Pit as an in pit dumping location (see Figure 2-2).

The Portage RSF has been progressively capped around the perimeter with a 4m layer of NAG rock to constrain the active layer within relatively inert materials. So far, 86% of the Portage RSF has been capped. The final capping (top portion) will be completed upon mine closure to the same specification. All capping will be graded to promote runoff from the facility. The PAG waste rock is expected to freeze resulting in low rates of acid rock drainage (ARD) generation in the long term. To date, thermistor readings taken from within the Portage RSF indicate freezeback is occurring as predicted. Additional monitoring instruments were installed in 2015 within the RSF to verify the performance of capping and assess the thermal behavior of the RSF.

The Vault RSF will be graded at closure to encourage runoff and to provide a final shape consistent with the surrounding topography. The water seepage from the Vault RSF area is expected to be of suitable quality to allow discharge to the environment without treatment (Golder, 2007c), and capping of this facility is therefore not proposed. It has been determined to date through testing in accordance with the Meadowbank Acid Rock Drainage (ARD) Plan, that approximately 84% of the waste rock generated at Vault is NAG material. PAG rock is placed in the middle of the Vault RSF to ensure that it is capped with NAG material. Freezeback is expected to occur in the long term similar

UPDATED MINE WASTE ROCK AND TAILINGS  
MANAGEMENT PLAN



to the Portage RSF. An adaptive management plan will include monitoring of water quality during operations and closure to confirm modelling predictions, and to allow adjustments to the closure plan as required. A plan for the management of contact and diverted water is presented in this document.

Generally contact water from the Portage RSF will be directed toward the North and South Cell TSF, and non-contact water will be diverted by a ditching system to prevent contact with mine related activities. Contact water from the Vault RSF is directed to the Vault Pit and subsequently pumped to the Vault Attenuation Pond.





## UPDATED MINE WASTE ROCK AND TAILINGS MANAGEMENT PLAN

### 2 BACKGROUND INFORMATION

---

#### 2.1 MINING OPERATION DESCRIPTION

The Meadowbank Gold Mine consists of several gold-bearing deposits within reasonably close proximity to one another. The three main deposits are: Vault (including Phaser and BBPhaser), Portage (South, Center and North Portage deposits), and Goose.

The South Portage deposit is located on a peninsula, and extends northward under Second Portage Lake (2PL) and southward under Third Portage Lake (3PL). The North Portage deposit is located on the northern shore of 2PL. The South, Center and North Portage deposits will be mined from a single pit, termed the Portage Pit, which will extend approximately 2 km in a north-south direction. The Goose deposit lies approximately 1 km to the south of the Portage deposit, and beneath 3PL. Mining was completed in the Goose Pit in early 2015. The Vault deposit is located adjacent to Vault Lake, approximately 6 km north of the Portage deposits. The Phaser and BBPhaser Pits are located within the footprint of Phaser Lake. A series of dewatering dikes (East, West Channel, Bay-Goose, South Camp and Vault) were required to isolate the mining activities from the lakes. Additional dikes (Central Dike, Stormwater Dike and Saddle Dams) were required to manage tailings within the dewatered 2PL Arm. East Dike, West Channel, Bay-Goose, South Camp and Stormwater Dikes, Saddle Dam 1 and Saddle Dam 2 were all constructed between 2008 and 2013. Central Dike, Saddle 3, 4 and 5 were constructed between 2012 and 2017. The dikes and dams were and will be constructed primarily using materials produced on site.

Mining is a truck-and-shovel open pit operation. The current mining plan indicates that approximately 1.3 Mt of ore will be mined over a nominal remaining mine life of approximately 0.75 years, ending in September 2018.





## UPDATED MINE WASTE ROCK AND TAILINGS MANAGEMENT PLAN

### 2.1.1 Site Conditions

The site layout is illustrated in Figure 2-2.

### 2.1.2 Climate

The Meadowbank region is located within a low Arctic Eco climate described as one of the coldest and driest regions of Canada. Arctic winter conditions occur from October through May, with temperatures ranging from +5°C to -40°C. Summer temperatures range from -5°C to +25°C with isolated rainfall increasing through September (Table 2.1).

**Table 2.1: Estimated Average Monthly Climate Data – Meadowbank Site**

Month	Max. Air Temp. (°C)	Min. Air Temp. (°C)	Rainfall (mm)	Snowfall (mm)	Total Precip. (mm)	Lake Evap. (mm)	Min. Relative Humidity (%)	Max. Relative Humidity (%)	Wind Speed (km/h)	Soil Temp. (°C)
January	-29.1	-35.5	0	11.2	11.2	0	67.1	75.9	16.3	-25.5
February	-27.8	-35.2	0	10.5	10.5	0	66.6	76.5	16.0	-28.1
March	-22.3	-30.5	0.1	14.6	14.6	0	68.4	81.4	16.9	-24.9
April	-13.3	-22.5	2.3	16.7	19.0	0	71.3	90.1	17.3	-18.1
May	-3.1	-9.9	9.8	11.3	21.1	0	75.7	97.2	18.9	-8.0
June	7.6	0.0	14.5	3.9	18.4	8.8	62.6	97.2	16.4	2.0
July	16.8	7.2	36.7	0.0	36.7	99.2	47.5	94.3	15.1	10.5
August	13.3	6.4	45.5	0.9	46.4	100.4	59.2	97.7	18.4	9.3
September	5.7	0.9	30.1	8.8	38.9	39.5	70.8	98.6	19.3	3.6
October	-5.0	-10.6	3.5	30.3	33.8	0.1	83.1	97.4	21.4	-2.8
November	-14.8	-22.0	0	23.6	23.6	0	80.6	91.1	17.9	-11.7
December	-23.3	-29.9	0	15.0	15.0	0	73.3	82.7	17.7	-19.9

*Note: Data from Baker Lake A station is available from 1946 to 2011. During this period, the data quality is good, with the exception of years 1946 to 1949, and 1993 which were removed from the compilation.*



## UPDATED MINE WASTE ROCK AND TAILINGS MANAGEMENT PLAN

The long-term mean annual air temperature for Meadowbank is estimated to be approximately 11.1°C. Air temperatures at the Meadowbank area are, on average, about 0.6°C cooler than Baker Lake air temperatures, and extreme temperatures tend to be larger in magnitude. This climatic difference is thought to be the effect of a moderating maritime influence at Baker Lake.

The prevailing winds at Meadowbank for both the winter and summer months are from the northwest. A maximum daily wind gust of 93 km/h was recorded on September 1, 2009. Light to moderate snowfall is accompanied by variable winds up to 70 km/h, creating large, deep drifts and occasional whiteout conditions. Skies tend to be more overcast in winter than in summer.

Table 2.1 presents monthly rainfall, snowfall and total precipitation values for the mine site. August is the wettest month, with a total precipitation of 43.4 mm, and February is the driest month, with a total precipitation of 6.1 mm. During an average year the total precipitation is 249.6 mm, split between 147.5 mm of rainfall and 102.1 mm of snowfall precipitation.

### 2.1.3 Faults

As indicated on Figure 2-5, two main faults are inferred in the Portage deposit area. The Second Portage fault trends to the northwest and is expected underneath the Central Dike and TSF, roughly parallel to the orientation of the Second Portage Lake. Analysis conducted during the design of the Central Dike showed little seepage potential. Seepage from the Central Dike has been observed since 2014. For additional information, refer to the 2017 Water Management Plan, in the appendix of the 2017 Annual Report.

### 2.1.4 Permafrost

The Meadowbank Gold Mine is located in the area of continuous permafrost, as shown on Figure 2-1

Lake ice thicknesses of between 1.5 m and 2.5 m have been encountered during geotechnical investigations in mid to late spring as well as a result of sampling campaigns undertaken by the Environment Department. Taliks (areas of permanently unfrozen ground) are expected where water depth is greater than about 2 to 2.5 m. Based on thermal studies and measurements of ground temperatures (Golder, 2003), the depth of permafrost at site is estimated to be in the order of 450 to 550 m, depending on proximity to lakes. The depth of the active layer ranges based on depth of overburden, vegetation and organics, proximity to lakes, and aspect is about 1 to 1.5 m.

Based on ground conductivity surveys and compilation of regional data, the ground ice content is expected to be low. Locally on land, ice lenses and ice wedges are present, as indicated by ground



UPDATED MINE WASTE ROCK AND TAILINGS MANAGEMENT PLAN

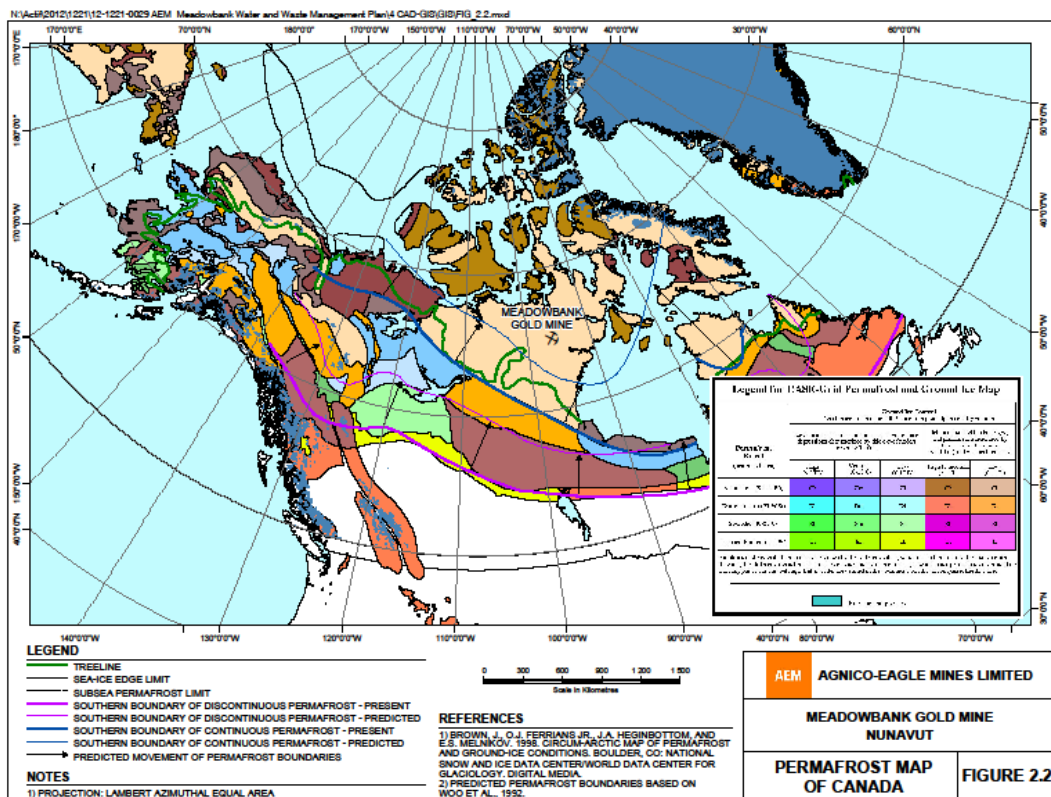
conductivity, and by permafrost features such as frost mounds. These areas of local ground ice are generally associated with low-lying areas of poor drainage.

A thermal monitoring plan, which meets the requirement of the Water Licence, is presented in Section 8 of this document.

2.1.4.1 Second Portage Lake Talik

Thermistors have been installed in numerous boreholes in previous years (see **Error! Reference source not found.** for locations); the inferred thermal regime beneath the 2PL Arm, based on measurements from these instruments, is shown in Figure 2-4. A talik exists below 2PL Arm, and is expected to extend to the base of the permafrost (Figure 2-6).

Figure 2-1: Permafrost Map of Canada



## UPDATED MINE WASTE ROCK AND TAILINGS MANAGEMENT PLAN



### 2.1.4.2 Vault Lake Talik

Due to the size of Vault Lake, the underlying talik is expected to be closed or confined within the permafrost. This means it does not extend to the deep groundwater flow regime, because the size and depth of the lake is not sufficient for an open talik to develop. Much of the lake is less than 2 m in depth; consequently it freezes to the bottom during winter.

### 2.1.4.3 Impact of Global Warming on Site Conditions

A report titled “Implications of Global Warming and the Precautionary Principle in Northern Mine Design and Closure” (BGC, 2003) was prepared for Indian and Northern Affairs Canada, and provides guidance relevant to mine design in Nunavut.

This report suggests that globally the average temperature may increase by about 2°C by 2100 due to global warming. However, the report also states that the increase may be double the global average for sites located at 50°N, and may be 3.5 times greater for sites located at 80°N. In a more recent study, the Intergovernmental Panel on Climate Change (IPCC, 2007) projected the maximum average air temperature to increase by 6.4°C by 2100 for a site located at 65°N latitude.

**Error! Not a valid bookmark self-reference.** presents a summary of reported climate change predictions used on a number of northern projects that have been reported in the engineering and scientific literature.

**Table 2.2: Summary of Reported Climate Change Rates Used in Northern Projects Engineering Studies**

Reference	Increase in MAAT by Year 2100 (°C)	Notes
Hayley (2004)	4.7	Used in design studies for the Inuvik Regional Health Center. Reported as increase of 0.47°C per decade.
Hayley and Cathro (1996)	5.0	Used for Raglan Dam analyses.
Diavik	3.2	Used for the Processed Kimberlite Containment Facility Design
Burn (2003)	6.0	For use in the Western Arctic for pipeline design projects. Reported as increase of 1.75°C over a 29 year period



## UPDATED MINE WASTE ROCK AND TAILINGS MANAGEMENT PLAN

Based on A report titled “Implications of Global Warming and the Precautionary Principle in Northern Mine Design and Closure” (BGC, 2003) was prepared for Indian and Northern Affairs Canada, and provides guidance relevant to mine design in Nunavut.

This report suggests that globally the average temperature may increase by about 2°C by 2100 due to global warming. However, the report also states that the increase may be double the global average for sites located at 50°N, and may be 3.5 times greater for sites located at 80°N. In a more recent study, the Intergovernmental Panel on Climate Change (IPCC, 2007) projected the maximum average air temperature to increase by 6.4°C by 2100 for a site located at 65°N latitude.

**Error! Not a valid bookmark self-reference.** presents a summary of reported climate change predictions used on a number of northern projects that have been reported in the engineering and scientific literature.

**Table 2.2**, a climate warming trend of 6.4°C over 100 years is considered to be a conservative upper estimate of the climate change rate for the mine area and is consistent with predicted and recommended climate change trends for projects in the north.

By the middle of the 21<sup>st</sup> century, the effect of temperature change is predicted to reduce near-surface permafrost by 12% to 15% once equilibrium conditions become established under the new temperatures. The predicted increase in active layer thickness of 15% to 30% will reach equilibrium relatively faster (NRC, 2004).

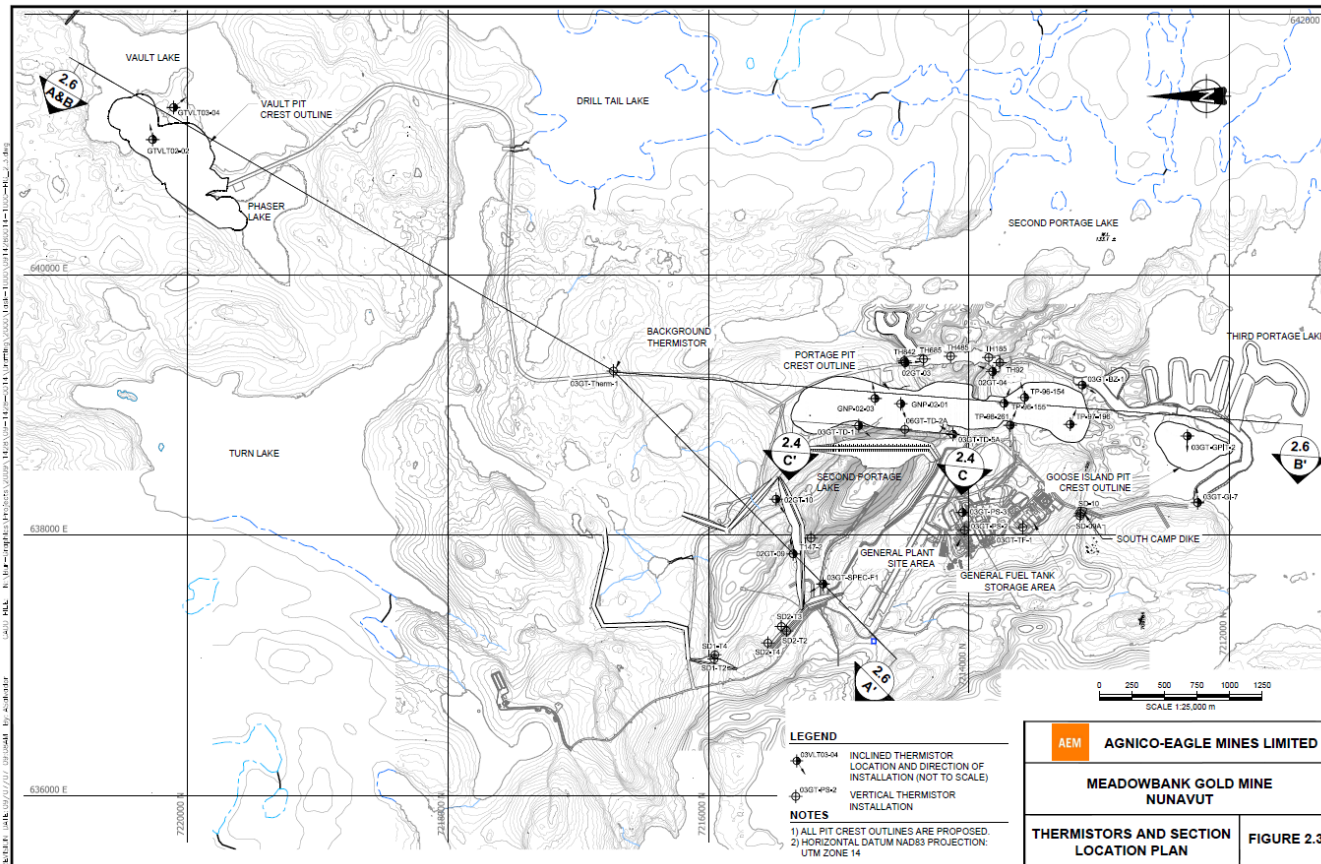
Studies indicate that the boundaries of discontinuous and continuous permafrost are expected to move northward due to global warming (Woo et al., 1992) (Figure 2-1). Predictions based on a warming of 4°C to 5°C over the next 50 years (NRC, 2004) (approximately double the rate predicted above) suggests that the Meadowbank site would remain within the zone of continuous permafrost, but the active layer thickness would be expected to increase, and the total thickness of permafrost may slowly reduce in time.





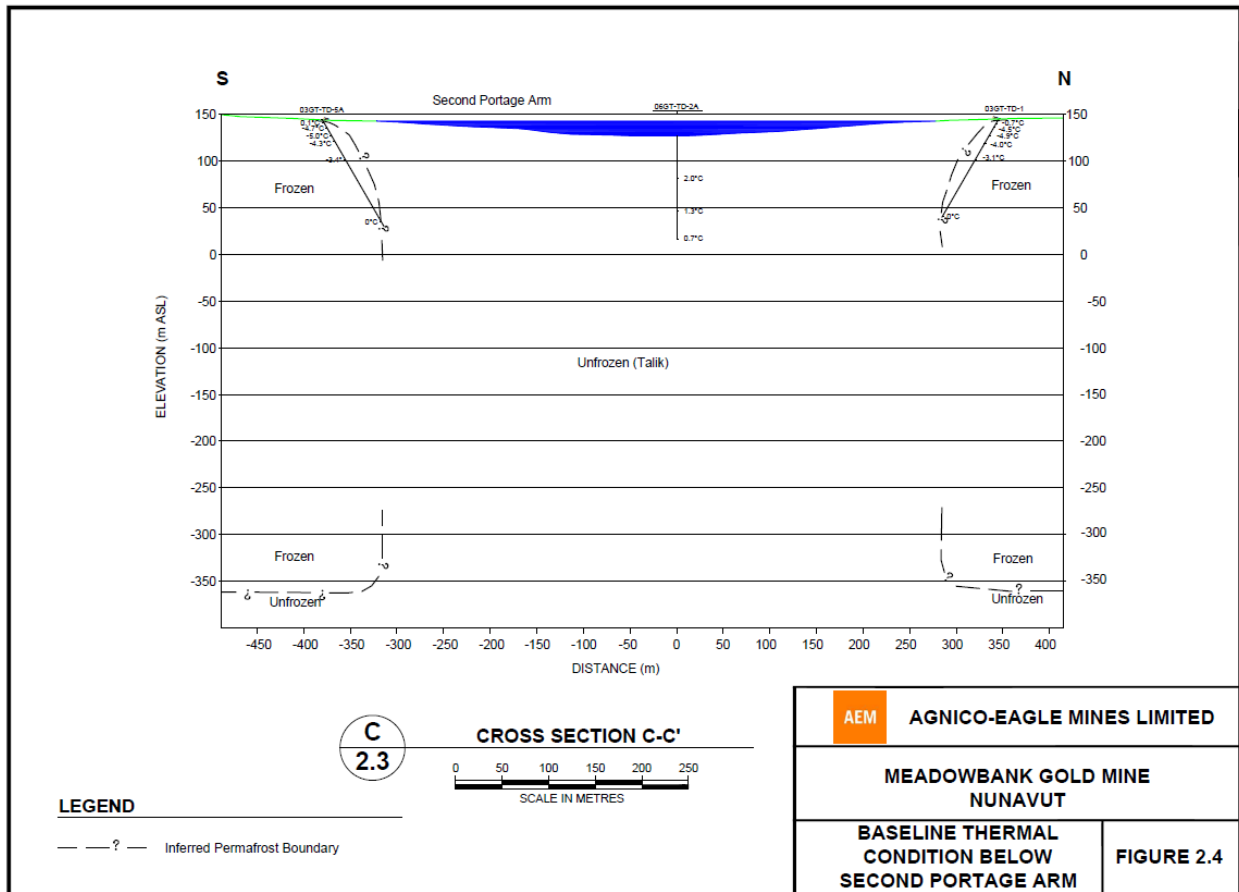
UPDATED MINE WASTE ROCK AND TAILINGS  
MANAGEMENT PLAN

Figure 2-3: Thermistors and Section Location Plan



Please note that some of the instruments presented on this figure are not in use anymore

Figure 2-4: Baseline Thermal Condition below Second Portage Arm





UPDATED MINE WASTE ROCK AND TAILINGS MANAGEMENT PLAN



Figure 2-5: Inferred Locations of Faults

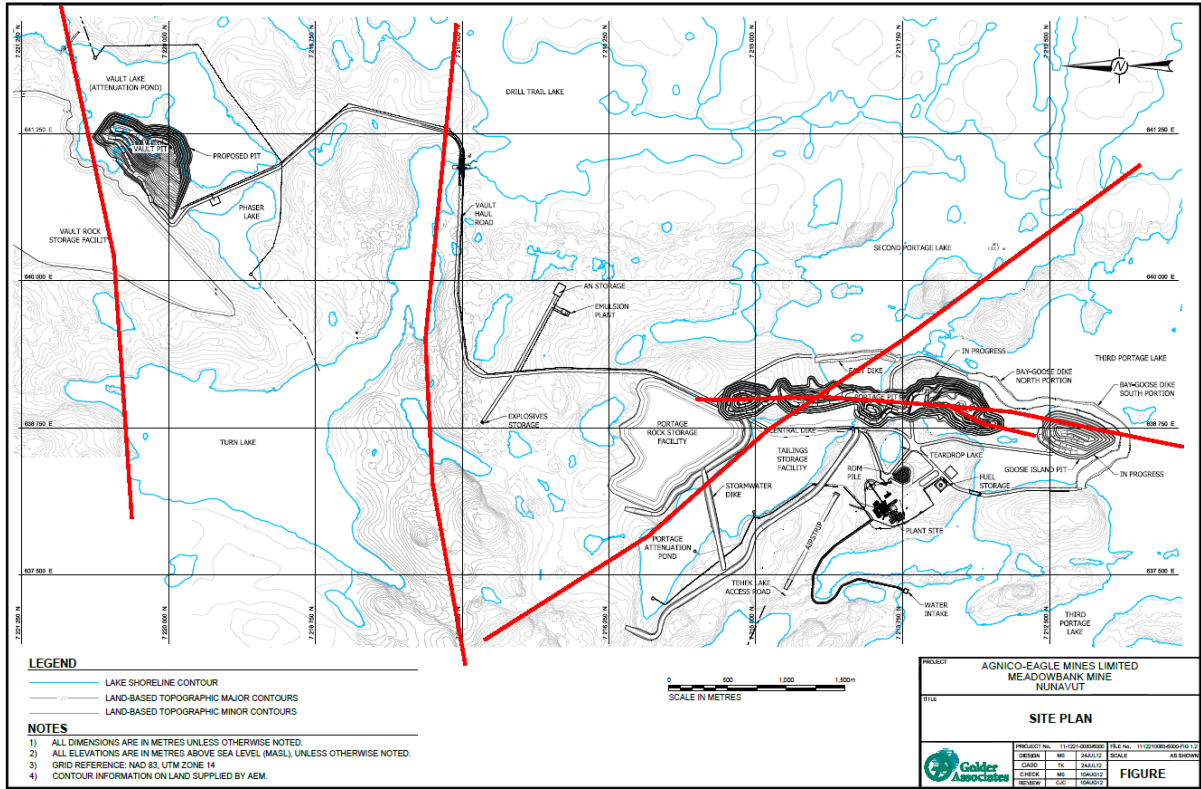
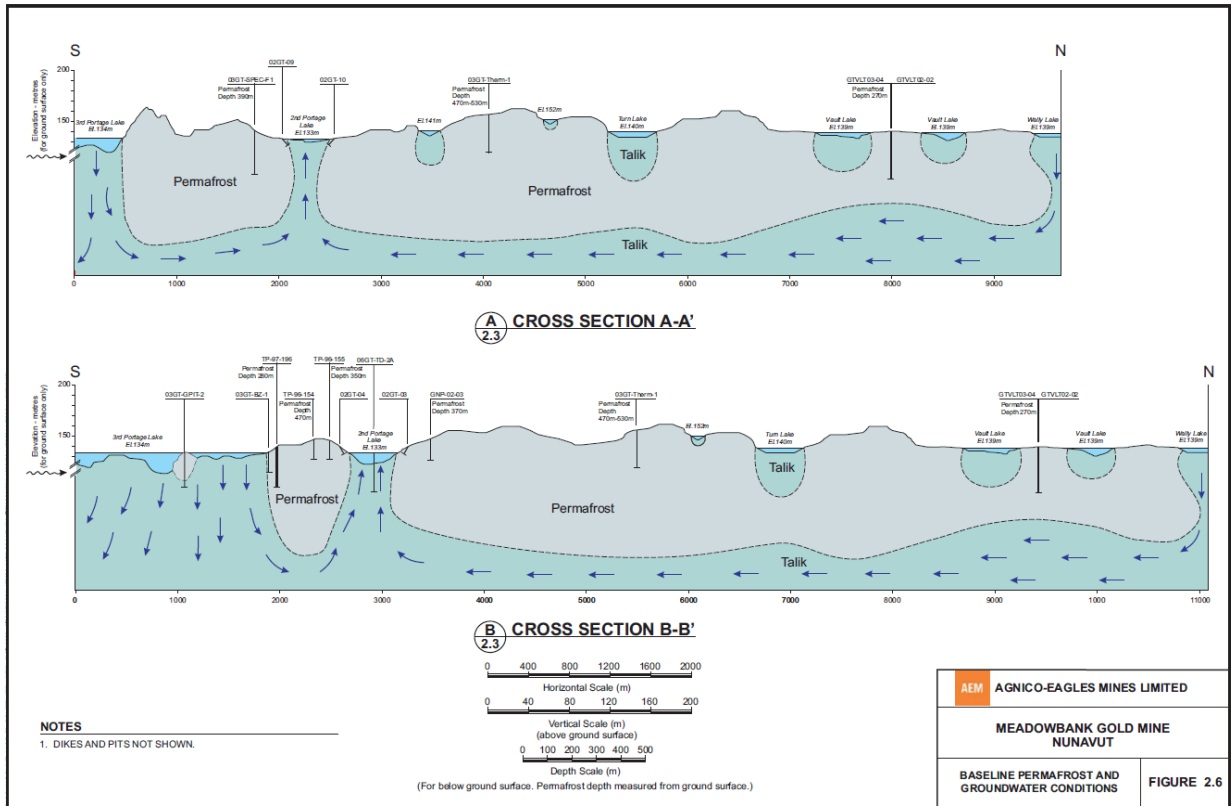


Figure 2-6: Baseline Permafrost and Groundwater Conditions





## UPDATED MINE WASTE ROCK AND TAILINGS MANAGEMENT PLAN

### 3 MINE DEVELOPMENT PLAN

---

#### 3.1 MINE WASTE PRODUCTION SEQUENCE

The current mine plan (2018) indicates that an approximate further 2.3 Mt of ore will be processed over a nominal remaining mine life of 0.75 years, including ore from pits and stockpiles. During this time, approximately 2.6 Mt of mine waste rock will be produced. At the end of the mine life, an approximate total of 29.9 Mt of tailings will be placed in the TSF, based on in situ tailings density.

The 2009, 2010, 2011, 2012, 2013, 2014, 2015, 2016 and 2017 material balances are presented in Table 3.1, Table 3.2, Table 3.3, Table 3.4, Table 3.5, Table 3.6, Table 3.7, Table 3.8 and

**Table 3.9**, respectively, with predicted remaining material balance presented in Table 3.10. This balance indicates the distribution of the following categories of materials by rock type:

- Mine rock for construction;
- Mine rock for dike construction;
- Mine rock for capping; and



## UPDATED MINE WASTE ROCK AND TAILINGS MANAGEMENT PLAN

- Mine rock to RSFs and Portage Pit fill.

Table 3.11 and Table 3.12, show the material destination distribution for the Meadowbank mine. Table 3.13 presents the NAG requirements and destination for closure.

NAG classified waste rock produced by pre-stripping and generic mining activities will be used for construction of the remaining mine infrastructure and dikes at the site, as it has been the practice to date. Based on current material balance calculations, sufficient quantities of suitable rock fill and till borrow materials will be available for construction, capping activities and closure/reclamation projects. The general mine development sequence is described in Section 3.2.



**UPDATED MINE WASTE ROCK AND TAILINGS  
MANAGEMENT PLAN**

**Table 3.1: Meadowbank Mined Tonnages for 2009**

	North Portage (Tonnes)			South Portage (Tonnes)			Total (Tonnes)
	Rock	Ore	Waste	Rock	Ore	Waste	
January	160,294	-	-	-	-	-	-
February	103,323	-	-	-	-	-	-
March	256,972	-	280	-	-	-	-
April	388,725	12,733	1,306	-	-	-	-
May	516,829	-	-	-	-	-	-
June	531,933	729	-	-	-	-	-
July	584,364	5,910	6,820	-	-	-	-
August	741,518	-	-	-	-	-	-
September	528,191	9,618	4,445	-	-	-	-
October	640,295	42,452	250	19,778	-	2,548	-
November	378,005	33,247	3,167	601,807	94,848	4,061	-
December	322,641	6,307	-	341,547	339,991	-	-
<b>TOTAL</b>	<b>**5,153,090</b>	<b>***110,996</b>	<b>*16,268</b>	<b>**963,132</b>	<b>***434,839</b>	<b>*6,609</b>	<b>6,684,934</b>
*Total Waste Rock Transferred to Waste Dump							22,877
**Total Rock Used for Construction Purposes (road, dikes, etc.)							6,116,222
***Total Ore							545,834



UPDATED MINE WASTE ROCK AND TAILINGS  
MANAGEMENT PLAN

Table 3.2: Meadowbank Mined Tonnages for 2010

	Portage Pit (tonnes)									Ore Processed in Mill (tonnes)
	Ore	Waste Rock								
		Dikes	Roads	Crushers	Waste Dump <sup>1</sup>	Landfill	Stockpiles	Other	Total	
January	97,446	223,842	190,281	156,162	173,736	-	-	-	744,021	-
February	43,979	281,368	46,654	123,727	359,649	-	32,298	1,295	844,991	47,745
March	75,333	503,299	107,635	-	197,125	23,540	-	-	831,599	163,399
April	116,940	258,416	63,100	171,451	428,814	-	-	6,196	927,977	176,857
May	136,444	258,481	10,019	148,576	672,724	-	-	50,073	1,139,873	177,610
June	152,606	534,039	24,748	126,155	401,748	-	-	12,632	1,099,322	215,389
July	236,768	471,106	176,169	127,379	237,095	-	-	-	1,011,749	193,422
August	225,467	493,626	506,385	168,085	115,930	-	-	-	1,284,026	215,559
September	272,675	503,624	606,044	161,673	214,866	5,621	-	-	1,491,828	227,502
October	232,888	235,924	595,322	56,337	461,627	53,522	-	-	1,402,832	198,394
November	247,401	3,813	104,087	8,991	963,805	-	-	-	1,080,596	218,260
December	323,641	-	299,167	8,991	1,118,767	-	-	-	1,426,925	214,400



MEADOWBANK GOLD MINE

UPDATED MINE WASTE ROCK AND TAILINGS  
MANAGEMENT PLAN

TOTAL	2,161,588	3,767,538	2,729,611	1,257,527	5,345,886	82,683	32,298	70,196	13,285,739	2,048,537
-------	-----------	-----------	-----------	-----------	-----------	--------	--------	--------	------------	-----------

1. Waste Rock disposed at the waste dump includes overburden stripped for exploitation of Portage Pit



UPDATED MINE WASTE ROCK AND TAILINGS  
MANAGEMENT PLAN

**Table 3.3: Meadowbank Mined Tonnages for 2011**

	Portage Pit (tonnes)									Ore Processed in Mill (tonnes)
	Ore	Waste Rock								
		Dikes	Roads	Crushers	Waste Dump <sup>1</sup>	Landfill	Stockpiles	Other	Total	
January	231,025	-	113,259	37,096	1,109,543	-	-	2,544	1,262,442	193,748
February	133,165	-	25,308	51,280	766,807	-	-	404	843,798	213,313
March	86,161	-	21,288	33,271	662,028	-	-	1,044	717,631	221,615
April	235,303	-	77,596	85,064	1,497,859	-	-	11,504	1,672,024	223,041
May	207,399	-	64,171	137,980	1,448,630	-	-	49,069	1,699,851	186,811
June	326,108	8,744	291,067	176,248	1,592,345	-	-	26,615	2,095,019	257,401
July	340,966	54,927	99,513	74,750	1,869,449	-	-	19,140	2,117,779	284,295
August	326,808	122,696	4,674	117,745	1,484,613	-	-	2,384	1,732,111	275,766
September	412,783	333,829	27,199	148,545	1,724,305	-	-	22,884	2,256,762	306,020
October	389,418	22,085	136,862	53,614	1,791,385	-	-	162,725	2,166,671	306,756
November	321,180	12,725	29,518	83,943	1,972,577	-	-	110,214	2,208,976	214,868
December	334,768	164,399	55,516	52,137	1,913,103	-	-	53,454	2,238,609	294,088





MEADOWBANK GOLD MINE

UPDATED MINE WASTE ROCK AND TAILINGS  
MANAGEMENT PLAN

<b>TOTAL</b>	<b>3,345,084</b>	<b>719,404</b>	<b>945,971</b>	<b>1,051,671</b>	<b>17,832,645</b>	<b>-</b>	<b>-</b>	<b>461,981</b>	<b>21,011,673</b>	<b>2,977,722</b>
--------------	------------------	----------------	----------------	------------------	-------------------	----------	----------	----------------	-------------------	------------------

1. Waste Rock disposed at the waste dump includes overburden stripped for exploitation of Portage Pit



UPDATED MINE WASTE ROCK AND TAILINGS  
MANAGEMENT PLAN

**Table 3.4: Meadowbank Mined Tonnages for 2012**

	Portage Pit, Goose Pit & Vault Pit (tonnes)									Ore Processed in Mill (tonnes)
	Ore	Waste Rock								
		Dikes	Roads	Crushers	Waste Dump <sup>1</sup>	Landfill	Stockpiles	Other	Total	
January	312,546	-	25,347	853	1,707,100	-	-	568,896	2,302,196	275,186
February	320,370	-	57,299	-	1,859,479	-	-	276,030	2,192,808	307,134
March	311,938	-	4,574	33,835	1,760,145	-	-	374,271	2,172,825	304,740
April	318,550	-	29,748	171,964	2,187,929	-	-	183,366	2,573,007	285,702
May	253,947	37,372	200,732	103,650	2,000,982	-	-	231,500	2,574,236	320,542
June	276,731	78,343	281,403	64,460	1,866,369	-	-	226,695	2,517,270	294,829
July	354,765	9,991	342,978	134,006	1,791,752	-	-	268,051	2,546,777	337,110
August	271,444	260,083	261,459	214,516	1,327,154	-	-	720,701	2,783,914	352,831
September	364,410	674,872	515,804	7,309	1,446,572	-	-	273,284	2,917,841	313,014
October	119,100	-	488,259	-	2,163,147	-	-	590,936	3,242,342	358,860
November	133,041	6,880	281,560	7,439	2,081,931	-	-	337,974	2,715,783	356,646
December	176,287	105,724	142,448	-	2,178,832	-	-	577,195	3,004,199	314,317



MEADOWBANK GOLD MINE

UPDATED MINE WASTE ROCK AND TAILINGS  
MANAGEMENT PLAN

TOTAL	3,213,129	1,173,266	2,631,610	738,031	22,371,392	-	-	4,628,899	31,543,198	3,820,911
-------	-----------	-----------	-----------	---------	------------	---	---	-----------	------------	-----------

1. Waste Rock disposed at the waste dump includes overburden stripped for exploitation of Portage Pit & Goose Pit



UPDATED MINE WASTE ROCK AND TAILINGS  
MANAGEMENT PLAN

Table 3.5: Meadowbank Mined Tonnages for 2013

	Portage Pit, Goose Pit & Vault Pit (tonnes)									Ore Processed in Mill (tonnes)
	Ore	Waste Rock								
		Dikes	Roads	Crushers	Waste Dump <sup>1</sup>	Landfill	Stockpiles	Other	Total	
January	184,536	-	14,052	531	2,486,541	-	-	222	2,501,346	320,729
February	196,802	-	61,036	8,913	2,495,018	-	-	-	2,564,967	329,709
March	311,380	1,520	58,325	393	2,691,265	-	-	294	2,751,797	368,323
April	271,823	317,845	79,530	77,730	2,071,408	-	-	82,810	2,629,323	309,458
May	336,532	269,930	51,645	-	2,299,765	-	-	29,650	2,650,990	363,625
June	249,724	397,170	252,710	153,310	1,443,285	-	-	494,975	2,741,450	355,498
July	330,024	54,525	16,010	111,360	2,234,897	-	-	340,655	2,757,447	368,058
August	316,136	-	92,460	145,385	2,824,875	-	-	125	3,062,845	321,294
September	307,532	-	61,465	5,940	2,774,724	-	-	98,255	2,940,384	357,595
October	353,697	-	33,470	-	2,504,101	-	-	188,000	2,725,571	377,118
November	282,046	-	35,365	-	2,637,689	-	-	-	2,673,054	300,779
December	299,298	-	18,490	-	2,073,386	-	-	125	2,092,001	370,655



MEADOWBANK GOLD MINE  
UPDATED MINE WASTE ROCK AND TAILINGS  
MANAGEMENT PLAN

TOTAL	3,439,530	1,040,990	774,558	503,562	28,536,954	0	0	1,235,111	32,091,175	4,142,841
-------	-----------	-----------	---------	---------	------------	---	---	-----------	------------	-----------

1. Waste Rock disposed at the waste dump includes overburden stripped for exploitation of Portage Pit & Goose Pit



UPDATED MINE WASTE ROCK AND TAILINGS  
MANAGEMENT PLAN

Table 3.6: Meadowbank Mined Tonnages for 2014

	Portage Pit, Goose Pit & Vault Pit (tonnes)									Ore Processed in Mill (tonnes)
	Ore	Waste Rock								
		Dikes	Roads	Crushers	Waste Dump <sup>1</sup>	Landfill	Stockpiles	Other	Total	
January	223,588	-	-	-	1,731,954	-	-	28,475	2,187,943	364,275
February	291,542	-	-	-	1,032,536	-	-	5,554	1,876,728	314,877
March	400,472	-	246	-	1,768,995	-	-	7,891	2,681,239	303,462
April	314,088	49,640	-	98,086	1,792,686	-	-	21,683	2,598,780	355,557
May	239,028	40,939	-	40,939	1,435,491	-	-	332,704	2,673,027	339,395
June	337,659	123,348	-	123,348	1,852,273	-	-	348,606	2,573,438	356,065
July	347,514	470,324	-	470,365	1,052,263	-	-	810,414	2,650,362	361,983
August	333,746	284,388	-	284,389	1,117,766	-	-	728,531	2,602,482	341,168
September	307,532	-	-	-	1,473,602	-	-	397,963	2,431,958	354,171
October	360,860	451	-	-	1,534,790	-	-	33,932	2,214,199	308,014
November	324,971	-	-	-	1,565,615	-	-	57,065	2,265,457	349,780
December	350,972	-	-	-	1,441,827	-	-	5,447	1,960,172	369,259



MEADOWBANK GOLD MINE  
UPDATED MINE WASTE ROCK AND TAILINGS  
MANAGEMENT PLAN

TOTAL	3,987,859	969,093	246	98,086	17,799,797	0	0	2,778,266	28,715,785	4,118,006
-------	-----------	---------	-----	--------	------------	---	---	-----------	------------	-----------

1. Waste Rock disposed at the waste dump includes overburden stripped for exploitation of Portage Pit, Goose Pit, & Vault Pit



UPDATED MINE WASTE ROCK AND TAILINGS  
MANAGEMENT PLAN

Table 3.7: Meadowbank Mined Tonnages for 2015

	Portage Pit, Goose Pit & Vault Pit (tonnes)									Ore Processed in Mill (tonnes)
	Ore	Waste Rock								
		Dikes	Roads	Crushers	Waste Dump <sup>1</sup>	Landfill	Stockpiles	Other	Total	
January	386,670	240	105,275	240	1,210,880	-	382,115	328,000	2,413,420	363,485
February	319,494	-	3,836	2,894	1,340,755	-	376,732	220,739	2,264,450	304,126
March	413,718	-	164,531	15,439	1,535,819	-	79,336	246,948	2,455,791	322,865
April	326,603	-	45,986	19,698	1,701,286	-	38,059	941,986	3,073,618	301,220
May	421,329	7,743	87,127	1,155	1,550,668	-	417,637	914,675	3,400,334	358,783
June	300,844	15,732	19,602	19,438	1,654,038	-	476,220	522,338	3,008,212	359,079
July	383,427	282,843	96,679	68,334	1,447,386	-	549,248	308,208	3,136,125	353,824
August	293,046	234,032	24,069	45,617	2,149,965	-	460,273	129,812	3,336,814	361,766
September	298,214	102,009	54,488	25,549	2,675,549	-	230,741	136,669	3,523,219	280,235
October	361,340	31,103	137,850	-	2,839,411	-	156,915	-	3,526,619	354,968
November	350,347	783	11,090	-	2,438,493	-	184,551	43,385	3,028,649	358,507
December	289,204	-	84,473	7,331	2,651,063	-	-	-	3,032,071	313,994





MEADOWBANK GOLD MINE

UPDATED MINE WASTE ROCK AND TAILINGS  
MANAGEMENT PLAN

TOTAL	4,144,236	674,485	835,006	205,695	23,195,313	-	3,351,827	3,792,760	36,199,322	4,032,852
-------	-----------	---------	---------	---------	------------	---	-----------	-----------	------------	-----------

1. Waste Rock disposed at the waste dump includes overburden stripped for exploitation of Portage Pit, Goose Pit, & Vault Pit



UPDATED MINE WASTE ROCK AND TAILINGS  
MANAGEMENT PLAN

Table 3.8: Meadowbank Mined Tonnages for 2016

	Portage Pit & Vault Pit (tonnes)									Ore Processed in Mill (tonnes)
	Ore	Waste Rock								
		Dikes	Roads	Crushers	Waste Dump <sup>1</sup>	Landfill	Stockpiles	Other	Total	
January	292,365	17,453	155,335	45,232	2,353,611	0	43,056	21	2,614,708	346,009
February	234,713	108,151	476,263	23,721	1,814,074	0	50,523	27	2,472,760	300,954
March	244,497	51,826	67,814	116,657	2,345,902	0	18,217	112	2,600,527	298,552
April	260,323	31,133	98,223	43,404	2,491,605	0	45,545	130	2,710,040	330,863
May	327,610	128,385	21,503	3,734	2,522,759	0	57,936	36,009	2,770,327	351,932
June	311,403	68,802	94,678	19,090	2,640,740	0	86,615	122	2,910,047	310,702
July	398,530	49,347	520	38,145	2,571,022	0	107,503	28	2,766,566	356,517
August	410,800	14,305	273,580	170,705	2,120,975	0	103,675	129	2,683,369	325,639
September	377,414	79,939	23,053	169,733	2,099,627	0	95,243	27	2,467,621	279,249
October	364,792		117,665	335	1,994,464	0	6,456	17	2,118,937	339,157
November	438,954	6,741	8,294	16,164	1,834,572	0	17,275	1,036	1,884,082	326,841



MEADOWBANK GOLD MINE

UPDATED MINE WASTE ROCK AND TAILINGS  
MANAGEMENT PLAN

December	370,247	17,092	346	17,786	1,544,266	0	23,590	165	1,603,246	348,687
<b>TOTAL</b>	<b>4,031,648</b>	<b>573,175</b>	<b>1,337,274</b>	<b>664,707</b>	<b>26,333,617</b>	<b>0</b>	<b>655,634</b>	<b>37,823</b>	<b>29,602,230</b>	<b>3,915,102</b>

1. Waste Rock disposed at the waste dump includes overburden stripped for exploitation of Portage Pit & Vault Pit



UPDATED MINE WASTE ROCK AND TAILINGS  
MANAGEMENT PLAN

Table 3.9: Meadowbank Mined Tonnages for 2017

	Portage Pit & Vault Pit (tonnes)									Ore Processed in Mill (tonnes)
	Ore	Waste Rock								
		Dikes	Roads	Crushers	Waste Dump <sup>1</sup>	Landfill	Stockpiles	Other	Total	
January	386,298	45,991	0	12,301	1,498,959	0	14,815	6	1,572,073	331,889
February	374,894	6,084	22,937	23,998	1,251,365	0	404,648	2,977	1,712,008	314,269
March	376,855	167	8,508	12,614	919,668	0	483,332	583	1,424,872	279,684
April	355,410	0	10,674	17,671	1,002,425	0	655,770	10	1,686,550	328,391
May	437,319	0	135,889	84,180	933,559	0	434,648	27,889	1,616,165	344,961
June	401,035	12,537	14,316	88,241	977,125	0	522,816	2,588	1,617,623	322,939
July	334,363	183,868	66,559	6,647	1,016,081	0	523,311	0	1,796,466	336,222
August	391,414	485,008	12,182	2,361	1,271,636	0	97,549	19,925	1,888,662	326,409
September	343,504	13,148	107,454	14,945	1,246,694	0	509,366	189	1,891,796	275,754
October	364,663	259,074	57,565	528	1,169,063	0	255,796	1,991	1,744,017	328,028
November	321,403	21,676	653	5,395	1,406,720	0	69,651	1,362	1,505,456	330,465



MEADOWBANK GOLD MINE

UPDATED MINE WASTE ROCK AND TAILINGS  
MANAGEMENT PLAN

December	352,291	0	401	571	1,781,334	0		7	1,782,313	334,023
<b>TOTAL</b>	<b>4,439,449</b>	<b>1,027,553</b>	<b>437,137</b>	<b>269,453</b>	<b>14,474,629</b>	<b>0</b>	<b>3,971,701</b>	<b>57,528</b>	<b>20,238,001</b>	<b>3,853,034</b>

1. Waste Rock disposed at the waste dump includes overburden stripped for exploitation of Portage Pit & Vault Pit

**Table 3.10: Projected Meadowbank Mined Tonnages (2018)**

		2018
Portage Pit	<b>Total Waste Rock (t)</b>	<b>169,392</b>
	<i>NAG (~ %)</i>	27%
	<i>PAG (~ %)</i>	73%
	Till (t)	0
	Ore (t)	98,622
Vault Pit	<b>Total Waste Rock (t)</b>	<b>1,464,113</b>
	<i>NAG (~ %)</i>	100%
	<i>PAG (~ %)</i>	<1%
	Till (t)	0
	Ore (t)	983,366
Phaser Pit	<b>Total Waste Rock (t)</b>	<b>941,121</b>
	<i>NAG (~ %)</i>	100%
	<i>PAG (~ %)</i>	<1%
	Till (t)	0
	Ore (t)	167,817

Note: Difference between pit mill feed and total mill feed is due to stockpiled material to be processed.

**Table 3.11: Meadowbank PAG Destinations & Tonnages (2018)**

	2018
Portage Rock Storage Facility (PAG Dump)	121,973
	26%
Portage Pit Fill	0
	0%
Central Dike	0
	0%
Stockpile Marginal Material <sup>2</sup>	78,045
	17%
Vault Rock Storage Facility (PAG) <sup>1</sup>	267,347
	57%
All PAG Destinations	467,365
	100%

1. PAG material from Vault, Phaser and BBPhaser will be sent to the Vault RSF. To prevent acid mine drainage potential, the relatively small expected volume of PAG material (small compared to the NAG that will be produced at the same time in Vault) will be capped with NAG waste rock as dumping proceeds.
2. Vault, Phaser and BBPhaser marginal and sub-marginal materials have been included in the "Stockpile Marginal Material" category.

**Table 3.12: Meadowbank NAG Destinations & Tonnages (2018)**

	2018
Portage Rock Storage Facility (NAG Dump)	0
	0%
Central Dike	0
	0%
Capping TSF (North Cell)	0
	0%
Saddle Dams	0
	0%
Goose NAG Dump <sup>2</sup>	0
	0%
Portage NAG Stockpile <sup>2</sup>	47,419
	2%
Other destinations <sup>2</sup>	0
	0%
Vault Rock Storage Facility (NAG) <sup>1</sup>	2,154,850
	98%
All NAG Destinations	2,202,269
	100%

1. NAG material from Vault, Phaser and BBPhaser will be sent to the Vault RSF. To prevent acid mine drainage potential, the relatively small expected volume of PAG material produced in Vault will be capped with NAG waste rock as dumping proceeds.
2. The Goose NAG dump, the Central dump NAG stockpiles, and the Portage NAG stockpile will also be used for NAG rehandling at closure.



**Table 3.13: NAG Stockpile for mine closure requirement, Destinations & Tonnages (2018 – 2019)**

	2018	2019	
Capping Portage Rock Storage Facility (PAG Dump) with NAG	1,157,318	0	<b>1,157,318</b>
	12%	0%	<b>8%</b>
Capping TSF (North Cell)	3,893,819	2,973,625	<b>6,867,444</b>
	39%	56%	<b>45%</b>
Capping TSF (South Cell)	2,880,737	2,364,450	<b>5,245,187</b>
	29%	44%	<b>34%</b>
Central Dike	0	0	<b>0</b>
	0%	0%	<b>0%</b>
Saddle Dams	0	0	<b>0</b>
	0%	0%	<b>0%</b>
Primary Crusher NAG capping	465,234	0	<b>465,234</b>
	5%	0%	<b>3%</b>
Goose Rock Garden/Finger Dikes (fish habitat compensation)	256,945	0	<b>256,945</b>
	3%	0%	<b>2%</b>
Stormwater Dike Capping	350,064	0	<b>350,064</b>
	3%	0%	<b>2%</b>
Capping Marginal Dump	642,600	0	<b>642,600</b>
	6%	0%	<b>4%</b>
NAG Stockpiles	376,093	0	<b>376,093</b>
	4%	0%	<b>2%</b>
All Portage NAG to be Stockpiled	10,022,810	5,338,075	<b>15,360,885</b>
	100%	100%	<b>100%</b>



### 3.2 MINE DEVELOPMENT SEQUENCE (2018)

The general sequence of mine development over the operating life is listed in Table 3.14 and illustrated in



UPDATED MINE WASTE ROCK AND TAILINGS  
MANAGEMENT PLAN

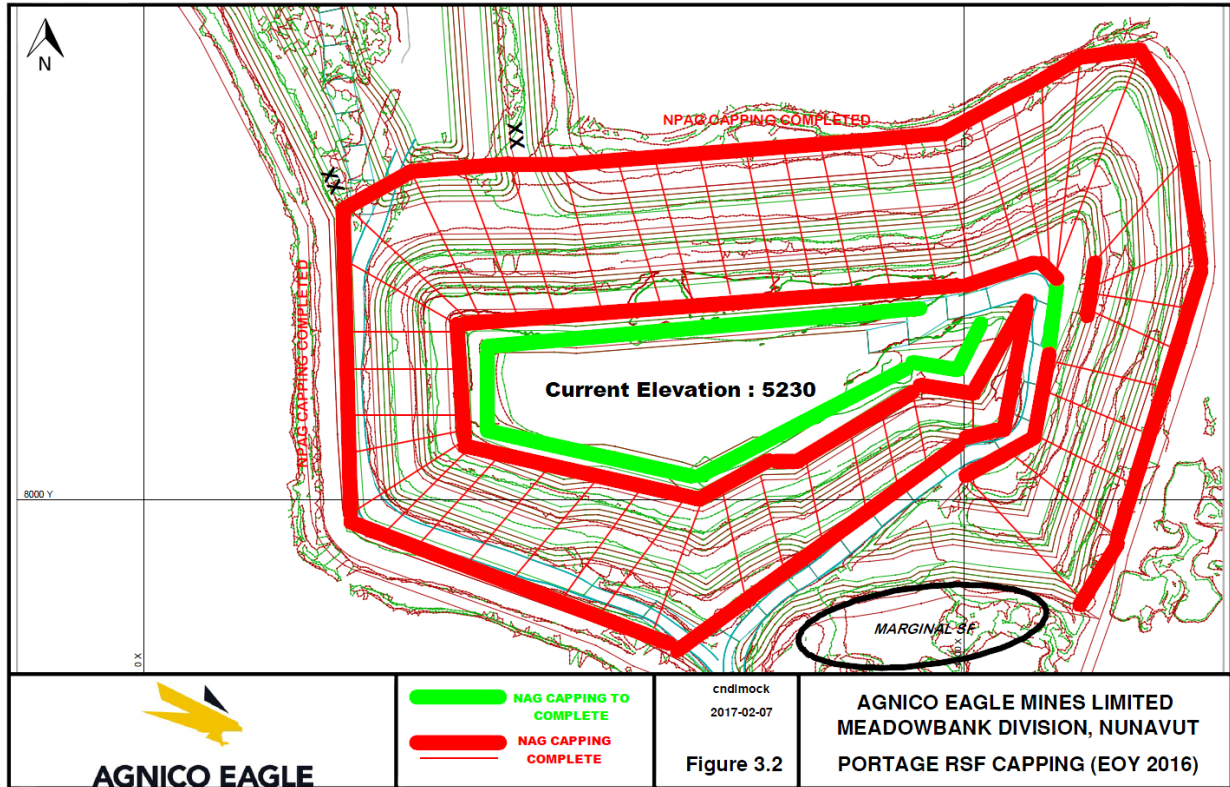
, Error! Reference source not found., Error! Reference source not found., and Figure 3-3. A conceptual sequence of pit development over the life of mine is illustrated in Figure 3-5.

**Table 3.14: Mine Development Sequence**

Fig. No.	Year	Items
<p><b>Error! Reference source not found. and Figure 3-3</b></p>	<p>2018-2019</p>	<ul style="list-style-type: none"> <li>- Continue TSF deposition at the South Cell until mill closure towards end 2018.</li> <li>- South Cell Reclaim Pond pumped to Process Plant for use as make-up water during operations.</li> <li>- Advance and complete mining of North and South Portage, and Vault Pits.</li> <li>- Continue mining of Phaser and BBPhaser Pits in 2018.</li> <li>- Vault Pit waters directed to Vault Attenuation Pond during operations.</li> <li>- Monitor water quality within Vault Attenuation Pond, decanting excess to Wally Lake through Vault WTP (if required). To date the WTP has not been required as Vault Attenuation Pond meets MMER and Water License discharge criteria.</li> <li>- Anticipated completion of phase 1 and phase 2 of North Cell TSF capping during 2017-2020.</li> <li>- Initiate final closure plans activities including capping of crusher pad and reclamation of temporary NAG stockpiles.</li> <li>- Goose inflows, freshet and possible Bay-Goose dike seepage in flow used for natural Goose re-flooding.</li> <li>- Commence flooding of Portage and Vault Pits in 2018 and 2019 respectively.</li> <li>- Runoff from Vault RSF is directed to Vault Attenuation Pond.</li> <li>- Runoff from Portage Rock Storage Facility and Landfill directed to South Cell Reclaim Pond. Seepage collected at ST-16 (PRSF) is pumped to North Cell TSF and transfer to South Cell.</li> <li>- Plant site and airstrip runoff to be directed to Stormwater Management Pond before discharge of excess to TSF.</li> <li>- Reclaim Pond water may be treated (2018 only), if required, and will be transferred to Portage Pit to assist with re-flooding late in 2018 (see Water Management Report and Plan in appendix of the 2017 Annual Report).</li> <li>- Monitor water quality within flooded pits, treating in-situ, if required.</li> <li>- Continue construction of finger dikes for fish habitat (preliminary placement of waste rock on ice at specified locations in Third Portage Lake).</li> </ul>
<p><b>Figure 9-1</b></p>	<p>Closure</p>	<ul style="list-style-type: none"> <li>- Completion of TSF capping.</li> <li>- Dismantling of buildings and Mill.</li> <li>- Completion of capping of Portage RSF over the landfill area.</li> <li>-</li> <li>- Construction of fish habitat structures (Finger Dikes/Goose Rock Garden/re-grading of pit fill surface).</li> <li>- Environmental and water quality monitoring.</li> <li>- Breach dewatering dikes (Bay Goose and South Camp Dikes) once pit lake water quality meets CCME criteria for the Protection of Aquatic Life or site specific criteria, as required by the Water License.</li> </ul>



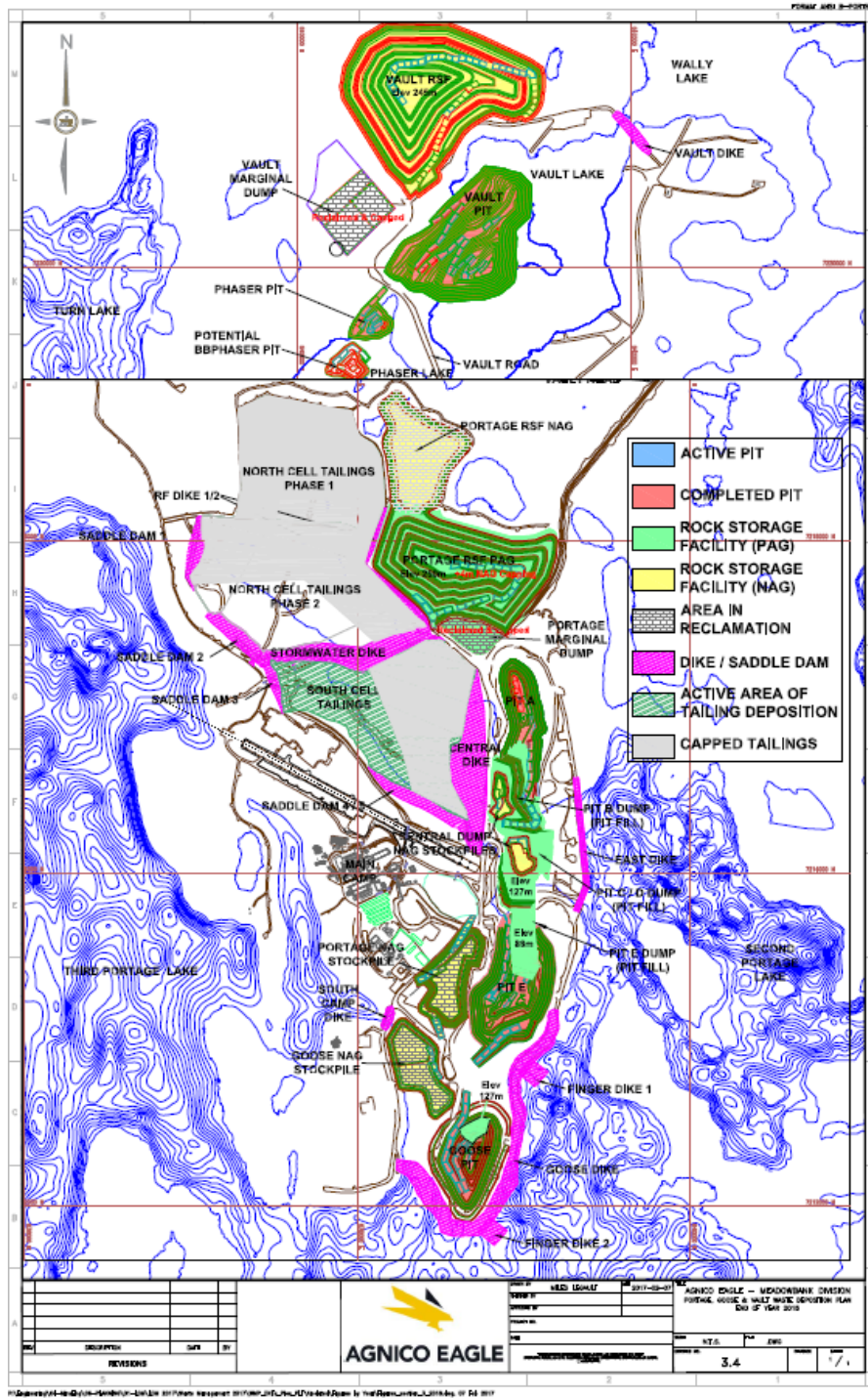
**Figure 3-2: Current Status (EOY2017 ) Capping Portage Rock Storage Facility with NAG**





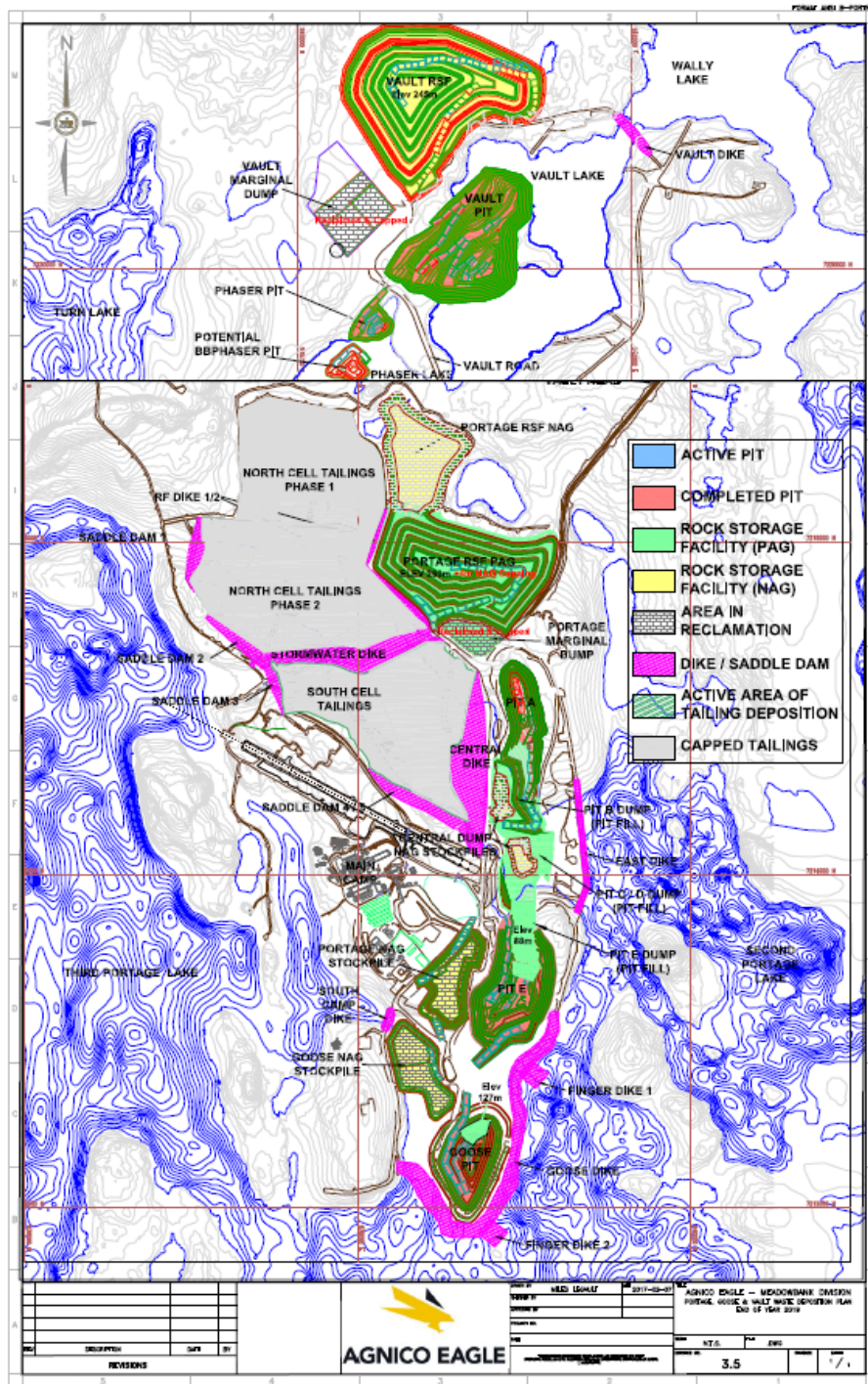
UPDATED MINE WASTE ROCK AND TAILINGS  
MANAGEMENT PLAN

Figure 3-3: Development Sequence Year 1 (2018)

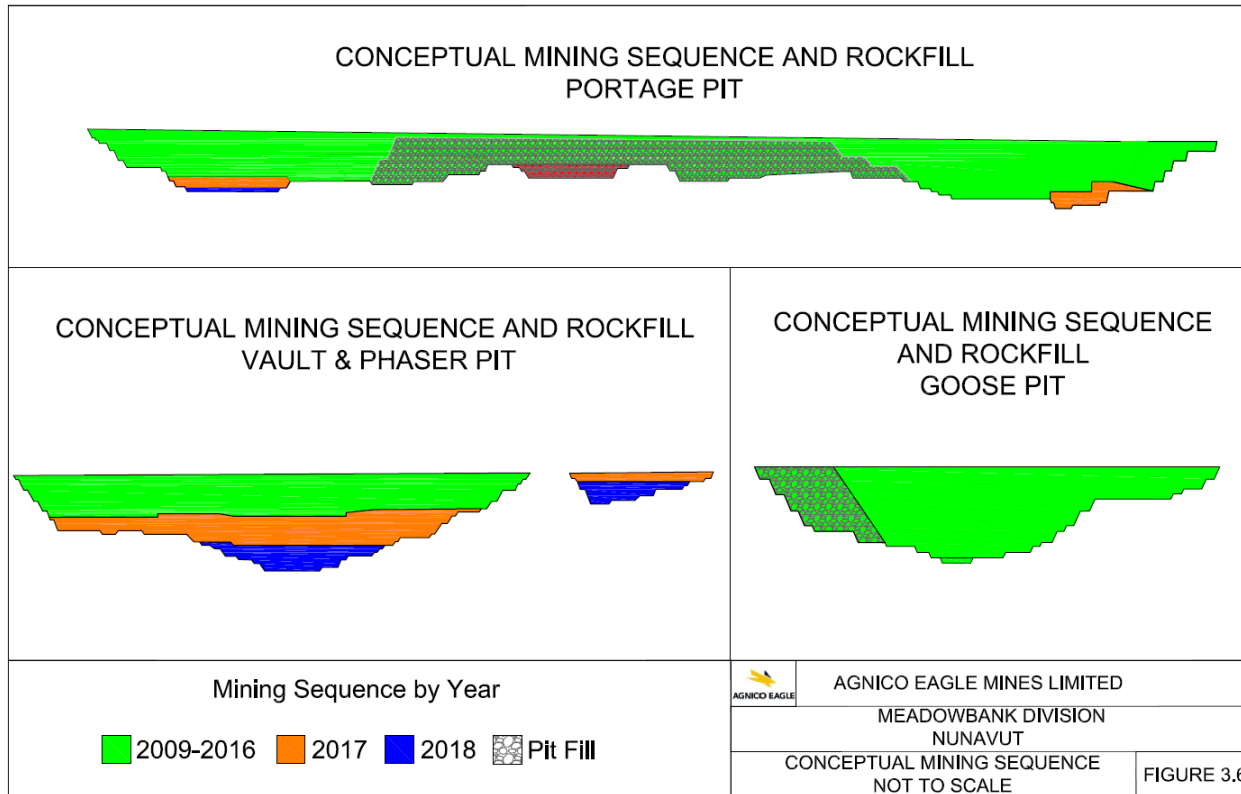


UPDATED MINE WASTE ROCK AND TAILINGS MANAGEMENT PLAN

Figure 3-4: Development Sequence Year 2 (2019)



**Figure 3-5: Conceptual Mining Sequence (Life of Mine)**







## UPDATED MINE WASTE ROCK AND TAILINGS MANAGEMENT PLAN

### 4 CONTROL STRATEGIES FOR ACID ROCK DRAINAGE IN COLD REGIONS

---

The generation of metal leachate in acidic drainage is a concern for mining projects. In evaluating the potential control strategies for the disposal of the mine waste at the Meadowbank Gold Mine, consideration was given to control strategies that are effective in cold regions. A discussion of the alternative control strategies considered for the Meadowbank Gold Mine is summarized below.

Common control strategies for the prevention or reduction of acid mine drainage in cold regions are:

1. Control of acid generating reactions;
2. Control of migration of contaminants; and
3. Collection and treatment.

In assessing the overall control strategies for the Meadowbank Gold Mine, emphasis has been placed on methods that satisfy (1) and (2) in the above list, which then has an impact on (3) by potentially reducing the requirements for these activities. Table 4.1 presents various acid mine drainage control strategies.

The Meadowbank Gold Mine is located within the zone of continuous permafrost, and has a mean annual air temperature of about -11.1°C. Based on thermal data collected from the site since 1996, the mine area is underlain by permafrost to depths between 450 and 550 m. In developing the Mine Waste Management Plan, freeze control and climate control strategies have been adopted.

Freeze control strategies rely on the immobilization of pore fluids to control acid mine drainage reactions, and the potential migration of contaminated pore water outside of the storage facility. The climate conditions at the Meadowbank Gold Mine site are amenable to freeze control strategies, and hence should be taken advantage of. In addition to immobilization of pore fluids, permafrost can reduce the hydraulic conductivity of materials by several orders of magnitude. Consequently, freeze control strategies are effective methods for reducing the migration of contaminants through materials.

According to Dawson and Morin (1996), freeze control strategies can only be effective if sufficient quantities of non-potential acid generating (NAG) waste rock are available for use as a cover and insulation protection. Based on the production forecast schedule for the Meadowbank Gold Mine, there will be sufficient NAG rock available to provide cover over the Portage RSF and TSF.



**UPDATED MINE WASTE ROCK AND TAILINGS  
MANAGEMENT PLAN**

**Table 4.1: Acid Mine Drainage Control Strategies of the Arctic**

Strategy	Tailings	Waste Rock
Freeze Controlled	Total or perimeter freezing options can be considered. Can freeze up to 15 m annually if freezing in thin layers. Freezing rate decreased proportionately with depth. Process chemicals could cause high unfrozen water content.	Requires considerable volumes of non-acid waste rock for insulation protection. Better understanding of air and water transport through waste rock required for reliable design.
Climate Controlled	May not be a reliable strategy for saturated tailings.	Requires control of convective air flow through waste rock, infiltration control with modest measures and temperature controls. Better understanding of waste rock air, water, and heat transport for reliable design.
Engineered Cover	Special consideration for freeze-thaw effects. Availability and cost of cover materials are major impediments.	
Subaqueous Disposal	Special considerations for winter ice conditions and pipeline freeze-up.	Very difficult to dispose of waste rock beneath winter ice.
Collection and Treatment	Costly to maintain at remote locations Long term maintenance cost.	
Segregation and Blending	Tailings are normally geochemically homogeneous.	May be very effective. Research and development on-going.

**Reference:** (MEND 1.61.2, 1996)

Climate control strategies rely on cold temperatures to reduce the rate at which oxidation occurs. The low net precipitation in permafrost regions limits infiltration of water into waste rock and tailings disposal areas. Consequently, the climate of the Meadowbank Gold Mine area will act as a natural control to reduce the production of acid mine drainage and metal leachate. Climate control strategies are best applied to materials placed at a low moisture content to reduce the need for additional controls on seepage and infiltration. This strategy is considered to be effective for waste rock, but not tailings. Therefore, the arid climate at the Meadowbank Gold Mine is also suited for climate control strategies for use with the RSFs.

Research activities have been undertaken since 2014 in collaboration with the Research Institute Mines and Environment (RIME) to optimize the control strategies to be used in Meadowbank Gold Mine for the RSF's and the TSF's. Thermistors are installed in the Portage RSF and TSF North Cell to monitor thermal behavior. NAG capping trial pads were constructed in 2014 and 2015 in the TSF North Cell to determine the effectiveness of different cover thicknesses and designs over tailings.

UPDATED MINE WASTE ROCK AND TAILINGS  
MANAGEMENT PLAN



Additional instruments have been installed within the RSF in 2015 and within the TSF in 2016 and in 2017. Additional instrumentation is planned to be installed in the TSF during the remaining period of operation.



## UPDATED MINE WASTE ROCK AND TAILINGS MANAGEMENT PLAN

### 5 OVERBURDEN MATERIALS

---

#### 5.1 LAKE BOTTOM SEDIMENTS

The lakebed consisted of soft, fine-grained sedimentary deposits, referred to as lake bottom sediments that are underlain by till or other soil materials, and then bedrock. The thickness of lake bottom sediments was variable and ranged from a few centimeters up to 10 meters or more, as suggested by geophysical surveys and information obtained from various drilling programs and construction activities.

The sediments present underneath the footprint of the Stormwater Dike and the coffer dam (constructed within the upstream limit of the Central Dike footprint) were removed prior to the construction. The sediments at the bottom of the core of the dewatering dikes were removed during the excavation of their main and center trenches. A portion of the sediments present in the footprint of Portage Pits were removed as part of pre-stripping activities.

The remaining sediment present in the footprint of Portage Pit and the sediments of Goose Pit were removed as part of pre-stripping activities. The sediments present underneath the footprint of Central Dike were removed prior to construction; good quality material can be used for construction stages.

The sediment removed for the Dewatering Dikes, TSF Dikes, Goose Pit, the Portage Pits were sent to Portage RSF or within designated areas in the mine footprint and North Cell capping areas.



**UPDATED MINE WASTE ROCK AND TAILINGS  
MANAGEMENT PLAN**

**Table 5.1: Estimate of Lake Bottom Sediment Volumes**

Construction Year	Estimated Volumes Excavated (m <sup>3</sup> )
2011	107,771
2012	207,500
2013	31,500
2014	104,698
2015	83,277
2016	49,254
2017	85,869
Total Excavated	669,869
Remaining volume (including Central Dike and SD 3-4-5 raise at El. 150m) (m <sup>3</sup> )	46,051
Total including material excavated and remaining (m <sup>3</sup> )	715,920

## 5.2 TILL

The remainder of the overburden materials on site consists of well graded till or till-like materials with alluvial deposits of silt and sand intermixed. The till and till-like materials is generally described as a silty sand/gravel. It contains cobble and boulder-sized particles with an average of 30 to 40% silt and clay sized particles. Some of the till or till-like material has been and will continue to be used in the construction if further raise of TSF perimeter dikes/dams are required; with the balance placed in the RSFs. Till placed in the RSFs will be mixed with the waste rock. The average till thicknesses throughout the Mine area varies based on location and may be from zero to upwards of 18 m.



## UPDATED MINE WASTE ROCK AND TAILINGS MANAGEMENT PLAN

### 6 MINE WASTE ROCK

Waste rock from the open pit mines, not used for site development purposes, has been and will be trucked to one of the two Waste Rock Storage Facilities (RSFs) until the end of mine operations. From 2017 to 2018, approximately 36% of the PAG waste rock generated from the Portage and pits (mining ceased at Goose Pit in early 2015) will be placed within the mined out areas of Portage and Goose Pits. This PAG material will become submerged as the pit is flooded (subaqueous disposal) and is considered as fish habitat compensation in accordance with AEM's DFO authorization. Any material not able to be placed within the Portage and Goose Pits as pit fill will be trucked to the Portage RSF.

Due to the distance between the Portage mining area and the Vault mining area, two separate waste rock storage facilities are required. Waste rock from the Portage and Goose Pits is stored in a storage facility located near to these pits (Portage RSF or Mined out areas of Portage and Goose Pits), while waste rock from the Vault, Phaser and BBPhaser Pits will be stored in a separate storage facility adjacent to the Vault Pit (Vault RSF).

#### 6.1 WASTE ROCK PROPERTIES

The quantities of waste rock excavated between 2009 and 2017 are summarized in Table 3.1, Table 3.2, Table 3.3, Table 3.4, Table 3.5, Table 3.6, Table 3.7, Table 3.8 and Table 3.9, respectively. The quantities of waste rock to be excavated in the open pits in 2018 are summarized in 3.10. The estimated quantities to be stored in each of the RSFs and other destinations are summarized in Table 6.1.

**Table 6.1: Quantities of Waste Rock by Destination**

Destinations (RSF and others)	Rock Type	Quantity*
Portage RSF	Waste Rock (about 19% of NAG)	73.5 Mt**
Portage Pit Filling	Waste Rock (about 100% of PAG)	14.7 Mt
Construction	Waste Rock (NAG)	25.0 Mt
Tailings Capping	Waste Rock (100% of NAG)	16.8 Mt
Rock Garden	Waste Rock (about 100% of PAG)	0.3 Mt
Goose NAG Dump	Waste Rock (100% of NAG)	4.5 Mt
Vault RSF	Waste Rock (about 95% of NAG and 5% PAG)	60.0 Mt

\*The quantities have been adjusted as the loose density assumption changed from 2.15 to 2.04.



## UPDATED MINE WASTE ROCK AND TAILINGS MANAGEMENT PLAN

\*\* The maximum quantity of PAG is realized at the end of mine life. The maximum quantity of NAG is realized at the end of 2018 (before the start of reclamation). The figure reported here reflects the maximum quantity at any one time which is reached at the end of 2016. Quantities also include NAG capping.

### 6.2 WASTE ROCK FACILITY MANAGEMENT

As stated, waste rock will be deposited at the applicable RSF as well as within the Portage Pit and in the Goose Pit. The waste types that report to the RSFs show variable ARD potentials, some of which require control measures. Based on the results of thermal modelling, it is expected that the material within the RSFs will freeze within two years of placement (BGC, 2004). As stated previously the perimeter of the Portage RSF has been capped with 4m of NAG and the top will be covered in the same manner at closure.

Waste rock deposition plans for the Portage and Vault RSF's are shown on



UPDATED MINE WASTE ROCK AND TAILINGS  
MANAGEMENT PLAN

, **Error! Reference source not found.**, Figure 3-3. Placement of waste rock within the Portage RSF commenced closest to the Portage Pit and has progressed westward over the entire footprint, then upward to further benches during the development of the mine. Placement of waste rock within the Vault RSF has commenced closest to the Vault Pit and will generally proceed in a northward direction, rising upward as pit development progresses.

As noted previously a further ARD control measure, the Portage RSF will be capped with a minimum of 4-m thick cover of NAG rock. This capping is continually ongoing around the perimeter as parts of the RSF reach their limits. To date, approximately 86% of the Portage RSF has been covered. The final top capping will be completed at closure. The depth of cover was selected based on thermistor data and thermal modelling which indicates the depth of thaw (active layer depth) to be on the order of 1.5 m. The cover material would be coarse to allow the development of convective cooling during winter, and insulation through trapped air within voids during summer. Given the high evaporation rate and low annual average precipitation at the site, the average annual precipitation infiltration into the pile is expected to be low. Additional instrumentation was installed within the RSF in 2015 and further study analysis and thermal modelling will be performed to assess the performance of the RSF NAG capping and to understand the thermal behavior of the RSF. It is possible that additional capping will be required to accomplish effective encapsulation and thus the prevention of the potential thawing of ARD material. Details of the Portage RSF will be presented in the Final Closure and Reclamation Plan.

Most of the waste rock (approximately 84%) from the Vault deposit is NAG and water quality modeling concluded that the Vault RSF is not expected to require capping. As a precautionary measure, any PAG material encountered at Vault is and will be placed in the middle and be capped with NAG waste rock as dumping proceeds.

As for the Phaser and BBPhaser Pits, the total quantity of waste rock is projected to be 3.0 MT which would all be contained within the Vault RSF as it is currently designed. The waste rock from these small pits is similar to Vault Pit waste rock – primarily NAG.

**6.3 WASTE ROCK STORAGE DIMENSIONS**

Table 6.2 summarizes the overall (final) physical dimensions and aspects of the Portage and Vault RSFs.

**Table 6.2: Details of Rock Storage Facilities**

Descriptors	Portage Rock Storage Facility	Vault Rock Storage Facility
-------------	-------------------------------	-----------------------------





## UPDATED MINE WASTE ROCK AND TAILINGS MANAGEMENT PLAN

Approximate storage volume	39.3 Mm <sup>3</sup>	29.1 Mm <sup>3</sup>
Approximate final crest elevation	254 m	246 m
Approximate final height	100 m	80 m
Maximum elevation of adjacent topography	192 m	190 m
Approximate footprint area	80.8 ha	61.0 ha

### 6.4 PORTAGE ROCK STORAGE FACILITY EXPANDED AREA

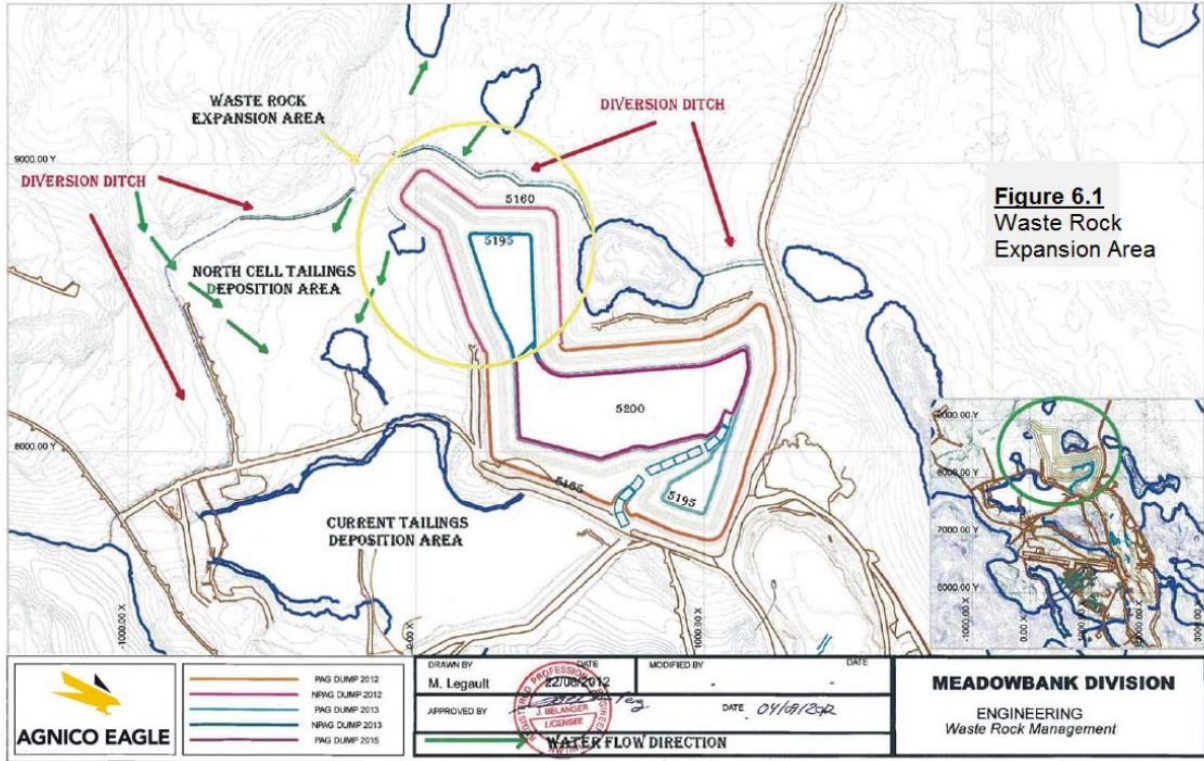
In 2012, AEM decided to revise the Portage rock storage facility (RSF) footprint which resulted in a temporary expansion from the original area of the Waste Storage Facility from 63 ha to 80.8 ha (Figure 6-1). The expansion was necessary due to the absence of sufficient area within the RSF for the storage of NAG material. The deposition of waste rock within the RSF must be completed according to strict engineering stability principles. NAG could not be stored in the storage area design previous to 2012 as the upward progress of deposition, combined with the volume of NAG generated on a day-to-day basis, would have resulted in a large volume of NAG to be covered with PAG material as and when it was produced. Reclamation of NAG for construction/capping projects then becomes difficult. The NAG material is valuable as it is used for onsite construction materials and will be required at closure for capping purposes.

The current RSF design volume is similar to the original 2009 design; the deposition pattern has however changed to allow for the separate, temporary NAG material storage area discussed above. The expansion is still within the original mine footprint and all runoff is directed to the TSF or the South Cell. The diversion ditch system further prevents any watershed freshet from reaching the RSF mitigating any potential contamination. In 2016, 2 collection ponds were constructed (WEP 1 and WEP 2) to collect any contact water runoff from the NAG extension. Since then, they were directed to the ST-16 sump and pumped back to the North Cell TSF (See Water Management Plan in appendix of the 2017 Annual Report).

This design change was considered a minor revision and the 2012 Waste Rock Management Plan references this. Reclamation activities during closure will return the area affected by the temporary NAG expansion to as near original conditions as possible.

#### ***Figure 6-1: Waste Rock Expansion Area***

UPDATED MINE WASTE ROCK AND TAILINGS  
MANAGEMENT PLAN





## UPDATED MINE WASTE ROCK AND TAILINGS MANAGEMENT PLAN

### 7 TAILINGS MANAGEMENT

---

Tailings are the processed material by-product of the gold recovery process. Tailings are processed through a cyanide destruction circuit, then pumped to the Tailings Distribution Box, and then deposited in the Tailings Storage Facilities – North and South Cells (TSF).

The TSF is divided by the Stormwater Dike into the North and South Cells. The North Cell is currently delimited by the Saddle Dams 1 and 2 as well as two rockfill road structures (RF1 and RF2). All those structures of the North Cell are presently at final El.150m. Tailings deposition ceased in 2015 to maximum elevation 149.5masl. The pond will be maintained at a maximum of El.148m (to allow a 2 meter freeboard of water) until emptied for capping completion. During that time, a pumping station located on the North Cell reclaim road is and will continue to be used to complete the required transfers of excess run off accumulation from the North to the South Cell.

The South Cell is currently delineated by Saddle Dam 3, Saddle Dam 4, Saddle Dam 5 and the Central Dike will all reach their final elevation of El.145m by the end of summer 2018. Saddle Dams 3,4 and 5 were raise from 137 to 145masl in 2017 and central Dike will be raise 2m in summer 2018 to raise all structures to their final elevations of 145masl. Structures' elevation to 143masl is required to store the presented LOM scenario, however, AEM targets 145masl to allow for potential additional capacity and they need to be constructed for summer 2018. Central Dike will be raise 2m to match Saddle Dams at 145masl by the end of summer 2018. The Central Dike embankment was completed to El.115m in 2012 and, to El.120m in 2013, to El. 132m in 2014, to El. 137m in 2015 and to El. 143m in 2016. A liner (LLDPE) is installed on the upstream surface of the dike up to El. 143m.

Tailings deposition began in February 2010, in the North Cell, and was switched to the South Cell (former Portage Attenuation pond) on November 22<sup>nd</sup> 2014 and continued to July 1<sup>st</sup>, 2015. During that time, the first phase of North Cell capping occurred. Deposition switched back in the North Cell during summer 2015 to finalize the beach profile for closure. Deposition was then switched back to the South Cell on October 28<sup>th</sup>, 2015. Currently the reclaim pond is located in the South Cell and this water is recycled to the mill as process water.

#### 7.1 TAILINGS PROPERTIES

Properties of the tailings relevant to the design of the TSF are presented in Table 7.1.

**Table 7.1: Relevant Data for Tailings Storage Facility**

Property	Value
Mine design life	0.75 yrs
Mill production (solids)	Approx. 8,440 tpd
Total rock processed (including In pit Reserves)	30.6 Mt <sup>(1)</sup>
Goose Pit (In pit Reserves)	0 Mt
Vault and Phaser Pits (In pit Reserves)	1.2 Mt
Vault Pit (Ore mined)	10.9 Mt
Portage and Goose Pits (Ore mined)	18.3 Mt
Portage Pit (In pit Reserves)	0.1 Mt
Average specific gravity for ore	3.1 t/m <sup>3</sup>
Assumed Porosity	30%
Assumed in situ density in TSF (yearly average)	1.33 t/m <sup>3</sup> <sup>(2)</sup>
Volume of tailings in TSF, NC & SC at the end of 2017	14.17 and 8.08 Mm <sup>3</sup>

<sup>(1)</sup> Total processed ore quantities differ from total mined ore quantities summarized in section 3 due to changes in cut off grades, resulting in conversion of waste tonnes to ore tonnes in stockpiles

<sup>(2)</sup> Measured annual average of 2017 in the South Cell, varies through time because of ice entrapment

Processed tailings slurry volumes, pumped from the Mill to the TSF, and associated properties for 2017 are presented in



MEADOWBANK GOLD MINE  
UPDATED MINE WASTE ROCK AND TAILINGS  
MANAGEMENT PLAN

*Table 7.2.*



## UPDATED MINE WASTE ROCK AND TAILINGS MANAGEMENT PLAN

**Table 7.2: 2017 Processed Tailings Volume and Associated Properties**

	Total Tailings Slurry (tonnes)	Density of Tailings (% solid)	Density of Slurry (tonnes / m <sup>3</sup> )	Tailings Placed in TSF (m <sup>3</sup> )
January	576,575	57.6%	1.608	358,464
February	520,796	60.3%	1.650	315,701
March	469,335	59.6%	1.636	286,892
April	552,885	59.4%	1.625	340,262
May	584,262	59.0%	1.622	360,285
June	551,697	58.5%	1.621	340,443
July	564,514	59.6%	1.620	348,371
August	560,116	58.3%	1.605	348,984
September	463,408	59.5%	1.634	283,629
October	544,003	60.3%	1.640	331,640
November	570,480	57.9%	1.607	355,079
December	588,177	56.8%	1.577	372,901
<b>TOTAL</b>	<b>6,546,247</b>			<b>4,042,652</b>

### 7.2 TAILINGS MANAGEMENT STRATEGIES

Due to the arid climate and permafrost environment, tailings are disposed of in a manner that encourages total freezing as a control strategy. Given the length of time that water at the site is ice covered, sub aqueous disposal is preferred. The objective is to allow the tailings to be frozen in layers in order to maximize the total frozen thickness. It is anticipated that the tailings will eventually become encapsulated by permafrost; thus limiting oxygen diffusion and water infiltration into the tailings, seepage from the tailings, and the generation of acid mine drainage.

The TSF was designed in two cells in order to allow tailings management in smaller areas with shorter beach lengths reducing the amount of water that is trapped and permanently stored as ice. Operation in cells also allows progressive closure, cover trials, and cover construction. Cover trials were performed in the North Cell in 2014 and 2015, with North Cell cover construction occurring in



## UPDATED MINE WASTE ROCK AND TAILINGS MANAGEMENT PLAN

2015 to 2017 and more construction is expected in the upcoming years. Cover trials and North Cell cover construction were ongoing while tailings deposition continued in the South Cell.

Tailings deposition started in the North Cell (2010) and was done from the perimeter dikes and rockfill structures. The primary objective was to build tailings beaches to keep the pond away from the dikes and rockfill structures; especially prior to the freezing period to protect the liner against ice build-up, and to prevent or limit any seepage out of the TSF. This deposition strategy also facilitated the reclaim pond management that ensured an adequate supply for re-use in the mill.

Once deposition switched to the South Cell in November 2014, Stormwater Dike became an internal dike; dividing the North Cell from the South Cell. Any seepage from the Stormwater Dike (none evident to date) is expected to flow to the South Cell.

The tailings deposition plan in the South Cell has resulted in the development of a tailings beach starting on the upstream slope of the Central Dike and progressively advancing northwest, away from the Central Dike and Portage Pit. This will force potential seepage pathways away from Central Dike and its foundation materials. Despite this, a seepage has developed and was first observed in 2014 at the downstream toe of Central Dike. AEM is managing the seepage by pumping the water accumulating at the downstream toe of Central Dike back to the South Cell. Some seepage water has also been transferred to Goose Pit in 2015 and 2017. AEM has continued to build the beach in this area in 2017. The seepage flow has diminished as a result since its implementation. Additional details on Central Dike seepage are available in the Water Management Plan in the appendix to the 2017 Annual Report.

### 7.3 TAILINGS RECLAMATION

The design of the cover for the North Cell and South Cell has been developed in 2015 and 2016. The design is still in progress and the final design will be presented in the Final Closure and Reclamation Plan. The ultimate goals for reclamation of the TSF are to mitigate long-term environmental effects to the aquatic receiving environment and to establish a landform similar to that of the natural surrounding area. Conceptual cover system designs previously modelled (Golder, 2008) and presented in the interim closure plan (Golder, 2014) rely on aggradation of the tailings material into the surrounding permafrost to limit the production of Acid Mine Drainage (AMD) and the movement of contaminants through surface and groundwater. The construction of a cover system consisting of non-acid generating granular material (NAG) over the tailings material ensures that the active layer (material going through freeze-thaw cycles, overlying permafrost) remains within the benign material. The objectives of the cover system are to maintain the tailings material below 0°C under most conditions and to maintain saturation above 85%.



## UPDATED MINE WASTE ROCK AND TAILINGS MANAGEMENT PLAN

To achieve the goals and criteria for the reclaimed TSF, the final design prepared will consist of a landform that promotes water shedding from all surfaces covered by an engineered cover system. The final design for the engineered cover system is a layer of compacted NAG waste rock (soapstone) with a minimum thickness of 2.0 m. The design was developed as a result of soil-plant-atmospheric (S-P-A) modelling, as well as thermal and seepage modelling. The nominal cover thickness over most of the landform is well over the minimum, and up to 8.0 m in the thicker portions. This thickness variation is required to obtain the designed landform. Cover material is used to build up the landform because the tailings material displays a low angle of deposition and its frozen state makes it difficult to re-handle economically. Tailings material, beneath the minimum 2.0 m thick cover, appears to remain frozen for all years (excluding the warmest years) from the 100-year database, accounting for climate change. The unfrozen tailings are segregated in the upper 0.5 m of the TSF and remain above 85% saturation, thus reducing the risk of oxidation until the material freezes back into the permafrost over time.

The final landform consists of two watersheds in the North Cell, each one having its own outlet, and one landform for the South Cell. Around half of the North Cell area discharges through a first outlet in a sump and ditch at the North leading to 3PL. The second outlet discharges via a spillway to the lower South Cell cover. From this point, this water is mixed with the South Cell watershed going through a sump and ditch system in such a way that water is drained from both covers, in line with closure requirements. Design objectives are to minimize cover material volumes and tailings excavation by taking advantage of the tailings surface and balancing the required excavation and cover system material volumes. Several scenarios were prepared on both the North Cell and South Cell to minimize rockfill volumes and the most optimal ones were chosen.

Facility minimum slope angle for the cover surface is 1%. Water is moved off the cover using a surface water management system consisting of grading the plateau areas towards engineered surface runoff drainage channels. The runoff drains have a minimum slope of 0.5%.

The surface water management plan for the reclaimed TSF is to minimize erosion, thus reducing suspended sediment loading to the receiving environment, and to safely convey runoff water in the event of a storm event coupled with spring snowmelt. To achieve this, the surface water management system will be constructed using riprap-lined drainage channels and riprap-lined aprons at the outlet of each catchment. It should be noted that run off water will be directed to the South Cell or to the Portage Pit until it meets criteria for direct discharge to Third Portage Lake. This is discussed in the 2017 Water Management Plan available in appendix of the 2017 Annual Report.





## UPDATED MINE WASTE ROCK AND TAILINGS MANAGEMENT PLAN

Once the North Cell and South Cell TSF reclaim ponds will be dewatered, the migration of seep water into the talik beneath the North Arm of Second Portage Lake can only occur by diffusion. Diffusive transport is calculated to require more than  $1 \times 10^6$  years for 1% of the initial constituent concentration to reach the deep regional groundwater system. The rate of advance of the freezing front into the talik beneath the 2PL is therefore expected to exceed the rate of advance of diffusive transport, eventually encapsulating any constituents. Thermistors within the North Cell indicate the tailings are freezing progressively.

During operations, the cells (North or South) into which tailings are be deposited will initially (early operation) be a local groundwater discharge area as the water level in the tailings will be below Second Portage Lake. As the Portage Pit is excavated however, it may become a regional hydraulic sink in the area. Any seepage into the talik beneath the tailings area could be directed towards the Portage Pit where it will be captured during the open pit operations and redirected back to the TSF. Groundwater monitoring is conducted to confirm or determine if the tailings management strategy is working. Details on groundwater monitoring are available in the Groundwater Monitoring Report in appendix of the 2017 Annual Report.

The proposed reclamation plan for the TSF, which will be finalized and presented in the Final Closure and Reclamation plan, is designed to be essentially maintenance free over the long term. During the post-closure period, the tailings are predicted to freeze with time, resulting in permafrost encapsulation.

### 7.4 TAILINGS FREEZEBACK AND SEEPAGE

The primary purpose of placing a cover system on the North Cell TSF is to mitigate long-term environmental effects due to runoff, seepage, erosion, or direct contact with the waste. From the determined closure objectives, design criteria for the closure of the North Cell of the TSF were developed. Design criteria specific to the cover system design include:

#### Tailings Material Temperature

- The tailings material placed within the North Cell should be entirely frozen after a period of 10 years following completion of the capping (frozen defined as tailings temperature  $< 0^{\circ}\text{C}$ ).
- The freezing front should continue at depth into the lake bed sediments and the bedrock underlying the North Cell, thus eliminating the talik currently in place. The time required for this phenomenon to take place will be determined from modelling and is to be corroborated by monitoring of ground temperatures following closure.



## UPDATED MINE WASTE ROCK AND TAILINGS MANAGEMENT PLAN

- The tailings are to remain frozen for a period of over 150 years following closure, taking into account the agreed-upon climate change scenario. This will be based on modelling and monitoring of ground temperatures following closure of the facility.
- Ground temperature monitoring should be conducted for a minimum of ten years following closure of the TSF and data compared to the modelled scenario. Model parameters are to be adjusted based on monitoring data and future ground temperature predictions refined.
- For 90% of the TSF surface area, the active layer shall remain within the constructed NAG cover system and the underlying tailings material shall remain frozen for a warm year event with a return period of 1 in 100 years, accounting for the climate change scenario.
- In areas where the active layer extends into the tailings material, the thawed layer should be limited to the upper 30 cm of the tailings mass and saturation of the tailings should remain above 85% to limit oxidation of the tailings.

### Tailings Material Saturation

- As an additional method to reduce tailings reactivity, the degree of saturation within the tailings mass should remain above 85%. This will reduce the tailings reactivity should part of the upper region of the tailings mass thaw during a warm year event.

Modeling of tailings freezeback and contaminant transport was carried out in 2015 to estimate the performance of the permafrost encapsulation cover system design. Numerical models were carried out in both one and two-dimensions. The 2D numerical model utilized a cross section profile of the entire North and South TSF, as well as the eventual pit lake, in order to accurately estimate the subsurface thermal and flow regimes. To develop reasonable lower boundary conditions for the 2D models, deep 1D models were completed first.

Additional modelling work will be completed as part of the TSF final cover design in the next years. AEM is planning installing new thermistors over the North Cell to increase data collection and update the model in the upcoming years. Results of the modelling and the cover design will be provided in the Final Closure and Reclamation plan for Meadowbank site.

### **7.4.1 Monitoring of Tailings Freezeback**

During the development and mining of the deposits, an adaptive management plan has been implemented with respect to monitoring of the TSF. The Thermal Monitoring Plan (TMP) is presented in detail in Section 8 of this document.



## UPDATED MINE WASTE ROCK AND TAILINGS MANAGEMENT PLAN

The monitoring program for the TSF will provide the data required to validate the predictions of freezeback within the tailings and support the cover design. If it is determined by monitoring during operations that the tailings are freezing at lower rates than predicted, then mitigation procedures would be implemented. AEM has implemented the Thermal Monitoring Program. Results to date indicate that the Tailings in the North Cell are freezing. No instruments are installed for now directly in the tailings in the South Cell; installation will be planned after South Cell operations.

During the operational phase, a number of test pads have been developed to assess various cover designs, and to determine the most appropriate design for the actual site conditions. Such an approach has been used previously at northern mines such as Nanisivik. Four test pads have been constructed on the TSF North Cell since 2014, in collaboration with the Research Institute on Mines and the Environment (RIME).

Once capping on the tailings with NAG will be completed, a specific monitoring program will be developed and implemented. The objectives of the TSF North and South Cell cover systems and landforms are to ensure long-term landform stability, encourage TSF freeze-back into the surrounding permafrost, and maintain either subzero temperature or a high degree of saturation (>85%) in the tailings at all times. The purpose of the performance monitoring system is to ensure that these objectives are met. The objectives of the TSF cover system performance monitoring program will be:

- To monitor the temperature profile through both the tailings and the cover system to verify that the tailings beneath the cover system remain below freezing for most of the year and to verify that the tailings and talik are freezing into the surrounding permafrost;
- To monitor the water content of the tailings below the cover system and understand the basic water content response at the base of the cover; and
- To monitor settlement, consolidation, sediment loss and progression of erosion features on the landform.

As indicated before, the tailings will also be covered with a minimum 2-m thickness of NAG rockfill, which will provide an alternative and preventive strategy for the management of the TSF in the event that permafrost develops more slowly than predicted.

### 7.4.2 Monitoring of Tailings Seepage

Following dewatering of 2PL Arm and during investigations and construction of the TSF perimeter dikes several investigative procedures are used to identify the location and hydraulic properties of



## UPDATED MINE WASTE ROCK AND TAILINGS MANAGEMENT PLAN

faults that are inferred to be present beneath the North Arm of 2PL including mapping of exposed bedrock, and packer testing in boreholes.

The results of the investigations are used to locate monitoring wells and thermistors that are and will be installed within the dikes, and between the Central Dike and crest of the Portage Pit. Thermal data is monitored to evaluate seepage from the TSF and freezeback of the TSF, and of the Central Dike, Saddle Dam and Rockfill perimeter containment foundations. In addition visual inspections are performed regularly and an annual geotechnical inspection is undertaken by a third party engineering consultant.

- If monitoring indicates flow rates and water qualities of concern, then mitigation measures would be undertaken. Collection of any seep water will be required for pumping it back to the TSF's. The potential mitigation action would be dependent on observed flow rates and water quality data;
- If, during monitoring, it is found that the freezeback of the dike and tailings deposit are occurring at a rate less than predicted, then enhancement by artificial freezing methods (i.e. thermosiphons) may be considered.

Refer to the 2017 Water Management Plan and Report for details on the Central Dike seepage and to the Tailings Storage Facilities OMS Plan for seepage monitoring and mitigation actions, both included in the 2017 Annual Report.

### 7.4.3 Requirements for Sumps and Seepage Pump Back

Seepage collection systems are planned downstream of the TSF dikes, saddle dams and rockfill structures as a contingency against seepage. Seepage collection systems consist of trenches and sumps located immediately downstream of the TSF dikes (and Waste Rock Storage facilities). Seepage reporting to the sumps is to be pumped back over the dike into the TSF. Seepage pump back rates will be monitored and recorded as a measure of dike or rockfill performance. The seepage collection system has been constructed where required during operations. Additional structures could be constructed in operations or at closure if required as contingency against seepage.

In 2013 seepage was detected in a sump location on the North side of the Portage RSF (PAG). It was later determined that the source was the North Cell TSF reclaim water that had ponded against the rockfill structure adjacent to the Portage RSF. This water migrated under the Portage RSF and discharged to the sump location. Corrective measures (installation of a till plug, increased pumping, the installation of 4 additional thermistors to assist in monitoring freezeback in the RSF, installation of filter material and geotextile installation along the rockfill structures RF1 and RF2) were



## UPDATED MINE WASTE ROCK AND TAILINGS MANAGEMENT PLAN

undertaken to prevent migration of contaminants to Lake NP-2 (2013, 2014). A report, including recommendations, was prepared by Golder (Jan, 2014). The Freshet Action Plan includes water quality sampling, monitoring and continued pumping of this seepage area. This Plan is updated yearly and included in the appendix of the 2017 Water Management Plan. AEM has implemented the Golder recommendations to control the seepage at the RSF.

In November 2014 upon the start of the South Cell deposition and water reclaiming, an unpredicted rise in piezometers levels downstream of Central Dike was observed. This rise was recorded as having the same rate of rise as the South Cell reclaim pond thus indicating a possible seepage beneath the Central Dike structure through the dense till foundation layer and fractured bedrock. Golder was advised and issued a revision of the seepage model of their design. The chain of events, investigations results and action plan is detailed in the 2017 Water Management Plan and Report. AEM will continue thorough monitoring of the situation and implement corrective measures if needed. This area is included as a sampling location in accordance with the Water License (STS-5). The seepage is contained on site and excess volumes are pumped back to the South Cell TSF.

### 7.5 TAILINGS DEPOSITION PLANNING

The main components of the TSF are illustrated in Figure 7-1 and the general operation of the TSF facilities will follow the sequence laid out in the Tailings deposition plan presented in the Appendix 1. The estimated storage capacity of the tailings storage facilities, Reclaim Pond, and total basin capacity are shown on Figure 7-2 .

As mentioned above, the general operational management strategy for the TSF involved discharging tailings into the North Cell of the TSF to a maximum elevation of 149.5m. The North Cell is filled up to its final capacity as the final tailings deposition was completed in October 2015. The reclaim system was put in place in the South Cell in October 2014. While the South Cell is in operation, the North Cell is allowed to freeze, and progressive reclamation and NAG capping was initiated in winter 2015 and continued in 2016 and 2017. Water is transferred from the North Cell to the South Cell in summer to maintain required freeboard. The tailings are capped with rockfill placed first in the northern sector of North Cell and working towards Stormwater Dike. The North portion on the North Cell was capped in 2015 and a 30m strip was placed in front of RF1 and RF2 in 2016. North Cell capping activities continued in 2017. After mining is completed and the operation of the South Tailings Cell is completed, capping of the South Cell will commence.

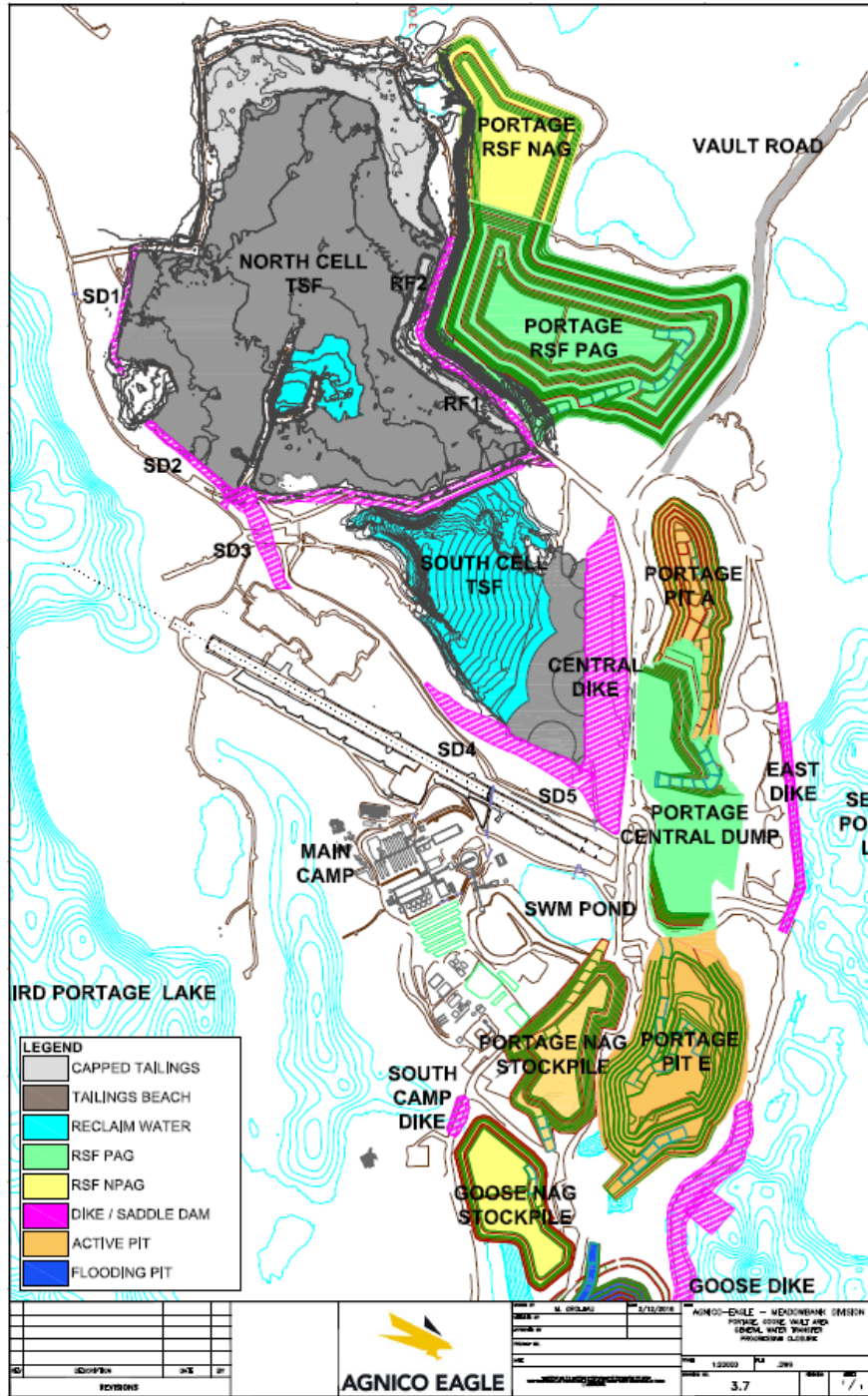
An updated operational detailed tailings deposition plan is completed and available in Appendix 1 of this report. The strategy of the deposition planning process is as follows:



## UPDATED MINE WASTE ROCK AND TAILINGS MANAGEMENT PLAN

- Define a deposition sequence based on proposed dike alignments with sufficient capacity to store the life of mine tailings plus a contingency while maintaining the required setback from the Portage Pit;
- Define a deposition sequence that allows the cells to be partitioned (Stormwater Dike) to facilitate the lake dewatering sequence, construction of the Central Dike, and to allow a portion of the TSF to be operated as an attenuation pond for at least 3 years and to diminish ice entrapment negative effects. This has been completed as the Central Dike is constructed to elevation 143m, which is final for the current Life of Mine;
- Define a deposition sequence that maintains a reclaim pond with sufficient depth for efficient operation of the reclaim pumping system while minimizing pond volume as TSF operation best practices;
- Define a deposition sequence that maintains beaches on the upstream faces of perimeter dikes, Stormwater Dike, Central dike, all associated Saddle Dams and peripheral rock fill structures;
- Define a deposition sequence to operate in cells to reduce beach length to more efficiently operate in cold conditions to minimize ice entrapment;
- Define the staged construction schedule for the dikes so that adequate freeboard (2.0m) is maintained within the impoundment and that the deposition sequence does not interfere with the dike's construction;
- Define a deposition sequence that creates a tailings surface that will require the minimum earthworks during closure and if possible will allow covering of some portion of the tailings surface during operations;
- Define a deposition and water transfer sequence that creates a tailings surface that will require the minimum earthworks during closure and if possible will allow covering of some portion of the tailings surface during operations;
- Define a deposition sequence that promotes freezing of the tailings during the operating period; and;
- Define a deposition sequence that can close certain areas of the TSF faster in order to promote rockfill capping during operation.

Figure 7-1: Tailing Storage Facility Main Components

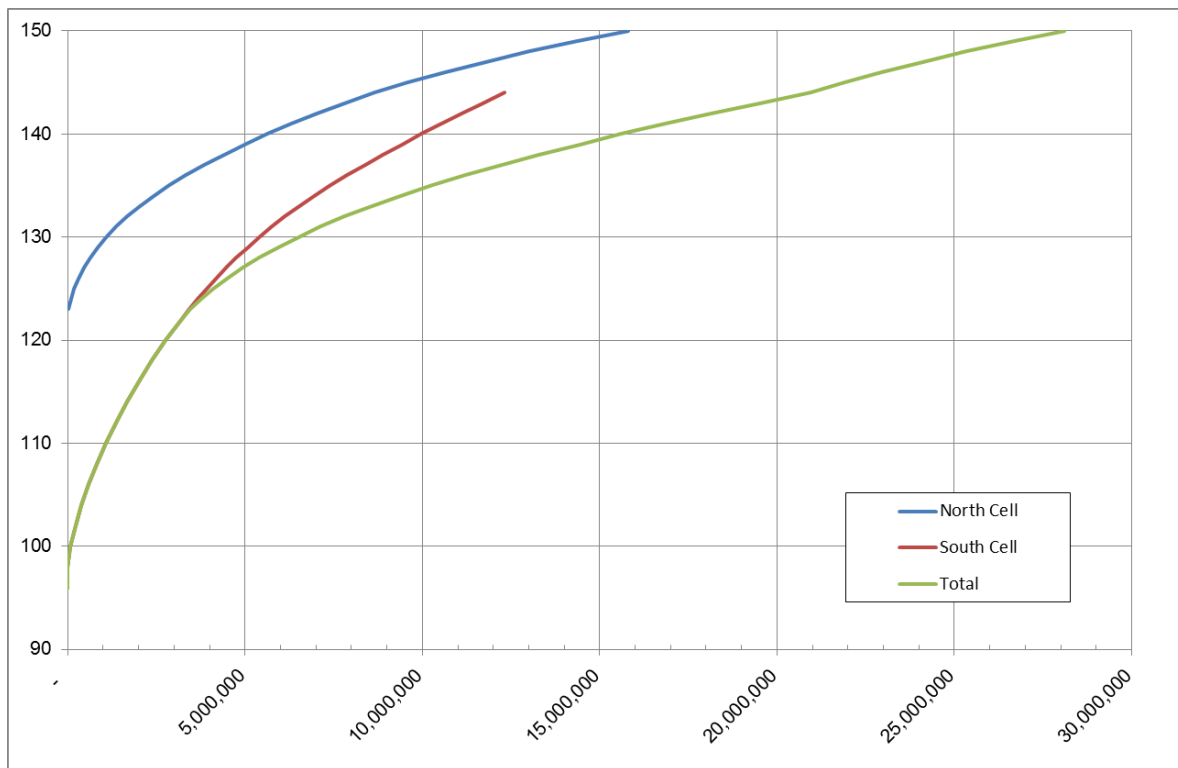






As mentioned above, the general operational management strategy for the TSF involves discharging tailings into the North Cell of the TSF to a maximum elevation of 149.5m. Now that the North Cell is filled up to its final capacity, a reclaim system was put in place in the South Cell in 2014 to continue depositions within the strategy outlined above. While the South Cell is in operation, the North Cell will be allowed to freeze, and progressive reclamation and capping has commenced. The North portion of the North Cell was capped in 2015. In 2016, capping continued all along RF1 and RF2 for 40m wide. The 2015 and 2016 capping merged together during winter 2017. Extensive capping activities are planned in 2018 as well. After mining is completed, capping of the South Cell will be completed.

**Figure 7-2: Tailings Storage Facility Stage Storage Volume Curve**



**7.6 TAILINGS STORAGE FACILITY CAPACITY**

As mill processing rates and tailings characteristics are liable to fluctuate over the life of the mine, the design of the TSF and tailings deposition plan will continue to evolve based on changes in design parameters including mill process rates, tailings beach slopes, ice entrapment, and tailings in-situ





## UPDATED MINE WASTE ROCK AND TAILINGS MANAGEMENT PLAN

densities. As such, a preliminary deposition plan was done in 2009 to provide guidelines for operation of the facility and to schedule the construction of the TSF perimeter dikes. The preliminary deposition plan was initially updated each year to include data collected from the previous year's deposition within the TSF. Since 2013, AEM has assigned dedicated engineers, who regularly review/update the deposition plan incorporating any new and relevant information and changes to mine and operational planning.

The TSF was designed to have sufficient capacity to store the expected tailings volume over the life of mine (Golder, 2008b). In that same study, a sensitivity analysis was conducted to evaluate the impact of possible ice entrapment on the final elevation of the TSF. AEM continues to assess impacts of dynamic parameters (ice thickness, beach angles & dry density) of the model with sensibility analysis that are compared to actual results. It is well known to AEM that ice has been trapped in the tailings as a result of tailings transport water freezing before it reaches the Reclaim Pond. The results are summarized in Table 7.5. The original design included an assumption of a 20% tailings bulking factor due to ice entrapment. AEM has since determined that this assumption was less than information gathered on site through field observations, as explained below.

AEM performs bi-annually a bathymetric analysis to re-assess summer and winter parameters. The last official analysis was done in September 2017 to further validate the key variables which influence the Water Balance as well as the deposition plan. Mainly, those key variables are the tailings dry density (influenced by ice entrapment) and the sub-aerial and sub-aqueous beach angles. Furthermore, a dynamic model was established with parameters influenced in accordance with the real time conditions (i.e. seasonal temperature variation) instead of working with year round estimated average and this allows AEM to better reflect the actual site conditions. The effect of longer beaches in the Deposition Plan forecast which affects both dry density and ice entrapment ice reflected in table 7.4.

The 2017 bathymetry was compared to the previous bathymetries realized yearly from 2014. The findings revealed that deposition in the South Cell during 2017 behaved similarly to 2016 due to a comparable beach geometry. However, beach angles have shown to be slightly shallower than in 2016 which are consistent with field observations. Average tailings dry density measured was of  $1.30\text{t/m}^3$  in 2017 instead of the modelled  $1.48\text{t/m}^3$  used for the same period in the model and based on 2016 bathymetric results. This difference can be explained by the longer sub-aerial tailings beach observed in the South Cell during the last year compared to 2016 which led to an increase in ice entrapment. The analysis of the water balance leads to a revised ice-entrapment of 40% instead of the 36% measured in 2016. Beach angles measured in the South Cell were also a bit shallower at 0.73% sub-aerial beach slope instead of the 0.88% of the previous year and 2.95% sub-aqueous



**UPDATED MINE WASTE ROCK AND TAILINGS  
MANAGEMENT PLAN**

slope instead of 3.03%. **Error! Not a valid bookmark self-reference.** below shows the evolution of the measured parameters used for modelling the South Cell. Note that measured parameters on a given year are applied to the next year's forecast until bathymetric analysis become available.

**Table 7.3: Measured parameters used for South Cell modelling**

	Tailings Dry Density (t/m <sup>3</sup> )	Sub-aerial beaches (%)	Sub-Aqueous beaches (%)
<b>2014</b> (*same as NC)	1.28*	0.45*	4.00
<b>2015</b>	1.45	1.10	3.60
<b>2016</b>	1.48	0.88	3.03
<b>2017</b>	1.30	0.73	2.95

Table 7.4 presents the parameters used for the South Cell tailings deposition plan.



**UPDATED MINE WASTE ROCK AND TAILINGS  
MANAGEMENT PLAN**

**Table 7.4: South Cell tailings deposition modelling parameters**

Month	Parameters					
	Ice Thickness (m)	Ice Ratio (%)	Tailings Dry Density (%)	Ice entrapment (%)	Sub aerial beach angle (%)	Sub aqueous beach angle (%)
<b>18-Jan</b>	1.1	35%	1.18	46%	0.73%	2.95%
<b>18-Feb</b>	1.3	47%	1.18	46%	0.73%	2.95%
<b>18-Mar</b>	1.6	56%	1.18	46%	0.73%	2.95%
<b>18-Apr</b>	1.7	61%	1.18	46%	0.73%	2.95%
<b>18-May</b>	0	0%	1.32	40%	0.73%	2.95%
<b>18-Jun</b>	0	0%	1.46	32%	0.73%	2.95%
<b>18-Jul</b>	0	0%	1.46	32%	0.73%	2.95%
<b>18-Aug</b>	0	0%	1.46	32%	0.73%	2.95%
<b>18-Sep</b>	0	0%	1.46	32%	0.73%	2.95%

In addition to the contingency related to density, the design of the dikes allows for staging crest elevations without major re-design. The TSF dikes are raised by the downstream method, and the alignments of the dikes were selected to allow additional rising to occur above 150 masl, should additional ore bodies be identified.

The key variables that will influence the performance of the facility are the following:

- Tailings beach slope;
- Reclaim pond volume;
- In-situ dry density;
- Seepages; and
- Ice content.



**UPDATED MINE WASTE ROCK AND TAILINGS  
MANAGEMENT PLAN**

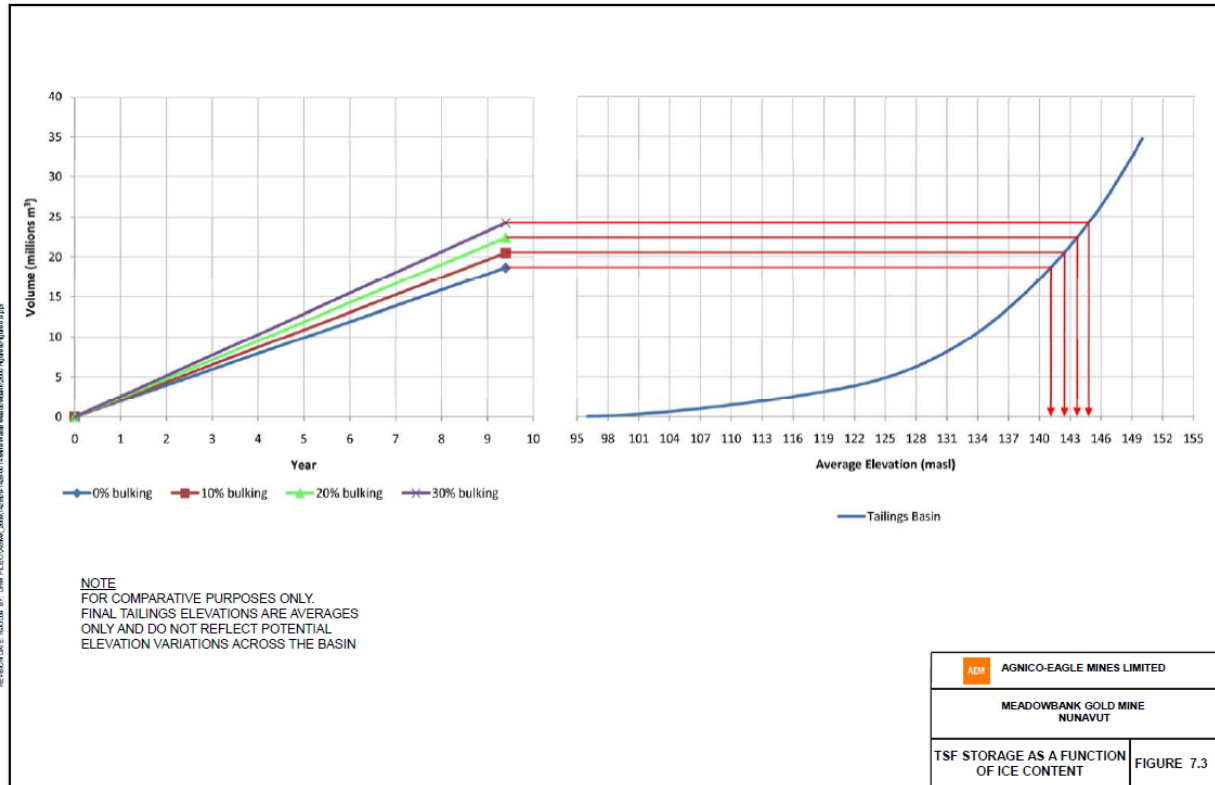
Regular monitoring of the TSF, such as bathymetry and topography surveys, is to be conducted through the life of the TSF to adjust model parameters and deposition strategy. This ensures proper planning of the raisings/dikes construction and water availability in the TSF pond. It will also help in the evaluation of ice entrapment throughout the life of the TSF and verification of model parameters and deposition strategy within the updated deposition plan.

***Table 7.5: Average Height Increase of Tailings Surface Elevation for Various Amounts of Ice Entrapment based on Golder, 2008b***

Proportion of Entrapped Ice (%)	Average Height Increase of Final Tailings Surface Elevation* (m)
0	-
10	1.4
20	2.5
30	3.7

\*Based on initial ore reserves.

Figure 7-3: Tailings Storage as a Function of Ice Content





## UPDATED MINE WASTE ROCK AND TAILINGS MANAGEMENT PLAN

### 8 THERMAL MONITORING PLAN

---

To observe the freezeback of the Tailing Storage Facility (TSF) perimeter impoundment dikes and rockfill structures as well as the Rockfill Storage Facilities (RSF's), a series of subsurface thermistors have been installed at strategic, prescribed locations.

The thermistors have been installed in boreholes drilled around and in the perimeter of the RSF/TSF. The purposes of the TSF thermistors are to monitor the talik temperatures underneath the TSF as freezing progresses and to monitor the freezing of the tailings. The purpose of the thermistors in the RSF is to monitor the RSF temperature as freezing progresses. Finally, the purpose of the perimeter thermistors is to monitor the temperature of the perimeter structures which include the containment structures (i.e. saddle dams) as freezing progresses. See Figure 8-1 for the specific locations of those thermistors.

The thermistors are monitored regularly and this will continue throughout the operational period as well as during closure and post closure. The results are used to evaluate the predicted thermal response of the facilities with the actual thermal response. This will allow adjustments to the tailings deposition plan, the Waste Rock deposition and the final Closure Plan to attempt to influence the rate at which the TSF and RSF freeze.

At this time the thermistors indicate that freezeback is occurring within the North Cell TSF and in the Portage RSF structures. The thermistors installed on the perimeter structures of the TSF/RSF show that the foundation and the dikes remain frozen on yearly basis. For Central Dike, piezometers are also used to monitor stability of the structure.

These installations will continue to take place as the TSF is filled with tailings. Initially, some of the installations may be 'sacrificial' or temporary; in other words installations may be used to collect data over a short period and then may be destroyed or inaccessible as deposition progresses. The rationale behind installing such thermistors is to monitor the thermal conditions within and beneath the TSF from a very early stage in the life of the facility. As the TSF reaches final elevation, thermistors will be installed from the final tailings surface, and directly into the underlying bedrock. These will likely be on the order of 50 m to 75 m in length (potentially deeper) with nodes placed at intervals to monitor temperatures within the tailings and within the bedrock.

The locations of the thermistors are based on tailings deposition plans. For waste rock, the phasing and locations are based on the deposition plan described in Section 6 of this document. Future deposition plans will be taken into account prior to scheduling future installations, and if necessary thermistor specifications and locations should be modified as necessary.



## UPDATED MINE WASTE ROCK AND TAILINGS MANAGEMENT PLAN

A research project is ongoing at Meadowbank in collaboration with the RIME (Research Institute of Mine and Environment). Construction of test pads for cover trials in the TSF and installation of instruments for monitoring within the TSF and the RSF is part of the research project. The monitoring results are used for cover design, cover performance assessment for both the TSF's and RSF's, and to ensure the expected criteria for closure will be met and maintained.

In 2016, AEM installed 2 new thermistors within the North Cell tailings impoundment and 6 new thermistors in the perimeter dikes, as shown on Figure 8-1 for thermistor locations.

In 2017, another 3 thermistors and 2 piezometers were installed on the Stormwater Dike area in January 2017 and an 8 additional thermistors were installed in the Tailings Storage Facility in February 2017. Furthermore, 7 new holes have been drilled on Central Dike since last year, all those 7 holes were instrumented with at least 2 piezometers and have 1 thermistor each.

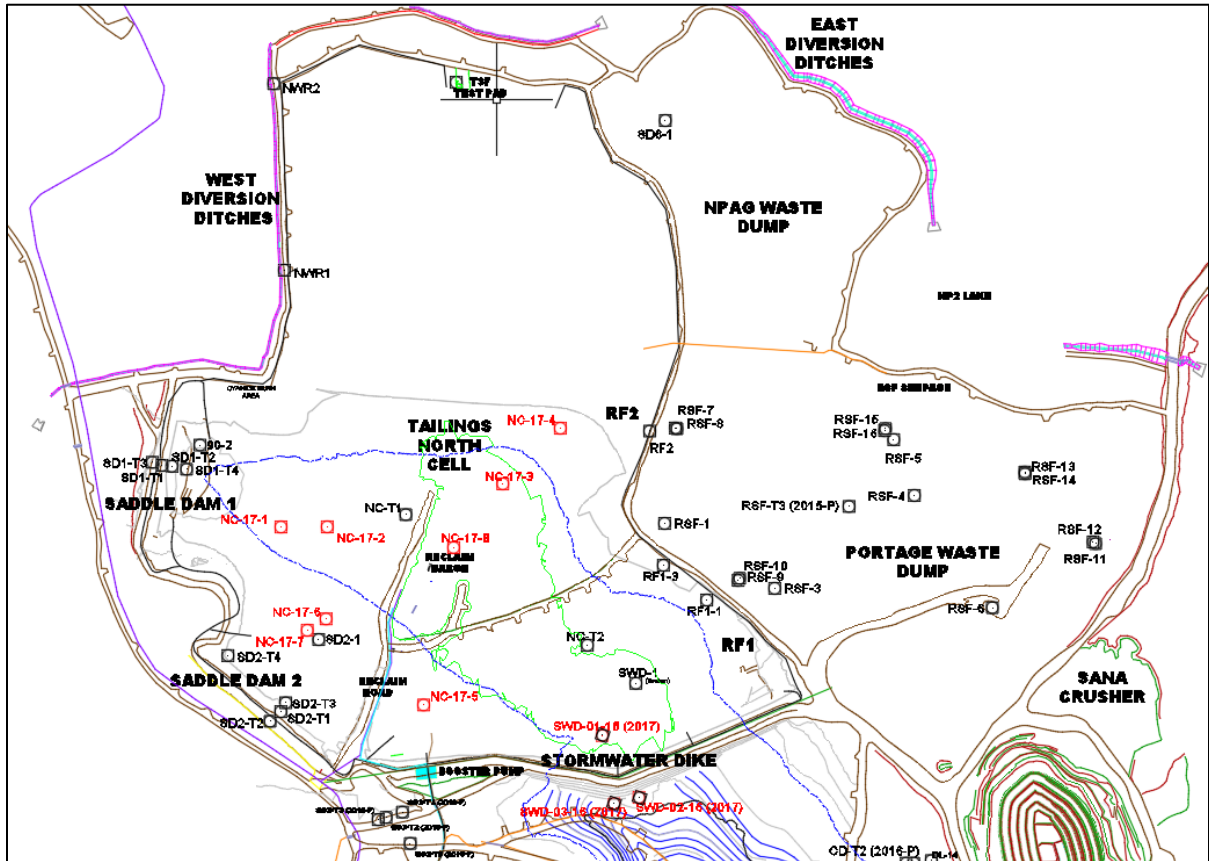
### 8.1 INSTRUMENT LOCATION

Installed instruments are presented on Figure 8-1.

UPDATED MINE WASTE ROCK AND TAILINGS  
MANAGEMENT PLAN

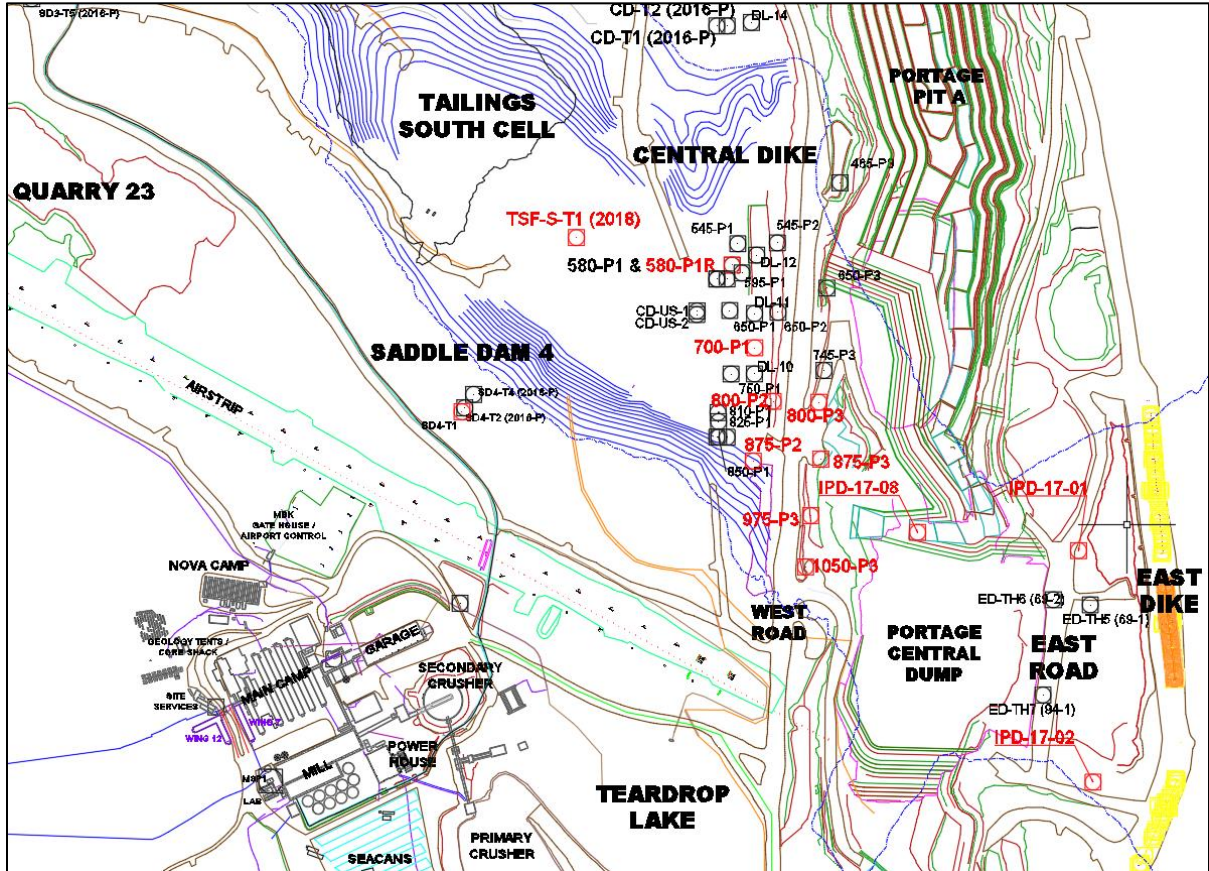


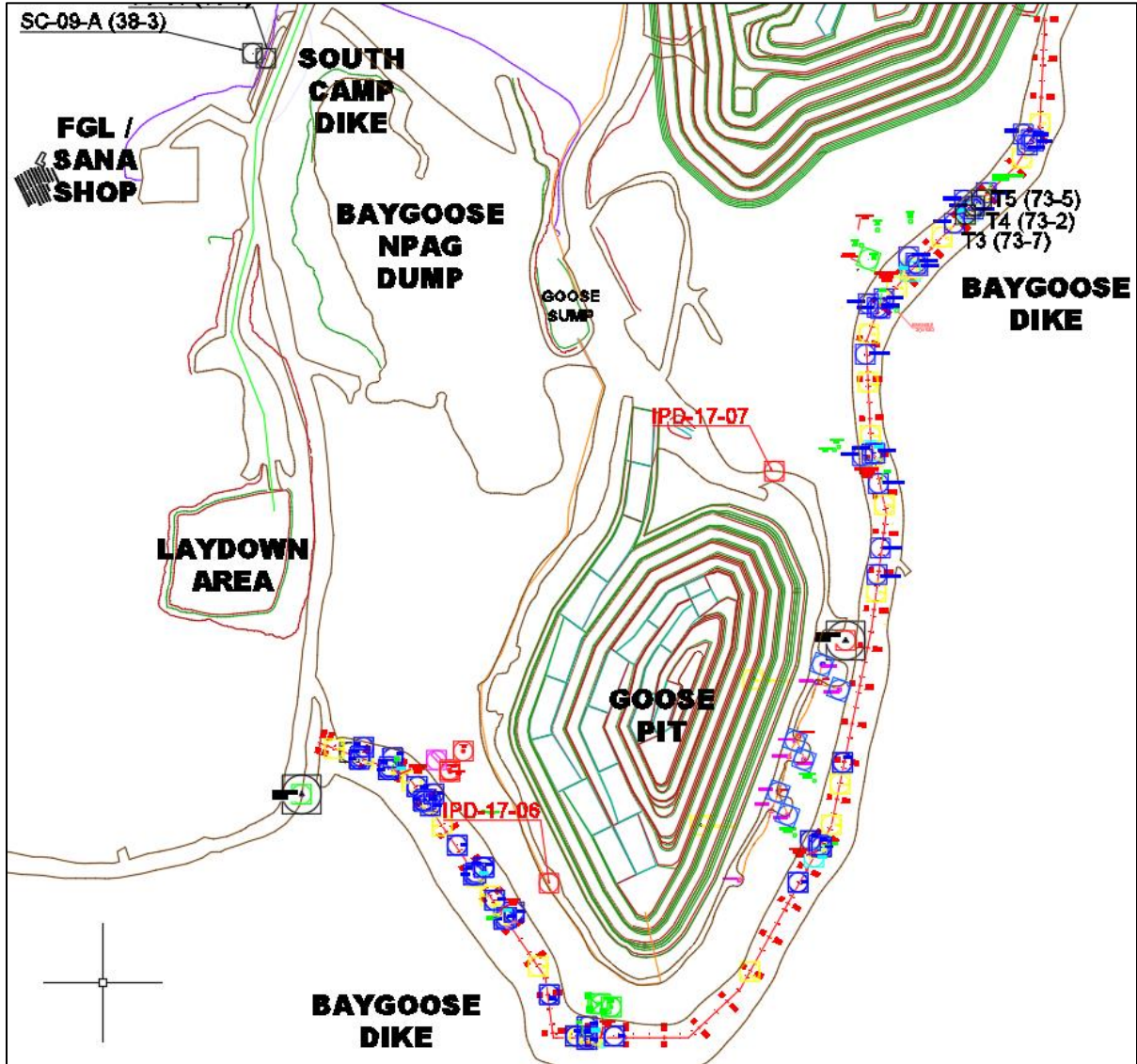
Figure 8-1 a,b & c: Installed Thermistor Location





UPDATED MINE WASTE ROCK AND TAILINGS  
MANAGEMENT PLAN





*Note: red were installed in 2017, black are old ones*

**8.1.1 Operations**

During the operational life of Meadowbank, monitoring of the TSF can be divided into two phases, 2010 to 2015 in the North Cell and 2015 to 2018 in the South Cell.

The Portage RSF will operate from 2009 to 2018. The Vault RSF will operate from 2014 to 2018.



The following describes the requirement for thermistors and piezometers at each storage facilities.

#### **8.1.1.1 TSF North Cell**

- Several thermistors have already been installed as part Stormwater Dike (SWD) construction in between 2009 and 2010. Data collected from these structures form part of the TMP. These instruments were damaged in 2016 and were replaced during winter 2017 by 3 piezometers and 2 thermistors.
- SD2-T1; thermistor installed in 2012 down to the till plug, at the upstream toe of SD2.
- T121-1(RF1); thermistor installed in 2012 along the perimeter of RF1 (upstream). This will provide a leading indicator of seepage through RF1 towards the Portage RSF. It will also monitor thermal regime of the upper 40 m into the overlying soils and bedrock.
- T73-6 (RF1-2); thermistor installed in 2012 along the perimeter of RF1 (upstream). This will also provide a leading indicator of seepage through RF1 towards the Portage RSF.
- RF1-3; thermistor installed in 2013 along the upstream slope of the RF1. The purpose of the thermistor is to monitor the temperature of the tailings sitting on the slope of the RF1.
- T122-1 (RF-2); thermistor installed in 2012 along the perimeter of RF2 (upstream). This will provide a leading indicator of seepage through RF2 towards the Portage RSF. It will also monitor thermal regime of the upper 40 m into the overlying soils and bedrock.
- T90-2 (SD-1); thermistor installed in 2012 in tailings near the Saddle Dam 1.
- NC-T1 & NC-T2; thermistors installed as part of the TSF North Cell in 2016 as part of the cover trials. It will monitor the active cover layer, the tailings, below the lakebed into the talik. It will replace SD2-1 and SWD-1 which were installed in the tailings in 2014 but broken since.
- NC-17-01 to NC-17-08; installed as part of the TSF North Cell in 2017 as part of the cover trials. It will monitor the active cover layer, the tailings, below the lakebed into the talik. These thermistors extend the monitoring to a larger scale than the NC-T1 and NC-T2 installed in 2016.



## UPDATED MINE WASTE ROCK AND TAILINGS MANAGEMENT PLAN

- NWR-1 and NWR-2; thermistors installed along the diversions ditch, at northwest of the North tailings cell, in 2014. The purpose of those thermistors is to monitor the temperature around the TSF and it will also provide a leading indicator of potential seepage.
- SD6-1; thermistor installed in 2014 in a low point at the northeast of the north cell. This will provide a leading indicator of potential seepage towards the Portage RSF.

### **8.1.1.2 TSF South Cell**

- T147-1; this 57 m depth thermistor was installed in 2012 in the Stormwater Dike foundation as part of the monitoring of the tailings and talik freeze back. It replaced T147-2 which was installed in 2010. In 2017, 2 new thermistors and 2 piezometers were installed within the Stormwater Dike foundation to monitor the thermal behavior of a thawed area in the dike foundation that was causing instabilities and the freeze back of the talik.
- CD-T1 through CD-T6; In 2013 AEM installed 9 thermistors at Central Dike: 750 P1, 650 P1, 580 P1, 545 P1, 650 P2, 545 P2, 875 P3, 650 P3, and 465 P3). CD-US-1 was installed in the upstream Central dike slope in 2014 to monitor the temperature of the tailings. New thermistors were installed on Central Dike in 2015: 595 P1, 810 P1, 825 P1 and 850 P1. In 2016, CD-US-2 was installed; this thermistor acts as the continuation of CD-US-1 on the upstream slope. Following the Central Dike seepage situation observed during the summer 2017, seven new holes were instrumented in the downstream area as the 580-P1R, 700-P1, 800-P2, 800-P3, 875-P2, 975-P3, 1050-P3. Piezometers and thermistors were installed in each of these holes.
- SD3-T2, T3, T4 and T5; these thermistors were installed in 2016 to monitor the thermal regime of the foundation of the Saddle Dam 3, once the first construction phase was completed.
- SD4-T2 and T4; these thermistors were installed in 2016 to monitor the thermal behavior of the foundation of Saddle Dam 4.
- SD5-T1, T2, T3, T4; these thermistors are proposed as instrumentation for Saddle Dam 5.
- TSF-S-T1; Location and specifications to be reviewed in conjunction with South Cell cover design, installation scheduled in 2018. This would monitor a cross-section of the South Cell,



including the active layer through the cover and tailings, about 50 m depth of tailings, and 40 m into the talik.

- Following the Central Dike seepage situation observed during the summer 2017, seven new holes were instrumented in the downstream area as the 580-P1R, 700-P1, 800-P2, 800-P3, 875-P2, 975-P3, 1050-P3. Piezometers and thermistors were installed in each of these holes.

#### **8.1.1.3 Portage RSF**

- RSF-1 and RSF 3 to 6; thermistors installed in 2013 inside the perimeter of the RSF. The purpose of those thermistors is to monitor the freezeback of the RSF and validate the cover thickness.
- RSF-T3; RSF 7 to 16; thermistors installed in 2015 inside the perimeter of the RSF. The purpose of these thermistors is to monitor the freezeback of the RSF and validate the cover thickness.
- Additional instruments could be installed during operations as part of cover performance assessment.

#### **8.1.1.4 Vault RSF**

- Instrumentation is not currently planned within Vault RSF as it is expected to behave similarly to Portage RSF.

#### **8.1.1.5 Goose Pit TSF**

- IPD-17-06 & IPD-17-07 were installed in 2017 to gather thermal and piezometric background data to refine AEM models.

#### **8.1.1.6 Portage Pit TSF**

- IPD-17-01 & IPD-17-02 were installed in 2017 to gather thermal and piezometric background data to refine AEM models. Also, IPD-17-08 was installed in the Central dump to get additional data to understand the dump thermal and water level behavior.





## UPDATED MINE WASTE ROCK AND TAILINGS MANAGEMENT PLAN

### 8.1.2 Closure

Final cover details for the TSF's will be subject to results obtained from the site trials previously discussed as well as from data provided from the Thermal Monitoring Program. The different thermistors installed will serve to monitor the performance of the covers on the Portage RSF, the TSF North Cell and the TSF South Cell, respectively. Monitoring of TSF and RSF freezeback in the post-closure phase is a requirement of the Water Licence.

### 8.2 INSTRUMENT SPECIFICATIONS

Each thermistor to be installed as part of the TMP must comply with the general specifications presented in

**Table 8.1.** Table 8.2 provides details concerning the installations.

**Table 8.1: Thermistor Specifications**

Items	Specifications
Accuracy	1 degree Celsius
Thermistor temperature range	-40 to 40 degree Celsius
Method of cable termination	Amphenol connector and DAS direct connection
Cable termination enclosures	Weatherproof Animal resistant
Readout and data logger	Manual and DAS

**Table 8.2: Existing and Proposed Thermistor Installation Details**

Name	Northing	Easting	Year Installed (I) or Planned (P)	Purpose	Notes	Special Environmental Conditions	Top - Bot Elevation	Depth/Length	Lead Length	Nodes	NODE DEPTHS (m)															
											0	2	4	6	8	10	12	...	2 m spacing to 30 m							
SD1-T2 (90-1)	7215956	637052	2009 (I)	Stage 1 Rockfill and foundation	Installed to 10m below bedrock, 2m spacing	Tailings	140 -110	30		16	0	2	4	6	8	10	12	...	2 m spacing to 30 m							
SD1-T4 (115-1)	7215949	637084	2009 (I)	Stage 1 U/S toe and foundation	Installed to 10m below bedrock, 2m spacing	Tailings	134- 119	15		16	0	1	2	3	4	5	6	...	1 m spacing to 16 m							
SD1-T1 (120-1)	7215978	637014	2010 (I)	Stage 1 & 2 U/S 3:1 slope	Installed to bedrock, at U/S toe of SD1	Tailings	149 -133	16		16	0	2	3	4	5	6	7	8	9	10	11	12	13	14	15	16
SD1-T3 (2m-1)	7215949	637084	2010 (I)	Stage 2 Rockfill and foundation	Installed to 10m below bedrock, 2m spacing	Tailings	148 -118	40		16	2	4	6	8	10	12	14	16	18	20	22	24	26	28	30	32
SD2-T2 (40M)	7215399	637267	2010 (I)	Stage 1 Rockfill and foundation	Installed to 10m below bedrock, 2m spacing. Broken.	Tailings	148-118	30		16	2	4	6	8	10	12	14	16	18	20	22	24	26	28	30	32
SD2-T3	7215439	637301	2010 (I)	Stage 2 Rockfill and	Installed to 10m below bedrock, 2m	Tailings	144-129	15		16	0	1	2	3	4	5	6	7	8	9	10	11	12	13	14	15

Name	Northing	Easting	Year Installed (I) or Planned (P)	Purpose	Notes	Special Environmental Conditions	Top - Bot Elevation	Depth/Length	Lead Length	Nodes	NODE DEPTHS (m)															
											0	1	2	3	4	5	6	7	9	11	13	15	17	19	21	23
(1m)				foundation	spacing																					
SD2-T4 (73-4)	7215542	637175	2010 (I)	Stage 1 U/S toe and foundation	Installed to 10m below bedrock, 2m spacing	Tailings	144-121	23		16	0	1	2	3	4	5	6	7	9	11	13	15	17	19	21	23
T147-2	7215212	637979	2010 (I)	Monitor Talik beneath 2PL	Installed part of G/W monitoring Well investigation	Tailings	119.15	62		16	4	6	8	10	12	14	16	21	26	31	36	41	46	51	56	61
T147-1 (Stormwater Dike1)	7215204	637964	2012(I)	Monitor Talik beneath 2PL	To replace T147-2	Tailings	119.15	62		16	4	6	8	10	12	14	16	21	26	31	36	41	46	51	56	61
T121-1 (RF1-1)	7215643	638268	2012 (I)	Monitor potential seepage through RF1 and foundation to RSF.	Installed on RF1 crest	PAG Rock	150- 90	60		16	7	9	11	13	15	17	19	21	23	25	27	31	35	40	50	60
T73-6 (RF1-2)	7215621	638277	2012(I)	Monitor potential seepage through RF2 and	Installed on RF1 crest	PAG Rock	149.5-133	16.5		16	0	0	0	0	0	0	0	0.5	2.5	4.5	6.5	8.5	10.5	12.5	14.5	16.5





Name	Northing	Easting	Year Installed (I) or Planned (P)	Purpose	Notes	Special Environmental Conditions	Top - Bot Elevation	Depth/Length	Lead Length	Nodes	NODE DEPTHS (m)															
				foundation to RSF.																						
T122-1 (RF-2)	7216032	638096	2012 (I)	Monitor potential seepage through RF2 and foundation to RSF.	Installed on RF2 crest	PAG Rock	150- 90	60		16	12.4	13.4	14.4	15.4	16.4	17.4	18.4	19.4	21.4	24.4	29.4	34.4	39.4	44.45	49.4	59.4
T90-2 (SD1)	7216002	637113.5	2012 (I)	Monitor Talik beneath 2PL	Former TSF-N-T2 Bead#4 = broken	Tailings	143-131	12		16	0	0	0	0	1	2	3	4	5	6	7	8	9	10	11	12
SD2-T1	7215439	637300	2012 (I)	Stage 2 U/S 3:1 slope	Installed to till plug, at U/S toe of SD2	Tailings	148-145	30		16	0	2	4	6	8	10	12			2 m spacing to 30 m					Installed on slope and in till plug	
750 P1	7214539.4	638679.8	2013 (I)	1) Water flow 2) Freeze back rates		PAG-NAG Rock	115-63	52		13	4	7	10	13	16	19	22	25	28	34	40	46	52			
650 P1	7214639.7	638677.8	2013 (I)	1) Water flow 2) Freeze		PAG-NAG Rock	115-63	52		13	4	7	10	13	16	19	22	25	28	34	40	46	52			

Name	Northing	Easting	Year Installed (I) or Planned (P)	Purpose	Notes	Special Environmental Conditions	Top - Bot Elevation	Depth/Length	Lead Length	Nodes	NODE DEPTHS (m)
				back rates							
580 P1	7214711.5	638681.5	2013 (I)	1) Water flow 2) Freeze back rates		PAG-NAG Rock	115-63	52		13	4 7 10 13 16 19 22 25 28 34 40 46 52
545 P1	7214745.4	638690.9	2013 (I)	1) Water flow 2) Freeze back rates		PAG-NAG Rock	115-63	52		13	4 7 10 13 16 19 22 25 28 34 40 46 52
650 P2	7214636.9	638754.2	2013 (I)	1) Water flow 2) Freeze back rates		PAG-NAG Rock	110-51	59		13	5 8 11 14 17 20 23 29 35 41 47 53 59
545 P2	7214746.6	638753.1	2013 (I)	1) Water flow 2) Freeze back rates		PAG-NAG Rock	112.5-51	61.5		13	7.5 10.5 13.5 16.5 19.5 22.5 25.5 31.5 37.5 43.5 49.5 55.5 61.5
875 P3	7214404.8	638821.5	2013 (I)	1) Water flow 2) Freeze back rates		PAG-NAG Rock	122-51	71		13	17 20 23 26 29 32 35 41 47 53 59 65 71



Name	Northing	Easting	Year Installed (I) or Planned (P)	Purpose	Notes	Special Environmental Conditions	Top - Bot Elevation	Depth/Length	Lead Length	Nodes	NODE DEPTHS (m)															
650 P3	7214675.1	638831.6	2013 (I)	1) Water flow 2) Freeze back rates		PAG-NAG Rock	109.5-51	58.5		13	4.5	7.5	10.5	13.5	16.5	19.5	22.5	28.5	34.5	40.5	46.5	52.5	58.5			
465 P3	7214841.6	638852.3	2013 (I)	1) Water flow 2) Freeze back rates		PAG-NAG Rock	138-51	87		13	33	36	39	42	45	48	51	57	63	69	75	81	87			
RF1-3 (RF1-3)	7215740	638126	2013 (I)	Monitor potential seepage through RF1 and foundation to RSF.	Installed on RF1 slope	PAG Rock	148.36-144.05	4.3		11																
RSF1	7215831	638129	2013 (I)	1) Potential Seepage from TSF through RF1 2) Freeze back of rockfill		PAG Rock	172.8-123.10	50		13	0	0.2	0.7	1.2	1.7	2.2	2.7	3.7	9.7	19.7	29.7	39.7	49.7			
RSF-3 (73-1 &	7215689	638370	2013 (I)	1) Potential Seepage from TSF through RF1		PAG Rock	173.99-128.5	46		16/29	73-1: 0.5	1.5	2.5	3.5	4.5	5.5	6.5	7.5	9.5	11.5	13.5	15.5	17.5	19.5	21.5	23.5



Name	Northing	Easting	Year Installed (I) or Planned (P)	Purpose	Notes	Special Environmental Conditions	Top - Bot Elevation	Depth/Length	Lead Length	Nodes	NODE DEPTHS (m)
RSF3)				2) Freeze back of rockfill		PAG Rock				13/29	RSF3: 23.5 25.5 27.5 29.5 33.5 35.5 37.5 38.5 39.5 40.5 41.5 43.5 45.5
RSF-4 (248 & RSF4)	7215892	638675	2013 (I)	1) Potential Seepage from TSF through RF1		PAG Rock	210.21-131	79		16/29	248: 2.5 3.5 4.5 5.5 6.5 7.5 8.5 10.5 12.5 15.5 20.5 25.5 30.5 35.5 40.5 50.5
				2) Freeze back of rockfill		PAG Rock					13/29
RSF-5 (RSF2 & RSF5)	7216014	638630	2013 (I)	1) Potential Seepage from TSF through RF1		PAG Rock	193.02-131	62		13/26	RSF2: 0.5 1 1.5 2 2.5 3 3.5 4.5 10.5 20.5 30.5 40.5 50.5
				2) Freeze back of rockfill		PAG Rock					13/26
RSF-6 (169 & RSF6)	7215647	638845	2013 (I)	1) Potential Seepage from TSF through RF1 2) Freeze		PAG Rock	197.79-127.8	70		16/29	169: 0.5 1.5 2.5 3.5 4.5 5.5 6.5 7.5 8.5 9.5 10.5 11.5 13.5 15.5 17.5 19.5

Name	Northing	Easting	Year Installed (I) or Planned (P)	Purpose	Notes	Special Environmental Conditions	Top - Bot Elevation	Depth/Length	Lead Length	Nodes	NODE DEPTHS (m)
				back of rockfill		PAG Rock				13/29	RSF6: 30 40 50 52 54 56 58 60 62 64 66 68 70
RSF-7	7216039	638153	2015 (I)	Monitor Temperature of the RSF		PAG Rock	172.5-168	4.5		10	0.9 1.4 1.9 2.4 2.9 3.4 3.9 4.4 4.9 5.4
RSF-8	7216038	638156	2015 (I)	Monitor Temperature of the RSF		PAG Rock	172.9-163.9	9		10	0.9 1.9 2.9 3.9 4.9 5.9 6.9 7.9 8.9 9.9
RSF-9	7215707	638290	2015 (I)	Monitor Temperature of the RSF		PAG Rock	170.6-166.1	4.5		10	0.7 1.2 1.7 2.2 2.7 3.2 3.7 4.2 4.7 5.2
RSF-10	7215711	638293	2015 (I)	Monitor Temperature of the RSF		PAG Rock	171.1-162.1	9		10	0.7 1.7 2.7 3.7 4.7 5.7 6.7 7.7 8.7 9.7
RSF-11	7215787	639071	2015 (I)	Monitor Temperature of the RSF		PAG Rock	192.3-187.8	4.5		10	0.8 1.3 1.8 2.3 2.8 3.3 3.8 4.3 4.8 5.3
RSF-12	7215791	639066	2015 (I)	Monitor Temperature of the RSF		PAG Rock	192.9-183.9	9		10	0.6 1.6 2.6 3.6 4.6 5.6 6.6 7.6 8.6 9.6

Name	Northing	Easting	Year Installed (I) or Planned (P)	Purpose	Notes	Special Environmental Conditions	Top - Bot Elevation	Depth/Length	Lead Length	Nodes	NODE DEPTHS (m)												
											0.9	1.4	1.9	2.4	2.9	3.4	3.9	4.4	4.9	5.4			
RSF-13	7215943	638916	2015 (I)	Monitor Temperature of the RSF		PAG Rock	190.8-186.3	4.5		10	0.9	1.4	1.9	2.4	2.9	3.4	3.9	4.4	4.9	5.4			
RSF-14	7215939	638917	2015 (I)	Monitor Temperature of the RSF		PAG Rock	190.9-181.9	9		10	0.9	1.9	2.9	3.9	4.9	5.9	6.9	7.9	8.9	9.9			
RSF-15	7216038	638612	2015 (I)	Monitor Temperature of the RSF		PAG Rock	191.4-186.9	4.5		10	0.7	1.2	1.7	2.2	2.7	3.2	3.7	4.2	4.7	5.2			
RSF-16	7216033	638610	2015 (I)	Monitor Temperature of the RSF		PAG Rock	191.6-182.6	9		10	0.8	1.8	2.8	3.8	4.8	5.8	6.8	7.8	8.8	9.8			
SWD-1	7215482	638006	2014 (I)	Monitor Talik beneath TSF	Broken	Tailings	147-117	30		13	0	1	2	3	4	6	8	10	14	18	22	26	30
SD2-1	7215577	637350	2014 (I)	Monitor Talik beneath TSF	Broken Fixed summer 2016	Tailings	147-129	18		13	0	1	2	3	4	5	6	8	10	12	14	16	18
NWR1	7216384	637298	2014 (I)	Monitor Temperature around TSF	The beads #6 and 8 to 13 do not work.	Diversion ditches	151.5-157.5	7		13	0	0.5	1	1.5	2	2.5	3	3.5	4	4.5	5	6	7



Name	Northing	Easting	Year Installed (I) or Planned (P)	Purpose	Notes	Special Environmental Conditions	Top - Bot Elevation	Depth/Length	Lead Length	Nodes	NODE DEPTHS (m)															
											0	0.5	1	1.5	2	2.5	3	3.5	4	4.5	5	6	7			
NWR2	7216710	637275	2014 (I)	Monitor Temperature around TSF	The beads #1 and 5 to13 do not work.	Diversion ditches	151-158	7		13	0	0.5	1	1.5	2	2.5	3	3.5	4	4.5	5	6	7			
SD6-1	7216710	638131	2014 (I)	Monitor Temperature around TSF (low point)	The beads #9, 10, 11, 12 and 13 do not work.	PAG-NAG Rock	150.5-157.5	7		13	0	0.5	1	1.5	2	2.5	3	3.5	4	4.5	5	6	7			
CD-US-1 (122.5)	7214639	638626	2014 (I)	Upstream slope (Tailing)	Installed on Central Dike slope	Tailings	126.4-111.1	15/52.5	70	16	0	3.5	7	10.5	14	17.5	21	24.5	28	31.5	35	38.5	42	45.5	49	52.5
595 P1	7214699	638697	2015 (I)	Monitor the Central Dike Seepage		RF/Till/Bedrock	114.5-69.5	45		16	0	3	6	9	12	15	18	21	24	27	30	33	36	39	42	45
810 P1	7214478	638659	2015 (I)	Monitor the Central Dike Seepage		RF/Till/Bedrock	135-75	60		16	0	4	8	12	16	20	24	28	32	36	40	44	48	52	56	60
825 P1	7214464	638660	2015 (I)	Monitor the Central Dike Seepage		RF/Till/Bedrock	131-71	60		16	0	4	8	12	16	20	24	28	32	36	40	44	48	52	56	60
850 P1	7214440	638660	2015 (I)	Monitor the Central Dike Seepage		RF/Bedrock	133-73	60		16	0	4	8	12	16	20	24	28	32	36	40	44	48	52	56	60

Name	Northing	Easting	Year Installed (I) or Planned (P)	Purpose	Notes	Special Environmental Conditions	Top - Bot Elevation	Depth/Length	Lead Length	Nodes	NODE DEPTHS (m)															
CD-US-2 (67.5)	7214649	638626	2016 (I)	Upstream slope (Tailing)	Installed on Central Dike slope	Tailings	137-127	52.5	15	16	0	3.5	7	10.5	14	17.5	21	24.5	28	31.5	35	38.5	42	45.5	49	52.5
NC-T1	7215849	637562	2015 (I)	Monitor Talik beneath TSF		Tailings	147-85	65	300	13	1	4	7	10	13	16	19	22	25	28	31	36	41	46	51	61
NC-T2	7215562	637969	2015 (I)	Monitor Talik beneath TSF		Tailings	148-88	60	200	13	0	3	6	9	12	15	18	21	24	27	30	35	40	45	50	60
SD3-T1	7215196	637480	2018 (P)	Stage 1 & 2 U/S 3:1 slope	Install to bedrock, at U/S toe of SD3	RF/Till/Bedrock	145	~45		16	1	2	3	4	4.5	5	6	6.5	7	7.5	8	10	12	13	15	17
SD3-T2	7215190	637520	2016 (I)	Stage 1 Rockfill and foundation	Installed to 10m below bedrock, 2m spacing	RF/Till/Bedrock	139-111	18		16	1	2	3	4	4.5	5	6	6.5	7	7.5	8	10	12	13	15	17
SD3-T3	7215180	637487	2016 (I)	Stage 2 Rockfill and foundation	Installed to 10m below bedrock, 2m spacing	RF/Till/Bedrock	137-121	18.3		16	1	2	3	4	4.5	5	6	6.5	7	7.5	8	10	12	13	15	17
SD3-T4	7215200	637556	2016 (I)	Stage 1 U/S toe and foundation	Installed to 10m below bedrock, 2m spacing	RF/Till/Bedrock	138-122	18		16	1	2	3	4	5	5.5	6	6.5	7	7.5	8	8.5	10	12	14	16



Name	Northing	Easting	Year Installed (I) or Planned (P)	Purpose	Notes	Special Environmental Conditions	Top - Bot Elevation	Depth/Length	Lead Length	Nodes	NODE DEPTHS (m)															
											1	2	3	4	4.5	5	6	6.5	7	7.5	8	10	12	13	15	17
SD3-T5	7215130	637575	2016 (I)	Stage 1 U/S toe and foundation	Installed to 10m below bedrock, 2m spacing	RF/Till/Bedrock	138-122	18		16	1	2	3	4	4.5	5	6	6.5	7	7.5	8	10	12	13	15	17
SD4-T4	7214502	638269	2016 (I)	Stage 1 U/S toe and foundation	Installed to 6m below bedrock, 2m spacing	RF/Till/Bedrock	139	12		16	1	2	2.5	3	3.5	4	4.5	5	5.5	6	6.5	7	8	9	10	11
SWD-01-T1	7215368.00	637992.60	2017 (P)	Monitor tailings/talik freezeback	Installed to 6m below bedrock, 2m spacing	RF/Till/Bedrock	149	31.25		16	0	2	4	6	8	10	12	14	16	18	20	22	24	26	28	30
SWD-02-T2	7215233.00	638072.90	2017 (P)	Monitor foundation temperature	Installed to 6m below bedrock, 2m spacing	RF/Till/Bedrock	133	75		16	0	2	4	6	8	10	15	20	25	30	35	40	45	50	55	60
SWD-03-T3	7215219.00	638018.70	2017 (P)	Monitor foundation temperature	Installed to 6m below bedrock, 2m spacing	RF/Till/Bedrock	133	25.30		16	1	2	3	4	5	6	7	8	9	10	11	12	13	14	15	16
NC-17-01	7215784.9	637292.71	2017 (I)	Monitor Talik beneath TSF	Installed to 6m below bedrock, 2m spacing	Tailing/Bedrock	148.1/107	41.1	2 & 4	16	1	3	5	7	9	11	13	15	17	19	21	23	25	29	33	37
NC-17-02	7215821.2	637391.68	2017 (I)	Monitor Talik	Installed to 6m below	Tailing/Bedrock	147.6/93.6	54	1, 2, 3	16	1	2	3	4	6	8	11	14	17	20	23	26	31	36	41	46



Name	Northing	Easting	Year Installed (I) or Planned (P)	Purpose	Notes	Special Environmental Conditions	Top - Bot Elevation	Depth/Length	Lead Length	Nodes	NODE DEPTHS (m)															
				beneath TSF	bedrock, 2m spacing				& 4																	
NC-17-03	7215913.1	637776.23	2017 (I)	Monitor Talik beneath TSF	Installed to 6m below bedrock, 2m spacing	Tailing/Bedrock	147.6/93.6	54	1, 2, 3 & 4	16	1	2	3	4	6	8	11	14	17	20	23	26	31	36	41	46
NC-17-04	7216037.1	637901.41	2017 (I)	Monitor Talik beneath TSF	Installed to 6m below bedrock, 2m spacing	Tailing/Bedrock	148.5/17.58	40.9	2 & 4	16	1	3	5	7	9	11	13	15	17	19	21	23	25	29	33	37
NC-17-05	7215434	637602	2017 (I)	Monitor Talik beneath TSF	Installed to 6m below bedrock, 2m spacing	Tailing/Bedrock	148/106.9	41.1	2 & 4	16	1	3	5	7	9	11	13	15	17	19	21	23	25	29	33	37
NC-17-06	7215615.4	637389.05	2017 (I)	Monitor Talik beneath TSF	Installed to 6m below bedrock, 2m spacing	Tailing/Bedrock	147.8/106.3	41.5	2 & 4	16	1	3	5	7	9	11	13	15	17	19	21	23	25	29	33	37
NC-17-07	7215596	637349.92	2017 (I)	Monitor Talik beneath TSF	Installed to 6m below bedrock, 2m spacing	Tailing/Bedrock	147.9/107	40.9	2 & 4	16	1	3	5	7	9	11	13	15	17	19	21	23	25	29	33	37
NC-17-08	7215805.3	637693.09	2017 (I)	Monitor Talik beneath TSF	Installed to 6m below bedrock, 2m	Tailing/Bedrock	146.5/92.5	54	3 & 4	16	1	4	7	10	13	16	19	22	25	28	30	32	36	40	44	48



Name	Northing	Easting	Year Installed (I) or Planned (P)	Purpose	Notes	Special Environmental Conditions	Top - Bot Elevation	Depth/Length	Lead Length	Nodes	NODE DEPTHS (m)
					spacing						
CD-T1	7215089.51	638657.24	2018 (P)	U/S – Freeze back of tailings		Tailings	150-110			21	0 5 10 15 20 25 30 ... 100
CD-T2	7215089.51	638673.51	2018 (P)	Rockfill and foundation		PAG-NAG Rock	150-86			32	0 2 4 6 8 10 12 ... 62
CD-T3	7214689.51	638657.24	2018 (P)	U/S – Freeze back of tailings		Tailings	150-110			21	0 5 10 15 20 25 30 ... 100
CD-T4	7214689.51	638673.51	2018 (P)	Rockfill and foundation		PAG-NAG Rock	150-86			32	0 2 4 6 8 10 12 ... 62
CD-T5	7214439.51	638657.24	2018 (P)	U/S – Freeze back of tailings		Tailings	150-110			21	0 5 10 15 20 25 30 ... 100
CD-T6	7214439.51	638673.51	2018 (P)	Rockfill and foundation		PAG-NAG Rock	150-86			32	0 2 4 6 8 10 12 ... 62
SC-T1	7214755	638435	2018 (P)	1) Monitor freeze back of cover and tailings 2) Monitor talik	Installed on tailings cover. Location TBD, node locations to be reviewed upon cover	Tailings	150-60	90		16	0 1 1 2 2 2.5 3 5 10 20 35 50 55 60 75 90

Name	Northing	Easting	Year Installed (I) or Planned (P)	Purpose	Notes	Special Environmental Conditions	Top - Bot Elevation	Depth/Length	Lead Length	Nodes	NODE DEPTHS (m)															
					design.																					
580-P1R	7214719.6	638708.35	2017 (I)	Monitor the Central Dike Seepage		Rockfill/Till/Bedrock	120.6/65.6	55	3 & 5	16	0.0	3.0	6.0	9.0	12.0	15.0	18.0	21.0	24.0	27.0	30.0	35.0	40.0	45.0	50.0	55.0
700-P1	7214590.6	638713.09	2017 (I)	Monitor the Central Dike Seepage		Rockfill/Till/Bedrock	119.65/62.98	56.67	3 & 5	16	1.2	4.2	7.2	10.2	13.2	16.2	19.2	22.2	25.2	28.2	31.2	36.2	41.2	46.2	51.2	56.2
800-P2	7214484.8	638711.24	2017 (I)	Monitor the Central Dike Seepage		Rockfill/Till/Bedrock	120/70	50	1,2 & 5	16	-0.5	1.5	2.5	3.5	4.5	7.5	10.5	13.5	16.5	19.5	24.5	29.5	34.5	39.5	44.5	49.5
800-P3	7208048.9	636462.4	2017 (I)	Monitor the Central Dike Seepage + TSF Thermal Behavior		Rockfill/Till/Bedrock	124.95/62.95	62	3 & 5	16	64.0	59.0	54.0	49.0	44.0	39.0	34.0	29.0	25.0	21.0	17.0	14.0	11.0	8.0	5.0	2.0
875-P2	7214417.2	638748.17	2017 (I)	Monitor the Central Dike Seepage		Rockfill/Till/Bedrock	120.16/63.08	57.02	3 & 5	16	0.1	3.1	6.1	9.1	12.1	15.1	18.1	21.1	24.1	28.1	32.1	37.1	42.1	47.1	52.1	57.1

Name	Northing	Easting	Year Installed (I) or Planned (P)	Purpose	Notes	Special Environmental Conditions	Top - Bot Elevation	Depth/Length	Lead Length	Nodes	NODE DEPTHS (m)															
											0.0	3.0	6.0	10.0	14.0	18.0	22.0	27.0	32.0	37.0	42.0	47.0	52.0	57.0	62.0	67.0
975-P3	7214315.5	638805.92	2017 (I)	Monitor the Central Dike Seepage + TSF Thermal Behavior		Rockfill/Bedrock	131.53/6449	67.04	3,4 & 5	16	0.0	3.0	6.0	10.0	14.0	18.0	22.0	27.0	32.0	37.0	42.0	47.0	52.0	57.0	62.0	67.0
1050-P3	7214234.6	638797.74	2017 (I)	Monitor the Central Dike Seepage + TSF Thermal Behavior		Rockfill/Bedrock	135.37/66.32	69.05	4 & 5	16	0.1	4.1	8.1	12.1	16.1	20.1	24.1	29.1	34.1	39.1	44.1	49.1	54.1	59.1	64.1	69.1

IPD-17-01	7214260.2	639229.87	2017 (I)	Portage Pit Thermal Behavior		Rockfill/Bedrock	129.935/-60.065	190	10 & 20	13	10.0	20.0	30.0	40.0	50.0	60.0	70.0	90.0	110.0	130.0	150.0	170.0	190.0
IPD-17-02	7208676.9	640117.24	2017 (I)	Portage Pit Thermal Behavior		Rockfill/Bedrock	130.66/-53.63	184.3	9.66/19.31	13	10.4	20.1	29.8	39.4	49.1	58.7	68.4	87.7	107.0	126.3	145.7	165.0	184.3
IPD-17-06	7212147.3	638503.35	2017 (I)	Goose Pit Thermal Behavior		Rockfill/Bedrock	130.855/-52.762	183.617	9.65 / 19.31	13	9.8	19.4	29.1	38.7	48.4	58.1	67.7	87.0	106.3	125.7	145.0	164.3	183.6
IPD-17-07	7208652.3	640691.38	2017 (I)	Goose Pit Thermal Behavior		Rockfill/Bedrock	134/-56	190	10 & 20	13	10.0	20.0	30.0	40.0	50.0	60.0	70.0	90.0	110.0	130.0	150.0	170.0	190.0
IPD-17-08	7214287.37	638978.21	2017 (I)	Central dump thermal & water level behaviors		Rockfill	113.83/65.43	48.4	N/A		(currently Being Developed)												



## UPDATED MINE WASTE ROCK AND TAILINGS MANAGEMENT PLAN

### 9 MONITORING AND CLOSURE

---

Mine closure and reclamation will utilize currently accepted management practices and appropriate mine closure techniques that comply with accepted protocols and standards. Closure will be based on project design and operation to minimize the area of surface disturbance, stabilize disturbed land surfaces and permafrost against erosion, and return the land to post-mining uses for traditional pursuits (MMC, 2007a). An updated Interim Closure and Reclamation Plan was prepared by Golder in January, 2014. The document was included as part of AEM's 2013 Annual Report.

The post-closure general concept for the Meadowbank site is illustrated in Figure 9-1. Mine waste rock storages for Portage and Vault and the North Cell TSF will be progressively closed during mine operations. For the Portage waste rock storage, the current plan considers a 4m cover of NAG rock placed over PAG waste rock piles. The majority of the Portage RSF is currently covered with NAG material during operations. For Vault, the waste rock storage is not expected to be covered, as the waste rock is mainly NAG, and the minimal PAG waste rock is encapsulated in the center of the pile during operation.

As explained in section 7.3 of the report, the design of the tailings cover for the TSF has been initiated in 2015 and 2016. A research project for the TSF cover is in progress at Meadowbank since 2014, in collaboration with the Research Institute Mines and Environment (RIME). Additional trials tests and studies on the TSF NAG capping are in progress and in-situ trials are in place since 2014 in the North Cell TSF to determine the effectiveness of different cover thicknesses and designs. As presented in section 7.3, the NAG cover design will consist of a landform that promotes water shedding from all surfaces covered by an engineered cover system. The design for the engineered cover system consists in a layer of compacted NAG waste rock (soapstone) with a minimum thickness of 2.0 m. Progressive construction of the NAG cover over the TSF has been completed from 2015 to 2017, and more is planned to be completed in 2018. Additional monitoring instruments were installed at the end of 2015, and additional instrument are also planned to be installed in the next years. Instruments will also be installed in the Vault waste rock storage. The surfaces of the Portage and Vault RSFs will be contoured where required to direct drainage respectively to the TSF (see Figure 9-2) and towards Vault Pit (see Figure 9-3). Note that Section A in Figure 9-2 is conceptual and does not represent the design work of the TSF North Cell completed. The runoff water from the Vault and Portage RSFs will be monitored at closure.



## UPDATED MINE WASTE ROCK AND TAILINGS MANAGEMENT PLAN

For the rock storage facility in Portage, geotechnical instruments are in place to assess the RSF freezeback and the performance of the NAG cover. Additional monitoring instruments were installed at the end of 2015. No instruments are planned to be installed in the Vault waste rock storage. The surfaces of the Portage and Vault RSFs will be contoured where required to direct drainage respectively to the TSF (see Figure 9-2) and towards Vault Pit (see Figure 9-3). Note that Section A in Figure 9-2 is conceptual and does not represent the design work of the TSF North Cell completed. The runoff water from the Vault and Portage RSFs will be monitored at closure.

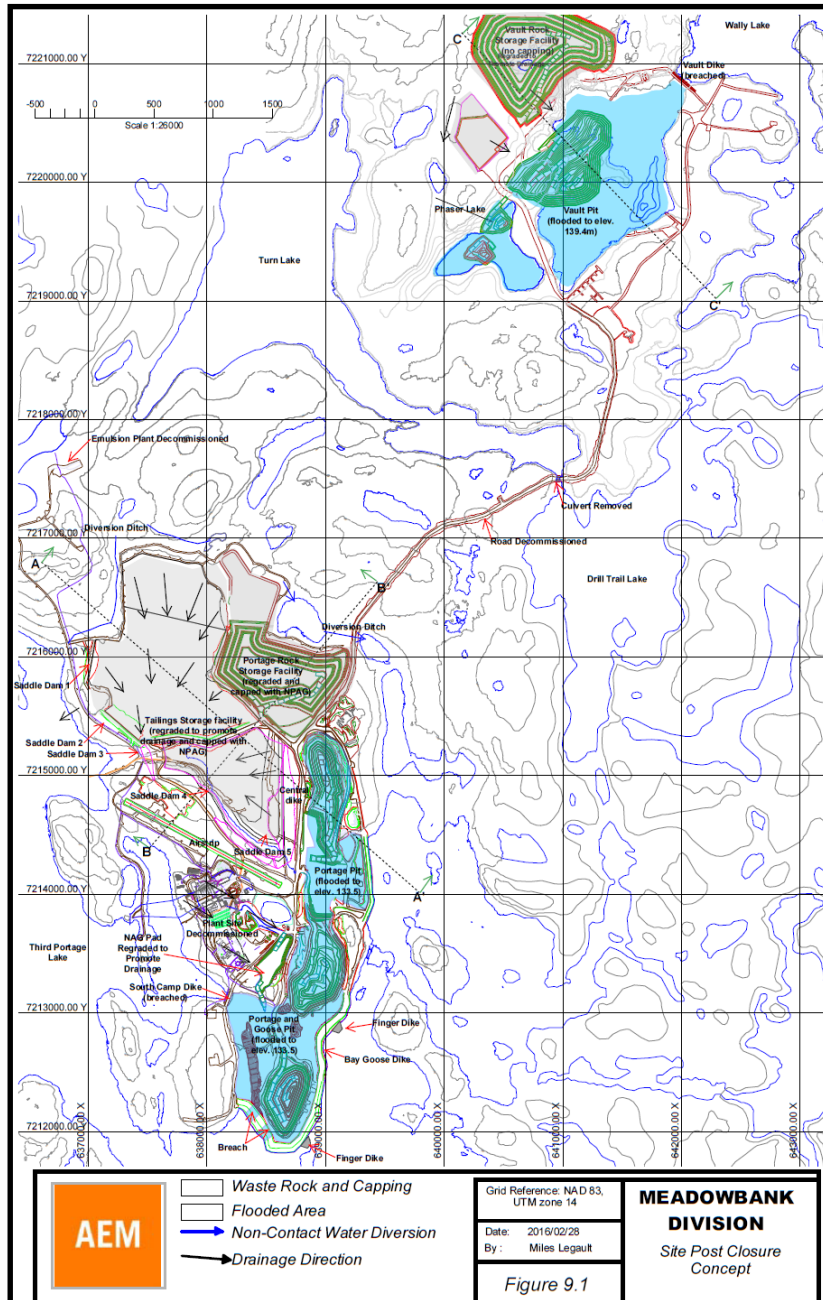
The Reclaim Pond will remain in place in the South Tailings Cell until mining and milling has been completed. Once milling has been completed, the South Cell reclaim water will be drained from the TSF and treated, if necessary, prior to discharge to the Portage Pit or in situ in the Portage Pit. Details of reclaim water transfers for pit flooding are available in the Water Management Plan, in the appendix of the 2017 Annual Report.

All infrastructure associated with these waste management facilities will be re-contoured and/or surface treated according to site specific conditions to minimize windblown dust and erosion from surface runoff, avoid acid rock drainage and to enhance the re-establishment of natural vegetation and wildlife habitat. A Final Reclamation and Closure Plan will be issued in accordance with the Water License.



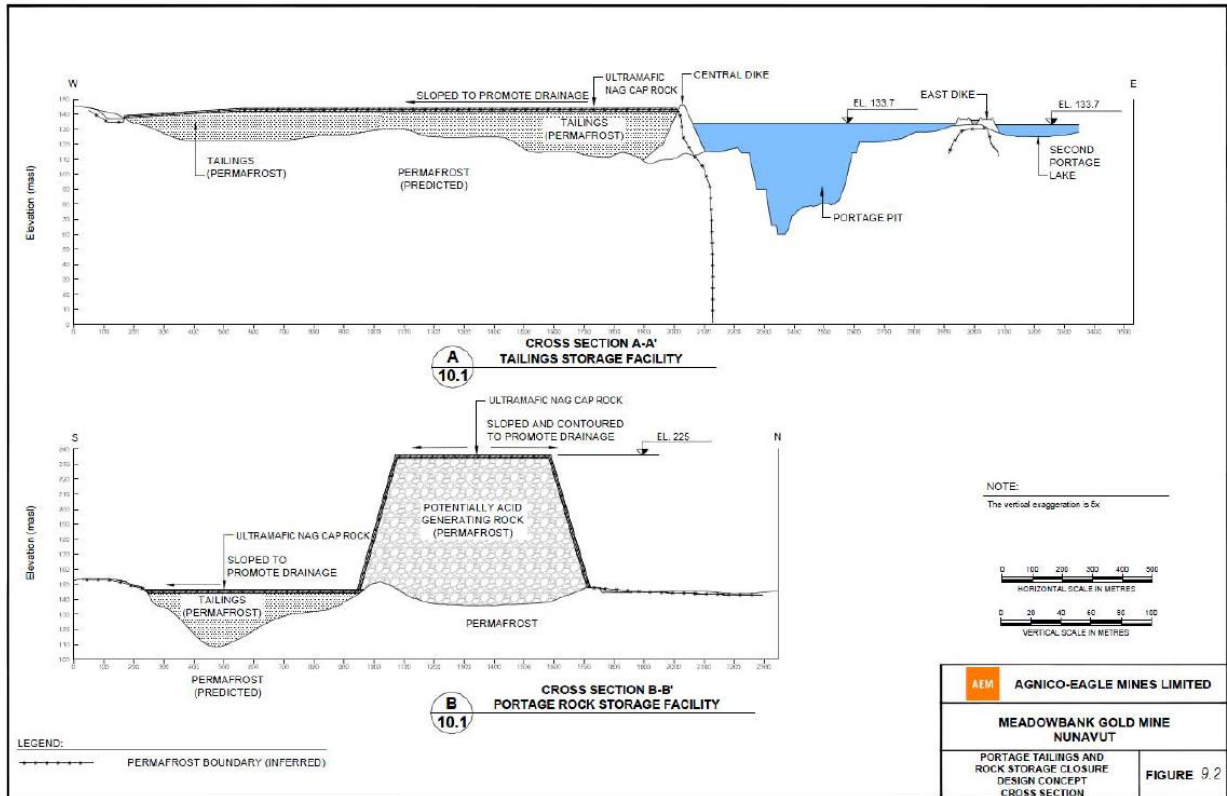
UPDATED MINE WASTE ROCK AND TAILINGS  
MANAGEMENT PLAN

Figure 9-1: Site Post Closure Concept

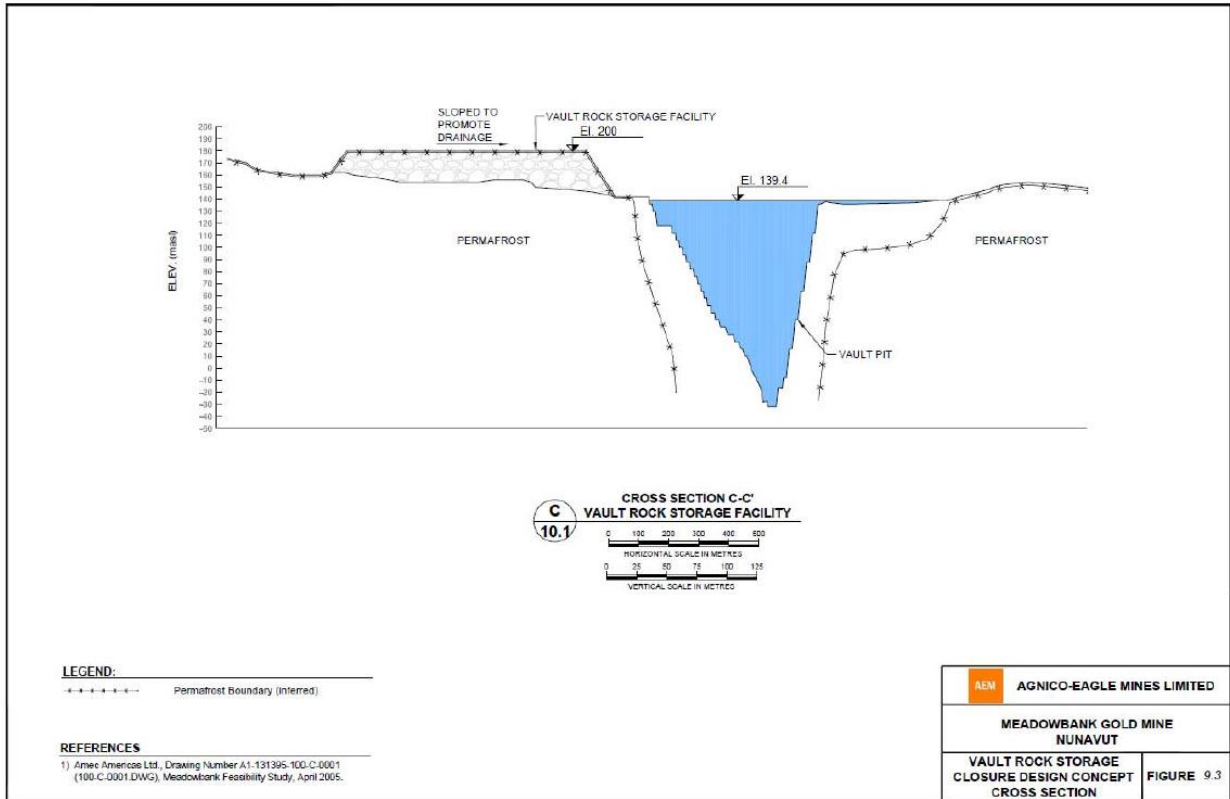


UPDATED MINE WASTE ROCK AND TAILINGS  
MANAGEMENT PLAN

Figure 9-2: Portage Tailings and Rock Storage Closure Design Concept Cross Section



**Figure 9-3: Vault Rock Storage Closure Design Concept Cross Section**





## UPDATED MINE WASTE ROCK AND TAILINGS MANAGEMENT PLAN

### 10 REFERENCES

---

- AEM, 2013. Meadowbank Gold Project, Mine Waste Management Plan. October 2013
- AMEC, 2003. Baseline Hydrology Study, AMEC Earth and Environmental, December 2003 with January 2004 errata sheets.
- AMEC, 2005a. Meadowbank Gold Project Hydrologic Monitoring 2004 Draft Data Report. February 2005.
- AMEC, 2005b. Meadowbank Gold Project Feasibility Study Report. June 2005.
- BGC Engineering Incorporated, (BGC) 2003. Implications of Global Warming and the Precautionary Principle in Northern Mine Design and Closure. 2003.
- BGC Engineering Incorporated, (BGC) 2004. Meadowbank Gold Project Preliminary Geothermal and Slope Stability Modelling of Rock Storage Facilities. March 31, 2004.
- Brown, J.O., Ferriars Jr., J, Heginbottom, J.A., and Melinkov, E.S., 1998. Circum-Arctic Map of Permafrost and Ground-Ice Conditions. Boulder, Colorado: National Snow and Ice Data Centre/World Data Center for Glaciology. Digital Media.
- Burn, C. R. 2003. Thermal modeling, Meadowbank Gold Project.
- Dawson and Morin, 1996. Mine Effluent Neutral Drainage (MEND), 1.61.2: Acid Mine Drainage in Permafrost Regions: Issues, Control Strategies and Research Requirements, 1996.
- Golder Associate Ltd (Golder) 2012. Tailings Deposition Plan – Update 2012, Meadowbank Project, Doc 1344, issued in April 2012
- Golder Associate Ltd (Golder) 2011a. Tailings Deposition Plan, Meadowbank Project, Doc 1272, to be issued in July 2011
- Golder Associate Ltd (Golder) 2011b. 2011 Central Dike Geotechnical Investigation, Tailings Storage Facility, Meadowbank Project, Doc 1268, May 17, 2011
- Golder Associate Ltd (Golder) 2011c. Tailings Deposition Plan Update, Tailings Storage Facility, Meadowbank Project, Doc. 1253, March 2011
- Golder Associate Ltd (Golder) 2011d. Preliminary Results - Tailings Deposition Plan - Spigot Scenario, Tailings Storage Facility, Meadowbank Project, Doc 1261, March 31, 2011
- Golder Associates Ltd. (Golder), 2008a. Coupled Thermal/Seepage and Contaminant Transport Modeling For The Tailings Facility, Meadowbank Gold Project. August 1, 2008.



## UPDATED MINE WASTE ROCK AND TAILINGS MANAGEMENT PLAN

- Golder Associates Ltd. (Golder), 2008b. Report on Tailings Storage Facility Dike Design, Meadowbank Gold Project. December 17, 2008.
- Golder Associates Ltd. (Golder), 2008c. Letter: Bay-Goose Dike and South Camp Dike Designs, Meadowbank Gold Project. December 2008.
- Golder Associates Ltd. (Golder), 2008d. Report on East Dike Design, Meadowbank Gold Project. October 2008.
- Golder Associates Ltd. (Golder), 2007a. Detailed Design of Central Dike, Meadowbank Gold Project. March 16, 2007.
- Golder Associates Ltd. (Golder), 2007b. Mitigative Measures for Potential Seepage from Tailings Facility. August, 2007.
- Golder Associates Ltd. (Golder), 2007c. Water Quality Predictions, Meadowbank Gold Project, Nunavut. August, 2007.
- Golder Associates Ltd. (Golder), 2006. Report on Winter 2006 Second Portage Central Dike Geotechnical Drilling, Hydrogeological, and Televiewer Investigation, Meadowbank Gold Project, Nunavut. July, 2006.
- Golder Associates Ltd. (Golder), 2003. Report on Permafrost Thermal Regime Baseline Studies, Meadowbank Project. December 18, 2003.
- Hayley, D. W. 2004. Climate Change – An Adaptation Challenge for Northern Engineers. The PEGG. January 2004, p.21.
- Hayley, D.W. and Cathro D.C. 1996. Working with Permafrost when Planning an Arctic Mine. CIM Edmonton 96, April 28 - May 2, 1996, Edmonton, Alberta.
- IPCC (Intergovernmental Panel on Climate Change), 2007. Climate Change 2007: The Physical Science Basis.
- Meadowbank Mining Corporation (MMC), 2007a. Meadowbank Gold Project Preliminary Closure and Reclamation Plan. August, 2007.
- MEND 1.61.2, 1996. Acid Mine Drainage in Permafrost Regions: Issues, Control Strategies and Research Requirements. July.
- NRC (Natural Resources Canada), 2004. National Annual Temperature Scenario: 2050. The Atlas of Canada. Natural Resources Canada. On-line map. Accessed July 2007. Available: <http://atlas.gc.ca/site/english/maps/climatechange/scenarios/nationalannualtemp2050/>
- Woo, M.-K., A. G. Lewkowicz, and W. R. Rouse, 1992. Response of the Canadian Permafrost Environment to Climatic Change. 1992.
- 2016 Waste Management Plan documents: P:\Engineering\04-MineEng\06-PLANNING\01-LOM\LOM 2017\Waste Management 2017
- 2016 Budget MineSched file: P:\Engineering\04-MineEng\06-PLANNING\09-MINESCHED\BUD2016\_V3G.minesched



**UPDATED MINE WASTE ROCK AND TAILINGS  
MANAGEMENT PLAN**

Supporting Budget files location: P:\Engineering\04-MineEng\06-PLANNING\02-BUDGET\2016 Budget\Official Version

2017 data Processed Tailing Volume: P:\Engineering\04-MineEng\06-PLANNING\01-LOM\LOM 2018\05 - WASTE  
MANAGEMENT\01 TABLES

January 2018 Deposition Plan & Water Balance: P:\Engineering\05-Geotechnic\06-TailingsManagement\4 -  
DEPOSITION PLAN\2018\2- Deposition Plan Jan2018\docs

List of all Thermistors and Piezometers coordinates January 2018: P:\Engineering\05-Geotechnic\11-  
Instrumentation\Instruments\Instruments List ( ID & Locations )

January 2018 Instrumentation map: P:\Engineering\05-Geotechnic\11-Instrumentation\Instruments\MAP & DWG



MEADOWBANK GOLD PROJECT  
UPDATED MINE WASTE ROCK AND TAILINGS  
MANAGEMENT PLAN

**APPENDIX 1**

**TSF Integrated Deposition Plan**

---