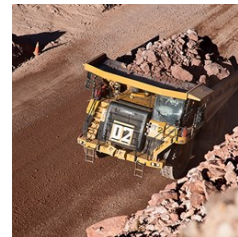
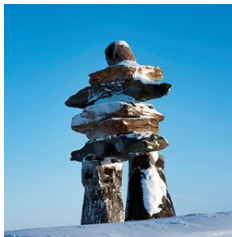


Appendix G9

Presentation and minutes meeting for Phaser Lake Fishout Results

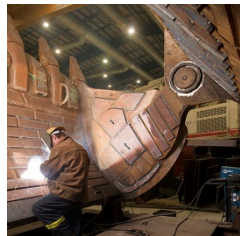


AGNICO EAGLE



PHASER LAKE FISHOUT FOLLOW UP HTO PRESENTATION

Environment Department
February 2017



PHASER LAKE FISHOUT

AGENDA

- Resume of the fishout program
- Fishout data
- Improvement of the fish transfer
- Fishout distribution
- Resume



PHASER LAKE FISHOUT

RESUME OF THE PROGRAM

➤ Fishout: phase 1

- August 14th to September 1st

➤ % captured of Leslie and DeLury population estimate were over 100%

➤ Fishout: phase 2

- September 11th to September 26th upon DFO approval

➤ The Catch Per Unit Effort (CPUE) was lower than 1 for two consecutive days

➤ Dewatering: stage 1

- August 26th to September 10th

➤ Dewatering: stage 2

- September 15th to October 4th

PHASER LAKE FISHOUT

FISHOUT DATA

- Total of **1357** fish were caught:
 - 432 in phase 1
 - 925 in phase 2
- **977** fish successfully transferred in Wally Lake for a **72%** rate
 - the best of all 4 fishout events at Meadowbank
- **1** Arctic char caught in phase 1 (maybe identification error)
- **479** Lake trout caught:
 - 123 in phase 1
 - 356 in phase 2
- **761** Round white fish caught:
 - 308 in phase 1
 - 453 in phase 2
- **116** Burbot caught all in phase 2



PHASER LAKE FISHOUT

FISH TRANSFER IMPROVEMENT

- The manipulation of the fish was restrained as much as possible and personal were always wearing gloves while manipulating the fish
- Fish release area was modified to allow more space and no overhead nets
- Fin clip replacing the tag on the round whitefish showed great improvement in the transfer success
- The water temperature also seems to be a factor as the transfer rate rose while the water temperature was getting low
- The team also put great effort in oxygenating the water in the fish transfer containment and minimize the time spent by the fish in the containment.





PHASER LAKE FISHOUT

FISH DISTRIBUTION

- During discussion with the HTO, representatives did not have a problem with the previous fishout and expressed an interest that the fish be packaged and distributed to the community as per 2008, 2010 and 2013 fishout programs
- Fish from the first phase were brought to the community freezer on September 6th
- Fish from the second phase were brought to the community freezer on September 30th



PHASER LAKE FISHOUT RESUME

- The 2016 Phaser Lake fishout recorded the highest fish transfer rate ever recorded at Meadowbank (72%)
- The collaboration and input from the HTO helped improve the success of the fishout program
- The experience of the contractor (North South consultant), also used in all the previous fishout programs was a positive asset.
- Agnico's implication (4 local helpers out of 6 workers) were involved in the process
- Fish distribution in collaboration with the Collaboration Committee (Karen Yip) went good also .





AGNICO EAGLE



THANK YOU



BLHTO Q1

February 10, 2017 Meadowbank

Attendees:

Name		Function	Organization
Karen Yip	KY	Community Liaison Coordinator	Agnico Eagle Mines
Robin Allard - Chair	RA	Sr. Environment Coordinator	Agnico Eagle Mines
Eric Steinmetzer	ES	Asst. Superintendent Mine	Agnico Eagle Mines
Richard Aksawnee	RAk	Chairperson	BLHTO
Alexander Alooq	AA	1 st Vicechair	BLHTO
Thomas Anirniq	TA	Director	BLHTO
Thomas Elytook	TE	Director	BLHTO
Greg Tapatai	GT	Director	BLHTO
Eric John Tapatai	EJT	Director	BLHTO
Harold Putumiraqtuq	HP	Director	BLHTO
Jeff Hart	JH	Water/Marine Environment Specialist	KIA
Kathy Tiktaalaalak	KT	Translator	

Agenda Item	Description	Action Items/Due Date
Opening	<ul style="list-style-type: none"> RA-Introductions, regrets for meeting on 3rd floor 	
Amaruq Road update	<ul style="list-style-type: none"> ES-Started Fall 2106, now constructing 4th (temporary) bridge, road is 32km long-almost half finished, expect road construction to be completed by August 2017. 	
<i>Questions/Comments</i>	<ul style="list-style-type: none"> TE-Snowmobile crossing (road to Gjoa Haven)-will there be sand or rock put down? ES-Snow will be sloped for access, and permanent ramp will be built with sloping material (not rocks) after snow melts RA-Official Crossing signs will be put up and have been ordered. Vault to Whale Tail Pit road embankment will be sloped to assist wildlife crossing as evenly as possible along the road RAk-Person who tried to cross the road was told they 'need permit' RA/ES-No permit needed, can cross road-no issue, except traffic AA-What about the historical sites the road was built on? RA-The road was not built on any graves, and a buffer zone (30m) is observed with other sites 	<p>Snow management/permanent ramp/Crossing signs- RA/ES –Q2 meeting</p> <p>Vault-WTP road permanent sloping embankment-RA/ES – Q4</p>



Phaser Lake Fishout	<ul style="list-style-type: none">• RA-Summary and results -over 70% success rate for transfer, improvements noted with inclusion of traditional knowledge from HTO. <p><i>No questions</i></p>	
Minutes were edited at this point. The remainder of the meeting was a discussion on dust and Amaruq updates Q/A with Agnico Eagle and HTO and did not pertain to fish-out discussion. Minutes were removed to lighten and simplify document.		
Closing		Next meeting-Q2 Baker Lake-KY