

APPENDIX 21 2023 BLAST MONITORING REPORT



AGNICO EAGLE

MELIADINE GOLD MINE

2023 Blast Monitoring Report

In Accordance with NIRB Project Certificate No. 006

Prepared by:
Agnico Eagle Mines Limited – Meliadine Division

MARCH 2024

TABLE OF CONTENTS

Table of Contents	i
List of Figures	i
List of Tables	i
Section 1 • Introduction and Objectives	3
Section 2 • Methods	5
2.1. Blast Monitoring	5
2.2. Data Compilation and Analysis	5

LIST OF FIGURES

Figure 1: Surface blast monitoring station locations used for TIRI01 blasts (distance in meters)	4
Figure 2: PPV values over time for TIRI-01 blast monitoring	6
Figure 3: Pressure values over time for Tiri-01 blast monitoring.....	7

LIST OF TABLES

Table 1: Tiriganiaq Open pits 1 & 2 (TIR01 & TIR02) Surface blast monitoring station coordinates	4
Table 2: 2023 PPV and ICP Blast Monitoring Results – TIRI-01	7

ACRONYMS

Agnico Eagle	Agnico Eagle Mines Limited
DFO	Department of Fisheries and Oceans Canada
IPC	Instantaneous pressure change
NIRB	Nunavut Impact Review Board
PPV	Peak particle velocity
PVS	Peak vector sum
TIRI01	Tiriganiaq Open pit 2
TIRI02	Tiriganiaq Open pit 2

UNITS

kg/t	Kilogram per ton
Kpa	Kilopascal
m	Meter
mm/s	Millimetre per second
t/m	Ton per meter

SECTION 1 • INTRODUCTION AND OBJECTIVES

In accordance with Term and Condition 11 of Project Certificate No.006 issued by the Nunavut Impact Review Board (NIRB), Agnico Eagle Mines Limited (Agnico Eagle) - Meliadine Division developed a Blast Monitoring Program which complies with *The Guidelines for the Use of Explosives In or Near Canadian Fisheries Water* (Wright and Hopky, 1998) as modified by the Department of Fisheries and Oceans Canada (DFO) for use in the North and adhere to guidance provided in *Monitoring Explosive-Based Winter Seismic Exploration in Waterbodies* (Cott and Hanna, 2005). As a result, Agnico Eagle conducts monitoring to evaluate blast related peak particle velocity (PPV) and overpressure to protect nearby fish bearing waters.

The detonation of explosives in or near water produces compressive shock waves that can cause significant impacts to the swim bladders of fish, rupture other internal organs and/or damage or kill fish eggs and larvae. In addition, the effects of the shock waves can be intensified in the presence of ice. Consequently, the *Guidelines for the Use of Explosives In or Near Canadian Fisheries Water* guidelines have been developed by DFO to protect fish and fish habitat from works or undertakings that involve explosives in or near fisheries waters. Guidance provided in *Monitoring Explosive-Based Winter Seismic Exploration in Waterbodies* (Cott and Hanna, 2005) was also followed. It includes the following requirements:

1. No explosive is to be detonated in or near fish habitat that produces an instantaneous pressure change (IPC) greater than 100 kPa in the swim bladder of a fish; representatives from DFO requested that Agnico Eagle use a value of 50 kPa instead of 100 kPa; and
2. No explosive is to be detonated that produces a peak particle velocity greater than 13 mm/s in a spawning bed during the period of egg incubation (for lakes near the Meliadine mine, it takes place between August 15 and June 30).

PPV and overpressure monitoring data were recorded throughout 2023 during blasting activities at Meliadine. During 2023, one surface location was monitored: Tiriganiaq Open pit 1 (TIR01). No blasting activities occurred at Tiriganiaq Open Pit 2 (TIR02) in 2023. The locations of the blast monitoring stations used in 2023 are shown in Table 1 and figure 1 below.

To improve vibration monitoring practices and data accuracy, permanent monitoring installations were commissioned on August 20th, 2020, allowing the seismograph to be directly anchored into the bedrock via attachment to a steel rod drilled through the tundra. These permanent stations thereafter replaced the temporary locations used previously.

Table 1: Tiriganiaq Open pits 1 & 2 (TIR01 & TIR02) Surface blast monitoring station coordinates

LOCATION	EASTING	NORTHING	DESCRIPTION
Explo Camp	541927.162	6989073.053	Permanent location used for TIR01 & TIR02 (installed 2020-08-20)
Comm Tower P1	539803.785	6988836.212	Permanent location used for TIR01 & TIR02 (installed 2020-08-20)

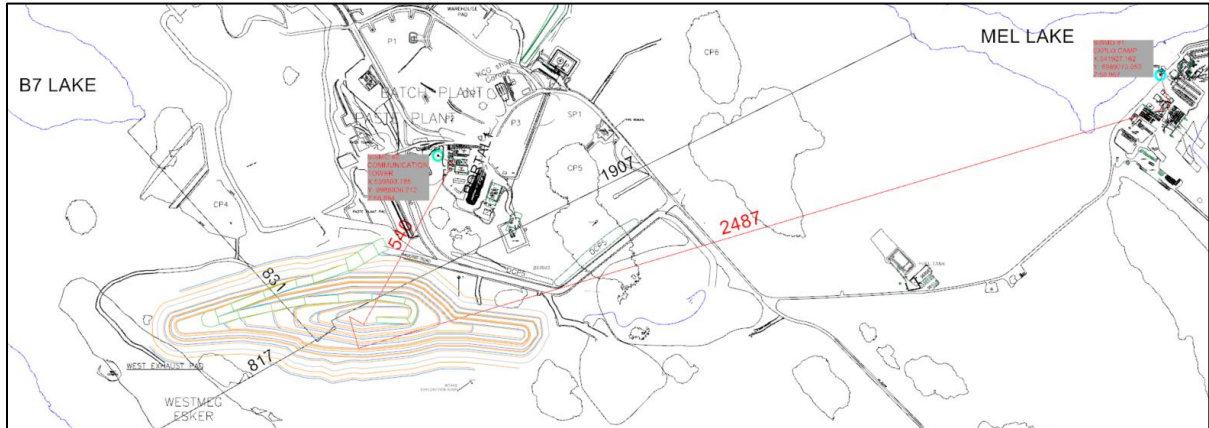


Figure 1: Surface blast monitoring station locations used for TIR01 blasts (distance in meters)

SECTION 2 • METHODS

2.1. Blast Monitoring

Blasts were monitored using an InstanTel Minimate Blaster which is fully compliant with the international Society of Explosives and Engineers performance specifications for blasting seismographs (InstanTel, 2005). The transducer is installed as per the model specifications. For additional details on seismograph instrumentation and monitoring program detail, please refer to the Blast Monitoring Program; all monitoring protocols set forth in this program are followed by Agnico Eagle.

This instrument measures transverse, vertical and longitudinal ground vibrations. Transverse ground vibrations agitate particles in a side-to-side motion. Vertical ground vibrations agitate particles in an up and down motion. Longitudinal ground vibrations agitate particles in a back-and-forth motion progressing outward from the event site (InstanTel, 2005). The Minimate Blaster calculates the PPV for each geophone and calculates the vector sum of the three axes. The result is the Peak Vector Sum (PVS) and is the resultant particle velocity magnitude of the event:

$$PVS = \sqrt{T^2 + V^2 + L^2}$$

Where:

T = particle velocity along the transverse plane

V = particle velocity along the vertical plane

L = particle velocity along the longitudinal plane

2.2. Data Compilation and Analysis

The blast monitoring data is screened to ensure blast PPV and IPC monitoring results corresponded to a single blast event. As per the Blast Monitoring Plan, Mining Engineers & Technicians have thoroughly documented all blasting activities from design concept to results – which include PPV and IPC measurements. If required, blasting procedure will be reviewed to ensure that the site remains within threshold limits and in continued compliance with regulations, as is part of the blast optimization process.

The following is a summary of the data collected for the 2023 Tiriganiaq Open Pit 1 operations with respect to Meliadine Lake, Lake B5 and Lake B7. These lakes were identified as the closest accessible fish bearing lakes to the blasting activities that would occur throughout 2023. Guidance may change as the footprint of the site evolves over time.

It should be noted Figures 2, 3 and Table 2 below only present data from the *Comm Tower P1* monitoring station, since the *Explo Camp* monitoring station did not record any value above zero (the seismograph was not triggered by the blasting events).

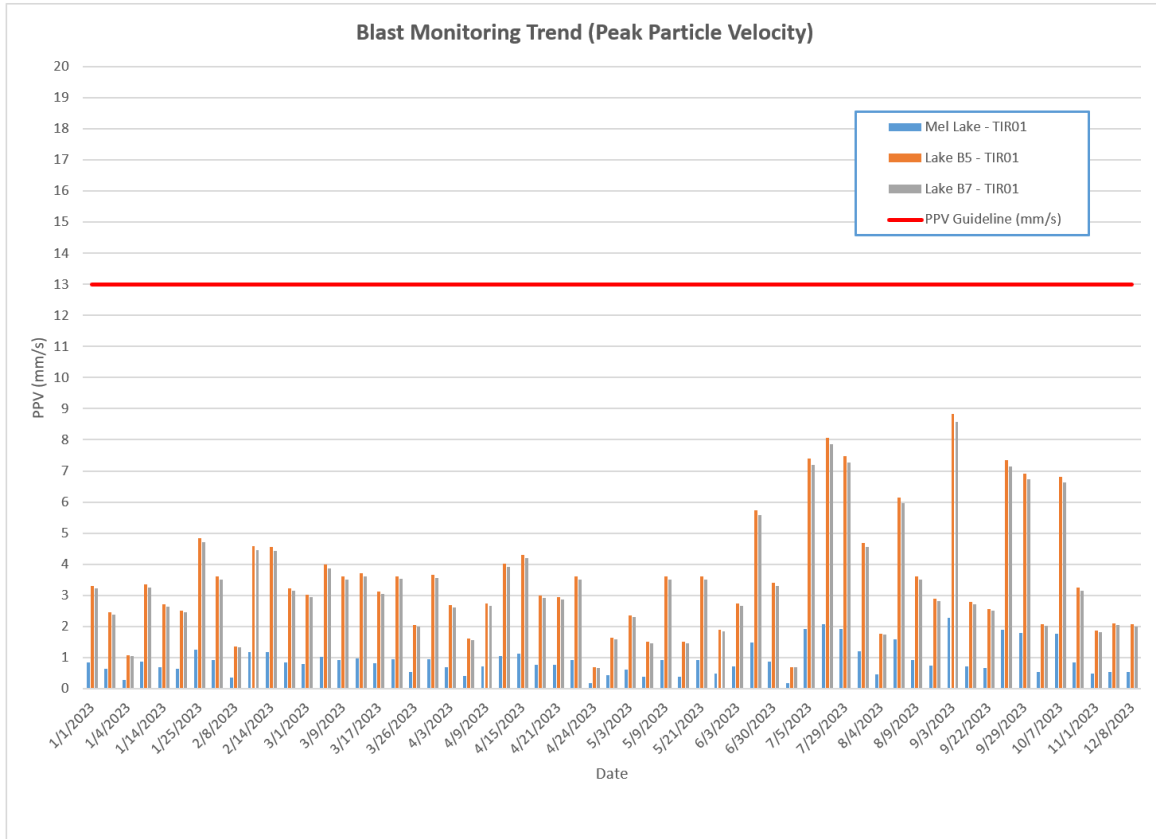


Figure 2: PPV values over time for TIRI-01 blast monitoring

As seen in the previous chart, there is no PPV value close to the PPV threshold guideline of 13 mm/s. The average PPV value for 2023 was 2.61 mm/s, with a minimum of 0.28 mm/s (at Meliadine Lake) and a maximum of 8.83 mm/s (at Lake B5). The maximum value was logged during the waste blast of TIR01C-10050MS15 and can be explained by the size of the blast (close to 140,000 tons compared to an average blast size of 50,000 tons), the non-optimal geometry and a 10m bench height. The odd shape of this pattern led to a lower Drill factor (t/m) than usual, which resulted in a final powder factor of 0.42 kg/t.

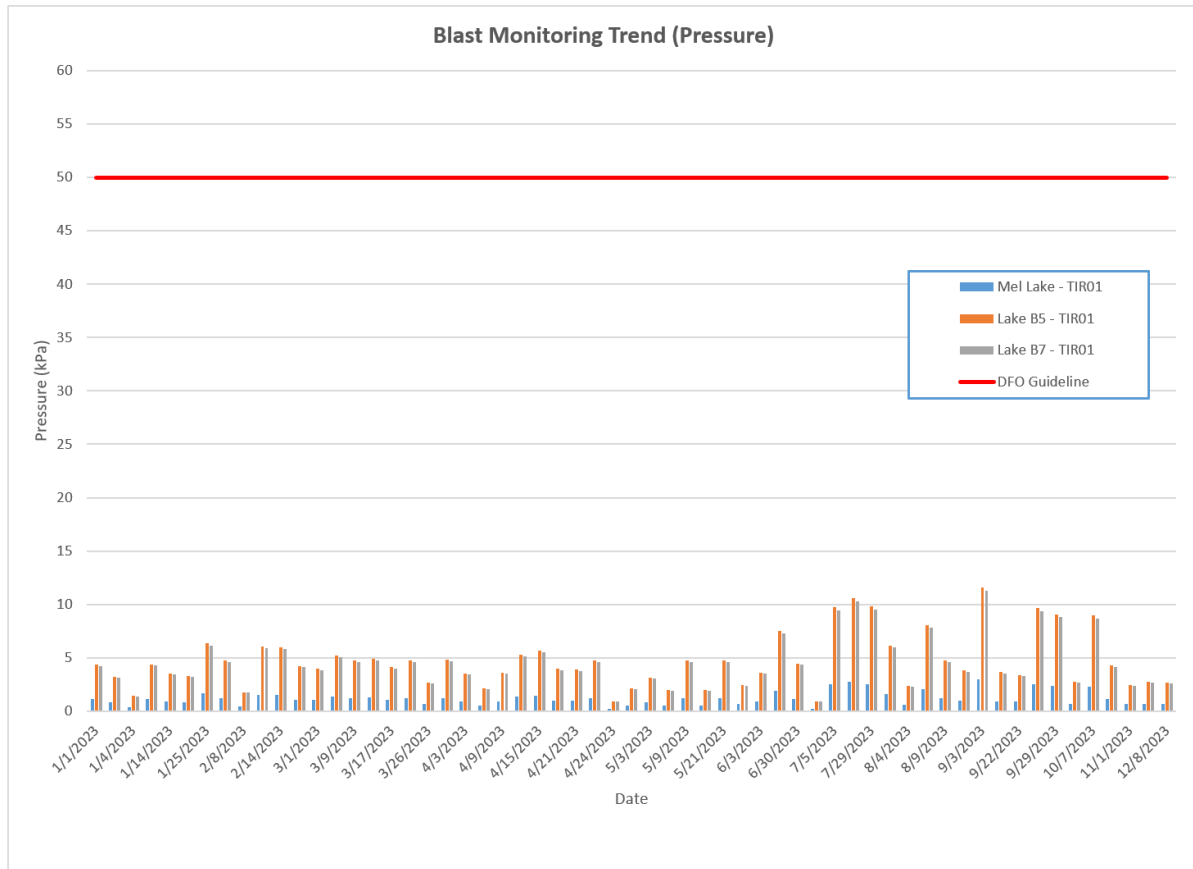


Figure 3: Pressure values over time for Tiri-01 blast monitoring

As seen in the previous chart, recorded values for Pressure are significantly below DFO guideline of 50 kPa. The average kPa value for 2023 was 3.52 kPa, with a minimum of 0.23 kPa (at Meliadine Lake) and a maximum of 11.59 kPa (at Lake B5). The maximum value was also recorded during the waste blast of TIR01C-10050MS15 (same explanation as for the PPV above).

Table 2: 2023 PPV and ICP Blast Monitoring Results – TIRI-01

DFO Limits: Peak Particle Velocity - PPV = 13, Peak Sound Pressure - kPa = 50

Date	Seismo Serial #	Location	PPV (mm/s)			Pressure Pw (kPa)		
			Mel Lake	Lake B5	Lake B7	Mel Lake	Lake B5	Lake B7
1/1/2023	MP14206	Comm tower P1	0.85	3.30	3.21	1.12	4.33	4.22
1/4/2023	MP14206	Comm tower P1	0.63	2.45	2.38	0.83	3.21	3.13
1/4/2023	MP14206	Comm tower P1	0.28	1.08	1.05	0.36	1.42	1.38
1/8/2023	MP14206	Comm tower P1	0.86	3.34	3.25	1.13	4.38	4.27
1/14/2023	MP14206	Comm tower P1	0.70	2.70	2.63	0.91	3.55	3.45
1/18/2023	MP14206	Comm tower P1	0.65	2.51	2.44	0.85	3.29	3.20
1/25/2023	MP14206	Comm tower P1	1.24	4.82	4.70	1.63	6.33	6.16

Date	Seismo Serial #	Location	PPV (mm/s)			Pressure Pw (kPa)		
			Mel Lake	Lake B5	Lake B7	Mel Lake	Lake B5	Lake B7
1/27/2023	MP14206	Comm tower P1	0.93	3.60	3.51	1.22	4.73	4.60
2/8/2023	MP14206	Comm tower P1	0.35	1.36	1.32	0.46	1.78	1.73
2/10/2023	MP14206	Comm tower P1	1.18	4.59	4.46	1.55	6.02	5.86
2/14/2023	MP14206	Comm tower P1	1.17	4.55	4.42	1.54	5.97	5.81
2/25/2023	MP14206	Comm tower P1	0.83	3.22	3.14	1.09	4.23	4.12
3/1/2023	MP14206	Comm tower P1	0.78	3.01	2.93	1.02	3.96	3.85
3/5/2023	MP14206	Comm tower P1	1.02	3.98	3.87	1.35	5.22	5.08
3/9/2023	MP14206	Comm tower P1	0.93	3.60	3.51	1.22	4.73	4.60
3/12/2023	MP14206	Comm tower P1	0.96	3.71	3.61	1.25	4.87	4.74
3/17/2023	MP14206	Comm tower P1	0.80	3.12	3.04	1.06	4.10	3.99
3/23/2023	MP14206	Comm tower P1	0.93	3.61	3.52	1.22	4.74	4.62
3/26/2023	MP14206	Comm tower P1	0.53	2.04	1.99	0.69	2.68	2.61
3/30/2023	MP14206	Comm tower P1	0.94	3.65	3.56	1.24	4.80	4.67
4/3/2023	MP14206	Comm tower P1	0.69	2.67	2.60	0.90	3.51	3.41
4/5/2023	MP14206	Comm tower P1	0.41	1.60	1.56	0.54	2.11	2.05
4/9/2023	MP14206	Comm tower P1	0.70	2.73	2.66	0.92	3.59	3.49
4/13/2023	MP14206	Comm tower P1	1.04	4.03	3.92	1.36	5.29	5.15
4/15/2023	MP14206	Comm tower P1	1.11	4.30	4.19	1.46	5.65	5.50
4/21/2023	MP14206	Comm tower P1	0.77	3.00	2.92	1.02	3.94	3.83
4/21/2023	MP14206	Comm tower P1	0.76	2.95	2.87	1.00	3.87	3.76
4/21/2023	MP14206	Comm tower P1	0.93	3.60	3.51	1.22	4.73	4.60
4/24/2023	MP14206	Comm tower P1	0.17	0.68	0.66	0.23	0.89	0.87
4/29/2023	MP14206	Comm tower P1	0.42	1.62	1.58	0.55	2.13	2.07
5/3/2023	MP14206	Comm tower P1	0.61	2.36	2.30	0.80	3.10	3.02
5/5/2023	MP14206	Comm tower P1	0.39	1.50	1.46	0.51	1.97	1.92
5/9/2023	MP14206	Comm tower P1	0.93	3.60	3.51	1.22	4.73	4.60
5/16/2023	MP14206	Comm tower P1	0.39	1.51	1.46	0.51	1.98	1.92
5/21/2023	MP14206	Comm tower P1	0.93	3.60	3.51	1.22	4.73	4.60
5/30/2023	MP14206	Comm tower P1	0.48	1.88	1.83	0.63	2.46	2.40
6/3/2023	MP14206	Comm tower P1	0.70	2.73	2.66	0.92	3.59	3.49
6/10/2023	MP14206	Comm tower P1	1.47	5.73	5.57	1.94	7.52	7.32
6/30/2023	MP14206	Comm tower P1	0.88	3.40	3.31	1.15	4.46	4.34
7/4/2023	MP14206	Comm tower P1	0.18	0.69	0.68	0.23	0.91	0.89
7/5/2023	MP14206	Comm tower P1	1.91	7.40	7.20	2.50	9.72	9.45
7/20/2023	MP14206	Comm tower P1	2.08	8.07	7.85	2.73	10.59	10.31
7/29/2023	MP14206	Comm tower P1	1.92	7.47	7.27	2.53	9.80	9.54
8/2/2023	MP14206	Comm tower P1	1.20	4.67	4.55	1.58	6.13	5.97
8/4/2023	MP14206	Comm tower P1	0.46	1.77	1.72	0.60	2.33	2.26
8/8/2023	MP14206	Comm tower P1	1.58	6.13	5.97	2.07	8.05	7.83

Date	Seismo Serial #	Location	PPV (mm/s)			Pressure Pw (kPa)		
			Mel Lake	Lake B5	Lake B7	Mel Lake	Lake B5	Lake B7
8/9/2023	MP14206	Comm tower P1	0.93	3.60	3.51	1.22	4.73	4.60
8/18/2023	MP14206	Comm tower P1	0.74	2.89	2.81	0.98	3.79	3.69
9/3/2023	MP14206	Comm tower P1	2.27	8.82	8.59	2.99	11.59	11.28
9/11/2023	MP14206	Comm tower P1	0.72	2.78	2.70	0.94	3.64	3.55
9/22/2023	MP14206	Comm tower P1	0.66	2.56	2.50	0.87	3.37	3.28
9/26/2023	MP14206	Comm tower P1	1.89	7.34	7.14	2.48	9.63	9.37
9/29/2023	MP14206	Comm tower P1	1.78	6.91	6.72	2.34	9.07	8.83
10/3/2023	MP14206	Comm tower P1	0.53	2.07	2.01	0.70	2.72	2.64
10/7/2023	MP14206	Comm tower P1	1.75	6.81	6.63	2.30	8.94	8.70
10/14/2023	MP14206	Comm tower P1	0.83	3.24	3.15	1.10	4.25	4.14
11/1/2023	MP14207	Comm tower P1	0.48	1.87	1.82	0.63	2.46	2.40
11/18/2023	MP14207	Comm tower P1	0.54	2.09	2.03	0.71	2.74	2.67
12/8/2023	MP14207	Comm tower P1	0.53	2.06	2.00	0.70	2.70	2.63

Note: Toward the end of the year, 4 blasts were not monitored due to electrical issues (damaged wires and an electrical shutdown). They took place on Oct. 23, Dec. 12, Dec. 16 and Dec. 20 (not listed above). The data from similar blasts in the same areas have shown values below 7 mm/s and 9 kPa, which is compliant with respect to established thresholds. Monitoring equipment status was back to normal soon after, to ensure proper tracking in the new year.