

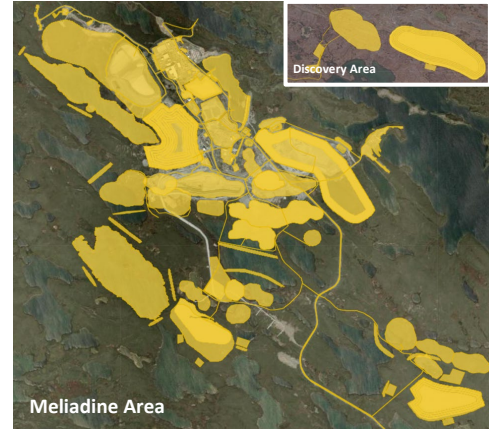


# AGNICO EAGLE

## What is the Meliadine Continuation of Mining?

The Meliadine Continuation of Mining explains **how Agnico Eagle plans to continue operating the existing Meliadine Mine** using the **same approved mine area and infrastructure**, for an additional five years to 2036.

This update does **not** propose a new mine or new mining areas. Instead, it focuses on **continuing current operations safely and responsibly**, with some elements that require an update to the existing Water Licence.



Yellow = approved mine footprint and areas of continuation of mining

## Why is this being done now?

The mine plan has been refined to reflect **continued mining** and the use of **existing infrastructure for a longer period of time**. Agnico Eagle must update its **Water Licence** to reflect the continuation of mining.

## Why the Nunavut Water Board (NWB) process is appropriate?

Agnico Eagle believes this update should be reviewed through the **NWB** because:

- The activities are **already approved** and are happening **within the existing mine footprint**;
- There are **no new types of activities** being introduced;
- Environmental effects have already been assessed and will continue to be monitored;
- Existing Terms and Conditions are in place for the scope and activities.

In simple terms, this is about **updating an existing water licence**, not starting a new project. Because of this, a new review by the Nunavut Impact Review Board (NIRB), should **not be required**.

## Components of the Meliadine – Continuation of Mining

### Continuation of Mine Life

Continued open pit and underground mining at approved deposits

### Increase Freshwater Use

A small increase in freshwater use for the camp

### Increase On-Site Fuel Storage

Additional fuel storage at deposits to support continued mining

### Contact Water Storage in Pit

Use of existing pits to store mine water during operations

## Working with communities

Agnico Eagle is committed to:

- Sharing information early and clearly
- Working with KivIA and communities
- Continuing monitoring and reporting
- Listening to feedback and addressing concerns.

**For inquiries, contact Tusaajugut - Nunavut Communication System:**

+1 844 323 3002

[tusaajugut@agnicoeagle.com](mailto:tusaajugut@agnicoeagle.com)

[aemnunavut.ca/tusaajugut](http://aemnunavut.ca/tusaajugut)

